

Converting Colors

$Y_{xy}(46.9036, 0.3297, 0.3347)$

Have a look what the booklet for
Yxy(46.9036, 0.3297, 0.3347)
contains.

Yxy(46.8047, 0.3292, 0.3341)	3
Conversions	4
Details	6
Harmonies	12
Previews	24
Color Blindness Simulation	27
CSS Examples	30

Color

Yxy(46.8047, 0.3292, 0.3341)

Conversions

Conversions Part 1

Format	Color
Hex	C2B3AF
RGB	194, 179, 175
RGB Percent	76%, 70%, 69%
CMY	0.2390, 0.2981, 0.3137
CMYK	0.00, 0.08, 0.10, 0.24
HSL	13°, 14%, 72%
HSV	13°, 10%, 76%
XYZ	46.1182, 46.8047, 47.1689
YIQ	183.0290, 10.2240, 1.9360

Conversions

Conversions Part 2

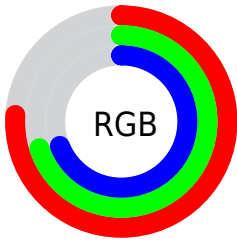
Format	Color
RYB	194, 180, 175
Decimal	12759983
CIELab	74.06, 4.69, 3.95
CIELCh	74, 6.133, 40.125
Yxy	46.8047, 0.3292, 0.3341
Android (android.graphics.Color)	4290950063 (0xFFC2B3AF)
YUV	183.0290, -3.9583, 9.6216
Hunter-Lab	68.4140, 0.6035, 7.0115

Details

The Yxy color **46.8047, 0.3292, 0.3341** is a light color, and the websafe version is hex **CCCCCC**. A complement of this color would be **49.8798, 0.2977, 0.3238**, and the grayscale version is **47.3936, 0.3127, 0.3290**.

A 20% lighter version of the original color is **85.6391, 0.3267, 0.3340**, and **21.9272, 0.3331, 0.3343** is the 20% darker color. If you saturate the color by 10%, you get **40.2800, 0.3494, 0.3397**, and if you desaturate by 10%, it is **54.1292, 0.3124, 0.3289**.

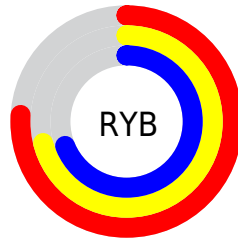
Distribution



Red (76%)

Green (70%)

Blue (69%)



Red (76%)

Yellow (71%)

Blue (69%)

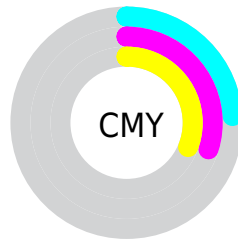


Cyan (0%)

Magenta (8%)

Yellow (10%)

Black (24%)



Cyan (24%)

Magenta (30%)

Yellow (31%)

Brightness & Saturation Gradients

These gradients show how the Yxy color 46.8047, 0.3292, 0.3341 changes by changing the brightness by 10 percent. The first figure shows a shift by +10% for each color and the second figure -10%.

Similar to the brightness gradients but the following saturation gradients show a change of the Yxy color 46.8047, 0.3292, 0.3341 by changing the saturation by 10% instead.

■ 46.8047, 0.3292,
0.3341

■ 46.8047, 0.3292,
0.3341

374.0344, 0.3209,
0.3316

■ 32.8813, 0.3313,
0.3347

■ 85.4220, 0.3262,
0.3332

■ 22.0355, 0.3339,
0.3355

110.8847, 0.3251,
0.3329

■ 13.8830, 0.3375,
0.3365

140.9627, 0.3241,
0.3326

■ 8.0393, 0.3425,
0.3379

176.0402, 0.3233,
0.3323

■ 4.1201, 0.3501,
0.3399

216.5018, 0.3226,
0.3321

■ 1.7410, 0.3627,
0.3430

262.7317, 0.3220,

■ 0.4500, 0.4497,

0.3319

0.3732

315.1145, 0.3214,
0.3318

0.0000, 0.0000,
0.0000

46.8047, 0.3292,
0.3341

46.8047, 0.3292,
0.3341

40.2800, 0.3494,
0.3397

54.1292, 0.3124,
0.3289

34.5218, 0.3738,
0.3454

62.2730, 0.2985,
0.3241

29.5036, 0.4027,
0.3512

71.2627, 0.2869,
0.3198

25.1950, 0.4365,
0.3564

81.1219, 0.2773,
0.3158

21.5636, 0.4747,
0.3604

90.2170, 0.2773,
0.3289

■ 18.5742, 0.5155,
0.3622

■ 16.1883, 0.5555,
0.3610

■ 14.3634, 0.5902,
0.3561

■ 13.0446, 0.6162,
0.3487

Harmonies

Analogous

The Analogous color harmony consists of three colors that are next to each other on the color wheel.



46.8047, 0.3251, 0.3266



46.8047, 0.3292, 0.3341



46.8047, 0.3288, 0.3404

Triad

The Triadic color harmony groups three colors that are evenly spaced from another and form a triangle on the color wheel.



46.8047, 0.3292, 0.3341



46.8047, 0.3076, 0.3385



46.8047, 0.3015, 0.3145

Complementary

The Complementary color scheme is a pair of colors which are on the opposite of each other on the color wheel.



46.8047, 0.3292, 0.3341



49.8798, 0.2977, 0.3238

Split Complementary

Split-complementary colors differ from the complementary color scheme. The scheme consists of three colors, the original color and two neighbors of the complement color.



46.8047, 0.2969, 0.3175



46.8047, 0.3292, 0.3341



46.8047, 0.3004, 0.3313

Square

The Square scheme is like the rectangle color scheme, but the four colors are evenly spaced on the color wheel.



46.8047, 0.3292, 0.3341



46.8047, 0.3162, 0.3431



46.8047, 0.2965, 0.3236



46.8047, 0.3091, 0.3154

Rectangle

The Rectangle color scheme consists of four colors that form a rectangle on the color wheel.



46.8047, 0.3292, 0.3341



46.8047, 0.3260, 0.3430



46.8047, 0.2965, 0.3236



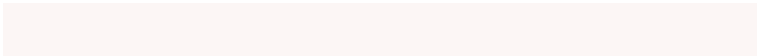
46.8047, 0.2995, 0.3151

Sweetspot

The Sweet Spot groups the original color and five complimentary colors.



46.8068, 0.3292, 0.3341



93.5530, 0.3175, 0.3305



45.8722, 0.3169, 0.3099



20.2466, 0.3188, 0.3310



0.0000, 0.0000, 0.0000



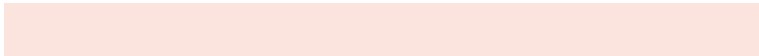
21.4041, 0.3127, 0.3290

Same Dimension

The Same Dimension uses a secret algorithm to generate beautiful new colors.



46.8068, 0.3292, 0.3341



81.8066, 0.3337, 0.3354



50.6872, 0.3279, 0.3458



10.4104, 0.3284, 0.3339



8.6549, 0.6145, 0.3503



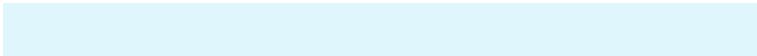
0.4758, 0.5714, 0.3845

Inverse Universe

The Inverse Universe completely reimagines the original color for something new.



49.8798, 0.2977, 0.3238



88.6065, 0.2941, 0.3225



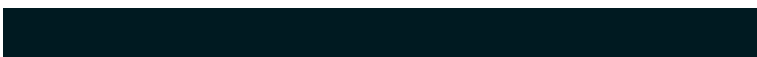
45.9513, 0.2976, 0.3116



11.0606, 0.2984, 0.3241



17.7852, 0.2059, 0.2614



0.8602, 0.2106, 0.2781

Previews

White Background



This preview shows how the Yxy color 46.8047, 0.3292, 0.3341 looks on a white background.

Color Contrast Check

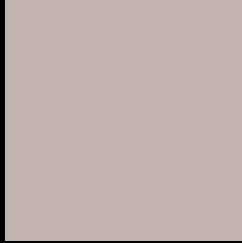
Large Text (above 18pt) WCAG AA × Fail

Any Text WCAG AA × Fail

Large Text (above 18pt) WCAG AAA × Fail

Any Text WCAG AAA × Fail

Black Background



This preview shows how the Yxy color 46.8047, 0.3292, 0.3341 looks on a black background.

Color Contrast Check

Large Text (above 18pt) WCAG AA ✓ Pass

Any Text WCAG AA ✓ Pass

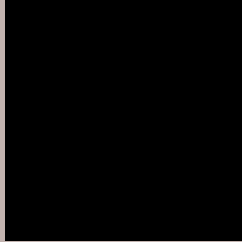
Large Text (above 18pt) WCAG AAA ✓ Pass

Any Text WCAG AAA ✓ Pass

If you want to check with other color combinations, try the [Color Contrast Checker](#).

Yxy 46.8047, 0.3292, 0.3341

Background



This preview shows how black text looks on a background with the Yxy color 46.8047, 0.3292, 0.3341.



This preview shows how white text looks on a background with the Yxy color 46.8047, 0.3292, 0.3341.

Color Blindness Simulation

Color vision deficiency is a very complex topic, and I could not describe the different causes any better than Wikipedia does, so if you want to learn more, you should check out their [article about color blindness](#).

Dichromacy



Original Color

46.8047, 0.3292, 0.3341

Protanopia

46.7471, 0.3219, 0.3355

Deuteranopia

46.7418, 0.3359, 0.3291



Tritanopia

46.8977, 0.3187, 0.3128

Trichromacy



Original Color

46.8047, 0.3292, 0.3341

Protanomaly

46.7243, 0.3247, 0.3342

Deuteranomaly

46.7210, 0.3331, 0.3303

Tritanomaly

46.9457, 0.3218, 0.3202

Monochromacy



Original Color

46.8047, 0.3292, 0.3341

Achromatopsia

47.3531, 0.3127, 0.3290

Achromatomaly

47.3160, 0.3186, 0.3316

CSS Examples

Text

The CSS property to change the color of the text to Yxy 46.8047, 0.3292, 0.3341 is called "color". The color property can be set on classes, ids or directly on the HTML element.

This example shows how text in the color `rgb(194, 179, 175)` looks like.

```
.text, #text, p{  
    color:rgb(194, 179, 175)  
}
```

If you want to add a text shadow in that color use the text-shadow property, you can generate a text shadow directly with our [CSS Text Shadow Generator](#).

Here you see how black text with a 4 pixel rgb(194, 179, 175) colored shadow looks like.

```
.shadow{ text-shadow: 4px 4px 2px rgb(194, 179, 175) }
```

Border

The CSS property to change the border of an element to Yxy 46.8047, 0.3292, 0.3341 is called "border". The border property can be set on classes, ids or directly on the HTML element.

This example shows the color as border, it can be applied via the CSS property "border" or "border-color".

```
.border, #border, table{ border:4px solid rgb(194, 179, 175) }
```

If only the border color should be changed use the property `border-color`.

```
.border{ border-color:rgb(194, 179, 175) }
```

If you want to add a box shadow in that color use:

Here you see how a box with a 4 pixel `rgb(194, 179, 175)` colored shadow looks like.

```
.boxshadow{ -moz-box-shadow:4px 4px 4px  
4px rgb(194, 179, 175); -webkit-box-  
shadow:4px 4px 4px 4px rgb(194, 179, 175);  
box-shadow:4px 4px 4px 4px rgb(194, 179,  
175) }
```


Background

The CSS property to change the background color of an element to Yxy 46.8047, 0.3292, 0.3341 is called "background". The background property can be set on classes, ids or directly on the HTML element.

```
.background, #background, body{  
background: rgb(194, 179, 175) }
```

If only the background color should be changed can be used:

```
.background{ background-color: rgb(194,  
179, 175) }
```

This example shows the color as background, it is applied via the CSS property "background".

To optimize and compress your CSS code, you can use our [online CSS compressor and optimizer](#) based on csstidy. If you want to create a linear or radial gradient as background or border, check our [CSS Gradient Generator](#).

Hey! You found this booklet interesting? Support Converting Colors with the new Membership Option!

The pro membership hides all ads, plus gives you double the colors in the color bucket, and more awesome pro features!

[Learn more, Memberships starting at \\$2.50/m!](#)

**Follow me
on Twitter!**

@ConvertingColor