

Converting Colors

$Yxy(47.0445, 0.3250, 0.3242)$

Have a look what the booklet for
Yxy(47.0445, 0.3250, 0.3242)
contains.

Yxy(46.9540, 0.3252, 0.3240)	3
<i>Conversions</i>	4
<i>Details</i>	6
<i>Harmonies</i>	12
<i>Previews</i>	24
<i>Color Blindness Simulation</i>	27
<i>CSS Examples</i>	30

Color

Yxy(46.9540, 0.3252, 0.3240)

Conversions

Conversions Part 1

Format	Color
Hex	C4B2B6
RGB	196, 178, 182
RGB Percent	77%, 70%, 71%
CMY	0.2314, 0.3019, 0.2862
CMYK	0.00, 0.09, 0.07, 0.23
HSL	347°, 13%, 73%
HSV	347°, 9%, 77%
XYZ	47.1279, 46.9540, 50.8378
YIQ	183.8380, 9.4440, 5.0600

Conversions

Conversions Part 2

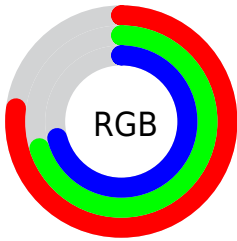
Format	Color
R_{YB}	196, 178, 182
Decimal	12890806
CIE Lab	74.16, 7.12, 0.29
CIE LCh	74, 7.130, 2.343
Yxy	46.9540, 0.3252, 0.3240
Android (android.graphics.Color)	4291080886 (0xFFC4B2B6)
YUV	183.8380, -0.9061, 10.6661
Hunter-Lab	68.5230, 2.8513, 3.9783

Details

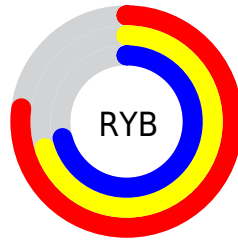
The Yxy color **46.9540, 0.3252, 0.3240** is a light color, and the websafe version is hex **CCCCCC**. A complement of this color would be **52.7484, 0.3015, 0.3341**, and the grayscale version is **47.8408, 0.3127, 0.3290**.

A 20% lighter version of the original color is **85.9013, 0.3231, 0.3251**, and **22.0030, 0.3288, 0.3222** is the 20% darker color. If you saturate the color by 10%, you get **39.1092, 0.3418, 0.3182**, and if you desaturate by 10%, it is **55.9858, 0.3117, 0.3294**.

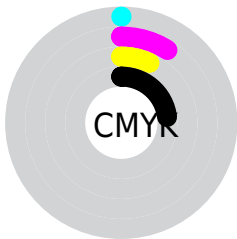
Distribution



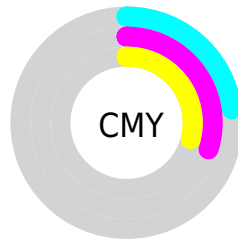
- Red (77%)
- Green (70%)
- Blue (71%)



- Red (77%)
- Yellow (70%)
- Blue (71%)



- Cyan (0%)
- Magenta (9%)
- Yellow (7%)
- Black (23%)



- Cyan (23%)
- Magenta (30%)
- Yellow (29%)

Brightness & Saturation Gradients


These gradients show how the Yxy color 46.9540, 0.3252, 0.3240 changes by changing the brightness by 10 percent. The first figure shows a shift by +10% for each color and the second figure -10%.

Similar to the brightness gradients but the following saturation gradients show a change of the Yxy color 46.9540, 0.3252, 0.3240 by changing the saturation by 10% instead.


 46.9540, 0.3252,
0.3240

 46.9540, 0.3252,
0.3240


374.6309, 0.3190,
0.3265

 32.9993, 0.3268,
0.3234


 85.6450, 0.3229,
0.3249

 22.1259, 0.3288,
0.3226


111.1500, 0.3221,
0.3253

 13.9494, 0.3314,
0.3215

141.2739, 0.3214,
0.3255

 8.0855, 0.3352,
0.3200

176.4012, 0.3207,
0.3258

 4.1497, 0.3408,
0.3177

216.9161, 0.3202,
0.3260

 1.7577, 0.3501,
0.3139

263.2031, 0.3197,

 0.4606, 0.3938,

0.3262

0.2965

315.6465, 0.3193,
0.3264

0.0000, 0.0000,
0.0000

46.9540, 0.3252,
0.3240

46.9540, 0.3252,
0.3240

39.1092, 0.3418,
0.3182

55.9858, 0.3117,
0.3294

32.3960, 0.3623,
0.3122

66.2448, 0.3008,
0.3344

26.7639, 0.3873,
0.3062

77.7768, 0.2919,
0.3390

22.1560, 0.4173,
0.3008

89.7243, 0.2845,
0.3417

18.5101, 0.4523,
0.2966

90.4749, 0.2784,
0.3289

■ 15.7576, 0.4912,
0.2946

■ 13.8201, 0.5314,
0.2958

■ 12.6061, 0.5690,
0.3007

■ 11.9581, 0.5999,
0.3085

Harmonies

Analogous

The Analogous color harmony consists of three colors that are next to each other on the color wheel.



46.9540, 0.3159, 0.3167



46.9540, 0.3252, 0.3240



46.9540, 0.3311, 0.3327

Triad

The Triadic color harmony groups three colors that are evenly spaced from another and form a triangle on the color wheel.



46.9540, 0.3252, 0.3240



46.9540, 0.3193, 0.3460



46.9540, 0.2938, 0.3171

Complementary

The Complementary color scheme is a pair of colors which are on the opposite of each other on the color wheel.



46.9540, 0.3252, 0.3240



52.7484, 0.3015, 0.3341

Split Complementary

Split-complementary colors differ from the complementary color scheme. The scheme consists of three colors, the original color and two neighbors of the complement color.



46.9540, 0.2947, 0.3249



46.9540, 0.3252, 0.3240



46.9540, 0.3093, 0.3418

Square

The Square scheme is like the rectangle color scheme, but the four colors are evenly spaced on the color wheel.



46.9540, 0.3252, 0.3240



46.9540, 0.3277, 0.3455



46.9540, 0.3003, 0.3340



46.9540, 0.2979, 0.3127

Rectangle

The Rectangle color scheme consists of four colors that form a rectangle on the color wheel.



46.9540, 0.3252, 0.3240



46.9540, 0.3323, 0.3382



46.9540, 0.3003, 0.3340



46.9540, 0.2935, 0.3194

Sweetspot

The Sweet Spot groups the original color and five complimentary colors.



46.9561, 0.3252, 0.3240



94.8385, 0.3166, 0.3274



47.0087, 0.3102, 0.3065



20.0115, 0.3177, 0.3269



0.0000, 0.0000, 0.0000



21.4041, 0.3127, 0.3290

Same Dimension

The Same Dimension uses a secret algorithm to generate beautiful new colors.



46.9561, 0.3252, 0.3240



82.0647, 0.3282, 0.3229



48.7354, 0.3279, 0.3351



10.1138, 0.3255, 0.3239



7.6664, 0.5989, 0.3073



0.3420, 0.5351, 0.2721

Inverse Universe

The Inverse Universe completely reimagines the original color for something new.



46.9561, 0.3252, 0.3240



82.0647, 0.3282, 0.3229



50.7987, 0.2987, 0.3228



10.1138, 0.3255, 0.3239



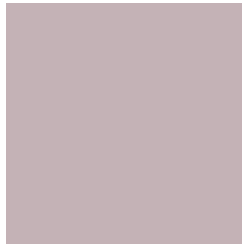
7.6664, 0.5989, 0.3073



0.3420, 0.5351, 0.2721

Previews

White Background



This preview shows how the Yxy color 46.9540, 0.3252, 0.3240 looks on a white background.

Color Contrast Check

Large Text (above 18pt) WCAG AA × Fail

Any Text WCAG AA × Fail

Large Text (above 18pt) WCAG AAA × Fail

Any Text WCAG AAA × Fail

Black Background



This preview shows how the Yxy color 46.9540, 0.3252, 0.3240 looks on a black background.

Color Contrast Check

Large Text (above 18pt) WCAG AA ✓ Pass

Any Text WCAG AA ✓ Pass

Large Text (above 18pt) WCAG AAA ✓ Pass

Any Text WCAG AAA ✓ Pass

If you want to check with other color combinations, try the [Color Contrast Checker](#).

Yxy 46.9540, 0.3252, 0.3240

Background



This preview shows how black text looks on a background with the Yxy color 46.9540, 0.3252, 0.3240.



This preview shows how white text looks on a background with the Yxy color 46.9540, 0.3252, 0.3240.

Color Blindness Simulation

Color vision deficiency is a very complex topic, and I could not describe the different causes any better than Wikipedia does, so if you want to learn more, you should check out their [article about color blindness](#).

Dichromacy



Original Color

46.9540, 0.3252, 0.3240

Protanopia

46.8227, 0.3138, 0.3251

Deuteranopia

47.1010, 0.3289, 0.3228



Tritanopia

47.0762, 0.3187, 0.3116

Trichromacy



Original Color

46.9540, 0.3252, 0.3240

Protanomaly

46.8802, 0.3181, 0.3252

Deuteranomaly

46.9638, 0.3280, 0.3228

Tritanomaly

46.9454, 0.3212, 0.3153

Monochromacy



Original Color

46.9540, 0.3252, 0.3240

Achromatopsia

47.9320, 0.3127, 0.3290

Achromatomaly

47.5662, 0.3170, 0.3277

CSS Examples

Text

The CSS property to change the color of the text to Yxy 46.9540, 0.3252, 0.3240 is called "color". The color property can be set on classes, ids or directly on the HTML element.

This example shows how text in the color `rgb(196, 178, 182)` looks like.

```
.text, #text, p{  
    color:rgb(196, 178, 182)  
}
```

If you want to add a text shadow in that color use the text-shadow property, you can generate a text shadow directly with our [CSS Text Shadow Generator](#).

Here you see how black text with a 4 pixel rgb(196, 178, 182) colored shadow looks like.

```
.shadow{ text-shadow: 4px 4px 2px rgb(196, 178, 182) }
```

Border

The CSS property to change the border of an element to Yxy 46.9540, 0.3252, 0.3240 is called "border". The border property can be set on classes, ids or directly on the HTML element.

This example shows the color as border, it can be applied via the CSS property "border" or "border-color".

```
.border, #border, table{ border:4px solid rgb(196, 178, 182) }
```

If only the border color should be changed use the property `border-color`.

```
.border{ border-color:rgb(196, 178, 182) }
```

If you want to add a box shadow in that color use:

Here you see how a box with a 4 pixel `rgb(196, 178, 182)` colored shadow looks like.

```
.boxshadow{ -moz-box-shadow:4px 4px 4px  
4px rgb(196, 178, 182); -webkit-box-  
shadow:4px 4px 4px 4px rgb(196, 178, 182);  
box-shadow:4px 4px 4px 4px rgb(196, 178,  
182) }
```


Background

The CSS property to change the background color of an element to Yxy 46.9540, 0.3252, 0.3240 is called "background". The background property can be set on classes, ids or directly on the HTML element.

```
.background, #background, body{  
background: rgb(196, 178, 182) }
```

If only the background color should be changed can be used:

```
.background{ background-color: rgb(196,  
178, 182) }
```

This example shows the color as background, it is applied via the CSS property "background".

To optimize and compress your CSS code, you can use our [online CSS compressor and optimizer](#) based on csstidy. If you want to create a linear or radial gradient as background or border, check our [CSS Gradient Generator](#).

Hey! You found this booklet interesting? Support Converting Colors with the new Membership Option!

The pro membership hides all ads, plus gives you double the colors in the color bucket, and more awesome pro features!

[Learn more, Memberships starting at \\$2.50/m!](#)

**Follow me
on Twitter!**

@ConvertingColor