

# Converting Colors

$Yxy(47.0687, 0.3369, 0.3279)$

Have a look what the booklet for  
Yxy(47.0687, 0.3369, 0.3279)  
contains.

<b>Yxy(47.0624, 0.3369, 0.3278)</b> .....	3
<b><i>Conversions</i></b> .....	4
<b><i>Details</i></b> .....	6
<b><i>Harmonies</i></b> .....	12
<b><i>Previews</i></b> .....	24
<b><i>Color Blindness Simulation</i></b> .....	27
<b><i>CSS Examples</i></b> .....	30

# Color

**Yxy(47.0624, 0.3369, 0.3278)**

# Conversions

## Conversions Part 1

Format	Color
Hex	CCB0B1
RGB	204, 176, 177
RGB Percent	80%, 69%, 69%
CMY	0.1999, 0.3098, 0.3058
CMYK	0.00, 0.14, 0.13, 0.20
HSL	358°, 22%, 75%
HSV	358°, 14%, 80%
XYZ	48.3689, 47.0624, 48.1392
YIQ	184.4860, 16.3670, 6.2470

# Conversions

## Conversions Part 2

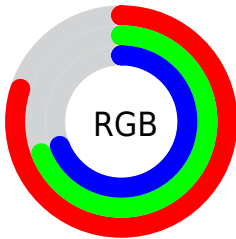
Format	Color
<a href="#">RYB</a>	<a href="#">204, 176, 177</a>
Decimal	<a href="#">13414577</a>
<a href="#">CIELab</a>	<a href="#">74.23, 10.27, 3.21</a>
<a href="#">CIElCh</a>	<a href="#">74, 10.758, 17.342</a>
<a href="#">Yxy</a>	<a href="#">47.0624, 0.3369, 0.3278</a>
<a href="#">Android (android.graphics.Color)</a>	<a href="#">4291604657 (0xFFCCB0B1)</a>
<a href="#">YUV</a>	<a href="#">184.4860, -3.6906, 17.1138</a>
<a href="#">Hunter-Lab</a>	<a href="#">68.6020, 5.8005, 6.4167</a>

# Details

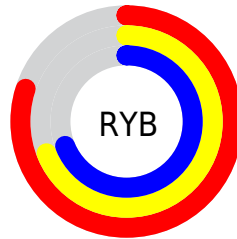
The Yxy color **47.0624, 0.3369, 0.3278** is a light color, and the websafe version is hex **CC9999**. A complement of this color would be **56.7377, 0.2926, 0.3302**, and the grayscale version is **48.2324, 0.3127, 0.3290**.

A 20% lighter version of the original color is **84.8564, 0.3279, 0.3281**, and **22.1052, 0.3451, 0.3274** is the 20% darker color. If you saturate the color by 10%, you get **38.9279, 0.3598, 0.3269**, and if you desaturate by 10%, it is **56.5164, 0.3186, 0.3287**.

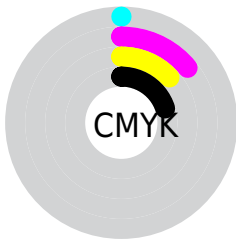
# Distribution



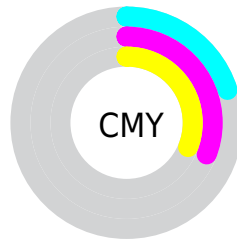
- Red (80%)
- Green (69%)
- Blue (69%)



- Red (80%)
- Yellow (69%)
- Blue (69%)



- Cyan (0%)
- Magenta (14%)
- Yellow (13%)
- Black (20%)



- Cyan (20%)
- Magenta (31%)
- Yellow (31%)


# Brightness & Saturation Gradients

These gradients show how the Yxy color 47.0624, 0.3369, 0.3278 changes by changing the brightness by 10 percent. The first figure shows a shift by +10% for each color and the second figure -10%.

Similar to the brightness gradients but the following saturation gradients show a change of the Yxy color 47.0624, 0.3369, 0.3278 by changing the saturation by 10% instead.




 47.0624, 0.3369,  
0.3278

 47.0624, 0.3369,  
0.3278

375.0636, 0.3248,  
0.3285

 33.0850, 0.3399,  
0.3276


 85.8068, 0.3325,  
0.3281

 22.1916, 0.3439,  
0.3273


111.3425, 0.3308,  
0.3282

 13.9977, 0.3491,  
0.3269


141.4998, 0.3294,  
0.3283

 8.1191, 0.3564,  
0.3263

176.6631, 0.3282,  
0.3283

 4.1712, 0.3674,  
0.3253

217.2167, 0.3272,  
0.3284

 1.7698, 0.3858,  
0.3233

263.5450, 0.3263,

 0.4683, 0.4799,

0.3284

0.3230

316.0325, 0.3255,  
0.3285

0.0000, 0.0000,  
0.0000

47.0624, 0.3369,  
0.3278

47.0624, 0.3369,  
0.3278

38.9279, 0.3598,  
0.3269

56.5164, 0.3186,  
0.3287

32.0483, 0.3882,  
0.3260

67.3382, 0.3039,  
0.3295

26.3630, 0.4228,  
0.3251

79.5815, 0.2921,  
0.3303

21.8041, 0.4639,  
0.3245

91.5806, 0.2827,  
0.3289

18.2967, 0.5097,  
0.3243

■ 15.7567, 0.5564,  
0.3247

■ 14.0876, 0.5975,  
0.3259

■ 13.1724, 0.6260,  
0.3276

■ 12.8569, 0.6367,  
0.3281

# Harmonies

## Analogous

The Analogous color harmony consists of three colors that are next to each other on the color wheel.



47.0624, 0.3249, 0.3156



47.0624, 0.3369, 0.3278



47.0624, 0.3423, 0.3406

# Triad

The Triadic color harmony groups three colors that are evenly spaced from another and form a triangle on the color wheel.



47.0624, 0.3369, 0.3278



47.0624, 0.3151, 0.3526



47.0624, 0.2865, 0.3070

# Complementary

The Complementary color scheme is a pair of colors which are on the opposite of each other on the color wheel.



47.0624, 0.3369, 0.3278



56.7377, 0.2926, 0.3302

# Split Complementary

Split-complementary colors differ from the complementary color scheme. The scheme consists of three colors, the original color and two neighbors of the complement color.



47.0624, 0.2840, 0.3163



47.0624, 0.3369, 0.3278



47.0624, 0.3003, 0.3430

# Square

The Square scheme is like the rectangle color scheme, but the four colors are evenly spaced on the color wheel.



47.0624, 0.3369, 0.3278



47.0624, 0.3294, 0.3553



47.0624, 0.2890, 0.3295



47.0624, 0.2958, 0.3037



# Rectangle

The Rectangle color scheme consists of four colors that form a rectangle on the color wheel.



47.0624, 0.3369, 0.3278



47.0624, 0.3413, 0.3479



47.0624, 0.2890, 0.3295



47.0624, 0.2848, 0.3095

# Sweetspot

The Sweet Spot groups the original color and five complimentary colors.



47.0645, 0.3369, 0.3278



93.0470, 0.3191, 0.3287



48.0529, 0.3131, 0.2953



19.6449, 0.3204, 0.3286



0.0000, 0.0000, 0.0000



21.4041, 0.3127, 0.3290



# Same Dimension

The Same Dimension uses a secret algorithm to generate beautiful new colors.



47.0645, 0.3369, 0.3278



74.3963, 0.3421, 0.3276



52.2015, 0.3356, 0.3445



11.2202, 0.3284, 0.3282



8.0933, 0.6357, 0.3276



0.4199, 0.6210, 0.3195



# Inverse Universe

The Inverse Universe completely reimagines the original color for something new.



47.0645, 0.3369, 0.3278



74.3963, 0.3421, 0.3276



51.0311, 0.2915, 0.3130



11.2202, 0.3284, 0.3282



8.0933, 0.6357, 0.3276

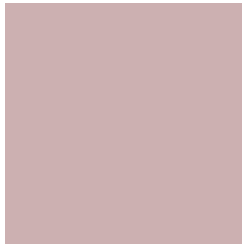


0.4199, 0.6210, 0.3195



# Previews

## White Background



This preview shows how the Yxy color 47.0624, 0.3369, 0.3278 looks on a white background.

## Color Contrast Check

Large Text (above 18pt) WCAG AA × Fail

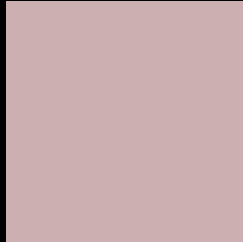
Any Text WCAG AA × Fail

Large Text (above 18pt) WCAG AAA × Fail

Any Text WCAG AAA × Fail



# Black Background



This preview shows how the Yxy color 47.0624, 0.3369, 0.3278 looks on a black background.

## Color Contrast Check

Large Text (above 18pt) WCAG AA ✓ Pass

Any Text WCAG AA ✓ Pass

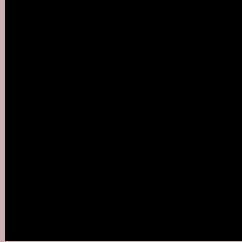
Large Text (above 18pt) WCAG AAA ✓ Pass

Any Text WCAG AAA ✓ Pass

If you want to check with other color combinations, try the [Color Contrast Checker](#).

**Yxy 47.0624, 0.3369, 0.3278**

## Background



This preview shows how black text looks on a background with the Yxy color 47.0624, 0.3369, 0.3278.



This preview shows how white text looks on a background with the Yxy color 47.0624, 0.3369, 0.3278.

# Color Blindness Simulation

Color vision deficiency is a very complex topic, and I could not describe the different causes any better than Wikipedia does, so if you want to learn more, you should check out their [article about color blindness](#).

## Dichromacy



### Original Color

47.0624, 0.3369, 0.3278

### Protanopia

47.1903, 0.3177, 0.3316

### Deuteranopia

47.1752, 0.3349, 0.3291



## Tritanopia

46.8821, 0.3286, 0.3119

# Trichromacy



## Original Color

47.0624, 0.3369, 0.3278

## Protanomaly

47.2346, 0.3248, 0.3303

## Deuteranomaly

47.3151, 0.3358, 0.3291

## Tritanomaly

47.0998, 0.3319, 0.3180

# Monochromacy



## Original Color

47.0624, 0.3369, 0.3278

## Achromatopsia

47.9320, 0.3127, 0.3290

## Achromatomaly

47.4603, 0.3213, 0.3290

# CSS Examples

## Text

The CSS property to change the color of the text to Yxy 47.0624, 0.3369, 0.3278 is called "color". The color property can be set on classes, ids or directly on the HTML element.

This example shows how text in the color `rgb(204, 176, 177)` looks like.

```
.text, #text, p{  
    color:rgb(204, 176, 177)  
}
```

If you want to add a text shadow in that color use the text-shadow property, you can generate a text shadow directly with our [CSS Text Shadow Generator](#).

Here you see how black text with a 4 pixel rgb(204, 176, 177) colored shadow looks like.

```
.shadow{ text-shadow: 4px 4px 2px rgb(204, 176, 177) }
```

## Border

The CSS property to change the border of an element to Yxy 47.0624, 0.3369, 0.3278 is called "border". The border property can be set on classes, ids or directly on the HTML element.

This example shows the color as border, it can be applied via the CSS property "border" or "border-color".

```
.border, #border, table{ border:4px solid rgb(204, 176, 177) }
```

If only the border color should be changed use the property `border-color`.

```
.border{ border-color:rgb(204, 176, 177) }
```

If you want to add a box shadow in that color use:

Here you see how a box with a 4 pixel `rgb(204, 176, 177)` colored shadow looks like.

```
.boxshadow{ -moz-box-shadow:4px 4px 4px  
4px rgb(204, 176, 177); -webkit-box-  
shadow:4px 4px 4px 4px rgb(204, 176, 177);  
box-shadow:4px 4px 4px 4px rgb(204, 176,  
177) }
```



# Background

The CSS property to change the background color of an element to Yxy 47.0624, 0.3369, 0.3278 is called "background". The background property can be set on classes, ids or directly on the HTML element.

```
.background, #background, body{  
background: rgb(204, 176, 177) }
```

If only the background color should be changed can be used:

```
.background{ background-color: rgb(204,  
176, 177) }
```

This example shows the color as background, it is applied via the CSS property "background".

To optimize and compress your CSS code, you can use our [online CSS compressor and optimizer](#) based on csstidy. If you want to create a linear or radial gradient as background or border, check our [CSS Gradient Generator](#).

Hey! You found this booklet interesting? Support Converting Colors with the new Membership Option!

The pro membership hides all ads, plus gives you double the colors in the color bucket, and more awesome pro features!

**[Learn more, Memberships starting at \\$2.50/m!](#)**

**Follow me  
on Twitter!**

@ConvertingColor