

Converting Colors

$Y_{xy}(47.1291, 0.3269, 0.3269)$

Have a look what the booklet for
Yxy(47.1291, 0.3269, 0.3269)
contains.

Yxy(47.2712, 0.3268, 0.3278)	3
Conversions	4
Details	6
Harmonies	12
Previews	24
Color Blindness Simulation	27
CSS Examples	30

Color

Yxy(47.2712, 0.3268, 0.3278)

Conversions

Conversions Part 1

Format	Color
Hex	C4B3B4
RGB	196, 179, 180
RGB Percent	77%, 70%, 71%
CMY	0.2313, 0.2980, 0.2942
CMYK	0.00, 0.09, 0.08, 0.23
HSL	357°, 13%, 74%
HSV	357°, 9%, 77%
XYZ	47.1270, 47.2712, 49.8093
YIQ	184.1970, 9.8110, 3.9150

Conversions

Conversions Part 2

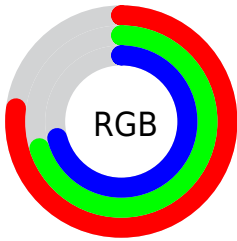
Format	Color
RYB	196, 179, 180
Decimal	12891060
CIELab	74.36, 6.25, 1.69
CIELCh	74, 6.474, 15.172
Yxy	47.2712, 0.3268, 0.3278
Android (android.graphics.Color)	4291081140 (0xFFC4B3B4)
YUV	184.1970, -2.0691, 10.3512
Hunter-Lab	68.7541, 2.0320, 5.1749

Details

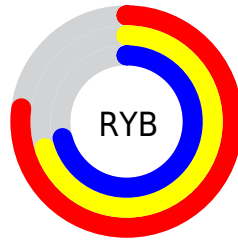
The Yxy color $47.2712, 0.3268, 0.3278$ is a light color, and the websafe version is hex `CCCCCC`. A complement of this color would be $53.0186, 0.3001, 0.3302$, and the grayscale version is $48.0570, 0.3127, 0.3290$.

A 20% lighter version of the original color is $86.3554, 0.3243, 0.3281$, and $22.2048, 0.3309, 0.3273$ is the 20% darker color. If you saturate the color by 10%, you get $39.2630, 0.3467, 0.3263$, and if you desaturate by 10%, it is $56.5009, 0.3108, 0.3292$.

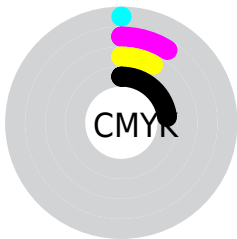
Distribution



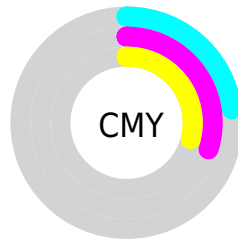
- Red (77%)
- Green (70%)
- Blue (71%)



- Red (77%)
- Yellow (70%)
- Blue (71%)



- Cyan (0%)
- Magenta (9%)
- Yellow (8%)
- Black (23%)





- Cyan (23%)
- Magenta (30%)
- Yellow (29%)

Brightness & Saturation Gradients


These gradients show how the Yxy color 47.2712, 0.3268, 0.3278 changes by changing the brightness by 10 percent. The first figure shows a shift by +10% for each color and the second figure -10%.


Similar to the brightness gradients but the following saturation gradients show a change of the Yxy color 47.2712, 0.3268, 0.3278 by changing the saturation by 10% instead.


 47.2712, 0.3268,
0.3278

 47.2712, 0.3268,
0.3278


375.8960, 0.3198,
0.3284

 33.2501, 0.3286,
0.3276


 86.1183, 0.3242,
0.3280

 22.3181, 0.3308,
0.3274


111.7131, 0.3233,
0.3281

 14.0908, 0.3338,
0.3271


141.9346, 0.3225,
0.3282

 8.1839, 0.3381,
0.3267

177.1671, 0.3218,
0.3283

 4.2128, 0.3444,
0.3260

217.7951, 0.3212,
0.3283

 1.7933, 0.3550,
0.3247

264.2030, 0.3206,

 0.4830, 0.4072,

0.3284

0.3216

316.7752, 0.3202,
0.3284

0.0000, 0.0000,
0.0000

47.2712, 0.3268,
0.3278

47.2712, 0.3268,
0.3278

39.2630, 0.3467,
0.3263

56.5009, 0.3108,
0.3292

32.4193, 0.3715,
0.3248

66.9937, 0.2980,
0.3304

26.6876, 0.4021,
0.3234

78.7969, 0.2876,
0.3316

22.0093, 0.4389,
0.3221

90.4069, 0.2790,
0.3301

18.3203, 0.4816,
0.3213

90.4797, 0.2784,
0.3289

■ 15.5494, 0.5277,
0.3213

■ 13.6160, 0.5724,
0.3223

■ 12.4256, 0.6090,
0.3244

■ 11.8265, 0.6322,
0.3268

Harmonies

Analogous

The Analogous color harmony consists of three colors that are next to each other on the color wheel.



47.2712, 0.3195, 0.3204



47.2712, 0.3268, 0.3278



47.2712, 0.3303, 0.3356

Triad

The Triadic color harmony groups three colors that are evenly spaced from another and form a triangle on the color wheel.



47.2712, 0.3268, 0.3278



47.2712, 0.3149, 0.3433



47.2712, 0.2966, 0.3161

Complementary

The Complementary color scheme is a pair of colors which are on the opposite of each other on the color wheel.



47.2712, 0.3268, 0.3278



53.0186, 0.3001, 0.3302

Split Complementary

Split-complementary colors differ from the complementary color scheme. The scheme consists of three colors, the original color and two neighbors of the complement color.



47.2712, 0.2954, 0.3220



47.2712, 0.3268, 0.3278



47.2712, 0.3059, 0.3379

Square

The Square scheme is like the rectangle color scheme, but the four colors are evenly spaced on the color wheel.



47.2712, 0.3268, 0.3278



47.2712, 0.3234, 0.3447



47.2712, 0.2988, 0.3300



47.2712, 0.3020, 0.3137

Rectangle

The Rectangle color scheme consists of four colors that form a rectangle on the color wheel.



47.2712, 0.3268, 0.3278



47.2712, 0.3300, 0.3401



47.2712, 0.2988, 0.3300



47.2712, 0.2957, 0.3177

Sweetspot

The Sweet Spot groups the original color and five complimentary colors.



47.2733, 0.3268, 0.3278



94.7602, 0.3174, 0.3286



47.8139, 0.3127, 0.3079



19.9904, 0.3186, 0.3285



0.0000, 0.0000, 0.0000



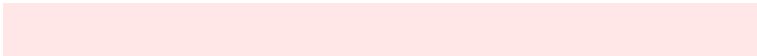
21.4041, 0.3127, 0.3290

Same Dimension

The Same Dimension uses a secret algorithm to generate beautiful new colors.



47.2733, 0.3268, 0.3278



83.3437, 0.3295, 0.3276



50.2714, 0.3267, 0.3383



10.0871, 0.3280, 0.3277



7.5611, 0.6329, 0.3260



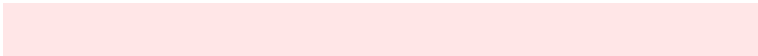
0.3300, 0.6077, 0.3121

Inverse Universe

The Inverse Universe completely reimagines the original color for something new.



47.2733, 0.3268, 0.3278



83.3437, 0.3295, 0.3276



49.8145, 0.2994, 0.3195



10.0871, 0.3280, 0.3277



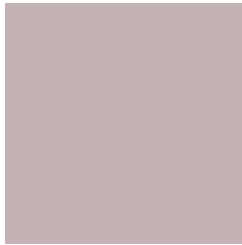
7.5611, 0.6329, 0.3260



0.3300, 0.6077, 0.3121

Previews

White Background



This preview shows how the Yxy color 47.2712, 0.3268, 0.3278 looks on a white background.

Color Contrast Check

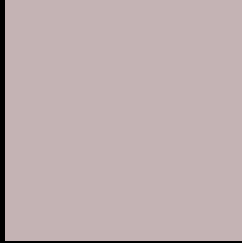
Large Text (above 18pt) WCAG AA × Fail

Any Text WCAG AA × Fail

Large Text (above 18pt) WCAG AAA × Fail

Any Text WCAG AAA × Fail

Black Background



This preview shows how the Yxy color 47.2712, 0.3268, 0.3278 looks on a black background.

Color Contrast Check

Large Text (above 18pt) WCAG AA ✓ Pass

Any Text WCAG AA ✓ Pass

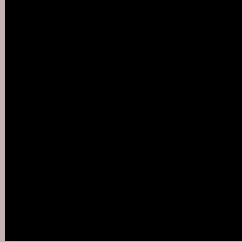
Large Text (above 18pt) WCAG AAA ✓ Pass

Any Text WCAG AAA ✓ Pass

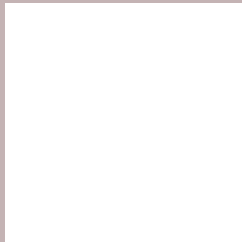
If you want to check with other color combinations, try the [Color Contrast Checker](#).

Yxy 47.2712, 0.3268, 0.3278

Background



This preview shows how black text looks on a background with the Yxy color 47.2712, 0.3268, 0.3278.



This preview shows how white text looks on a background with the Yxy color 47.2712, 0.3268, 0.3278.

Color Blindness Simulation

Color vision deficiency is a very complex topic, and I could not describe the different causes any better than Wikipedia does, so if you want to learn more, you should check out their [article about color blindness](#).

Dichromacy



Original Color

47.2712, 0.3268, 0.3278

Protanopia

47.2724, 0.3161, 0.3290

Deuteranopia

47.1571, 0.3315, 0.3253



Tritanopia

47.2116, 0.3196, 0.3117

Trichromacy



Original Color

47.2712, 0.3268, 0.3278

Protanomaly

47.3311, 0.3205, 0.3290

Deuteranomaly

47.2782, 0.3295, 0.3265

Tritanomaly

47.2990, 0.3219, 0.3178

Monochromacy



Original Color

47.2712, 0.3268, 0.3278

Achromatopsia

47.9320, 0.3127, 0.3290

Achromatomaly

47.5662, 0.3170, 0.3277

CSS Examples

Text

The CSS property to change the color of the text to Yxy 47.2712, 0.3268, 0.3278 is called "color". The color property can be set on classes, ids or directly on the HTML element.

This example shows how text in the color `rgb(196, 179, 180)` looks like.

```
.text, #text, p{  
    color:rgb(196, 179, 180)  
}
```

If you want to add a text shadow in that color use the text-shadow property, you can generate a text shadow directly with our [CSS Text Shadow Generator](#).

Here you see how black text with a 4 pixel rgb(196, 179, 180) colored shadow looks like.

```
.shadow{ text-shadow: 4px 4px 2px rgb(196, 179, 180) }
```

Border

The CSS property to change the border of an element to Yxy 47.2712, 0.3268, 0.3278 is called "border". The border property can be set on classes, ids or directly on the HTML element.

This example shows the color as border, it can be applied via the CSS property "border" or "border-color".

```
.border, #border, table{ border:4px solid rgb(196, 179, 180) }
```

If only the border color should be changed use the property `border-color`.

```
.border{ border-color:rgb(196, 179, 180) }
```

If you want to add a box shadow in that color use:

Here you see how a box with a 4 pixel `rgb(196, 179, 180)` colored shadow looks like.

```
.boxshadow{ -moz-box-shadow:4px 4px 4px  
4px rgb(196, 179, 180); -webkit-box-  
shadow:4px 4px 4px 4px rgb(196, 179, 180);  
box-shadow:4px 4px 4px 4px rgb(196, 179,  
180) }
```


Background

The CSS property to change the background color of an element to Yxy 47.2712, 0.3268, 0.3278 is called "background". The background property can be set on classes, ids or directly on the HTML element.

```
.background, #background, body{  
background: rgb(196, 179, 180) }
```

If only the background color should be changed can be used:

```
.background{ background-color: rgb(196,  
179, 180) }
```

This example shows the color as background, it is applied via the CSS property "background".

To optimize and compress your CSS code, you can use our [online CSS compressor and optimizer](#) based on csstidy. If you want to create a linear or radial gradient as background or border, check our [CSS Gradient Generator](#).

Hey! You found this booklet interesting? Support Converting Colors with the new Membership Option!

The pro membership hides all ads, plus gives you double the colors in the color bucket, and more awesome pro features!

[Learn more, Memberships starting at \\$2.50/m!](#)

**Follow me
on Twitter!**

@ConvertingColor