

# Converting Colors

$Yxy(47.4505, 0.3413, 0.3250)$

Have a look what the booklet for  
Yxy(47.4505, 0.3413, 0.3250)  
contains.

<b>Yxy(47.5759, 0.3416, 0.3254)</b> .....	3
<b>Conversions</b> .....	4
<b>Details</b> .....	6
<b>Harmonies</b> .....	12
<b>Previews</b> .....	24
<b>Color Blindness Simulation</b> .....	27
<b>CSS Examples</b> .....	30

# Color

**Yxy(47.5759, 0.3416, 0.3254)**

# Conversions

## Conversions Part 1

Format	Color
Hex	D2AFB2
RGB	210, 175, 178
RGB Percent	82%, 69%, 70%
CMY	0.1765, 0.3137, 0.3018
CMYK	0.00, 0.17, 0.15, 0.18
HSL	355°, 28%, 75%
HSV	355°, 17%, 82%
XYZ	49.9445, 47.5759, 48.6871
YIQ	185.8070, 19.8970, 8.3530

# Conversions

## Conversions Part 2

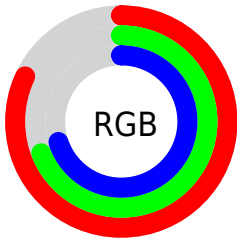
<b>Format</b>	<b>Color</b>
<b>R<sub>YB</sub></b>	210, 175, 178
Decimal	13807538
CIE <sub>Lab</sub>	74.56, 13.15, 3.19
CIE <sub>LCh</sub>	75, 13.530, 13.657
Yxy	47.5759, 0.3416, 0.3254
Android (android.graphics.Color)	4291997618 (0xFFD2AFB2)
YUV	185.8070, -3.8489, 21.2173
Hunter-Lab	68.9753, 8.5437, 6.4321

# Details

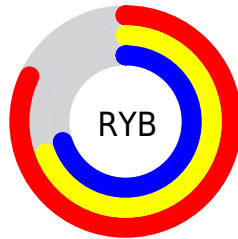
The Yxy color  $47.5759, 0.3416, 0.3254$  is a light color, and the websafe version is hex  $CC9999$ . A complement of this color would be  $59.7060, 0.2896, 0.3327$ , and the grayscale version is  $49.0044, 0.3127, 0.3290$ .

A 20% lighter version of the original color is  $84.3523, 0.3273, 0.3261$ , and  $22.3683, 0.3505, 0.3242$  is the 20% darker color. If you saturate the color by 10%, you get  $39.3117, 0.3647, 0.3231$ , and if you desaturate by 10%, it is  $57.2232, 0.3230, 0.3276$ .

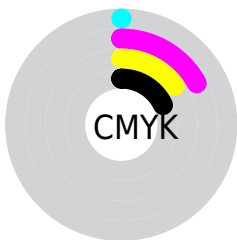
# Distribution



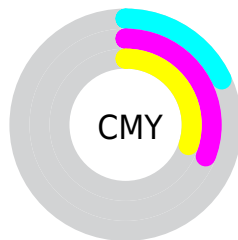
- Red (82%)
- Green (69%)
- Blue (70%)



- Red (82%)
- Yellow (69%)
- Blue (70%)



- Cyan (0%)
- Magenta (17%)
- Yellow (15%)
- Black (18%)




- Cyan (18%)
- Magenta (31%)
- Yellow (30%)


# Brightness & Saturation Gradients

These gradients show how the Yxy color 47.5759, 0.3416, 0.3254 changes by changing the brightness by 10 percent. The first figure shows a shift by +10% for each color and the second figure -10%.


Similar to the brightness gradients but the following saturation gradients show a change of the Yxy color 47.5759, 0.3416, 0.3254 by changing the saturation by 10% instead.





 47.5759, 0.3416,  
0.3254

 47.5759, 0.3416,  
0.3254

377.1086, 0.3271,  
0.3273

 33.4912, 0.3452,  
0.3249

 86.5726, 0.3363,  
0.3261

 22.5030, 0.3499,  
0.3242


112.2534, 0.3344,  
0.3264

 14.2269, 0.3561,  
0.3233


142.5683, 0.3327,  
0.3266

 8.2787, 0.3647,  
0.3219

177.9017, 0.3313,  
0.3268

 4.2738, 0.3777,  
0.3197

218.6381, 0.3300,  
0.3270

 1.8279, 0.3993,  
0.3158

265.1618, 0.3289,

 0.5044, 0.4908,

0.3271

0.3093

317.8571, 0.3280,  
0.3272

0.0000, 0.0000,  
0.0000

47.5759, 0.3416,  
0.3254

47.5759, 0.3416,  
0.3254

39.3117, 0.3647,  
0.3231

57.2232, 0.3230,  
0.3276

32.3611, 0.3933,  
0.3208

68.3062, 0.3081,  
0.3297

26.6584, 0.4279,  
0.3188

80.8825, 0.2961,  
0.3315

22.1296, 0.4685,  
0.3173

92.4247, 0.2862,  
0.3292

18.6929, 0.5134,  
0.3168

92.4401, 0.2860,  
0.3289

■ 16.2560, 0.5585,  
0.3178

■ 14.7113, 0.5978,  
0.3205

■ 13.9208, 0.6250,  
0.3244

■ 13.7444, 0.6315,  
0.3253

# Harmonies

## Analogous

The Analogous color harmony consists of three colors that are next to each other on the color wheel.



47.5759, 0.3257, 0.3107



47.5759, 0.3416, 0.3254



47.5759, 0.3496, 0.3415

# Triad

The Triadic color harmony groups three colors that are evenly spaced from another and form a triangle on the color wheel.



47.5759, 0.3416, 0.3254



47.5759, 0.3179, 0.3597



47.5759, 0.2791, 0.3024

# Complementary

The Complementary color scheme is a pair of colors which are on the opposite of each other on the color wheel.



47.5759, 0.3416, 0.3254



59.7060, 0.2896, 0.3327

# Split Complementary

Split-complementary colors differ from the complementary color scheme. The scheme consists of three colors, the original color and two neighbors of the complement color.



47.5759, 0.2772, 0.3148



47.5759, 0.3416, 0.3254



47.5759, 0.2992, 0.3485

# Square

The Square scheme is like the rectangle color scheme, but the four colors are evenly spaced on the color wheel.



47.5759, 0.3416, 0.3254



47.5759, 0.3355, 0.3618



47.5759, 0.2845, 0.3317



47.5759, 0.2897, 0.2975



# Rectangle

The Rectangle color scheme consists of four colors that form a rectangle on the color wheel.



47.5759, 0.3416, 0.3254



47.5759, 0.3492, 0.3510



47.5759, 0.2845, 0.3317



47.5759, 0.2775, 0.3058

# Sweetspot

The Sweet Spot groups the original color and five complimentary colors.



47.5780, 0.3416, 0.3254



91.4056, 0.3204, 0.3280



48.5071, 0.3117, 0.2877



19.3159, 0.3215, 0.3278



0.0000, 0.0000, 0.0000



21.4041, 0.3127, 0.3290



# Same Dimension

The Same Dimension uses a secret algorithm to generate beautiful new colors.



47.5780, 0.3416, 0.3254



69.0202, 0.3493, 0.3246



53.1905, 0.3415, 0.3459



11.8246, 0.3277, 0.3270



8.3911, 0.6296, 0.3242



0.4751, 0.5992, 0.3074



# Inverse Universe

The Inverse Universe completely reimagines the original color for something new.



47.5780, 0.3416, 0.3254



69.0202, 0.3493, 0.3246



53.2454, 0.2869, 0.3115



11.8246, 0.3277, 0.3270



8.3911, 0.6296, 0.3242



0.4751, 0.5992, 0.3074



# Previews

## White Background



This preview shows how the Yxy color 47.5759, 0.3416, 0.3254 looks on a white background.

## Color Contrast Check

Large Text (above 18pt) WCAG AA × Fail

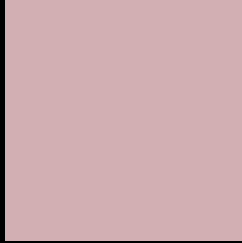
Any Text WCAG AA × Fail

Large Text (above 18pt) WCAG AAA × Fail

Any Text WCAG AAA × Fail



# Black Background



This preview shows how the Yxy color 47.5759, 0.3416, 0.3254 looks on a black background.

## Color Contrast Check

Large Text (above 18pt) WCAG AA ✓ Pass

Any Text WCAG AA ✓ Pass

Large Text (above 18pt) WCAG AAA ✓ Pass

Any Text WCAG AAA ✓ Pass

If you want to check with other color combinations, try the [Color Contrast Checker](#).

**Yxy 47.5759, 0.3416, 0.3254**

## Background



This preview shows how black text looks on a background with the Yxy color 47.5759, 0.3416, 0.3254.



This preview shows how white text looks on a background with the Yxy color 47.5759, 0.3416, 0.3254.

# Color Blindness Simulation

Color vision deficiency is a very complex topic, and I could not describe the different causes any better than Wikipedia does, so if you want to learn more, you should check out their [article about color blindness](#).

## Dichromacy



### Original Color

47.5759, 0.3416, 0.3254

### Protanopia

47.8092, 0.3169, 0.3303

### Deuteranopia

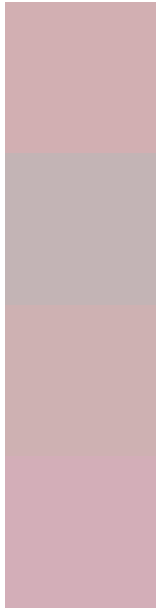
47.8925, 0.3357, 0.3291



## Tritanopia

47.7088, 0.3349, 0.3134

# Trichromacy



## Original Color

47.5759, 0.3416, 0.3254

## Protanomaly

47.5808, 0.3249, 0.3278

## Deuteranomaly

47.7804, 0.3377, 0.3278

## Tritanomaly

47.5817, 0.3375, 0.3170

# Monochromacy



## Original Color

47.5759, 0.3416, 0.3254

## Achromatopsia

49.1021, 0.3127, 0.3290

## Achromatomaly

48.4769, 0.3231, 0.3278

# CSS Examples

## Text

The CSS property to change the color of the text to Yxy 47.5759, 0.3416, 0.3254 is called "color". The color property can be set on classes, ids or directly on the HTML element.

This example shows how text in the color `rgb(210, 175, 178)` looks like.

```
.text, #text, p{  
    color:rgb(210, 175, 178)  
}
```

If you want to add a text shadow in that color use the text-shadow property, you can generate a text shadow directly with our [CSS Text Shadow Generator](#).

Here you see how black text with a 4 pixel rgb(210, 175, 178) colored shadow looks like.

```
.shadow{ text-shadow: 4px 4px 2px rgb(210, 175, 178) }
```

## Border

The CSS property to change the border of an element to Yxy 47.5759, 0.3416, 0.3254 is called "border". The border property can be set on classes, ids or directly on the HTML element.

This example shows the color as border, it can be applied via the CSS property "border" or "border-color".

```
.border, #border, table{ border:4px solid rgb(210, 175, 178) }
```

If only the border color should be changed use the property `border-color`.

```
.border{ border-color:rgb(210, 175, 178) }
```

If you want to add a box shadow in that color use:

Here you see how a box with a 4 pixel `rgb(210, 175, 178)` colored shadow looks like.

```
.boxshadow{ -moz-box-shadow:4px 4px 4px  
4px rgb(210, 175, 178); -webkit-box-  
shadow:4px 4px 4px 4px rgb(210, 175, 178);  
box-shadow:4px 4px 4px 4px rgb(210, 175,  
178) }
```



# Background

The CSS property to change the background color of an element to Yxy 47.5759, 0.3416, 0.3254 is called "background". The background property can be set on classes, ids or directly on the HTML element.

```
.background, #background, body{  
background: rgb(210, 175, 178) }
```

If only the background color should be changed can be used:

```
.background{ background-color: rgb(210,  
175, 178) }
```

This example shows the color as background, it is applied via the CSS property "background".

To optimize and compress your CSS code, you can use our [online CSS compressor and optimizer](#) based on csstidy. If you want to create a linear or radial gradient as background or border, check our [CSS Gradient Generator](#).

Hey! You found this booklet interesting? Support Converting Colors with the new Membership Option!

The pro membership hides all ads, plus gives you double the colors in the color bucket, and more awesome pro features!

**[Learn more, Memberships starting at \\$2.50/m!](#)**

**Follow me  
on Twitter!**

@ConvertingColor