

Converting Colors

$Yxy(47.5490, 0.3398, 0.3256)$

Have a look what the booklet for
Yxy(47.5490, 0.3398, 0.3256)
contains.

Yxy(47.2842, 0.3398, 0.3254)	3
Conversions	4
Details	6
Harmonies	12
Previews	24
Color Blindness Simulation	27
CSS Examples	30

Color

Yxy(47.2842, 0.3398, 0.3254)

Conversions

Conversions Part 1

Format	Color
Hex	D0AFB2
RGB	208, 175, 178
RGB Percent	82%, 69%, 70%
CMY	0.1844, 0.3137, 0.3019
CMYK	0.00, 0.16, 0.14, 0.18
HSL	355°, 26%, 75%
HSV	355°, 16%, 82%
XYZ	49.3767, 47.2842, 48.6501
YIQ	185.2090, 18.7050, 7.9290

Conversions

Conversions Part 2

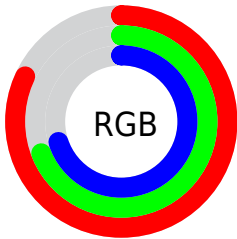
Format	Color
R _Y B	208, 175, 178
Decimal	13676466
CIE Lab	74.37, 12.41, 2.91
CIE LCh	74, 12.749, 13.210
Yxy	47.2842, 0.3398, 0.3254
Android (android.graphics.Color)	4291866546 (0xFFD0AFB2)
YUV	185.2090, -3.5540, 19.9877
Hunter-Lab	68.7635, 7.8385, 6.1868

Details

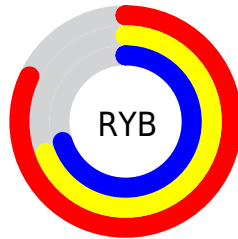
The Yxy color $47.2842, 0.3398, 0.3254$ is a light color, and the websafe version is hex `CC9999`. A complement of this color would be $58.6280, 0.2908, 0.3327$, and the grayscale version is $48.6514, 0.3127, 0.3290$.

A 20% lighter version of the original color is $84.3523, 0.3273, 0.3261$, and $22.1720, 0.3479, 0.3242$ is the 20% darker color. If you saturate the color by 10%, you get $39.0957, 0.3624, 0.3230$, and if you desaturate by 10%, it is $56.8286, 0.3216, 0.3277$.

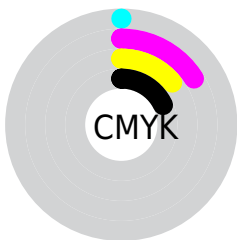
Distribution



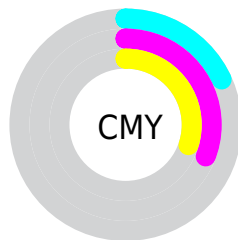
- Red (82%)
- Green (69%)
- Blue (70%)



- Red (82%)
- Yellow (69%)
- Blue (70%)



- Cyan (0%)
- Magenta (16%)
- Yellow (14%)
- Black (18%)





- Cyan (18%)
- Magenta (31%)
- Yellow (30%)

Brightness & Saturation Gradients


These gradients show how the Yxy color 47.2842, 0.3398, 0.3254 changes by changing the brightness by 10 percent. The first figure shows a shift by +10% for each color and the second figure -10%.


Similar to the brightness gradients but the following saturation gradients show a change of the Yxy color 47.2842, 0.3398, 0.3254 by changing the saturation by 10% instead.


 47.2842, 0.3398,
0.3254

 47.2842, 0.3398,
0.3254

375.9478, 0.3262,
0.3273

 33.2604, 0.3432,
0.3249


 86.1377, 0.3349,
0.3261

 22.3260, 0.3476,
0.3242


111.7361, 0.3330,
0.3264

 14.0966, 0.3534,
0.3233


141.9616, 0.3314,
0.3266

 8.1879, 0.3616,
0.3220

177.1985, 0.3301,
0.3268

 4.2154, 0.3738,
0.3199

217.8311, 0.3289,
0.3269

 1.7948, 0.3942,
0.3160

264.2440, 0.3279,

 0.4839, 0.4859,

0.3271

0.3082

316.8214, 0.3270,
0.3272

0.0000, 0.0000,
0.0000

47.2842, 0.3398,
0.3254

47.2842, 0.3398,
0.3254

39.0957, 0.3624,
0.3230

56.8286, 0.3216,
0.3277

32.1955, 0.3903,
0.3206

67.7797, 0.3071,
0.3299

26.5199, 0.4242,
0.3184

80.1936, 0.2953,
0.3318

21.9974, 0.4641,
0.3167

92.0602, 0.2856,
0.3303

18.5487, 0.5086,
0.3161

92.1482, 0.2849,
0.3289

■ 16.0848, 0.5537,
0.3170

■ 14.5023, 0.5938,
0.3196

■ 13.6734, 0.6225,
0.3236

■ 13.4551, 0.6308,
0.3249

Harmonies

Analogous

The Analogous color harmony consists of three colors that are next to each other on the color wheel.



47.2842, 0.3248, 0.3115



47.2842, 0.3398, 0.3254



47.2842, 0.3475, 0.3406

Triad

The Triadic color harmony groups three colors that are evenly spaced from another and form a triangle on the color wheel.



47.2842, 0.3398, 0.3254



47.2842, 0.3179, 0.3580



47.2842, 0.2809, 0.3040

Complementary

The Complementary color scheme is a pair of colors which are on the opposite of each other on the color wheel.



47.2842, 0.3398, 0.3254



58.6280, 0.2908, 0.3327

Split Complementary

Split-complementary colors differ from the complementary color scheme. The scheme consists of three colors, the original color and two neighbors of the complement color.



47.2842, 0.2792, 0.3158



47.2842, 0.3398, 0.3254



47.2842, 0.3002, 0.3475

Square

The Square scheme is like the rectangle color scheme, but the four colors are evenly spaced on the color wheel.



47.2842, 0.3398, 0.3254



47.2842, 0.3345, 0.3600



47.2842, 0.2862, 0.3318



47.2842, 0.2908, 0.2992

Rectangle

The Rectangle color scheme consists of four colors that form a rectangle on the color wheel.



47.2842, 0.3398, 0.3254



47.2842, 0.3472, 0.3496



47.2842, 0.2862, 0.3318



47.2842, 0.2793, 0.3073

Sweetspot

The Sweet Spot groups the original color and five complimentary colors.



47.2863, 0.3398, 0.3254



91.4092, 0.3204, 0.3279



48.1519, 0.3117, 0.2897



19.3168, 0.3215, 0.3277



0.0000, 0.0000, 0.0000



21.4041, 0.3127, 0.3290

Same Dimension

The Same Dimension uses a secret algorithm to generate beautiful new colors.



47.2863, 0.3398, 0.3254



70.3693, 0.3469, 0.3246



52.5558, 0.3399, 0.3451



11.8255, 0.3276, 0.3269



8.3932, 0.6289, 0.3238



0.4755, 0.5972, 0.3064

Inverse Universe

The Inverse Universe completely reimagines the original color for something new.



47.2863, 0.3398, 0.3254



70.3693, 0.3469, 0.3246



52.6075, 0.2882, 0.3124



11.8255, 0.3276, 0.3269



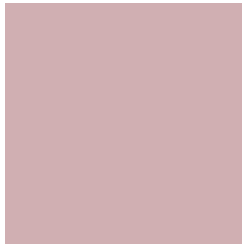
8.3932, 0.6289, 0.3238



0.4755, 0.5972, 0.3064

Previews

White Background



This preview shows how the Yxy color 47.2842, 0.3398, 0.3254 looks on a white background.

Color Contrast Check

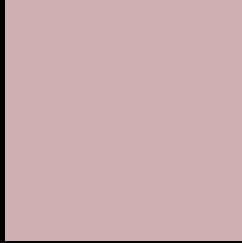
Large Text (above 18pt) WCAG AA × Fail

Any Text WCAG AA × Fail

Large Text (above 18pt) WCAG AAA × Fail

Any Text WCAG AAA × Fail

Black Background



This preview shows how the Yxy color 47.2842, 0.3398, 0.3254 looks on a black background.

Color Contrast Check

Large Text (above 18pt) WCAG AA ✓ Pass

Any Text WCAG AA ✓ Pass

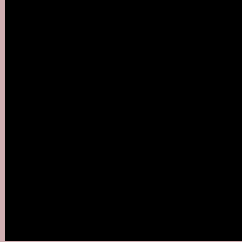
Large Text (above 18pt) WCAG AAA ✓ Pass

Any Text WCAG AAA ✓ Pass

If you want to check with other color combinations, try the [Color Contrast Checker](#).

Yxy 47.2842, 0.3398, 0.3254

Background



This preview shows how black text looks on a background with the Yxy color 47.2842, 0.3398, 0.3254.



This preview shows how white text looks on a background with the Yxy color 47.2842, 0.3398, 0.3254.

Color Blindness Simulation

Color vision deficiency is a very complex topic, and I could not describe the different causes any better than Wikipedia does, so if you want to learn more, you should check out their [article about color blindness](#).

Dichromacy



Original Color

47.2842, 0.3398, 0.3254

Protanopia

47.2724, 0.3161, 0.3290

Deuteranopia

47.3551, 0.3350, 0.3278



Tritanopia

47.4153, 0.3331, 0.3133

Trichromacy



Original Color

47.2842, 0.3398, 0.3254

Protanomaly

47.0457, 0.3242, 0.3265

Deuteranomaly

47.2442, 0.3369, 0.3266

Tritanomaly

47.2881, 0.3357, 0.3169

Monochromacy



Original Color

47.2842, 0.3398, 0.3254

Achromatopsia

48.5150, 0.3127, 0.3290

Achromatomaly

47.7626, 0.3223, 0.3278

CSS Examples

Text

The CSS property to change the color of the text to Yxy 47.2842, 0.3398, 0.3254 is called "color". The color property can be set on classes, ids or directly on the HTML element.

This example shows how text in the color `rgb(208, 175, 178)` looks like.

```
.text, #text, p{  
    color:rgb(208, 175, 178)  
}
```

If you want to add a text shadow in that color use the text-shadow property, you can generate a text shadow directly with our [CSS Text Shadow Generator](#).

Here you see how black text with a 4 pixel rgb(208, 175, 178) colored shadow looks like.

```
.shadow{ text-shadow: 4px 4px 2px rgb(208, 175, 178) }
```

Border

The CSS property to change the border of an element to Yxy 47.2842, 0.3398, 0.3254 is called "border". The border property can be set on classes, ids or directly on the HTML element.

This example shows the color as border, it can be applied via the CSS property "border" or "border-color".

```
.border, #border, table{ border:4px solid rgb(208, 175, 178) }
```

If only the border color should be changed use the property `border-color`.

```
.border{ border-color:rgb(208, 175, 178) }
```

If you want to add a box shadow in that color use:

Here you see how a box with a 4 pixel `rgb(208, 175, 178)` colored shadow looks like.

```
.boxshadow{ -moz-box-shadow:4px 4px 4px  
4px rgb(208, 175, 178); -webkit-box-  
shadow:4px 4px 4px 4px rgb(208, 175, 178);  
box-shadow:4px 4px 4px 4px rgb(208, 175,  
178) }
```


Background

The CSS property to change the background color of an element to Yxy 47.2842, 0.3398, 0.3254 is called "background". The background property can be set on classes, ids or directly on the HTML element.

```
.background, #background, body{  
background: rgb(208, 175, 178) }
```

If only the background color should be changed can be used:

```
.background{ background-color: rgb(208,  
175, 178) }
```

This example shows the color as background, it is applied via the CSS property "background".

To optimize and compress your CSS code, you can use our [online CSS compressor and optimizer](#) based on csstidy. If you want to create a linear or radial gradient as background or border, check our [CSS Gradient Generator](#).

Hey! You found this booklet interesting? Support Converting Colors with the new Membership Option!

The pro membership hides all ads, plus gives you double the colors in the color bucket, and more awesome pro features!

[Learn more, Memberships starting at \\$2.50/m!](#)

**Follow me
on Twitter!**

@ConvertingColor