

Converting Colors

$Yxy(47.5754, 0.3617, 0.3391)$

Have a look what the booklet for
Yxy(47.5754, 0.3617, 0.3391)
contains.

Yxy(47.5092, 0.3611, 0.3387)	3
<i>Conversions</i>	4
<i>Details</i>	6
<i>Harmonies</i>	12
<i>Previews</i>	24
<i>Color Blindness Simulation</i>	27
<i>CSS Examples</i>	30

Color

Yxy(47.5092, 0.3611, 0.3387)

Conversions

Conversions Part 1

Format	Color
Hex	DAADA5
RGB	218, 173, 165
RGB Percent	85%, 68%, 65%
CMY	0.1451, 0.3216, 0.3528
CMYK	0.00, 0.21, 0.24, 0.15
HSL	9°, 42%, 75%
HSV	9°, 24%, 85%
XYZ	50.6512, 47.5092, 42.1088
YIQ	185.5430, 29.3880, 7.0520

Conversions

Conversions Part 2

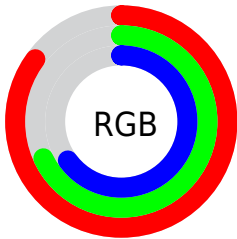
Format	Color
R _Y B	218, 174, 165
Decimal	14331301
CIE Lab	74.51, 15.22, 10.35
CIE LCh	75, 18.407, 34.197
Yxy	47.5092, 0.3611, 0.3387
Android (android.graphics.Color)	4292521381 (0xFFDAADA5)
YUV	185.5430, -10.1277, 28.4648
Hunter-Lab	68.9269, 10.5494, 12.0274

Details

The Yxy color **47.5092, 0.3611, 0.3387** is a light color, and the websafe version is hex **CC9999**. A complement of this color would be **59.1710, 0.2762, 0.3191**, and the grayscale version is **48.8815, 0.3127, 0.3290**.

A 20% lighter version of the original color is **82.4659, 0.3369, 0.3381**, and **22.5484, 0.3749, 0.3420** is the 20% darker color. If you saturate the color by 10%, you get **40.1673, 0.3887, 0.3430**, and if you desaturate by 10%, it is **55.9751, 0.3383, 0.3345**.

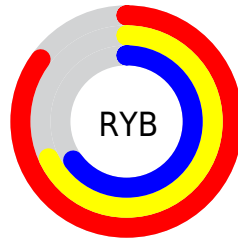
Distribution



Red (85%)

Green (68%)

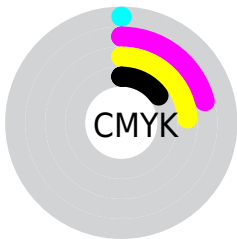
Blue (65%)



Red (85%)

Yellow (68%)

Blue (65%)

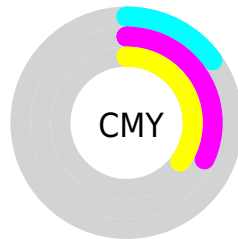


Cyan (0%)

Magenta (21%)

Yellow (24%)

Black (15%)



Cyan (15%)


Magenta (32%)

Yellow (35%)

Brightness & Saturation Gradients

These gradients show how the Yxy color 47.5092, 0.3611, 0.3387 changes by changing the brightness by 10 percent. The first figure shows a shift by +10% for each color and the second figure -10%.


Similar to the brightness gradients but the following saturation gradients show a change of the Yxy color 47.5092, 0.3611, 0.3387 by changing the saturation by 10% instead.


 47.5092, 0.3611,
0.3387


 47.5092, 0.3611,
0.3387


376.8434, 0.3368,
0.3343

 33.4384, 0.3672,
0.3396


 86.4732, 0.3522,
0.3372

 22.4625, 0.3751,
0.3408


 112.1352, 0.3489,
0.3366

 14.1971, 0.3855,
0.3421


142.4296, 0.3461,
0.3361

 8.2579, 0.4001,
0.3437

177.7410, 0.3437,
0.3357

 4.2604, 0.4220,
0.3455

218.4537, 0.3416,
0.3353

 1.8203, 0.4576,
0.3467

264.9520, 0.3398,

 0.4998, 0.6288,

0.3349

0.3712

317.6205, 0.3382,
0.3346

0.0000, 0.0000,
0.0000

47.5092, 0.3611,
0.3387

47.5092, 0.3611,
0.3387

40.1673, 0.3887,
0.3430

55.9751, 0.3383,
0.3345

33.8957, 0.4217,
0.3470

65.6028, 0.3197,
0.3306

28.6461, 0.4600,
0.3503

76.4363, 0.3044,
0.3270

24.3640, 0.5024,
0.3523

88.5153, 0.2918,
0.3237

20.9897, 0.5458,
0.3522

93.6462, 0.2906,
0.3289

■ 18.4566, 0.5852,
0.3493

■ 16.6889, 0.6149,
0.3437

■ 15.9842, 0.6271,
0.3403

Harmonies

Analogous

The Analogous color harmony consists of three colors that are next to each other on the color wheel.



47.5092, 0.3462, 0.3173



47.5092, 0.3611, 0.3387



47.5092, 0.3624, 0.3587

Triad

The Triadic color harmony groups three colors that are evenly spaced from another and form a triangle on the color wheel.



47.5092, 0.3611, 0.3387



47.5092, 0.3019, 0.3618



47.5092, 0.2759, 0.2873

Complementary

The Complementary color scheme is a pair of colors which are on the opposite of each other on the color wheel.



47.5092, 0.3611, 0.3387



59.1710, 0.2762, 0.3191

Split Complementary

Split-complementary colors differ from the complementary color scheme. The scheme consists of three colors, the original color and two neighbors of the complement color.



47.5092, 0.2653, 0.2970



47.5092, 0.3611, 0.3387



47.5092, 0.2798, 0.3402

Square

The Square scheme is like the rectangle color scheme, but the four colors are evenly spaced on the color wheel.



47.5092, 0.3611, 0.3387



47.5092, 0.3275, 0.3735



47.5092, 0.2666, 0.3161



47.5092, 0.2965, 0.2884

Rectangle

The Rectangle color scheme consists of four colors that form a rectangle on the color wheel.



47.5092, 0.3611, 0.3387



47.5092, 0.3554, 0.3686



47.5092, 0.2666, 0.3161



47.5092, 0.2711, 0.2894

Sweetspot

The Sweet Spot groups the original color and five complimentary colors.



47.5114, 0.3611, 0.3387



89.6078, 0.3245, 0.3317



46.4812, 0.3222, 0.2773



18.9965, 0.3255, 0.3319



0.0000, 0.0000, 0.0000



21.4041, 0.3127, 0.3290

Same Dimension

The Same Dimension uses a secret algorithm to generate beautiful new colors.



47.5114, 0.3611, 0.3387



62.3786, 0.3741, 0.3408



58.6833, 0.3539, 0.3693



13.3664, 0.3288, 0.3326



9.6735, 0.6252, 0.3418



0.7286, 0.5976, 0.3637

Inverse Universe

The Inverse Universe completely reimagines the original color for something new.



59.1710, 0.2762, 0.3191



81.6702, 0.2693, 0.3168



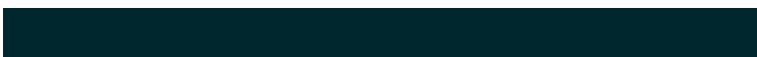
47.1657, 0.2734, 0.2851



14.4780, 0.2982, 0.3254



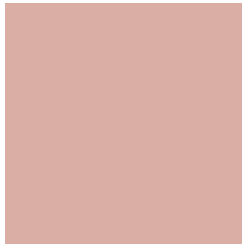
23.9908, 0.2113, 0.2807



1.6468, 0.2137, 0.2893

Previews

White Background



This preview shows how the Yxy color 47.5092, 0.3611, 0.3387 looks on a white background.

Color Contrast Check

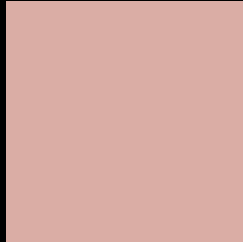
Large Text (above 18pt) WCAG AA × Fail

Any Text WCAG AA × Fail

Large Text (above 18pt) WCAG AAA × Fail

Any Text WCAG AAA × Fail

Black Background



This preview shows how the Yxy color 47.5092, 0.3611, 0.3387 looks on a black background.

Color Contrast Check

Large Text (above 18pt) WCAG AA ✓ Pass

Any Text WCAG AA ✓ Pass

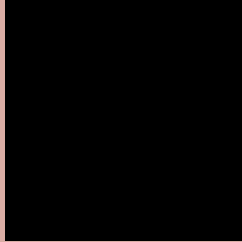
Large Text (above 18pt) WCAG AAA ✓ Pass

Any Text WCAG AAA ✓ Pass

If you want to check with other color combinations, try the [Color Contrast Checker](#).

Yxy 47.5092, 0.3611, 0.3387

Background



This preview shows how black text looks on a background with the Yxy color 47.5092, 0.3611, 0.3387.



This preview shows how white text looks on a background with the Yxy color 47.5092, 0.3611, 0.3387.

Color Blindness Simulation

Color vision deficiency is a very complex topic, and I could not describe the different causes any better than Wikipedia does, so if you want to learn more, you should check out their [article about color blindness](#).

Dichromacy



Original Color

47.5092, 0.3611, 0.3387

Protanopia

47.7164, 0.3292, 0.3458

Deuteranopia

47.5345, 0.3517, 0.3452



Tritanopia

47.3840, 0.3473, 0.3138

Trichromacy



Original Color

47.5092, 0.3611, 0.3387

Protanomaly

47.3467, 0.3405, 0.3429

Deuteranomaly

47.7281, 0.3556, 0.3438

Tritanomaly

47.3205, 0.3525, 0.3232

Monochromacy



Original Color

47.5092, 0.3611, 0.3387

Achromatopsia

49.1021, 0.3127, 0.3290

Achromatomaly

48.2679, 0.3299, 0.3328

CSS Examples

Text

The CSS property to change the color of the text to Yxy 47.5092, 0.3611, 0.3387 is called "color". The color property can be set on classes, ids or directly on the HTML element.

This example shows how text in the color `rgb(218, 173, 165)` looks like.

```
.text, #text, p{  
    color:rgb(218, 173, 165)  
}
```

If you want to add a text shadow in that color use the text-shadow property, you can generate a text shadow directly with our [CSS Text Shadow Generator](#).

Here you see how black text with a 4 pixel rgb(218, 173, 165) colored shadow looks like.

```
.shadow{ text-shadow: 4px 4px 2px rgb(218, 173, 165) }
```

Border

The CSS property to change the border of an element to Yxy 47.5092, 0.3611, 0.3387 is called "border". The border property can be set on classes, ids or directly on the HTML element.

This example shows the color as border, it can be applied via the CSS property "border" or "border-color".

```
.border, #border, table{ border:4px solid rgb(218, 173, 165) }
```

If only the border color should be changed use the property border-color.

```
.border{ border-color:rgb(218, 173, 165) }
```

If you want to add a box shadow in that color use:

Here you see how a box with a 4 pixel rgb(218, 173, 165) colored shadow looks like.

```
.boxshadow{ -moz-box-shadow:4px 4px 4px  
4px rgb(218, 173, 165); -webkit-box-  
shadow:4px 4px 4px 4px rgb(218, 173, 165);  
box-shadow:4px 4px 4px 4px rgb(218, 173,  
165) }
```


Background

The CSS property to change the background color of an element to Yxy 47.5092, 0.3611, 0.3387 is called "background". The background property can be set on classes, ids or directly on the HTML element.

```
.background, #background, body{  
background: rgb(218, 173, 165) }
```

If only the background color should be changed can be used:

```
.background{ background-color: rgb(218,  
173, 165) }
```

This example shows the color as background, it is applied via the CSS property "background".

To optimize and compress your CSS code, you can use our [online CSS compressor and optimizer](#) based on csstidy. If you want to create a linear or radial gradient as background or border, check our [CSS Gradient Generator](#).

Hey! You found this booklet interesting? Support Converting Colors with the new Membership Option!

The pro membership hides all ads, plus gives you double the colors in the color bucket, and more awesome pro features!

[Learn more, Memberships starting at \\$2.50/m!](#)

**Follow me
on Twitter!**

@ConvertingColor