

Converting Colors

$Yxy(47.6996, 0.3535, 0.3472)$

Have a look what the booklet for
Yxy(47.6996, 0.3535, 0.3472)
contains.

Yxy(47.6439, 0.3535, 0.3464)	3
Conversions	4
Details	6
Harmonies	12
Previews	24
Color Blindness Simulation	27
CSS Examples	30

Color

Yxy(47.6439, 0.3535, 0.3464)

Conversions

Conversions Part 1

Format	Color
Hex	D1B1A3
RGB	209, 177, 163
RGB Percent	82%, 69%, 64%
CMY	0.1805, 0.3058, 0.3608
CMYK	0.00, 0.15, 0.22, 0.18
HSL	18°, 33%, 73%
HSV	18°, 22%, 82%
XYZ	48.6204, 47.6439, 41.2758
YIQ	184.9720, 23.5660, 2.4300

Conversions

Conversions Part 2

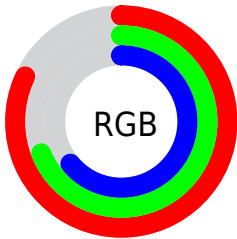
Format	Color
RYB	209, 183, 163
Decimal	13742499
CIELab	74.60, 9.36, 11.46
CIElCh	75, 14.799, 50.747
Yxy	47.6439, 0.3535, 0.3464
Android (android.graphics.Color)	4291932579 (0xFFD1B1A3)
YUV	184.9720, -10.8322, 21.0726
Hunter-Lab	69.0246, 4.9412, 12.8625

Details

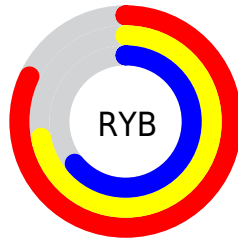
The Yxy color $47.6439, 0.3535, 0.3464$ is a light color, and the websafe version is hex $CC9999$. A complement of this color would be $51.3903, 0.2789, 0.3109$, and the grayscale version is $48.5501, 0.3127, 0.3290$.

A 20% lighter version of the original color is $84.5998, 0.3377, 0.3440$, and $22.4330, 0.3658, 0.3507$ is the 20% darker color. If you saturate the color by 10%, you get $41.5227, 0.3776, 0.3548$, and if you desaturate by 10%, it is $54.5036, 0.3331, 0.3382$.

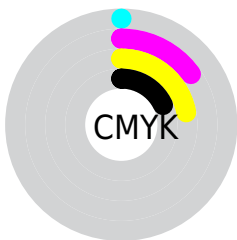
Distribution



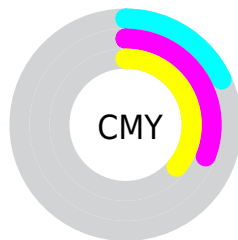
- Red (82%)
- Green (69%)
- Blue (64%)



- Red (82%)
- Yellow (72%)
- Blue (64%)



- Cyan (0%)
- Magenta (15%)
- Yellow (22%)
- Black (18%)





- Cyan (18%)
- Magenta (31%)
- Yellow (36%)

Brightness & Saturation Gradients

These gradients show how the Yxy color 47.6439, 0.3535, 0.3464 changes by changing the brightness by 10 percent. The first figure shows a shift by +10% for each color and the second figure -10%.

Similar to the brightness gradients but the following saturation gradients show a change of the Yxy color 47.6439, 0.3535, 0.3464 by changing the saturation by 10% instead.


 47.6439, 0.3535,
0.3464


 47.6439, 0.3535,
0.3464


377.3789, 0.3330,
0.3380

 33.5450, 0.3586,
0.3484


 86.6740, 0.3461,
0.3434

 22.5443, 0.3652,
0.3508


 112.3739, 0.3433,
0.3423

 14.2574, 0.3740,
0.3540


142.7096, 0.3409,
0.3413

 8.2999, 0.3862,
0.3582

178.0655, 0.3389,
0.3405

 4.2874, 0.4044,
0.3639

218.8260, 0.3371,
0.3398

 1.8356, 0.4341,
0.3718

265.3755, 0.3356,

 0.5092, 0.5832,

0.3391

0.4168

318.0983, 0.3342,
0.3386

0.0000, 0.0000,
0.0000

47.6439, 0.3535,
0.3464

47.6439, 0.3535,
0.3464

41.5227, 0.3776,
0.3548

54.5036, 0.3331,
0.3382

36.1085, 0.4056,
0.3631

62.1192, 0.3158,
0.3305

31.3769, 0.4376,
0.3706

70.5155, 0.3013,
0.3233

27.2995, 0.4729,
0.3764

79.7143, 0.2891,
0.3167

23.8459, 0.5098,
0.3792

88.9071, 0.2852,
0.3234

■ 20.9829, 0.5454,
0.3780

■ 92.2914, 0.2855,
0.3289

■ 18.6736, 0.5763,
0.3720

■ 17.1917, 0.5963,
0.3647

Harmonies

Analogous

The Analogous color harmony consists of three colors that are next to each other on the color wheel.



47.6439, 0.3473, 0.3292



47.6439, 0.3535, 0.3464



47.6439, 0.3483, 0.3598

Triad

The Triadic color harmony groups three colors that are evenly spaced from another and form a triangle on the color wheel.



47.6439, 0.3535, 0.3464



47.6439, 0.2936, 0.3463



47.6439, 0.2915, 0.2946

Complementary

The Complementary color scheme is a pair of colors which are on the opposite of each other on the color wheel.



47.6439, 0.3535, 0.3464



51.3903, 0.2789, 0.3109

Split Complementary

Split-complementary colors differ from the complementary color scheme. The scheme consists of three colors, the original color and two neighbors of the complement color.



47.6439, 0.2780, 0.2979



47.6439, 0.3535, 0.3464



47.6439, 0.2792, 0.3273

Square

The Square scheme is like the rectangle color scheme, but the four colors are evenly spaced on the color wheel.



47.6439, 0.3535, 0.3464



47.6439, 0.3134, 0.3605



47.6439, 0.2736, 0.3096



47.6439, 0.3110, 0.3000

Rectangle

The Rectangle color scheme consists of four colors that form a rectangle on the color wheel.



47.6439, 0.3535, 0.3464



47.6439, 0.3393, 0.3646



47.6439, 0.2736, 0.3096



47.6439, 0.2861, 0.2947

Sweetspot

The Sweet Spot groups the original color and five complimentary colors.



47.6461, 0.3535, 0.3464



91.2432, 0.3242, 0.3343



43.6882, 0.3272, 0.2903



19.3743, 0.3253, 0.3348



0.0000, 0.0000, 0.0000



21.4041, 0.3127, 0.3290

Same Dimension

The Same Dimension uses a secret algorithm to generate beautiful new colors.



47.6461, 0.3535, 0.3464



70.4880, 0.3634, 0.3500



57.3996, 0.3478, 0.3732



12.3881, 0.3283, 0.3362



10.7565, 0.5937, 0.3668



0.7413, 0.5572, 0.3958

Inverse Universe

The Inverse Universe completely reimagines the original color for something new.



51.3903, 0.2789, 0.3109



77.2852, 0.2725, 0.3069



41.9612, 0.2767, 0.2805



12.7728, 0.2983, 0.3217



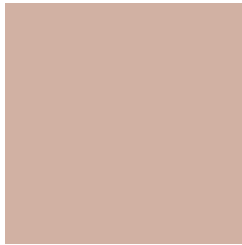
15.5483, 0.1964, 0.2270



1.0059, 0.2022, 0.2480

Previews

White Background



This preview shows how the Yxy color 47.6439, 0.3535, 0.3464 looks on a white background.

Color Contrast Check

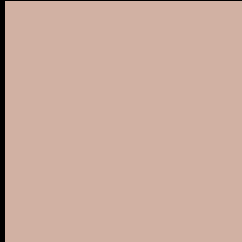
Large Text (above 18pt) WCAG AA × Fail

Any Text WCAG AA × Fail

Large Text (above 18pt) WCAG AAA × Fail

Any Text WCAG AAA × Fail

Black Background



This preview shows how the Yxy color 47.6439, 0.3535, 0.3464 looks on a black background.

Color Contrast Check

Large Text (above 18pt) WCAG AA ✓ Pass

Any Text WCAG AA ✓ Pass

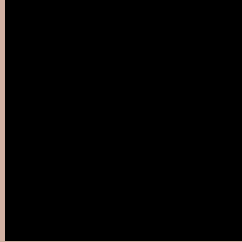
Large Text (above 18pt) WCAG AAA ✓ Pass

Any Text WCAG AAA ✓ Pass

If you want to check with other color combinations, try the [Color Contrast Checker](#).

Yxy 47.6439, 0.3535, 0.3464

Background



This preview shows how black text looks on a background with the Yxy color 47.6439, 0.3535, 0.3464.



This preview shows how white text looks on a background with the Yxy color 47.6439, 0.3535, 0.3464.

Color Blindness Simulation

Color vision deficiency is a very complex topic, and I could not describe the different causes any better than Wikipedia does, so if you want to learn more, you should check out their [article about color blindness](#).

Dichromacy



Original Color

47.6439, 0.3535, 0.3464

Protanopia

47.6965, 0.3334, 0.3510

Deuteranopia

47.6439, 0.3535, 0.3464



Tritanopia

47.4720, 0.3359, 0.3123

Trichromacy



Original Color

47.6439, 0.3535, 0.3464

Protanomaly

47.7701, 0.3408, 0.3494

Deuteranomaly

47.6439, 0.3535, 0.3464

Tritanomaly

47.3353, 0.3427, 0.3242

Monochromacy



Original Color

47.6439, 0.3535, 0.3464

Achromatopsia

48.5150, 0.3127, 0.3290

Achromatomaly

48.0996, 0.3271, 0.3354

CSS Examples

Text

The CSS property to change the color of the text to Yxy 47.6439, 0.3535, 0.3464 is called "color". The color property can be set on classes, ids or directly on the HTML element.

This example shows how text in the color `rgb(209, 177, 163)` looks like.

```
.text, #text, p{  
    color:rgb(209, 177, 163)  
}
```

If you want to add a text shadow in that color use the text-shadow property, you can generate a text shadow directly with our [CSS Text Shadow Generator](#).

Here you see how black text with a 4 pixel rgb(209, 177, 163) colored shadow looks like.

```
.shadow{ text-shadow: 4px 4px 2px rgb(209, 177, 163) }
```

Border

The CSS property to change the border of an element to Yxy 47.6439, 0.3535, 0.3464 is called "border". The border property can be set on classes, ids or directly on the HTML element.

This example shows the color as border, it can be applied via the CSS property "border" or "border-color".

```
.border, #border, table{ border:4px solid rgb(209, 177, 163) }
```

If only the border color should be changed use the property `border-color`.

```
.border{ border-color:rgb(209, 177, 163) }
```

If you want to add a box shadow in that color use:

Here you see how a box with a 4 pixel `rgb(209, 177, 163)` colored shadow looks like.

```
.boxshadow{ -moz-box-shadow:4px 4px 4px  
4px rgb(209, 177, 163); -webkit-box-  
shadow:4px 4px 4px 4px rgb(209, 177, 163);  
box-shadow:4px 4px 4px 4px rgb(209, 177,  
163) }
```


Background

The CSS property to change the background color of an element to Yxy 47.6439, 0.3535, 0.3464 is called "background". The background property can be set on classes, ids or directly on the HTML element.

```
.background, #background, body{  
background: rgb(209, 177, 163) }
```

If only the background color should be changed can be used:

```
.background{ background-color: rgb(209,  
177, 163) }
```

This example shows the color as background, it is applied via the CSS property "background".

To optimize and compress your CSS code, you can use our [online CSS compressor and optimizer](#) based on csstidy. If you want to create a linear or radial gradient as background or border, check our [CSS Gradient Generator](#).

Hey! You found this booklet interesting? Support Converting Colors with the new Membership Option!

The pro membership hides all ads, plus gives you double the colors in the color bucket, and more awesome pro features!

[Learn more, Memberships starting at \\$2.50/m!](#)

**Follow me
on Twitter!**

@ConvertingColor