

Converting Colors

$Yxy(47.7342, 0.3517, 0.3436)$

Have a look what the booklet for
Yxy(47.7342, 0.3517, 0.3436)
contains.

Yxy(47.7162, 0.3517, 0.3439)	3
Conversions	4
Details	6
Harmonies	12
Previews	24
Color Blindness Simulation	27
CSS Examples	30

Color

Yxy(47.7162, 0.3517, 0.3439)

Conversions

Conversions Part 1

Format	Color
Hex	D1B1A5
RGB	209, 177, 165
RGB Percent	82%, 69%, 65%
CMY	0.1806, 0.3058, 0.3529
CMYK	0.00, 0.15, 0.21, 0.18
HSL	16°, 32%, 73%
HSV	16°, 21%, 82%
XYZ	48.7985, 47.7162, 42.2356
YIQ	185.2000, 22.9240, 3.0520

Conversions

Conversions Part 2

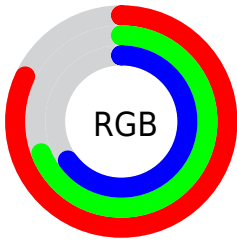
Format	Color
R _Y B	209, 182, 165
Decimal	13742501
CIE Lab	74.65, 9.65, 10.43
CIE LCh	75, 14.209, 47.200
Yxy	47.7162, 0.3517, 0.3439
Android (android.graphics.Color)	4291932581 (0xFFD1B1A5)
YUV	185.2000, -9.9586, 20.8726
Hunter-Lab	69.0769, 5.2143, 12.1023

Details

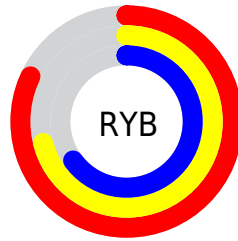
The Yxy color $47.7162, 0.3517, 0.3439$ is a light color, and the websafe version is hex $CC9999$. A complement of this color would be $52.5030, 0.2806, 0.3136$, and the grayscale version is $48.6787, 0.3127, 0.3290$.

A 20% lighter version of the original color is $84.7051, 0.3363, 0.3420$, and $22.4776, 0.3634, 0.3473$ is the 20% darker color. If you saturate the color by 10%, you get $41.3504, 0.3758, 0.3515$, and if you desaturate by 10%, it is $54.8779, 0.3314, 0.3366$.

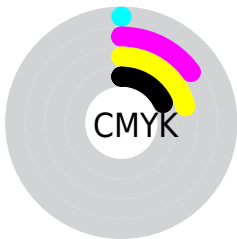
Distribution



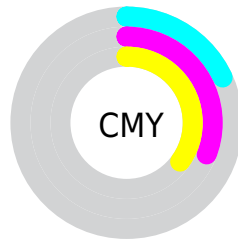
- Red (82%)
- Green (69%)
- Blue (65%)



- Red (82%)
- Yellow (71%)
- Blue (65%)



- Cyan (0%)
- Magenta (15%)
- Yellow (21%)
- Black (18%)





- Cyan (18%)
- Magenta (31%)
- Yellow (35%)

Brightness & Saturation Gradients

These gradients show how the Yxy color 47.7162, 0.3517, 0.3439 changes by changing the brightness by 10 percent. The first figure shows a shift by +10% for each color and the second figure -10%.


Similar to the brightness gradients but the following saturation gradients show a change of the Yxy color 47.7162, 0.3517, 0.3439 by changing the saturation by 10% instead.


 47.7162, 0.3517,
0.3439


 47.7162, 0.3517,
0.3439


377.6661, 0.3321,
0.3368

 33.6022, 0.3566,
0.3456


 86.7817, 0.3446,
0.3414

 22.5882, 0.3629,
0.3477


 112.5020, 0.3419,
0.3404

 14.2897, 0.3713,
0.3504


142.8598, 0.3397,
0.3396

 8.3224, 0.3830,
0.3539

178.2396, 0.3377,
0.3389

 4.3020, 0.4004,
0.3587

219.0257, 0.3360,
0.3382

 1.8439, 0.4290,
0.3653

265.6026, 0.3346,

 0.5143, 0.5848,

0.3377

0.4152

318.3546, 0.3333,
0.3372

0.0000, 0.0000,
0.0000

47.7162, 0.3517,
0.3439

47.7162, 0.3517,
0.3439

41.3504, 0.3758,
0.3515

54.8779, 0.3314,
0.3366

35.7461, 0.4042,
0.3590

62.8552, 0.3143,
0.3297

30.8761, 0.4368,
0.3657

71.6755, 0.3000,
0.3233

26.7090, 0.4731,
0.3710

81.3628, 0.2880,
0.3175

23.2109, 0.5114,
0.3735

90.9722, 0.2853,
0.3268

■ 20.3450, 0.5486,
0.3723

■ 92.2886, 0.2854,
0.3289

■ 18.0704, 0.5810,
0.3666

■ 16.4895, 0.6038,
0.3588

Harmonies

Analogous

The Analogous color harmony consists of three colors that are next to each other on the color wheel.



47.7162, 0.3445, 0.3272



47.7162, 0.3517, 0.3439



47.7162, 0.3480, 0.3574

Triad

The Triadic color harmony groups three colors that are evenly spaced from another and form a triangle on the color wheel.



47.7162, 0.3517, 0.3439



47.7162, 0.2964, 0.3476



47.7162, 0.2904, 0.2959

Complementary

The Complementary color scheme is a pair of colors which are on the opposite of each other on the color wheel.



47.7162, 0.3517, 0.3439



52.5030, 0.2806, 0.3136

Split Complementary

Split-complementary colors differ from the complementary color scheme. The scheme consists of three colors, the original color and two neighbors of the complement color.



47.7162, 0.2784, 0.3001



47.7162, 0.3517, 0.3439



47.7162, 0.2818, 0.3296

Square

The Square scheme is like the rectangle color scheme, but the four colors are evenly spaced on the color wheel.



47.7162, 0.3517, 0.3439



47.7162, 0.3157, 0.3603



47.7162, 0.2753, 0.3122



47.7162, 0.3087, 0.3001

Rectangle

The Rectangle color scheme consists of four colors that form a rectangle on the color wheel.



47.7162, 0.3517, 0.3439



47.7162, 0.3400, 0.3626



47.7162, 0.2753, 0.3122



47.7162, 0.2855, 0.2964

Sweetspot

The Sweet Spot groups the original color and five complimentary colors.



47.7184, 0.3517, 0.3439



92.1653, 0.3225, 0.3331



44.5014, 0.3252, 0.2903



19.5508, 0.3237, 0.3335



0.0000, 0.0000, 0.0000



21.4041, 0.3127, 0.3290

Same Dimension

The Same Dimension uses a secret algorithm to generate beautiful new colors.



47.7184, 0.3517, 0.3439



70.4792, 0.3615, 0.3471



56.9736, 0.3465, 0.3695



12.3269, 0.3284, 0.3354



10.3140, 0.6013, 0.3608



0.7103, 0.5645, 0.3900

Inverse Universe

The Inverse Universe completely reimagines the original color for something new.



52.5030, 0.2806, 0.3136



79.2248, 0.2742, 0.3101



43.3608, 0.2786, 0.2849



12.8374, 0.2983, 0.3225



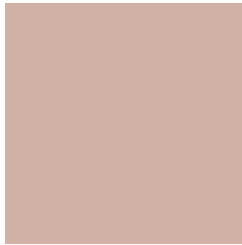
16.8241, 0.1995, 0.2383



1.0692, 0.2047, 0.2569

Previews

White Background



This preview shows how the Yxy color 47.7162, 0.3517, 0.3439 looks on a white background.

Color Contrast Check

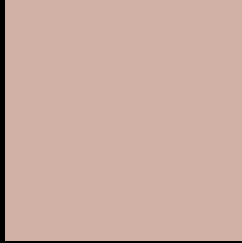
Large Text (above 18pt) WCAG AA × Fail

Any Text WCAG AA × Fail

Large Text (above 18pt) WCAG AAA × Fail

Any Text WCAG AAA × Fail

Black Background



This preview shows how the Yxy color 47.7162, 0.3517, 0.3439 looks on a black background.

Color Contrast Check

Large Text (above 18pt) WCAG AA ✓ Pass

Any Text WCAG AA ✓ Pass

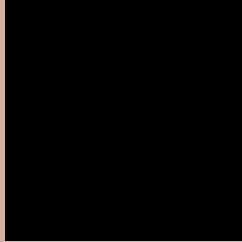
Large Text (above 18pt) WCAG AAA ✓ Pass

Any Text WCAG AAA ✓ Pass

If you want to check with other color combinations, try the [Color Contrast Checker](#).

Yxy 47.7162, 0.3517, 0.3439

Background



This preview shows how black text looks on a background with the Yxy color 47.7162, 0.3517, 0.3439.



This preview shows how white text looks on a background with the Yxy color 47.7162, 0.3517, 0.3439.

Color Blindness Simulation

Color vision deficiency is a very complex topic, and I could not describe the different causes any better than Wikipedia does, so if you want to learn more, you should check out their [article about color blindness](#).

Dichromacy



Original Color

47.7162, 0.3517, 0.3439

Protanopia

47.7705, 0.3317, 0.3484

Deuteranopia

47.5708, 0.3508, 0.3439



Tritanopia

47.8570, 0.3358, 0.3135

Trichromacy



Original Color

47.7162, 0.3517, 0.3439

Protanomaly

47.8435, 0.3391, 0.3468

Deuteranomaly

47.5708, 0.3508, 0.3439

Tritanomaly

47.7635, 0.3417, 0.3242

Monochromacy



Original Color

47.7162, 0.3517, 0.3439

Achromatopsia

48.5150, 0.3127, 0.3290

Achromatomaly

48.1396, 0.3263, 0.3341

CSS Examples

Text

The CSS property to change the color of the text to Yxy 47.7162, 0.3517, 0.3439 is called "color". The color property can be set on classes, ids or directly on the HTML element.

This example shows how text in the color `rgb(209, 177, 165)` looks like.

```
.text, #text, p{  
    color:rgb(209, 177, 165)  
}
```

If you want to add a text shadow in that color use the text-shadow property, you can generate a text shadow directly with our [CSS Text Shadow Generator](#).

Here you see how black text with a 4 pixel rgb(209, 177, 165) colored shadow looks like.

```
.shadow{ text-shadow: 4px 4px 2px rgb(209, 177, 165) }
```

Border

The CSS property to change the border of an element to Yxy 47.7162, 0.3517, 0.3439 is called "border". The border property can be set on classes, ids or directly on the HTML element.

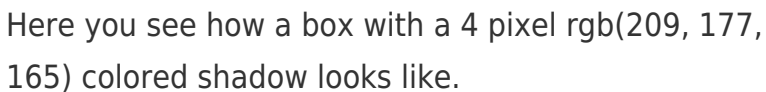
This example shows the color as border, it can be applied via the CSS property "border" or "border-color".

```
.border, #border, table{ border:4px solid rgb(209, 177, 165) }
```

If only the border color should be changed use the property `border-color`.

```
.border{ border-color:rgb(209, 177, 165) }
```

If you want to add a box shadow in that color use:



Here you see how a box with a 4 pixel `rgb(209, 177, 165)` colored shadow looks like.

```
.boxshadow{ -moz-box-shadow:4px 4px 4px 4px rgb(209, 177, 165); -webkit-box-shadow:4px 4px 4px 4px rgb(209, 177, 165); box-shadow:4px 4px 4px 4px rgb(209, 177, 165) }
```


Background

The CSS property to change the background color of an element to Yxy 47.7162, 0.3517, 0.3439 is called "background". The background property can be set on classes, ids or directly on the HTML element.

```
.background, #background, body{  
background: rgb(209, 177, 165) }
```

If only the background color should be changed can be used:

```
.background{ background-color: rgb(209,  
177, 165) }
```

This example shows the color as background, it is applied via the CSS property "background".

To optimize and compress your CSS code, you can use our [online CSS compressor and optimizer](#) based on csstidy. If you want to create a linear or radial gradient as background or border, check our [CSS Gradient Generator](#).

Hey! You found this booklet interesting? Support Converting Colors with the new Membership Option!

The pro membership hides all ads, plus gives you double the colors in the color bucket, and more awesome pro features!

[Learn more, Memberships starting at \\$2.50/m!](#)

**Follow me
on Twitter!**

@ConvertingColor