

Converting Colors

$Yxy(47.7395, 0.3399, 0.3232)$

Have a look what the booklet for
Yxy(47.7395, 0.3399, 0.3232)
contains.

Yxy(47.6569, 0.3399, 0.3230)	3
Conversions	4
Details	6
Harmonies	12
Previews	24
Color Blindness Simulation	27
CSS Examples	30

Color

Yxy(47.6569, 0.3399, 0.3230)

Conversions

Conversions Part 1

Format	Color
Hex	D2AFB4
RGB	210, 175, 180
RGB Percent	82%, 69%, 71%
CMY	0.1764, 0.3137, 0.2941
CMYK	0.00, 0.17, 0.14, 0.18
HSL	351°, 28%, 75%
HSV	351°, 17%, 82%
XYZ	50.1504, 47.6569, 49.7373
YIQ	186.0350, 19.2550, 8.9750

Conversions

Conversions Part 2

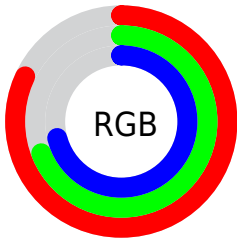
Format	Color
R _Y B	210, 175, 180
Decimal	13807540
CIE Lab	74.61, 13.48, 2.19
CIE LCh	75, 13.657, 9.233
Yxy	47.6569, 0.3399, 0.3230
Android (android.graphics.Color)	4291997620 (0xFFD2AFB4)
YUV	186.0350, -2.9753, 21.0173
Hunter-Lab	69.0340, 8.8636, 5.6068

Details

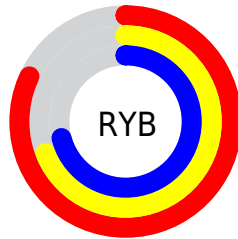
The Yxy color $47.6569, 0.3399, 0.3230$ is a light color, and the websafe version is hex $CC9999$. A complement of this color would be $59.6241, 0.2909, 0.3351$, and the grayscale version is $49.1344, 0.3127, 0.3290$.

A 20% lighter version of the original color is $84.4680, 0.3260, 0.3241$, and $22.4199, 0.3480, 0.3210$ is the 20% darker color. If you saturate the color by 10%, you get $39.4231, 0.3616, 0.3192$, and if you desaturate by 10%, it is $57.2616, 0.3224, 0.3267$.

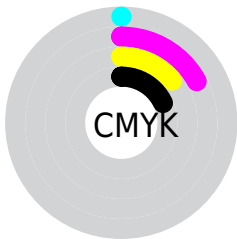
Distribution



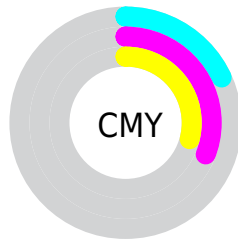
- Red (82%)
- Green (69%)
- Blue (71%)



- Red (82%)
- Yellow (69%)
- Blue (71%)



- Cyan (0%)
- Magenta (17%)
- Yellow (14%)
- Black (18%)




- Cyan (18%)
- Magenta (31%)
- Yellow (29%)

Brightness & Saturation Gradients


These gradients show how the Yxy color 47.6569, 0.3399, 0.3230 changes by changing the brightness by 10 percent. The first figure shows a shift by +10% for each color and the second figure -10%.


Similar to the brightness gradients but the following saturation gradients show a change of the Yxy color 47.6569, 0.3399, 0.3230 by changing the saturation by 10% instead.


 47.6569, 0.3399,
0.3230

 47.6569, 0.3399,
0.3230


377.4305, 0.3263,
0.3261

 33.5553, 0.3433,
0.3222


 86.6933, 0.3350,
0.3241

 22.5521, 0.3477,
0.3212


112.3969, 0.3331,
0.3246

 14.2632, 0.3535,
0.3198


142.7366, 0.3315,
0.3249

 8.3039, 0.3616,
0.3178

178.0968, 0.3302,
0.3252

 4.2900, 0.3737,
0.3147

218.8619, 0.3290,
0.3255

 1.8371, 0.3938,
0.3095

265.4163, 0.3280,

 0.5101, 0.4715,

0.3257

0.2955

318.1444, 0.3271,
0.3259

0.0000, 0.0000,
0.0000

47.6569, 0.3399,
0.3230

47.6569, 0.3399,
0.3230

39.4231, 0.3616,
0.3192

57.2616, 0.3224,
0.3267

32.4917, 0.3882,
0.3153

68.2890, 0.3084,
0.3301

26.7976, 0.4205,
0.3118

80.7962, 0.2970,
0.3332

22.2678, 0.4585,
0.3091

92.2527, 0.2876,
0.3320

18.8216, 0.5008,
0.3079

92.4442, 0.2860,
0.3289

■ 16.3678, 0.5445,
0.3089

■ 14.8005, 0.5842,
0.3125

■ 13.9833, 0.6144,
0.3185

■ 13.7981, 0.6223,
0.3202

Harmonies

Analogous

The Analogous color harmony consists of three colors that are next to each other on the color wheel.



47.6569, 0.3231, 0.3086



47.6569, 0.3399, 0.3230



47.6569, 0.3493, 0.3392

Triad

The Triadic color harmony groups three colors that are evenly spaced from another and form a triangle on the color wheel.



47.6569, 0.3399, 0.3230



47.6569, 0.3207, 0.3609



47.6569, 0.2780, 0.3036

Complementary

The Complementary color scheme is a pair of colors which are on the opposite of each other on the color wheel.



47.6569, 0.3399, 0.3230



59.6241, 0.2909, 0.3351

Split Complementary

Split-complementary colors differ from the complementary color scheme. The scheme consists of three colors, the original color and two neighbors of the complement color.



47.6569, 0.2774, 0.3170



47.6569, 0.3399, 0.3230



47.6569, 0.3017, 0.3508

Square

The Square scheme is like the rectangle color scheme, but the four colors are evenly spaced on the color wheel.



47.6569, 0.3399, 0.3230



47.6569, 0.3380, 0.3616



47.6569, 0.2860, 0.3344



47.6569, 0.2875, 0.2974

Rectangle

The Rectangle color scheme consists of four colors that form a rectangle on the color wheel.



47.6569, 0.3399, 0.3230



47.6569, 0.3500, 0.3492



47.6569, 0.2860, 0.3344



47.6569, 0.2767, 0.3074

Sweetspot

The Sweet Spot groups the original color and five complimentary colors.



47.6590, 0.3399, 0.3230



91.4493, 0.3199, 0.3273



48.2591, 0.3102, 0.2874



19.3265, 0.3210, 0.3270



0.0000, 0.0000, 0.0000



21.4041, 0.3127, 0.3290

Same Dimension

The Same Dimension uses a secret algorithm to generate beautiful new colors.



47.6590, 0.3399, 0.3230



69.1635, 0.3471, 0.3217



52.4483, 0.3419, 0.3439



11.8354, 0.3268, 0.3257



8.4240, 0.6196, 0.3187



0.4801, 0.5760, 0.2947

Inverse Universe

The Inverse Universe completely reimagines the original color for something new.



47.6590, 0.3399, 0.3230



69.1635, 0.3471, 0.3217



54.0468, 0.2870, 0.3137



11.8354, 0.3268, 0.3257



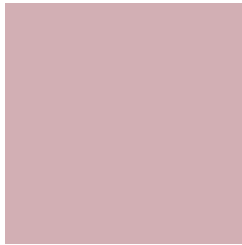
8.4240, 0.6196, 0.3187



0.4801, 0.5760, 0.2947

Previews

White Background



This preview shows how the Yxy color 47.6569, 0.3399, 0.3230 looks on a white background.

Color Contrast Check

Large Text (above 18pt) WCAG AA × Fail

Any Text WCAG AA × Fail

Large Text (above 18pt) WCAG AAA × Fail

Any Text WCAG AAA × Fail

Black Background



This preview shows how the Yxy color 47.6569, 0.3399, 0.3230 looks on a black background.

Color Contrast Check

Large Text (above 18pt) WCAG AA ✓ Pass

Any Text WCAG AA ✓ Pass

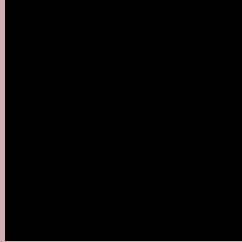
Large Text (above 18pt) WCAG AAA ✓ Pass

Any Text WCAG AAA ✓ Pass

If you want to check with other color combinations, try the [Color Contrast Checker](#).

Yxy 47.6569, 0.3399, 0.3230

Background



This preview shows how black text looks on a background with the Yxy color 47.6569, 0.3399, 0.3230.



This preview shows how white text looks on a background with the Yxy color 47.6569, 0.3399, 0.3230.

Color Blindness Simulation

Color vision deficiency is a very complex topic, and I could not describe the different causes any better than Wikipedia does, so if you want to learn more, you should check out their [article about color blindness](#).

Dichromacy



Original Color

47.6569, 0.3399, 0.3230

Protanopia

47.8925, 0.3153, 0.3277

Deuteranopia

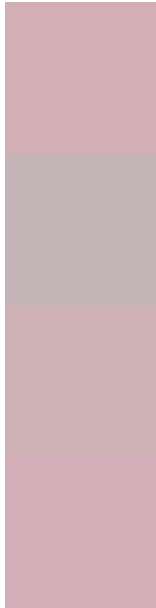
47.7920, 0.3340, 0.3278



Tritanopia

47.7088, 0.3349, 0.3134

Trichromacy



Original Color

47.6569, 0.3399, 0.3230

Protanomaly

47.6635, 0.3233, 0.3253

Deuteranomaly

47.8208, 0.3368, 0.3266

Tritanomaly

47.5817, 0.3375, 0.3170

Monochromacy



Original Color

47.6569, 0.3399, 0.3230

Achromatopsia

49.1021, 0.3127, 0.3290

Achromatomaly

48.5187, 0.3223, 0.3265

CSS Examples

Text

The CSS property to change the color of the text to Yxy 47.6569, 0.3399, 0.3230 is called "color". The color property can be set on classes, ids or directly on the HTML element.

This example shows how text in the color `rgb(210, 175, 180)` looks like.

```
.text, #text, p{  
    color:rgb(210, 175, 180)  
}
```

If you want to add a text shadow in that color use the text-shadow property, you can generate a text shadow directly with our [CSS Text Shadow Generator](#).

Here you see how black text with a 4 pixel rgb(210, 175, 180) colored shadow looks like.

```
.shadow{ text-shadow: 4px 4px 2px rgb(210, 175, 180) }
```

Border

The CSS property to change the border of an element to Yxy 47.6569, 0.3399, 0.3230 is called "border". The border property can be set on classes, ids or directly on the HTML element.

This example shows the color as border, it can be applied via the CSS property "border" or "border-color".

```
.border, #border, table{ border:4px solid rgb(210, 175, 180) }
```

If only the border color should be changed use the property `border-color`.

```
.border{ border-color:rgb(210, 175, 180) }
```

If you want to add a box shadow in that color use:

Here you see how a box with a 4 pixel `rgb(210, 175, 180)` colored shadow looks like.

```
.boxshadow{ -moz-box-shadow:4px 4px 4px  
4px rgb(210, 175, 180); -webkit-box-  
shadow:4px 4px 4px 4px rgb(210, 175, 180);  
box-shadow:4px 4px 4px 4px rgb(210, 175,  
180) }
```


Background

The CSS property to change the background color of an element to Yxy 47.6569, 0.3399, 0.3230 is called "background". The background property can be set on classes, ids or directly on the HTML element.

```
.background, #background, body{  
background: rgb(210, 175, 180) }
```

If only the background color should be changed can be used:

```
.background{ background-color: rgb(210,  
175, 180) }
```

This example shows the color as background, it is applied via the CSS property "background".

To optimize and compress your CSS code, you can use our [online CSS compressor and optimizer](#) based on csstidy. If you want to create a linear or radial gradient as background or border, check our [CSS Gradient Generator](#).

Hey! You found this booklet interesting? Support Converting Colors with the new Membership Option!

The pro membership hides all ads, plus gives you double the colors in the color bucket, and more awesome pro features!

[Learn more, Memberships starting at \\$2.50/m!](#)

**Follow me
on Twitter!**

@ConvertingColor