

# Converting Colors

$Y_{xy}(47.7590, 0.3287, 0.3265)$

Have a look what the booklet for  
Yxy(47.7590, 0.3287, 0.3265)  
contains.

<b>Yxy(47.7185, 0.3286, 0.3266)</b> .....	3
<b><i>Conversions</i></b> .....	4
<b><i>Details</i></b> .....	6
<b><i>Harmonies</i></b> .....	12
<b><i>Previews</i></b> .....	24
<b><i>Color Blindness Simulation</i></b> .....	27
<b><i>CSS Examples</i></b> .....	30

# Color

**Yxy(47.7185, 0.3286, 0.3266)**

# Conversions

## Conversions Part 1

<b>Format</b>	<b>Color</b>
Hex	C7B3B5
RGB	199, 179, 181
RGB Percent	78%, 70%, 71%
CMY	0.2196, 0.2980, 0.2903
CMYK	0.00, 0.10, 0.09, 0.22
HSL	354°, 15%, 74%
HSV	354°, 10%, 78%
XYZ	48.0107, 47.7185, 50.3776
YIQ	185.2080, 11.2780, 4.8620

# Conversions

## Conversions Part 2

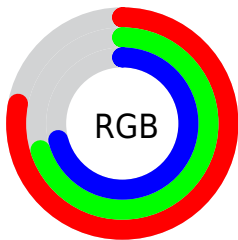
Format	Color
R <sub>Y</sub> B	199, 179, 181
Decimal	13087669
CIE Lab	74.65, 7.48, 1.60
CIE LCh	75, 7.651, 12.073
Yxy	47.7185, 0.3286, 0.3266
Android (android.graphics.Color)	4291277749 (0xFFC7B3B5)
YUV	185.2080, -2.0745, 12.0956
Hunter-Lab	69.0786, 3.1728, 5.1160

# Details

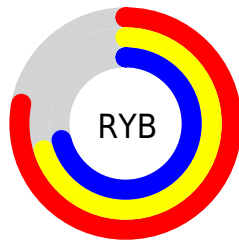
The Yxy color  $47.7185, 0.3286, 0.3266$  is a light color, and the websafe version is hex `CCCCCC`. A complement of this color would be  $54.4646, 0.2988, 0.3314$ , and the grayscale version is  $48.6446, 0.3127, 0.3290$ .

A 20% lighter version of the original color is  $86.7911, 0.3250, 0.3271$ , and  $22.5000, 0.3334, 0.3257$  is the 20% darker color. If you saturate the color by 10%, you get  $39.6207, 0.3483, 0.3241$ , and if you desaturate by 10%, it is  $57.0666, 0.3128, 0.3290$ .

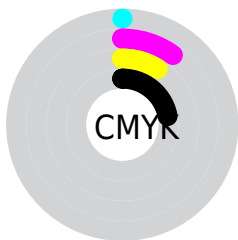
# Distribution



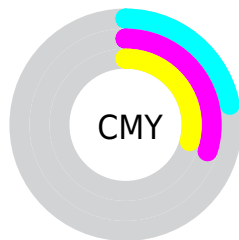
- Red (78%)
- Green (70%)
- Blue (71%)



- Red (78%)
- Yellow (70%)
- Blue (71%)



- Cyan (0%)
- Magenta (10%)
- Yellow (9%)
- Black (22%)




- Cyan (22%)
- Magenta (30%)
- Yellow (29%)

# Brightness & Saturation Gradients

These gradients show how the Yxy color 47.7185, 0.3286, 0.3266 changes by changing the brightness by 10 percent. The first figure shows a shift by +10% for each color and the second figure -10%.

Similar to the brightness gradients but the following saturation gradients show a change of the Yxy color 47.7185, 0.3286, 0.3266 by changing the saturation by 10% instead.




 47.7185, 0.3286,  
0.3266

 47.7185, 0.3286,  
0.3266

377.6752, 0.3207,  
0.3278

 33.6040, 0.3306,  
0.3263


 86.7851, 0.3257,  
0.3271

 22.5896, 0.3331,  
0.3259


112.5061, 0.3246,  
0.3272

 14.2907, 0.3365,  
0.3253


142.8646, 0.3237,  
0.3274

 8.3232, 0.3412,  
0.3245

178.2452, 0.3229,  
0.3275

 4.3024, 0.3483,  
0.3233

219.0321, 0.3223,  
0.3276

 1.8441, 0.3601,  
0.3211

265.6098, 0.3217,

 0.5145, 0.4109,

0.3277

0.3148

318.3627, 0.3211,  
0.3278

0.0000, 0.0000,  
0.0000

47.7185, 0.3286,  
0.3266

47.7185, 0.3286,  
0.3266

39.6207, 0.3483,  
0.3241

57.0666, 0.3128,  
0.3290

32.7142, 0.3727,  
0.3214

67.7082, 0.3000,  
0.3312

26.9446, 0.4027,  
0.3189

79.6923, 0.2897,  
0.3332

22.2511, 0.4387,  
0.3167

90.7393, 0.2811,  
0.3312

18.5667, 0.4803,  
0.3153

90.8821, 0.2800,  
0.3289

■ 15.8175, 0.5252,  
0.3152

■ 13.9189, 0.5689,  
0.3168

■ 12.7715, 0.6052,  
0.3202

■ 12.1908, 0.6295,  
0.3241

# Harmonies

## Analogous

The Analogous color harmony consists of three colors that are next to each other on the color wheel.



47.7185, 0.3196, 0.3181



47.7185, 0.3286, 0.3266



47.7185, 0.3333, 0.3358

# Triad

The Triadic color harmony groups three colors that are evenly spaced from another and form a triangle on the color wheel.



47.7185, 0.3286, 0.3266



47.7185, 0.3163, 0.3463



47.7185, 0.2934, 0.3143

# Complementary

The Complementary color scheme is a pair of colors which are on the opposite of each other on the color wheel.



47.7185, 0.3286, 0.3266



54.4646, 0.2988, 0.3314

# Split Complementary

Split-complementary colors differ from the complementary color scheme. The scheme consists of three colors, the original color and two neighbors of the complement color.



47.7185, 0.2926, 0.3216



47.7185, 0.3286, 0.3266



47.7185, 0.3057, 0.3403

# Square

The Square scheme is like the rectangle color scheme, but the four colors are evenly spaced on the color wheel.



47.7185, 0.3286, 0.3266



47.7185, 0.3261, 0.3474



47.7185, 0.2970, 0.3312



47.7185, 0.2993, 0.3110



# Rectangle

The Rectangle color scheme consists of four colors that form a rectangle on the color wheel.



47.7185, 0.3286, 0.3266



47.7185, 0.3334, 0.3412



47.7185, 0.2970, 0.3312



47.7185, 0.2925, 0.3164

# Sweetspot

The Sweet Spot groups the original color and five complimentary colors.



47.7206, 0.3286, 0.3266



94.7793, 0.3172, 0.3283



48.2376, 0.3122, 0.3045



19.9956, 0.3184, 0.3281



0.0000, 0.0000, 0.0000



21.4041, 0.3127, 0.3290

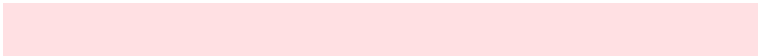


# Same Dimension

The Same Dimension uses a secret algorithm to generate beautiful new colors.



47.7206, 0.3286, 0.3266



80.3546, 0.3324, 0.3261



50.9399, 0.3291, 0.3390



10.6535, 0.3274, 0.3268



7.8450, 0.6275, 0.3230



0.3774, 0.5899, 0.3023



# Inverse Universe

The Inverse Universe completely reimagines the original color for something new.



47.7206, 0.3286, 0.3266



80.3546, 0.3324, 0.3261



50.9713, 0.2973, 0.3188



10.6535, 0.3274, 0.3268



7.8450, 0.6275, 0.3230

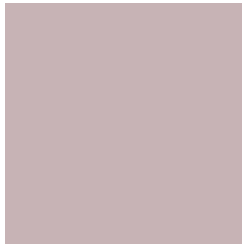


0.3774, 0.5899, 0.3023



# Previews

## White Background



This preview shows how the Yxy color 47.7185, 0.3286, 0.3266 looks on a white background.

## Color Contrast Check

Large Text (above 18pt) WCAG AA × Fail

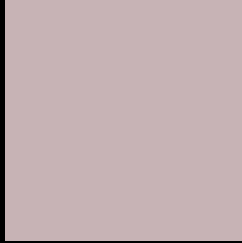
Any Text WCAG AA × Fail

Large Text (above 18pt) WCAG AAA × Fail

Any Text WCAG AAA × Fail



# Black Background



This preview shows how the Yxy color 47.7185, 0.3286, 0.3266 looks on a black background.

## Color Contrast Check

Large Text (above 18pt) WCAG AA ✓ Pass

Any Text WCAG AA ✓ Pass

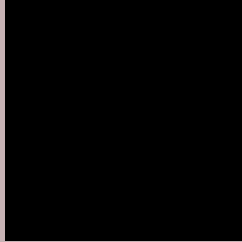
Large Text (above 18pt) WCAG AAA ✓ Pass

Any Text WCAG AAA ✓ Pass

If you want to check with other color combinations, try the [Color Contrast Checker](#).

**Yxy 47.7185, 0.3286, 0.3266**

## Background



This preview shows how black text looks on a background with the Yxy color 47.7185, 0.3286, 0.3266.



This preview shows how white text looks on a background with the Yxy color 47.7185, 0.3286, 0.3266.

# Color Blindness Simulation

Color vision deficiency is a very complex topic, and I could not describe the different causes any better than Wikipedia does, so if you want to learn more, you should check out their [article about color blindness](#).

## Dichromacy



### Original Color

47.7185, 0.3286, 0.3266

### Protanopia

47.8507, 0.3161, 0.3290

### Deuteranopia

47.7335, 0.3314, 0.3253



## Tritanopia

47.4852, 0.3214, 0.3118

# Trichromacy



## Original Color

47.7185, 0.3286, 0.3266

## Protanomaly

47.9097, 0.3204, 0.3290

## Deuteranomaly

47.5945, 0.3305, 0.3253

## Tritanomaly

47.7080, 0.3246, 0.3179

# Monochromacy



## Original Color

47.7185, 0.3286, 0.3266

## Achromatopsia

48.5150, 0.3127, 0.3290

## Achromatomaly

48.2748, 0.3179, 0.3277

# CSS Examples

## Text

The CSS property to change the color of the text to Yxy 47.7185, 0.3286, 0.3266 is called "color". The color property can be set on classes, ids or directly on the HTML element.

This example shows how text in the color `rgb(199, 179, 181)` looks like.

```
.text, #text, p{  
    color:rgb(199, 179, 181)  
}
```

If you want to add a text shadow in that color use the text-shadow property, you can generate a text shadow directly with our [CSS Text Shadow Generator](#).

Here you see how black text with a 4 pixel rgb(199, 179, 181) colored shadow looks like.

```
.shadow{ text-shadow: 4px 4px 2px rgb(199, 179, 181) }
```

## Border

The CSS property to change the border of an element to Yxy 47.7185, 0.3286, 0.3266 is called "border". The border property can be set on classes, ids or directly on the HTML element.

This example shows the color as border, it can be applied via the CSS property "border" or "border-color".

```
.border, #border, table{ border:4px solid rgb(199, 179, 181) }
```

If only the border color should be changed use the property `border-color`.

```
.border{ border-color:rgb(199, 179, 181) }
```

If you want to add a box shadow in that color use:

Here you see how a box with a 4 pixel `rgb(199, 179, 181)` colored shadow looks like.

```
.boxshadow{ -moz-box-shadow:4px 4px 4px  
4px rgb(199, 179, 181); -webkit-box-  
shadow:4px 4px 4px 4px rgb(199, 179, 181);  
box-shadow:4px 4px 4px 4px rgb(199, 179,  
181) }
```



# Background

The CSS property to change the background color of an element to Yxy 47.7185, 0.3286, 0.3266 is called "background". The background property can be set on classes, ids or directly on the HTML element.

```
.background, #background, body{  
background: rgb(199, 179, 181) }
```

If only the background color should be changed can be used:

```
.background{ background-color: rgb(199,  
179, 181) }
```

This example shows the color as background, it is applied via the CSS property "background".

To optimize and compress your CSS code, you can use our [online CSS compressor and optimizer](#) based on csstidy. If you want to create a linear or radial gradient as background or border, check our [CSS Gradient Generator](#).

Hey! You found this booklet interesting? Support Converting Colors with the new Membership Option!

The pro membership hides all ads, plus gives you double the colors in the color bucket, and more awesome pro features!

**[Learn more, Memberships starting at \\$2.50/m!](#)**

**Follow me  
on Twitter!**

@ConvertingColor