

Converting Colors

$Y_{xy}(47.8229, 0.3408, 0.3329)$

Have a look what the booklet for
Yxy(47.8229, 0.3408, 0.3329)
contains.

Yxy(47.6221, 0.3411, 0.3328)	3
<i>Conversions</i>	4
<i>Details</i>	6
<i>Harmonies</i>	12
<i>Previews</i>	24
<i>Color Blindness Simulation</i>	27
<i>CSS Examples</i>	30

Color

Yxy(47.6221, 0.3411, 0.3328)

Conversions

Conversions Part 1

Format	Color
Hex	CEB1AE
RGB	206, 177, 174
RGB Percent	81%, 69%, 68%
CMY	0.1923, 0.3058, 0.3176
CMYK	0.00, 0.14, 0.16, 0.19
HSL	6°, 25%, 75%
HSV	6°, 16%, 81%
XYZ	48.8098, 47.6221, 46.6634
YIQ	185.3290, 18.2470, 5.2150

Conversions

Conversions Part 2

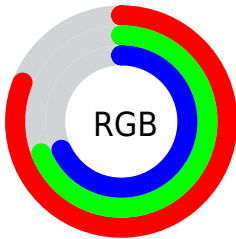
Format	Color
R _{YB}	206, 177, 174
Decimal	13545902
CIE Lab	74.59, 9.94, 5.39
CIE LCh	75, 11.311, 28.482
Yxy	47.6221, 0.3411, 0.3328
Android (android.graphics.Color)	4291735982 (0xFFCEB1AE)
YUV	185.3290, -5.5852, 18.1285
Hunter-Lab	69.0088, 5.4874, 8.2146

Details

The Yxy color $47.6221, 0.3411, 0.3328$ is a light color, and the websafe version is hex $CC9999$. A complement of this color would be $56.1452, 0.2892, 0.3252$, and the grayscale version is $48.7322, 0.3127, 0.3290$.

A 20% lighter version of the original color is $85.1950, 0.3304, 0.3330$, and $22.3998, 0.3485, 0.3324$ is the 20% darker color. If you saturate the color by 10%, you get $40.0080, 0.3649, 0.3355$, and if you desaturate by 10%, it is $56.3711, 0.3218, 0.3303$.

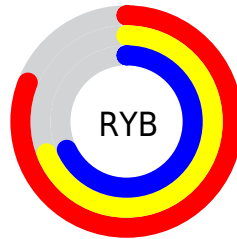
Distribution



Red (81%)

Green (69%)

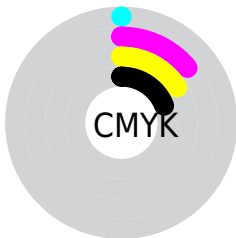
Blue (68%)



Red (81%)

Yellow (69%)

Blue (68%)

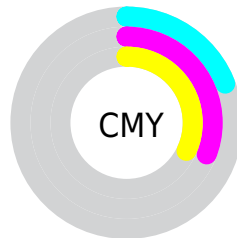


Cyan (0%)

Magenta (14%)

Yellow (16%)

Black (19%)



Cyan (19%)


Magenta (31%)

Yellow (32%)

Brightness & Saturation Gradients


These gradients show how the Yxy color 47.6221, 0.3411, 0.3328 changes by changing the brightness by 10 percent. The first figure shows a shift by +10% for each color and the second figure -10%.


Similar to the brightness gradients but the following saturation gradients show a change of the Yxy color 47.6221, 0.3411, 0.3328 by changing the saturation by 10% instead.


 47.6221, 0.3411,
0.3328

 47.6221, 0.3411,
0.3328


377.2923, 0.3269,
0.3311

 33.5277, 0.3447,
0.3332


 86.6415, 0.3359,
0.3322

 22.5310, 0.3492,
0.3337


112.3353, 0.3340,
0.3320

 14.2476, 0.3554,
0.3342


142.6643, 0.3323,
0.3318

 8.2931, 0.3639,
0.3349

178.0130, 0.3309,
0.3316

 4.2830, 0.3768,
0.3358

218.7658, 0.3297,
0.3314

 1.8331, 0.3980,
0.3367

265.3070, 0.3287,

 0.5077, 0.5149,

0.3313

0.3604

318.0210, 0.3277,
0.3312

0.0000, 0.0000,
0.0000

47.6221, 0.3411,
0.3328

47.6221, 0.3411,
0.3328

40.0080, 0.3649,
0.3355

56.3711, 0.3218,
0.3303

33.4762, 0.3939,
0.3381

66.2920, 0.3061,
0.3280

27.9795, 0.4289,
0.3406

77.4283, 0.2933,
0.3259

23.4646, 0.4695,
0.3426

89.7294, 0.2836,
0.3254

19.8735, 0.5141,
0.3436

91.8578, 0.2838,
0.3289

■ 17.1423, 0.5589,
0.3431

■ 15.1985, 0.5978,
0.3407

■ 13.9580, 0.6249,
0.3367

■ 13.5981, 0.6334,
0.3353

Harmonies

Analogous

The Analogous color harmony consists of three colors that are next to each other on the color wheel.



47.6221, 0.3308, 0.3194



47.6221, 0.3411, 0.3328



47.6221, 0.3436, 0.3456

Triad

The Triadic color harmony groups three colors that are evenly spaced from another and form a triangle on the color wheel.



47.6221, 0.3411, 0.3328



47.6221, 0.3092, 0.3507



47.6221, 0.2881, 0.3038

Complementary

The Complementary color scheme is a pair of colors which are on the opposite of each other on the color wheel.



47.6221, 0.3411, 0.3328



56.1452, 0.2892, 0.3252

Split Complementary

Split-complementary colors differ from the complementary color scheme. The scheme consists of three colors, the original color and two neighbors of the complement color.



47.6221, 0.2827, 0.3114



47.6221, 0.3411, 0.3328



47.6221, 0.2947, 0.3387

Square

The Square scheme is like the rectangle color scheme, but the four colors are evenly spaced on the color wheel.



47.6221, 0.3411, 0.3328



47.6221, 0.3249, 0.3564



47.6221, 0.2851, 0.3241



47.6221, 0.3001, 0.3030

Rectangle

The Rectangle color scheme consists of four colors that form a rectangle on the color wheel.



47.6221, 0.3411, 0.3328



47.6221, 0.3405, 0.3521



47.6221, 0.2851, 0.3241



47.6221, 0.2855, 0.3057

Sweetspot

The Sweet Spot groups the original color and five complimentary colors.



47.6242, 0.3411, 0.3328



92.0581, 0.3210, 0.3302



47.7166, 0.3167, 0.2940



19.4737, 0.3222, 0.3304



0.0000, 0.0000, 0.0000



21.4041, 0.3127, 0.3290

Same Dimension

The Same Dimension uses a secret algorithm to generate beautiful new colors.



47.6242, 0.3411, 0.3328



72.3907, 0.3494, 0.3338



54.1595, 0.3382, 0.3517



11.3810, 0.3288, 0.3312



8.4397, 0.6319, 0.3364



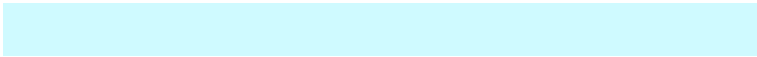
0.4951, 0.6082, 0.3553

Inverse Universe

The Inverse Universe completely reimagines the original color for something new.



56.1452, 0.2892, 0.3252



89.0600, 0.2838, 0.3242



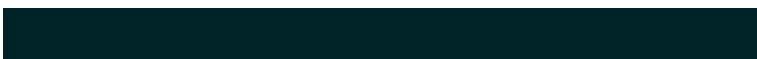
49.1310, 0.2884, 0.3052



12.5391, 0.2983, 0.3267



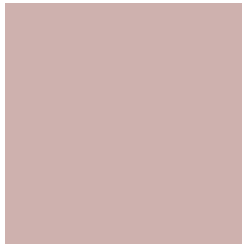
24.5947, 0.2165, 0.2994



1.3227, 0.2182, 0.3056

Previews

White Background



This preview shows how the Yxy color 47.6221, 0.3411, 0.3328 looks on a white background.

Color Contrast Check

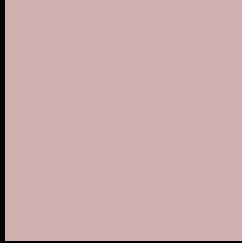
Large Text (above 18pt) WCAG AA × Fail

Any Text WCAG AA × Fail

Large Text (above 18pt) WCAG AAA × Fail

Any Text WCAG AAA × Fail

Black Background



This preview shows how the Yxy color 47.6221, 0.3411, 0.3328 looks on a black background.

Color Contrast Check

Large Text (above 18pt) WCAG AA ✓ Pass

Any Text WCAG AA ✓ Pass

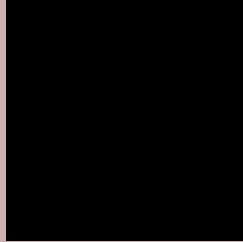
Large Text (above 18pt) WCAG AAA ✓ Pass

Any Text WCAG AAA ✓ Pass

If you want to check with other color combinations, try the [Color Contrast Checker](#).

Yxy 47.6221, 0.3411, 0.3328

Background



This preview shows how black text looks on a background with the Yxy color 47.6221, 0.3411, 0.3328.



This preview shows how white text looks on a background with the Yxy color 47.6221, 0.3411, 0.3328.

Color Blindness Simulation

Color vision deficiency is a very complex topic, and I could not describe the different causes any better than Wikipedia does, so if you want to learn more, you should check out their [article about color blindness](#).

Dichromacy



Original Color

47.6221, 0.3411, 0.3328

Protanopia

47.7327, 0.3218, 0.3367

Deuteranopia

47.4794, 0.3402, 0.3328



Tritanopia

47.7007, 0.3312, 0.3133

Trichromacy



Original Color

47.6221, 0.3411, 0.3328

Protanomaly

47.7844, 0.3289, 0.3354

Deuteranomaly

47.4794, 0.3402, 0.3328

Tritanomaly

47.7350, 0.3344, 0.3205

Monochromacy



Original Color

47.6221, 0.3411, 0.3328

Achromatopsia

48.5150, 0.3127, 0.3290

Achromatomaly

48.1295, 0.3230, 0.3303

CSS Examples

Text

The CSS property to change the color of the text to Yxy 47.6221, 0.3411, 0.3328 is called "color". The color property can be set on classes, ids or directly on the HTML element.

This example shows how text in the color `rgb(206, 177, 174)` looks like.

```
.text, #text, p{  
    color:rgb(206, 177, 174)  
}
```

If you want to add a text shadow in that color use the text-shadow property, you can generate a text shadow directly with our [CSS Text Shadow Generator](#).

Here you see how black text with a 4 pixel rgb(206, 177, 174) colored shadow looks like.

```
.shadow{ text-shadow: 4px 4px 2px rgb(206, 177, 174) }
```

Border

The CSS property to change the border of an element to Yxy 47.6221, 0.3411, 0.3328 is called "border". The border property can be set on classes, ids or directly on the HTML element.

This example shows the color as border, it can be applied via the CSS property "border" or "border-color".

```
.border, #border, table{ border:4px solid rgb(206, 177, 174) }
```

If only the border color should be changed use the property border-color.

```
.border{ border-color:rgb(206, 177, 174) }
```

If you want to add a box shadow in that color use:

Here you see how a box with a 4 pixel rgb(206, 177, 174) colored shadow looks like.

```
.boxshadow{ -moz-box-shadow:4px 4px 4px  
4px rgb(206, 177, 174); -webkit-box-  
shadow:4px 4px 4px 4px rgb(206, 177, 174);  
box-shadow:4px 4px 4px 4px rgb(206, 177,  
174) }
```


Background

The CSS property to change the background color of an element to Yxy 47.6221, 0.3411, 0.3328 is called "background". The background property can be set on classes, ids or directly on the HTML element.

```
.background, #background, body{  
background: rgb(206, 177, 174) }
```

If only the background color should be changed can be used:

```
.background{ background-color: rgb(206,  
177, 174) }
```

This example shows the color as background, it is applied via the CSS property "background".

To optimize and compress your CSS code, you can use our [online CSS compressor and optimizer](#) based on csstidy. If you want to create a linear or radial gradient as background or border, check our [CSS Gradient Generator](#).

Hey! You found this booklet interesting? Support Converting Colors with the new Membership Option!

The pro membership hides all ads, plus gives you double the colors in the color bucket, and more awesome pro features!

[Learn more, Memberships starting at \\$2.50/m!](#)

**Follow me
on Twitter!**

@ConvertingColor