

Converting Colors

Yxy(47.9713, 0.3308, 0.3415)

Have a look what the booklet for
Yxy(47.9713, 0.3308, 0.3415)
contains.

Yxy(47.9038, 0.3312, 0.3418)	3
Conversions	4
Details	6
Harmonies	12
Previews	24
Color Blindness Simulation	27
CSS Examples	30

Color

Yxy(47.9038, 0.3312, 0.3418)

Conversions

Conversions Part 1

Format	Color
Hex	C2B6AC
RGB	194, 182, 172
RGB Percent	76%, 71%, 67%
CMY	0.2393, 0.2862, 0.3255
CMYK	0.00, 0.06, 0.11, 0.24
HSL	27°, 15%, 72%
HSV	27°, 11%, 76%
XYZ	46.4182, 47.9038, 45.8296
YIQ	184.4480, 10.3620, -0.5660

Conversions

Conversions Part 2

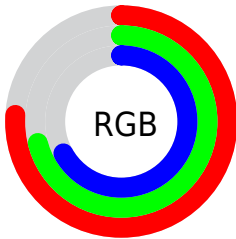
Format	Color
RYB	194, 190, 172
Decimal	12760748
CIELab	74.76, 2.52, 6.60
CIELCh	75, 7.071, 69.083
Yxy	47.9038, 0.3312, 0.3418
Android (android.graphics.Color)	4290950828 (0xFFC2B6AC)
YUV	184.4480, -6.1369, 8.3771
Hunter-Lab	69.2126, -1.4090, 9.1895

Details

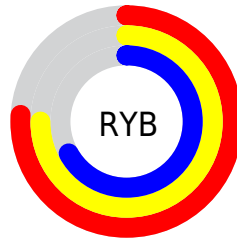
The Yxy color $47.9038, 0.3312, 0.3418$ is a light color, and the websafe version is hex `CCCCCC`. A complement of this color would be $46.9324, 0.2953, 0.3159$, and the grayscale version is $48.2234, 0.3127, 0.3290$.

A 20% lighter version of the original color is $87.2044, 0.3284, 0.3400$, and $22.6320, 0.3359, 0.3447$ is the 20% darker color. If you saturate the color by 10%, you get $43.0495, 0.3501, 0.3538$, and if you desaturate by 10%, it is $53.1975, 0.3147, 0.3305$.

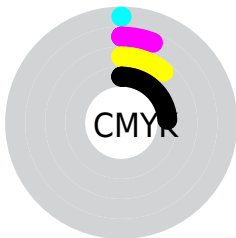
Distribution



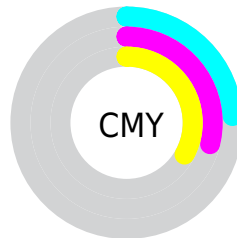
- Red (76%)
- Green (71%)
- Blue (67%)



- Red (76%)
- Yellow (75%)
- Blue (67%)



- Cyan (0%)
- Magenta (6%)
- Yellow (11%)
- Black (24%)





- Cyan (24%)
- Magenta (29%)
- Yellow (33%)

Brightness & Saturation Gradients

These gradients show how the Yxy color 47.9038, 0.3312, 0.3418 changes by changing the brightness by 10 percent. The first figure shows a shift by +10% for each color and the second figure -10%.


Similar to the brightness gradients but the following saturation gradients show a change of the Yxy color 47.9038, 0.3312, 0.3418 by changing the saturation by 10% instead.


 47.9038, 0.3312,
0.3418

 47.9038, 0.3312,
0.3418


378.4107, 0.3220,
0.3355

 33.7507, 0.3335,
0.3434


 87.0612, 0.3278,
0.3395

 22.7022, 0.3365,
0.3453


112.8342, 0.3266,
0.3387

 14.3737, 0.3404,
0.3480


143.2494, 0.3255,
0.3379

 8.3811, 0.3459,
0.3516

178.6910, 0.3246,
0.3373

 4.3397, 0.3541,
0.3569

219.5436, 0.3238,
0.3368

 1.8654, 0.3676,
0.3654

266.1915, 0.3231,

 0.5274, 0.4680,

0.3363

0.4385

319.0190, 0.3225,
0.3359

0.0000, 0.0000,
0.0000

47.9038, 0.3312,
0.3418

47.9038, 0.3312,
0.3418

43.0495, 0.3501,
0.3538

53.1975, 0.3147,
0.3305

38.6163, 0.3718,
0.3661

58.9355, 0.3005,
0.3199

34.5940, 0.3961,
0.3783

65.1309, 0.2881,
0.3101

30.9694, 0.4230,
0.3896

71.7941, 0.2775,
0.3011

27.7285, 0.4518,
0.3991

78.0011, 0.2755,
0.3072

■ 24.8565, 0.4813,
0.4055

■ 84.2236, 0.2764,
0.3187

■ 22.3369, 0.5098,
0.4076

■ 90.2065, 0.2773,
0.3289

■ 20.1516, 0.5352,
0.4045

■ 18.5050, 0.5542,
0.3981

Harmonies

Analogous

The Analogous color harmony consists of three colors that are next to each other on the color wheel.



47.9038, 0.3315, 0.3345



47.9038, 0.3312, 0.3418



47.9038, 0.3259, 0.3458

Triad

The Triadic color harmony groups three colors that are evenly spaced from another and form a triangle on the color wheel.



47.9038, 0.3312, 0.3418



47.9038, 0.2989, 0.3319



47.9038, 0.3082, 0.3134

Complementary

The Complementary color scheme is a pair of colors which are on the opposite of each other on the color wheel.



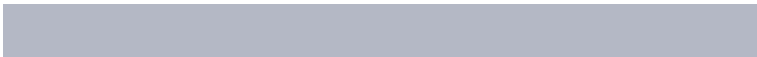
47.9038, 0.3312, 0.3418



46.9324, 0.2953, 0.3159

Split Complementary

Split-complementary colors differ from the complementary color scheme. The scheme consists of three colors, the original color and two neighbors of the complement color.



47.9038, 0.2996, 0.3125



47.9038, 0.3312, 0.3418



47.9038, 0.2943, 0.3230

Square

The Square scheme is like the rectangle color scheme, but the four colors are evenly spaced on the color wheel.



47.9038, 0.3312, 0.3418



47.9038, 0.3072, 0.3401



47.9038, 0.2946, 0.3160



47.9038, 0.3181, 0.3183

Rectangle

The Rectangle color scheme consists of four colors that form a rectangle on the color wheel.



47.9038, 0.3312, 0.3418



47.9038, 0.3202, 0.3460



47.9038, 0.2946, 0.3160



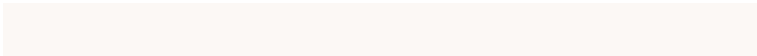
47.9038, 0.3050, 0.3126

Sweetspot

The Sweet Spot groups the original color and five complimentary colors.



47.9059, 0.3312, 0.3418



94.7002, 0.3174, 0.3324



44.4364, 0.3223, 0.3137



20.5628, 0.3187, 0.3333



0.0000, 0.0000, 0.0000



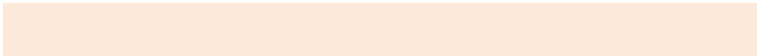
21.4041, 0.3127, 0.3290

Same Dimension

The Same Dimension uses a secret algorithm to generate beautiful new colors.



47.9059, 0.3312, 0.3418



84.1895, 0.3364, 0.3452



52.5317, 0.3296, 0.3553



10.8167, 0.3278, 0.3395



12.3292, 0.5521, 0.3999



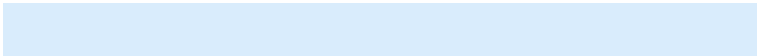
0.6703, 0.5150, 0.4293

Inverse Universe

The Inverse Universe completely reimagines the original color for something new.



46.9324, 0.2953, 0.3159



82.0181, 0.2908, 0.3122



42.5904, 0.2951, 0.3013



10.6364, 0.2984, 0.3183



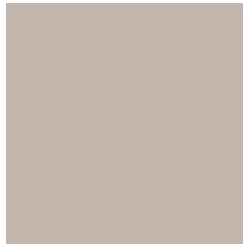
9.4540, 0.1818, 0.1745



0.5449, 0.1923, 0.2122

Previews

White Background



This preview shows how the Yxy color 47.9038, 0.3312, 0.3418 looks on a white background.

Color Contrast Check

Large Text (above 18pt) WCAG AA × Fail

Any Text WCAG AA × Fail

Large Text (above 18pt) WCAG AAA × Fail

Any Text WCAG AAA × Fail

Black Background



This preview shows how the Yxy color 47.9038, 0.3312, 0.3418 looks on a black background.

Color Contrast Check

Large Text (above 18pt) WCAG AA ✓ Pass

Any Text WCAG AA ✓ Pass

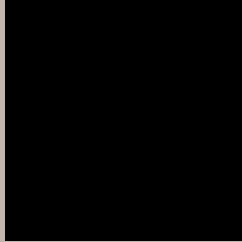
Large Text (above 18pt) WCAG AAA ✓ Pass

Any Text WCAG AAA ✓ Pass

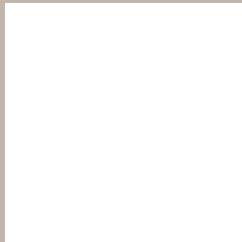
If you want to check with other color combinations, try the [Color Contrast Checker](#).

Yxy 47.9038, 0.3312, 0.3418

Background



This preview shows how black text looks on a background with the Yxy color 47.9038, 0.3312, 0.3418.

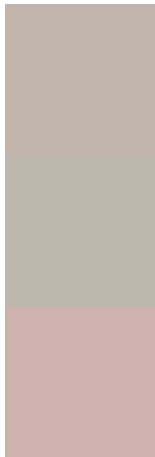


This preview shows how white text looks on a background with the Yxy color 47.9038, 0.3312, 0.3418.

Color Blindness Simulation

Color vision deficiency is a very complex topic, and I could not describe the different causes any better than Wikipedia does, so if you want to learn more, you should check out their [article about color blindness](#).

Dichromacy



Original Color

47.9038, 0.3312, 0.3418

Protanopia

47.8313, 0.3267, 0.3419

Deuteranopia

47.9797, 0.3418, 0.3353



Tritanopia

47.9608, 0.3170, 0.3117

Trichromacy



Original Color

47.9038, 0.3312, 0.3418

Protanomaly

47.9605, 0.3276, 0.3419

Deuteranomaly

47.8139, 0.3380, 0.3366

Tritanomaly

47.8811, 0.3225, 0.3228

Monochromacy



Original Color

47.9038, 0.3312, 0.3418

Achromatopsia

47.9320, 0.3127, 0.3290

Achromatomaly

47.8536, 0.3194, 0.3329

CSS Examples

Text

The CSS property to change the color of the text to Yxy 47.9038, 0.3312, 0.3418 is called "color". The color property can be set on classes, ids or directly on the HTML element.

This example shows how text in the color `rgb(194, 182, 172)` looks like.

```
.text, #text, p{  
    color:rgb(194, 182, 172)  
}
```

If you want to add a text shadow in that color use the text-shadow property, you can generate a text shadow directly with our [CSS Text Shadow Generator](#).

Here you see how black text with a 4 pixel rgb(194, 182, 172) colored shadow looks like.

```
.shadow{ text-shadow: 4px 4px 2px rgb(194, 182, 172) }
```

Border

The CSS property to change the border of an element to Yxy 47.9038, 0.3312, 0.3418 is called "border". The border property can be set on classes, ids or directly on the HTML element.

This example shows the color as border, it can be applied via the CSS property "border" or "border-color".

```
.border, #border, table{ border:4px solid rgb(194, 182, 172) }
```

If only the border color should be changed use the property `border-color`.

```
.border{ border-color:rgb(194, 182, 172) }
```

If you want to add a box shadow in that color use:

Here you see how a box with a 4 pixel `rgb(194, 182, 172)` colored shadow looks like.

```
.boxshadow{ -moz-box-shadow:4px 4px 4px  
4px rgb(194, 182, 172); -webkit-box-  
shadow:4px 4px 4px 4px rgb(194, 182, 172);  
box-shadow:4px 4px 4px 4px rgb(194, 182,  
172) }
```


Background

The CSS property to change the background color of an element to Yxy 47.9038, 0.3312, 0.3418 is called "background". The background property can be set on classes, ids or directly on the HTML element.

```
.background, #background, body{  
background: rgb(194, 182, 172) }
```

If only the background color should be changed can be used:

```
.background{ background-color: rgb(194,  
182, 172) }
```

This example shows the color as background, it is applied via the CSS property "background".

To optimize and compress your CSS code, you can use our [online CSS compressor and optimizer](#) based on csstidy. If you want to create a linear or radial gradient as background or border, check our [CSS Gradient Generator](#).

Hey! You found this booklet interesting? Support Converting Colors with the new Membership Option!

The pro membership hides all ads, plus gives you double the colors in the color bucket, and more awesome pro features!

[Learn more, Memberships starting at \\$2.50/m!](#)

**Follow me
on Twitter!**

@ConvertingColor