

# Converting Colors

$Yxy(47.9969, 0.3413, 0.3250)$

Have a look what the booklet for  
Yxy(47.9969, 0.3413, 0.3250)  
contains.

<b>Yxy(48.1542, 0.3415, 0.3255)</b> .....	3
<b><i>Conversions</i></b> .....	4
<b><i>Details</i></b> .....	6
<b><i>Harmonies</i></b> .....	12
<b><i>Previews</i></b> .....	24
<b><i>Color Blindness Simulation</i></b> .....	27
<b><i>CSS Examples</i></b> .....	30

# Color

**Yxy(48.1542, 0.3415, 0.3255)**

# Conversions

## Conversions Part 1

Format	Color
Hex	D3B0B3
RGB	211, 176, 179
RGB Percent	83%, 69%, 70%
CMY	0.1726, 0.3098, 0.2982
CMYK	0.00, 0.17, 0.15, 0.17
HSL	355°, 28%, 76%
HSV	355°, 17%, 83%
XYZ	50.5212, 48.1542, 49.2637
YIQ	186.8070, 19.8970, 8.3530

# Conversions

## Conversions Part 2

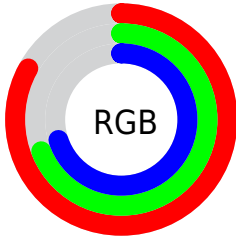
<b>Format</b>	<b>Color</b>
R <sub>Y</sub> B	211, 176, 179
Decimal	13873331
CIE Lab	74.92, 13.12, 3.22
CIE LCh	75, 13.510, 13.803
Yxy	48.1542, 0.3415, 0.3255
Android (android.graphics.Color)	4292063411 (0xFFD3B0B3)
YUV	186.8070, -3.8489, 21.2173
Hunter-Lab	69.3932, 8.5175, 6.4840

# Details

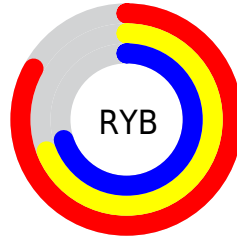
The Yxy color  $48.1542, 0.3415, 0.3255$  is a light color, and the websafe version is hex  $CC9999$ . A complement of this color would be  $60.3706, 0.2897, 0.3326$ , and the grayscale version is  $49.5931, 0.3127, 0.3290$ .

A 20% lighter version of the original color is  $84.9714, 0.3266, 0.3261$ , and  $22.7402, 0.3502, 0.3242$  is the 20% darker color. If you saturate the color by 10%, you get  $39.7873, 0.3647, 0.3233$ , and if you desaturate by 10%, it is  $57.9208, 0.3229, 0.3277$ .

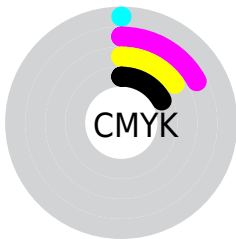
# Distribution



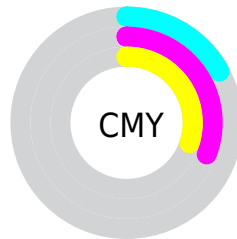
- Red (83%)
- Green (69%)
- Blue (70%)



- Red (83%)
- Yellow (69%)
- Blue (70%)



- Cyan (0%)
- Magenta (17%)
- Yellow (15%)
- Black (17%)




- Cyan (17%)
- Magenta (31%)
- Yellow (30%)


# Brightness & Saturation Gradients

These gradients show how the Yxy color 48.1542, 0.3415, 0.3255 changes by changing the brightness by 10 percent. The first figure shows a shift by +10% for each color and the second figure -10%.


Similar to the brightness gradients but the following saturation gradients show a change of the Yxy color 48.1542, 0.3415, 0.3255 by changing the saturation by 10% instead.





 48.1542, 0.3415,  
0.3255

 48.1542, 0.3415,  
0.3255


379.4030, 0.3271,  
0.3274

 33.9490, 0.3451,  
0.3250


 87.4339, 0.3363,  
0.3262

 22.8544, 0.3497,  
0.3243


113.2773, 0.3343,  
0.3265

 14.4861, 0.3558,  
0.3234


143.7688, 0.3327,  
0.3267

 8.4595, 0.3644,  
0.3221

179.2929, 0.3312,  
0.3269

 4.3904, 0.3772,  
0.3200

220.2340, 0.3300,  
0.3270

 1.8942, 0.3983,  
0.3162

266.9765, 0.3289,

 0.5449, 0.4787,

0.3271

0.3112

319.9047, 0.3280,  
0.3273

0.0000, 0.0000,  
0.0000

48.1542, 0.3415,  
0.3255

48.1542, 0.3415,  
0.3255

39.7873, 0.3647,  
0.3233

57.9208, 0.3229,  
0.3277

32.7499, 0.3933,  
0.3210

69.1403, 0.3080,  
0.3297

26.9754, 0.4279,  
0.3190

81.8710, 0.2960,  
0.3315

22.3890, 0.4686,  
0.3176

92.5874, 0.2866,  
0.3289

18.9080, 0.5135,  
0.3171

■ 16.4390, 0.5587,  
0.3181

■ 14.8733, 0.5980,  
0.3207

■ 14.0720, 0.6252,  
0.3246

■ 13.8906, 0.6318,  
0.3254

# Harmonies

## Analogous

The Analogous color harmony consists of three colors that are next to each other on the color wheel.



48.1542, 0.3257, 0.3108



48.1542, 0.3415, 0.3255



48.1542, 0.3494, 0.3415

# Triad

The Triadic color harmony groups three colors that are evenly spaced from another and form a triangle on the color wheel.



48.1542, 0.3415, 0.3255



48.1542, 0.3178, 0.3594



48.1542, 0.2793, 0.3025

# Complementary

The Complementary color scheme is a pair of colors which are on the opposite of each other on the color wheel.



48.1542, 0.3415, 0.3255



60.3706, 0.2897, 0.3326

# Split Complementary

Split-complementary colors differ from the complementary color scheme. The scheme consists of three colors, the original color and two neighbors of the complement color.



48.1542, 0.2774, 0.3148



48.1542, 0.3415, 0.3255



48.1542, 0.2992, 0.3483

# Square

The Square scheme is like the rectangle color scheme, but the four colors are evenly spaced on the color wheel.



48.1542, 0.3415, 0.3255



48.1542, 0.3353, 0.3617



48.1542, 0.2846, 0.3316



48.1542, 0.2899, 0.2976



# Rectangle

The Rectangle color scheme consists of four colors that form a rectangle on the color wheel.



48.1542, 0.3415, 0.3255



48.1542, 0.3490, 0.3509



48.1542, 0.2846, 0.3316



48.1542, 0.2777, 0.3059

# Sweetspot

The Sweet Spot groups the original color and five complimentary colors.



48.1564, 0.3415, 0.3255



91.4041, 0.3204, 0.3280



49.0945, 0.3117, 0.2879



19.3156, 0.3216, 0.3278



0.0000, 0.0000, 0.0000



21.4041, 0.3127, 0.3290



# Same Dimension

The Same Dimension uses a secret algorithm to generate beautiful new colors.



48.1564, 0.3415, 0.3255



69.0153, 0.3493, 0.3247



53.8108, 0.3414, 0.3458



11.8242, 0.3277, 0.3271



8.3902, 0.6299, 0.3243



0.4749, 0.6000, 0.3079



# Inverse Universe

The Inverse Universe completely reimagines the original color for something new.



48.1564, 0.3415, 0.3255



69.0153, 0.3493, 0.3247



53.8662, 0.2870, 0.3115



11.8242, 0.3277, 0.3271



8.3902, 0.6299, 0.3243

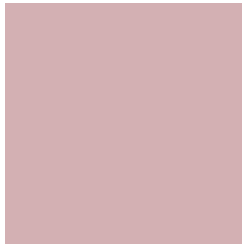


0.4749, 0.6000, 0.3079



# Previews

## White Background



This preview shows how the Yxy color 48.1542, 0.3415, 0.3255 looks on a white background.

## Color Contrast Check

Large Text (above 18pt) WCAG AA × Fail

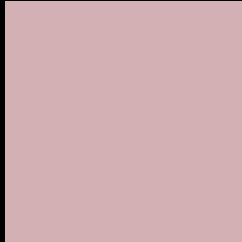
Any Text WCAG AA × Fail

Large Text (above 18pt) WCAG AAA × Fail

Any Text WCAG AAA × Fail



# Black Background



This preview shows how the Yxy color 48.1542, 0.3415, 0.3255 looks on a black background.

## Color Contrast Check

Large Text (above 18pt) WCAG AA ✓ Pass

Any Text WCAG AA ✓ Pass

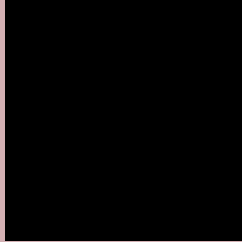
Large Text (above 18pt) WCAG AAA ✓ Pass

Any Text WCAG AAA ✓ Pass

If you want to check with other color combinations, try the [Color Contrast Checker](#).

**Yxy 48.1542, 0.3415, 0.3255**

## Background



This preview shows how black text looks on a background with the Yxy color 48.1542, 0.3415, 0.3255.



This preview shows how white text looks on a background with the Yxy color 48.1542, 0.3415, 0.3255.

# Color Blindness Simulation

Color vision deficiency is a very complex topic, and I could not describe the different causes any better than Wikipedia does, so if you want to learn more, you should check out their [article about color blindness](#).

## Dichromacy



### Original Color

48.1542, 0.3415, 0.3255

### Protanopia

48.3912, 0.3169, 0.3303

### Deuteranopia

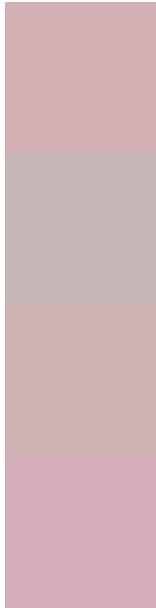
48.0746, 0.3357, 0.3278



## Tritanopia

48.2878, 0.3347, 0.3135

# Trichromacy



## Original Color

48.1542, 0.3415, 0.3255

## Protanomaly

48.1609, 0.3249, 0.3278

## Deuteranomaly

47.9644, 0.3377, 0.3266

## Tritanomaly

48.1598, 0.3373, 0.3171

# Monochromacy



## Original Color

48.1542, 0.3415, 0.3255

## Achromatopsia

49.6933, 0.3127, 0.3290

## Achromatomaly

49.0634, 0.3230, 0.3278

# CSS Examples

## Text

The CSS property to change the color of the text to Yxy 48.1542, 0.3415, 0.3255 is called "color". The color property can be set on classes, ids or directly on the HTML element.

This example shows how text in the color `rgb(211, 176, 179)` looks like.

```
.text, #text, p{  
    color:rgb(211, 176, 179)  
}
```

If you want to add a text shadow in that color use the text-shadow property, you can generate a text shadow directly with our [CSS Text Shadow Generator](#).

Here you see how black text with a 4 pixel rgb(211, 176, 179) colored shadow looks like.

```
.shadow{ text-shadow: 4px 4px 2px rgb(211, 176, 179) }
```

## Border

The CSS property to change the border of an element to Yxy 48.1542, 0.3415, 0.3255 is called "border". The border property can be set on classes, ids or directly on the HTML element.

This example shows the color as border, it can be applied via the CSS property "border" or "border-color".

```
.border, #border, table{ border:4px solid rgb(211, 176, 179) }
```

If only the border color should be changed use the property `border-color`.

```
.border{ border-color:rgb(211, 176, 179) }
```

If you want to add a box shadow in that color use:

Here you see how a box with a 4 pixel `rgb(211, 176, 179)` colored shadow looks like.

```
.boxshadow{ -moz-box-shadow:4px 4px 4px  
4px rgb(211, 176, 179); -webkit-box-  
shadow:4px 4px 4px 4px rgb(211, 176, 179);  
box-shadow:4px 4px 4px 4px rgb(211, 176,  
179) }
```



# Background

The CSS property to change the background color of an element to Yxy 48.1542, 0.3415, 0.3255 is called "background". The background property can be set on classes, ids or directly on the HTML element.

```
.background, #background, body{  
background: rgb(211, 176, 179) }
```

If only the background color should be changed can be used:

```
.background{ background-color: rgb(211,  
176, 179) }
```

This example shows the color as background, it is applied via the CSS property "background".

To optimize and compress your CSS code, you can use our [online CSS compressor and optimizer](#) based on csstidy. If you want to create a linear or radial gradient as background or border, check our [CSS Gradient Generator](#).

Hey! You found this booklet interesting? Support Converting Colors with the new Membership Option!

The pro membership hides all ads, plus gives you double the colors in the color bucket, and more awesome pro features!

**[Learn more, Memberships starting at \\$2.50/m!](#)**

**Follow me  
on Twitter!**

@ConvertingColor