

Converting Colors

$Yxy(48.0971, 0.3315, 0.3229)$

Have a look what the booklet for
Yxy(48.0971, 0.3315, 0.3229)
contains.

Yxy(48.0971, 0.3315, 0.3229)	3
Conversions	4
Details	6
Harmonies	12
Previews	24
Color Blindness Simulation	27
CSS Examples	30

Color

Yxy(48.0971, 0.3315, 0.3229)

Conversions

Conversions Part 1

Format	Color
Hex	CCB2B7
RGB	204, 178, 183
RGB Percent	80%, 70%, 72%
CMY	0.1998, 0.3020, 0.2824
CMYK	0.00, 0.13, 0.10, 0.20
HSL	348°, 20%, 75%
HSV	348°, 13%, 80%
XYZ	49.3781, 48.0971, 51.4783
YIQ	186.3440, 13.8910, 7.0670

Conversions

Conversions Part 2

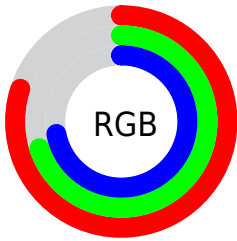
Format	Color
RYB	204, 178, 183
Decimal	13415095
CIELab	74.89, 10.20, 0.89
CIELCh	75, 10.235, 5.011
Yxy	48.0971, 0.3315, 0.3229
Android (android.graphics.Color)	4291605175 (0xFFCCB2B7)
YUV	186.3440, -1.6486, 15.4843
Hunter-Lab	69.3521, 5.7244, 4.5369

Details

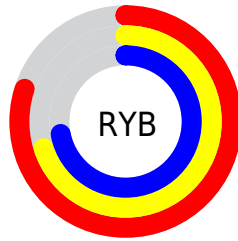
The Yxy color **48.0971, 0.3315, 0.3229** is a light color, and the websafe version is hex **CCCCCC**. A complement of this color would be **56.7962, 0.2967, 0.3352**, and the grayscale version is **49.3128, 0.3127, 0.3290**.

A 20% lighter version of the original color is **86.3376, 0.3238, 0.3241**, and **22.7630, 0.3374, 0.3208** is the 20% darker color. If you saturate the color by 10%, you get **39.9283, 0.3502, 0.3178**, and if you desaturate by 10%, it is **57.5583, 0.3164, 0.3277**.

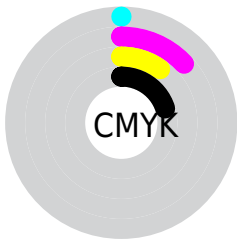
Distribution



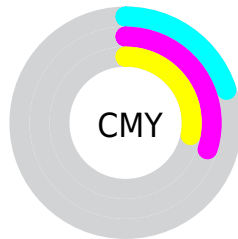
- Red (80%)
- Green (70%)
- Blue (72%)



- Red (80%)
- Yellow (70%)
- Blue (72%)



- Cyan (0%)
- Magenta (13%)
- Yellow (10%)
- Black (20%)




- Cyan (20%)
- Magenta (30%)
- Yellow (28%)

Brightness & Saturation Gradients


These gradients show how the Yxy color 48.0971, 0.3315, 0.3229 changes by changing the brightness by 10 percent. The first figure shows a shift by +10% for each color and the second figure -10%.


Similar to the brightness gradients but the following saturation gradients show a change of the Yxy color 48.0971, 0.3315, 0.3229 by changing the saturation by 10% instead.


 48.0971, 0.3315,
0.3229

 48.0971, 0.3315,
0.3229


379.1769, 0.3221,
0.3260

 33.9038, 0.3338,
0.3221


 87.3490, 0.3281,
0.3240

 22.8197, 0.3368,
0.3211


113.1763, 0.3268,
0.3244

 14.4604, 0.3408,
0.3198


143.6504, 0.3257,
0.3248

 8.4416, 0.3463,
0.3179

179.1558, 0.3248,
0.3251

 4.3788, 0.3546,
0.3151

220.0767, 0.3240,
0.3254

 1.8876, 0.3682,
0.3105

266.7976, 0.3233,

 0.5409, 0.4169,

0.3256

0.2955

319.7028, 0.3227,
0.3258

0.0000, 0.0000,
0.0000

48.0971, 0.3315,
0.3229

48.0971, 0.3315,
0.3229

39.9283, 0.3502,
0.3178

57.5583, 0.3164,
0.3277

32.9895, 0.3733,
0.3126

68.3579, 0.3041,
0.3322

27.2228, 0.4013,
0.3076

80.5475, 0.2942,
0.3363

22.5633, 0.4347,
0.3032

91.1990, 0.2859,
0.3353

18.9395, 0.4730,
0.3004

91.5837, 0.2827,
0.3289

■ 16.2715, 0.5144,
0.2999

■ 14.4678, 0.5552,
0.3026

■ 13.4186, 0.5906,
0.3086

■ 12.9916, 0.6109,
0.3139

Harmonies

Analogous

The Analogous color harmony consists of three colors that are next to each other on the color wheel.



48.0971, 0.3185, 0.3124



48.0971, 0.3315, 0.3229



48.0971, 0.3394, 0.3351

Triad

The Triadic color harmony groups three colors that are evenly spaced from another and form a triangle on the color wheel.



48.0971, 0.3315, 0.3229



48.0971, 0.3208, 0.3532



48.0971, 0.2861, 0.3112

Complementary

The Complementary color scheme is a pair of colors which are on the opposite of each other on the color wheel.



48.0971, 0.3315, 0.3229



56.7962, 0.2967, 0.3352

Split Complementary

Split-complementary colors differ from the complementary color scheme. The scheme consists of three colors, the original color and two neighbors of the complement color.



48.0971, 0.2867, 0.3219



48.0971, 0.3315, 0.3229



48.0971, 0.3065, 0.3465

Square

The Square scheme is like the rectangle color scheme, but the four colors are evenly spaced on the color wheel.



48.0971, 0.3315, 0.3229



48.0971, 0.3331, 0.3529



48.0971, 0.2941, 0.3349



48.0971, 0.2924, 0.3056

Rectangle

The Rectangle color scheme consists of four colors that form a rectangle on the color wheel.



48.0971, 0.3315, 0.3229



48.0971, 0.3407, 0.3428



48.0971, 0.2941, 0.3349



48.0971, 0.2855, 0.3143

Sweetspot

The Sweet Spot groups the original color and five complimentary colors.



48.0992, 0.3315, 0.3229



93.1445, 0.3181, 0.3271



48.3180, 0.3098, 0.2974



19.6695, 0.3192, 0.3268



0.0000, 0.0000, 0.0000



21.4041, 0.3127, 0.3290

Same Dimension

The Same Dimension uses a secret algorithm to generate beautiful new colors.



48.0992, 0.3315, 0.3229



76.1442, 0.3357, 0.3217



51.0940, 0.3345, 0.3386



11.2483, 0.3260, 0.3246



8.1835, 0.6078, 0.3122



0.4329, 0.5542, 0.2827

Inverse Universe

The Inverse Universe completely reimagines the original color for something new.



48.0992, 0.3315, 0.3229



76.1442, 0.3357, 0.3217



53.4086, 0.2931, 0.3192



11.2483, 0.3260, 0.3246



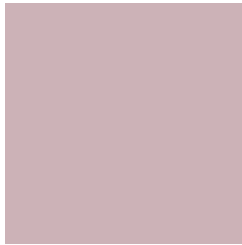
8.1835, 0.6078, 0.3122



0.4329, 0.5542, 0.2827

Previews

White Background



This preview shows how the Yxy color 48.0971, 0.3315, 0.3229 looks on a white background.

Color Contrast Check

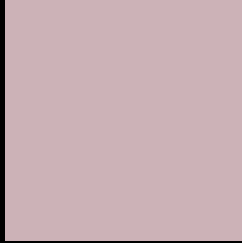
Large Text (above 18pt) WCAG AA × Fail

Any Text WCAG AA × Fail

Large Text (above 18pt) WCAG AAA × Fail

Any Text WCAG AAA × Fail

Black Background



This preview shows how the Yxy color 48.0971, 0.3315, 0.3229 looks on a black background.

Color Contrast Check

Large Text (above 18pt) WCAG AA ✓ Pass

Any Text WCAG AA ✓ Pass

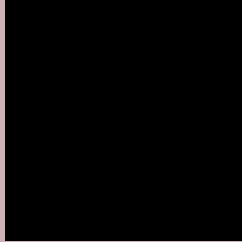
Large Text (above 18pt) WCAG AAA ✓ Pass

Any Text WCAG AAA ✓ Pass

If you want to check with other color combinations, try the [Color Contrast Checker](#).

Yxy 48.0971, 0.3315, 0.3229

Background



This preview shows how black text looks on a background with the Yxy color 48.0971, 0.3315, 0.3229.



This preview shows how white text looks on a background with the Yxy color 48.0971, 0.3315, 0.3229.

Color Blindness Simulation

Color vision deficiency is a very complex topic, and I could not describe the different causes any better than Wikipedia does, so if you want to learn more, you should check out their [article about color blindness](#).

Dichromacy



Original Color

48.0971, 0.3315, 0.3229

Protanopia

48.3909, 0.3137, 0.3265

Deuteranopia

47.9562, 0.3306, 0.3229



Tritanopia

48.1850, 0.3257, 0.3120

Trichromacy



Original Color

48.0971, 0.3315, 0.3229

Protanomaly

48.2961, 0.3197, 0.3252

Deuteranomaly

47.9562, 0.3306, 0.3229

Tritanomaly

48.0543, 0.3283, 0.3156

Monochromacy



Original Color

48.0971, 0.3315, 0.3229

Achromatopsia

49.1021, 0.3127, 0.3290

Achromatomaly

48.7072, 0.3196, 0.3265

CSS Examples

Text

The CSS property to change the color of the text to Yxy 48.0971, 0.3315, 0.3229 is called "color". The color property can be set on classes, ids or directly on the HTML element.

This example shows how text in the color `rgb(204, 178, 183)` looks like.

```
.text, #text, p{  
    color:rgb(204, 178, 183)  
}
```

If you want to add a text shadow in that color use the text-shadow property, you can generate a text shadow directly with our [CSS Text Shadow Generator](#).

Here you see how black text with a 4 pixel rgb(204, 178, 183) colored shadow looks like.

```
.shadow{ text-shadow: 4px 4px 2px rgb(204, 178, 183) }
```

Border

The CSS property to change the border of an element to Yxy 48.0971, 0.3315, 0.3229 is called "border". The border property can be set on classes, ids or directly on the HTML element.

This example shows the color as border, it can be applied via the CSS property "border" or "border-color".

```
.border, #border, table{ border:4px solid rgb(204, 178, 183) }
```

If only the border color should be changed use the property `border-color`.

```
.border{ border-color:rgb(204, 178, 183) }
```

If you want to add a box shadow in that color use:

Here you see how a box with a 4 pixel `rgb(204, 178, 183)` colored shadow looks like.

```
.boxshadow{ -moz-box-shadow:4px 4px 4px  
4px rgb(204, 178, 183); -webkit-box-  
shadow:4px 4px 4px 4px rgb(204, 178, 183);  
box-shadow:4px 4px 4px 4px rgb(204, 178,  
183) }
```


Background

The CSS property to change the background color of an element to Yxy 48.0971, 0.3315, 0.3229 is called "background". The background property can be set on classes, ids or directly on the HTML element.

```
.background, #background, body{  
background: rgb(204, 178, 183) }
```

If only the background color should be changed can be used:

```
.background{ background-color: rgb(204,  
178, 183) }
```

This example shows the color as background, it is applied via the CSS property "background".

To optimize and compress your CSS code, you can use our [online CSS compressor and optimizer](#) based on csstidy. If you want to create a linear or radial gradient as background or border, check our [CSS Gradient Generator](#).

Hey! You found this booklet interesting? Support Converting Colors with the new Membership Option!

The pro membership hides all ads, plus gives you double the colors in the color bucket, and more awesome pro features!

[Learn more, Memberships starting at \\$2.50/m!](#)

**Follow me
on Twitter!**

@ConvertingColor