

Converting Colors

$Y_{xy}(48.1290, 0.3426, 0.3292)$

Have a look what the booklet for
Yxy(48.1290, 0.3426, 0.3292)
contains.

Yxy(48.2805, 0.3430, 0.3303)	3
<i>Conversions</i>	4
<i>Details</i>	6
<i>Harmonies</i>	12
<i>Previews</i>	24
<i>Color Blindness Simulation</i>	27
<i>CSS Examples</i>	30

Color

Yxy(48.2805, 0.3430, 0.3303)

Conversions

Conversions Part 1

Format	Color
Hex	D2B1B0
RGB	210, 177, 176
RGB Percent	82%, 69%, 69%
CMY	0.1765, 0.3059, 0.3098
CMYK	0.00, 0.16, 0.16, 0.18
HSL	2°, 27%, 76%
HSV	2°, 16%, 82%
XYZ	50.1369, 48.2805, 47.7543
YIQ	186.7530, 19.9890, 6.6850

Conversions

Conversions Part 2

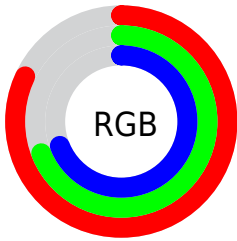
Format	Color
R_{YB}	210, 177, 176
Decimal	13808048
CIE _{Lab}	75.00, 11.75, 4.94
CIE _{LCh}	75, 12.746, 22.826
Yxy	48.2805, 0.3430, 0.3303
Android (android.graphics.Color)	4291998128 (0xFFD2B1B0)
YUV	186.7530, -5.3012, 20.3876
Hunter-Lab	69.4842, 7.2009, 7.8908

Details

The Yxy color **48.2805, 0.3430, 0.3303** is a light color, and the websafe version is hex **CC9999**. A complement of this color would be **59.4851, 0.2883, 0.3277**, and the grayscale version is **49.5709, 0.3127, 0.3290**.

A 20% lighter version of the original color is **85.3640, 0.3284, 0.3300**, and **22.8391, 0.3511, 0.3291** is the 20% darker color. If you saturate the color by 10%, you get **40.0544, 0.3678, 0.3312**, and if you desaturate by 10%, it is **57.8423, 0.3230, 0.3295**.

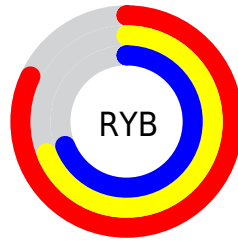
Distribution



Red (82%)

Green (69%)

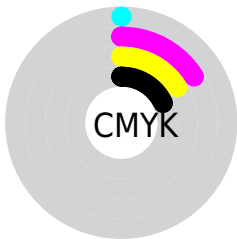
Blue (69%)



Red (82%)

Yellow (69%)

Blue (69%)

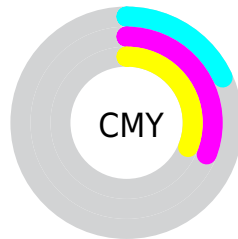


Cyan (0%)

Magenta (16%)

Yellow (16%)

Black (18%)



Cyan (18%)


Magenta (31%)


Yellow (31%)

Brightness & Saturation Gradients


These gradients show how the Yxy color 48.2805, 0.3430, 0.3303 changes by changing the brightness by 10 percent. The first figure shows a shift by +10% for each color and the second figure -10%.


Similar to the brightness gradients but the following saturation gradients show a change of the Yxy color 48.2805, 0.3430, 0.3303 by changing the saturation by 10% instead.


 48.2805, 0.3430,
0.3303

 48.2805, 0.3430,
0.3303


379.9029, 0.3279,
0.3298

 34.0491, 0.3468,
0.3304


 87.6219, 0.3375,
0.3302

 22.9313, 0.3516,
0.3304


113.5007, 0.3354,
0.3301

 14.5428, 0.3581,
0.3305


144.0306, 0.3337,
0.3300

 8.4991, 0.3671,
0.3304

179.5963, 0.3322,
0.3300

 4.4160, 0.3806,
0.3302

220.5819, 0.3309,
0.3299

 1.9089, 0.4029,
0.3292

267.3719, 0.3298,

 0.5537, 0.5007,

0.3299

0.3410

320.3508, 0.3288,
0.3299

0.0000, 0.0000,
0.0000

48.2805, 0.3430,
0.3303

48.2805, 0.3430,
0.3303

40.0544, 0.3678,
0.3312

57.8423, 0.3230,
0.3295

33.0984, 0.3985,
0.3321

68.7885, 0.3070,
0.3287

27.3512, 0.4356,
0.3329

81.1736, 0.2941,
0.3280

22.7438, 0.4788,
0.3336

92.4413, 0.2860,
0.3289

19.2005, 0.5257,
0.3338

■ 16.6361, 0.5716,
0.3336

■ 14.9526, 0.6093,
0.3327

■ 14.0313, 0.6325,
0.3314

■ 13.8351, 0.6383,
0.3314

Harmonies

Analogous

The Analogous color harmony consists of three colors that are next to each other on the color wheel.



48.2805, 0.3300, 0.3157



48.2805, 0.3430, 0.3303



48.2805, 0.3476, 0.3450

Triad

The Triadic color harmony groups three colors that are evenly spaced from another and form a triangle on the color wheel.



48.2805, 0.3430, 0.3303



48.2805, 0.3121, 0.3553



48.2805, 0.2834, 0.3019

Complementary

The Complementary color scheme is a pair of colors which are on the opposite of each other on the color wheel.



48.2805, 0.3430, 0.3303



59.4851, 0.2883, 0.3277

Split Complementary

Split-complementary colors differ from the complementary color scheme. The scheme consists of three colors, the original color and two neighbors of the complement color.



48.2805, 0.2790, 0.3115



48.2805, 0.3430, 0.3303



48.2805, 0.2953, 0.3428

Square

The Square scheme is like the rectangle color scheme, but the four colors are evenly spaced on the color wheel.



48.2805, 0.3430, 0.3303



48.2805, 0.3295, 0.3601



48.2805, 0.2833, 0.3265



48.2805, 0.2956, 0.2995

Rectangle

The Rectangle color scheme consists of four colors that form a rectangle on the color wheel.



48.2805, 0.3430, 0.3303



48.2805, 0.3453, 0.3530



48.2805, 0.2833, 0.3265



48.2805, 0.2810, 0.3043

Sweetspot

The Sweet Spot groups the original color and five complimentary colors.



48.2827, 0.3430, 0.3303



91.5623, 0.3210, 0.3294



49.3799, 0.3150, 0.2899



19.3538, 0.3223, 0.3294



0.0000, 0.0000, 0.0000



21.4041, 0.3127, 0.3290

Same Dimension

The Same Dimension uses a secret algorithm to generate beautiful new colors.



48.2827, 0.3430, 0.3303



70.8411, 0.3500, 0.3306



55.2284, 0.3398, 0.3501



11.8630, 0.3290, 0.3297



8.4650, 0.6377, 0.3319



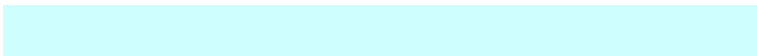
0.4933, 0.6300, 0.3380

Inverse Universe

The Inverse Universe completely reimagines the original color for something new.



59.4851, 0.2883, 0.3277



91.0367, 0.2840, 0.3274



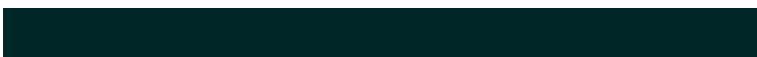
51.7753, 0.2875, 0.3070



13.3451, 0.2983, 0.3283



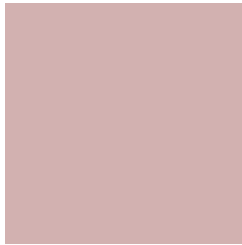
29.1609, 0.2222, 0.3198



1.6496, 0.2227, 0.3216

Previews

White Background



This preview shows how the Yxy color 48.2805, 0.3430, 0.3303 looks on a white background.

Color Contrast Check

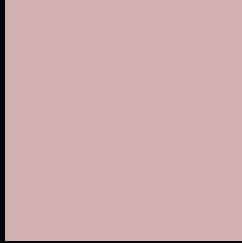
Large Text (above 18pt) WCAG AA × Fail

Any Text WCAG AA × Fail

Large Text (above 18pt) WCAG AAA × Fail

Any Text WCAG AAA × Fail

Black Background



This preview shows how the Yxy color 48.2805, 0.3430, 0.3303 looks on a black background.

Color Contrast Check

Large Text (above 18pt) WCAG AA ✓ Pass

Any Text WCAG AA ✓ Pass

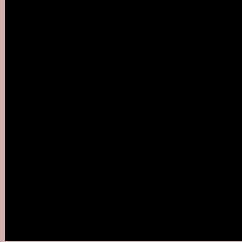
Large Text (above 18pt) WCAG AAA ✓ Pass

Any Text WCAG AAA ✓ Pass

If you want to check with other color combinations, try the [Color Contrast Checker](#).

Yxy 48.2805, 0.3430, 0.3303

Background



This preview shows how black text looks on a background with the Yxy color 48.2805, 0.3430, 0.3303.



This preview shows how white text looks on a background with the Yxy color 48.2805, 0.3430, 0.3303.

Color Blindness Simulation

Color vision deficiency is a very complex topic, and I could not describe the different causes any better than Wikipedia does, so if you want to learn more, you should check out their [article about color blindness](#).

Dichromacy



Original Color

48.2805, 0.3430, 0.3303

Protanopia

48.3951, 0.3201, 0.3341

Deuteranopia

48.4966, 0.3390, 0.3328



Tritanopia

48.3311, 0.3339, 0.3123

Trichromacy



Original Color

48.2805, 0.3430, 0.3303

Protanomaly

48.1727, 0.3282, 0.3316

Deuteranomaly

48.2408, 0.3401, 0.3315

Tritanomaly

48.3602, 0.3371, 0.3194

Monochromacy



Original Color

48.2805, 0.3430, 0.3303

Achromatopsia

49.6933, 0.3127, 0.3290

Achromatomaly

48.8880, 0.3230, 0.3290

CSS Examples

Text

The CSS property to change the color of the text to Yxy 48.2805, 0.3430, 0.3303 is called "color". The color property can be set on classes, ids or directly on the HTML element.

This example shows how text in the color `rgb(210, 177, 176)` looks like.

```
.text, #text, p{  
    color:rgb(210, 177, 176)  
}
```

If you want to add a text shadow in that color use the text-shadow property, you can generate a text shadow directly with our [CSS Text Shadow Generator](#).

Here you see how black text with a 4 pixel rgb(210, 177, 176) colored shadow looks like.

```
.shadow{ text-shadow: 4px 4px 2px rgb(210, 177, 176) }
```

Border

The CSS property to change the border of an element to Yxy 48.2805, 0.3430, 0.3303 is called "border". The border property can be set on classes, ids or directly on the HTML element.

This example shows the color as border, it can be applied via the CSS property "border" or "border-color".

```
.border, #border, table{ border:4px solid rgb(210, 177, 176) }
```

If only the border color should be changed use the property border-color.

```
.border{ border-color:rgb(210, 177, 176) }
```

If you want to add a box shadow in that color use:

Here you see how a box with a 4 pixel rgb(210, 177, 176) colored shadow looks like.

```
.boxshadow{ -moz-box-shadow:4px 4px 4px  
4px rgb(210, 177, 176); -webkit-box-  
shadow:4px 4px 4px 4px rgb(210, 177, 176);  
box-shadow:4px 4px 4px 4px rgb(210, 177,  
176) }
```


Background

The CSS property to change the background color of an element to Yxy 48.2805, 0.3430, 0.3303 is called "background". The background property can be set on classes, ids or directly on the HTML element.

```
.background, #background, body{  
background: rgb(210, 177, 176) }
```

If only the background color should be changed can be used:

```
.background{ background-color: rgb(210,  
177, 176) }
```

This example shows the color as background, it is applied via the CSS property "background".

To optimize and compress your CSS code, you can use our [online CSS compressor and optimizer](#) based on csstidy. If you want to create a linear or radial gradient as background or border, check our [CSS Gradient Generator](#).

Hey! You found this booklet interesting? Support Converting Colors with the new Membership Option!

The pro membership hides all ads, plus gives you double the colors in the color bucket, and more awesome pro features!

[Learn more, Memberships starting at \\$2.50/m!](#)

**Follow me
on Twitter!**

@ConvertingColor