

Converting Colors

$Yxy(48.1782, 0.3455, 0.3370)$

Have a look what the booklet for
Yxy(48.1782, 0.3455, 0.3370)
contains.

Yxy(48.1910, 0.3453, 0.3377)	3
<i>Conversions</i>	4
<i>Details</i>	6
<i>Harmonies</i>	12
<i>Previews</i>	24
<i>Color Blindness Simulation</i>	27
<i>CSS Examples</i>	30

Color

Yxy(48.1910, 0.3453, 0.3377)

Conversions

Conversions Part 1

Format	Color
Hex	D0B2AB
RGB	208, 178, 171
RGB Percent	82%, 70%, 67%
CMY	0.1845, 0.3019, 0.3294
CMYK	0.00, 0.14, 0.18, 0.18
HSL	11°, 28%, 74%
HSV	11°, 18%, 82%
XYZ	49.2755, 48.1910, 45.2370
YIQ	186.1720, 20.1270, 4.1830

Conversions

Conversions Part 2

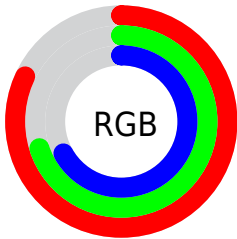
Format	Color
R _Y B	208, 180, 171
Decimal	13677227
CIE Lab	74.95, 9.66, 7.57
CIE LCh	75, 12.273, 38.059
Yxy	48.1910, 0.3453, 0.3377
Android (android.graphics.Color)	4291867307 (0xFFD0B2AB)
YUV	186.1720, -7.4798, 19.1432
Hunter-Lab	69.4197, 5.2184, 9.9578

Details

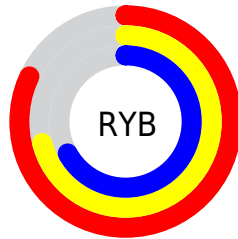
The Yxy color **48.1910, 0.3453, 0.3377** is a light color, and the websafe version is hex **CC9999**. A complement of this color would be **54.9609, 0.2857, 0.3201**, and the grayscale version is **49.2379, 0.3127, 0.3290**.

A 20% lighter version of the original color is **85.5966, 0.3322, 0.3370**, and **22.7714, 0.3544, 0.3390** is the 20% darker color. If you saturate the color by 10%, you get **41.1616, 0.3691, 0.3430**, and if you desaturate by 10%, it is **56.1732, 0.3256, 0.3327**.

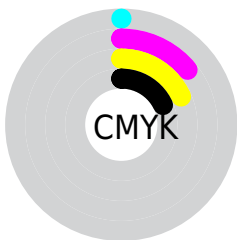
Distribution



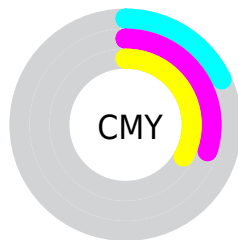
- Red (82%)
- Green (70%)
- Blue (67%)



- Red (82%)
- Yellow (71%)
- Blue (67%)



- Cyan (0%)
- Magenta (14%)
- Yellow (18%)
- Black (18%)





- Cyan (18%)
- Magenta (30%)
- Yellow (33%)

Brightness & Saturation Gradients


These gradients show how the Yxy color 48.1910, 0.3453, 0.3377 changes by changing the brightness by 10 percent. The first figure shows a shift by +10% for each color and the second figure -10%.


Similar to the brightness gradients but the following saturation gradients show a change of the Yxy color 48.1910, 0.3453, 0.3377 by changing the saturation by 10% instead.


 48.1910, 0.3453,
0.3377

 48.1910, 0.3453,
0.3377


379.5487, 0.3290,
0.3336

 33.9782, 0.3494,
0.3387


 87.4887, 0.3394,
0.3363

 22.8768, 0.3546,
0.3398


113.3424, 0.3371,
0.3357

 14.5026, 0.3616,
0.3414


143.8451, 0.3353,
0.3352

 8.4710, 0.3713,
0.3433

179.3813, 0.3336,
0.3348

 4.3978, 0.3859,
0.3460

220.3354, 0.3323,
0.3344

 1.8985, 0.4098,
0.3496

267.0917, 0.3310,

 0.5475, 0.5517,

0.3341

0.3994

320.0347, 0.3300,
0.3338

0.0000, 0.0000,
0.0000

48.1910, 0.3453,
0.3377

48.1910, 0.3453,
0.3377

41.1616, 0.3691,
0.3430

56.1732, 0.3256,
0.3327

35.0431, 0.3976,
0.3483

65.1355, 0.3094,
0.3280

29.7997, 0.4312,
0.3531

75.1119, 0.2959,
0.3237

25.3910, 0.4696,
0.3570

86.1330, 0.2848,
0.3198

21.7734, 0.5110,
0.3590

92.1440, 0.2849,
0.3289

■ 18.8989, 0.5524,
0.3582

■ 16.7145, 0.5887,
0.3540

■ 15.1575, 0.6156,
0.3469

■ 14.8849, 0.6206,
0.3454

Harmonies

Analogous

The Analogous color harmony consists of three colors that are next to each other on the color wheel.



48.1910, 0.3366, 0.3231



48.1910, 0.3453, 0.3377



48.1910, 0.3450, 0.3505

Triad

The Triadic color harmony groups three colors that are evenly spaced from another and form a triangle on the color wheel.



48.1910, 0.3453, 0.3377



48.1910, 0.3036, 0.3489



48.1910, 0.2896, 0.3007

Complementary

The Complementary color scheme is a pair of colors which are on the opposite of each other on the color wheel.



48.1910, 0.3453, 0.3377



54.9609, 0.2857, 0.3201

Split Complementary

Split-complementary colors differ from the complementary color scheme. The scheme consists of three colors, the original color and two neighbors of the complement color.



48.1910, 0.2813, 0.3066



48.1910, 0.3453, 0.3377



48.1910, 0.2892, 0.3345

Square

The Square scheme is like the rectangle color scheme, but the four colors are evenly spaced on the color wheel.



48.1910, 0.3453, 0.3377



48.1910, 0.3206, 0.3576



48.1910, 0.2812, 0.3189



48.1910, 0.3042, 0.3022

Rectangle

The Rectangle color scheme consists of four colors that form a rectangle on the color wheel.



48.1910, 0.3453, 0.3377



48.1910, 0.3398, 0.3563



48.1910, 0.2812, 0.3189



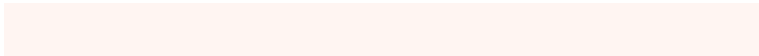
48.1910, 0.2860, 0.3019

Sweetspot

The Sweet Spot groups the original color and five complimentary colors.



48.1932, 0.3453, 0.3377



92.7904, 0.3209, 0.3314



46.7593, 0.3204, 0.2930



19.6510, 0.3221, 0.3317



0.0000, 0.0000, 0.0000



21.4041, 0.3127, 0.3290

Same Dimension

The Same Dimension uses a secret algorithm to generate beautiful new colors.



48.1932, 0.3453, 0.3377



72.3899, 0.3531, 0.3395



55.9413, 0.3415, 0.3595



12.1660, 0.3286, 0.3335



9.3869, 0.6185, 0.3471



0.6353, 0.5839, 0.3745

Inverse Universe

The Inverse Universe completely reimagines the original color for something new.



54.9609, 0.2857, 0.3201



84.9087, 0.2806, 0.3182



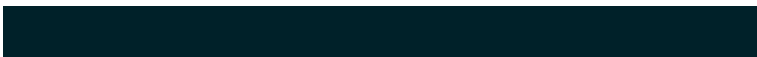
46.9588, 0.2845, 0.2966



13.0099, 0.2983, 0.3245



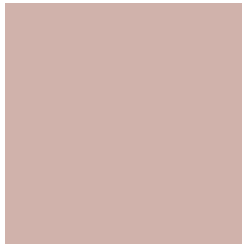
20.5517, 0.2077, 0.2675



1.2497, 0.2111, 0.2800

Previews

White Background



This preview shows how the Yxy color 48.1910, 0.3453, 0.3377 looks on a white background.

Color Contrast Check

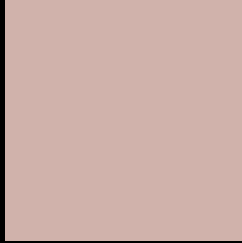
Large Text (above 18pt) WCAG AA × Fail

Any Text WCAG AA × Fail

Large Text (above 18pt) WCAG AAA × Fail

Any Text WCAG AAA × Fail

Black Background



This preview shows how the Yxy color 48.1910, 0.3453, 0.3377 looks on a black background.

Color Contrast Check

Large Text (above 18pt) WCAG AA ✓ Pass

Any Text WCAG AA ✓ Pass

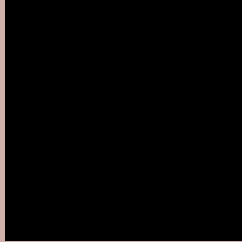
Large Text (above 18pt) WCAG AAA ✓ Pass

Any Text WCAG AAA ✓ Pass

If you want to check with other color combinations, try the [Color Contrast Checker](#).

Yxy 48.1910, 0.3453, 0.3377

Background



This preview shows how black text looks on a background with the Yxy color 48.1910, 0.3453, 0.3377.



This preview shows how white text looks on a background with the Yxy color 48.1910, 0.3453, 0.3377.

Color Blindness Simulation

Color vision deficiency is a very complex topic, and I could not describe the different causes any better than Wikipedia does, so if you want to learn more, you should check out their [article about color blindness](#).

Dichromacy



Original Color

48.1910, 0.3453, 0.3377

Protanopia

48.2841, 0.3258, 0.3419

Deuteranopia

48.1910, 0.3453, 0.3377



Tritanopia

48.0357, 0.3321, 0.3122

Trichromacy



Original Color

48.1910, 0.3453, 0.3377

Protanomaly

48.3433, 0.3330, 0.3404

Deuteranomaly

48.1910, 0.3453, 0.3377

Tritanomaly

47.9834, 0.3371, 0.3218

Monochromacy



Original Color

48.1910, 0.3453, 0.3377

Achromatopsia

49.1021, 0.3127, 0.3290

Achromatomaly

48.6725, 0.3237, 0.3316

CSS Examples

Text

The CSS property to change the color of the text to Yxy 48.1910, 0.3453, 0.3377 is called "color". The color property can be set on classes, ids or directly on the HTML element.

This example shows how text in the color `rgb(208, 178, 171)` looks like.

```
.text, #text, p{  
    color:rgb(208, 178, 171)  
}
```

If you want to add a text shadow in that color use the text-shadow property, you can generate a text shadow directly with our [CSS Text Shadow Generator](#).

Here you see how black text with a 4 pixel rgb(208, 178, 171) colored shadow looks like.

```
.shadow{ text-shadow: 4px 4px 2px rgb(208, 178, 171) }
```

Border

The CSS property to change the border of an element to Yxy 48.1910, 0.3453, 0.3377 is called "border". The border property can be set on classes, ids or directly on the HTML element.

This example shows the color as border, it can be applied via the CSS property "border" or "border-color".

```
.border, #border, table{ border:4px solid rgb(208, 178, 171) }
```

If only the border color should be changed use the property `border-color`.

```
.border{ border-color:rgb(208, 178, 171) }
```

If you want to add a box shadow in that color use:

Here you see how a box with a 4 pixel `rgb(208, 178, 171)` colored shadow looks like.

```
.boxshadow{ -moz-box-shadow:4px 4px 4px  
4px rgb(208, 178, 171); -webkit-box-  
shadow:4px 4px 4px 4px rgb(208, 178, 171);  
box-shadow:4px 4px 4px 4px rgb(208, 178,  
171) }
```


Background

The CSS property to change the background color of an element to Yxy 48.1910, 0.3453, 0.3377 is called "background". The background property can be set on classes, ids or directly on the HTML element.

```
.background, #background, body{  
background: rgb(208, 178, 171) }
```

If only the background color should be changed can be used:

```
.background{ background-color: rgb(208,  
178, 171) }
```

This example shows the color as background, it is applied via the CSS property "background".

To optimize and compress your CSS code, you can use our [online CSS compressor and optimizer](#) based on csstidy. If you want to create a linear or radial gradient as background or border, check our [CSS Gradient Generator](#).

Hey! You found this booklet interesting? Support Converting Colors with the new Membership Option!

The pro membership hides all ads, plus gives you double the colors in the color bucket, and more awesome pro features!

[Learn more, Memberships starting at \\$2.50/m!](#)

**Follow me
on Twitter!**

@ConvertingColor