

Converting Colors

$Y_{xy}(48.1830, 0.3545, 0.3419)$

Have a look what the booklet for
Yxy(48.1830, 0.3545, 0.3419)
contains.

Yxy(48.3436, 0.3545, 0.3425)	3
<i>Conversions</i>	4
<i>Details</i>	6
<i>Harmonies</i>	12
<i>Previews</i>	24
<i>Color Blindness Simulation</i>	27
<i>CSS Examples</i>	30

Color

Yxy(48.3436, 0.3545, 0.3425)

Conversions

Conversions Part 1

Format	Color
Hex	D5B1A6
RGB	213, 177, 166
RGB Percent	84%, 69%, 65%
CMY	0.1648, 0.3058, 0.3490
CMYK	0.00, 0.17, 0.22, 0.16
HSL	14°, 36%, 74%
HSV	14°, 22%, 84%
XYZ	50.0374, 48.3436, 42.7682
YIQ	186.5100, 24.9870, 4.2110

Conversions

Conversions Part 2

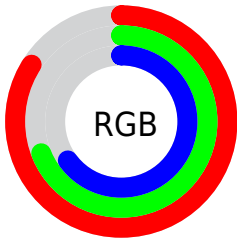
Format	Color
RYB	213, 180, 166
Decimal	14004646
CIELab	75.04, 11.31, 10.50
CIELCh	75, 15.430, 42.867
Yxy	48.3436, 0.3545, 0.3425
Android (android.graphics.Color)	4292194726 (0xFFD5B1A6)
YUV	186.5100, -10.1114, 23.2317
Hunter-Lab	69.5296, 6.7819, 12.2009

Details

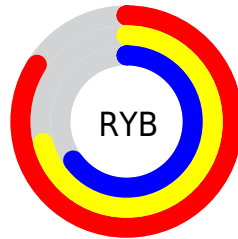
The Yxy color $48.3436, 0.3545, 0.3425$ is a light color, and the websafe version is hex $CC9999$. A complement of this color would be $55.1222, 0.2791, 0.3151$, and the grayscale version is $49.4506, 0.3127, 0.3290$.

A 20% lighter version of the original color is $84.7583, 0.3357, 0.3410$, and $22.8993, 0.3672, 0.3454$ is the 20% darker color. If you saturate the color by 10%, you get $41.5683, 0.3797, 0.3490$, and if you desaturate by 10%, it is $56.0218, 0.3334, 0.3362$.

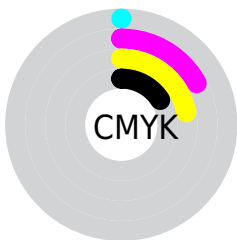
Distribution



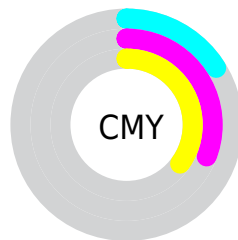
- Red (84%)
- Green (69%)
- Blue (65%)



- Red (84%)
- Yellow (71%)
- Blue (65%)



- Cyan (0%)
- Magenta (17%)
- Yellow (22%)
- Black (16%)




- Cyan (16%)
- Magenta (31%)
- Yellow (35%)

Brightness & Saturation Gradients


These gradients show how the Yxy color 48.3436, 0.3545, 0.3425 changes by changing the brightness by 10 percent. The first figure shows a shift by +10% for each color and the second figure -10%.


Similar to the brightness gradients but the following saturation gradients show a change of the Yxy color 48.3436, 0.3545, 0.3425 by changing the saturation by 10% instead.


 48.3436, 0.3545,
0.3425

 48.3436, 0.3545,
0.3425


380.1525, 0.3336,
0.3361

 34.0991, 0.3597,
0.3440


 87.7158, 0.3469,
0.3403

 22.9697, 0.3664,
0.3458


 113.6122, 0.3440,
0.3394

 14.5711, 0.3754,
0.3481


144.1614, 0.3416,
0.3387

 8.5190, 0.3878,
0.3511

179.7477, 0.3396,
0.3380

 4.4288, 0.4063,
0.3550

220.7556, 0.3378,
0.3375

 1.9162, 0.4364,
0.3600

267.5694, 0.3362,

 0.5581, 0.5910,

0.3370

0.4090

320.5736, 0.3348,
0.3365

0.0000, 0.0000,
0.0000

48.3436, 0.3545,
0.3425

48.3436, 0.3545,
0.3425

41.5683, 0.3797,
0.3490

56.0218, 0.3334,
0.3362

35.6559, 0.4094,
0.3554

64.6277, 0.3159,
0.3302

30.5731, 0.4438,
0.3611

74.1936, 0.3014,
0.3247

26.2821, 0.4820,
0.3652

84.7481, 0.2892,
0.3196

22.7418, 0.5221,
0.3668

92.8807, 0.2877,
0.3289

■ 19.9073, 0.5605,
0.3647

■ 17.7284, 0.5928,
0.3586

■ 16.4203, 0.6124,
0.3520

Harmonies

Analogous

The Analogous color harmony consists of three colors that are next to each other on the color wheel.



48.3436, 0.3451, 0.3244



48.3436, 0.3545, 0.3425



48.3436, 0.3522, 0.3579

Triad

The Triadic color harmony groups three colors that are evenly spaced from another and form a triangle on the color wheel.



48.3436, 0.3545, 0.3425



48.3436, 0.2979, 0.3516



48.3436, 0.2862, 0.2934

Complementary

The Complementary color scheme is a pair of colors which are on the opposite of each other on the color wheel.



48.3436, 0.3545, 0.3425



55.1222, 0.2791, 0.3151

Split Complementary

Split-complementary colors differ from the complementary color scheme. The scheme consists of three colors, the original color and two neighbors of the complement color.



48.3436, 0.2745, 0.2991



48.3436, 0.3545, 0.3425



48.3436, 0.2811, 0.3325

Square

The Square scheme is like the rectangle color scheme, but the four colors are evenly spaced on the color wheel.



48.3436, 0.3545, 0.3425



48.3436, 0.3191, 0.3641



48.3436, 0.2727, 0.3132



48.3436, 0.3053, 0.2967

Rectangle

The Rectangle color scheme consists of four colors that form a rectangle on the color wheel.



48.3436, 0.3545, 0.3425



48.3436, 0.3444, 0.3645



48.3436, 0.2727, 0.3132



48.3436, 0.2814, 0.2943

Sweetspot

The Sweet Spot groups the original color and five complimentary colors.



48.3458, 0.3545, 0.3425



90.4949, 0.3243, 0.3331



45.6765, 0.3246, 0.2866



19.2014, 0.3254, 0.3335



0.0000, 0.0000, 0.0000



21.4041, 0.3127, 0.3290

Same Dimension

The Same Dimension uses a secret algorithm to generate beautiful new colors.



48.3458, 0.3545, 0.3425



68.2307, 0.3646, 0.3453



58.4060, 0.3487, 0.3698



12.8892, 0.3285, 0.3345



10.1653, 0.6100, 0.3538



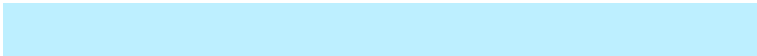
0.7420, 0.5758, 0.3810

Inverse Universe

The Inverse Universe completely reimagines the original color for something new.



55.1222, 0.2791, 0.3151



79.9913, 0.2729, 0.3121



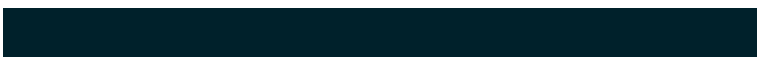
44.9575, 0.2769, 0.2845



13.5908, 0.2982, 0.3234



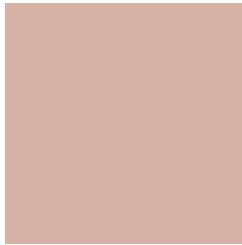
19.1007, 0.2033, 0.2518



1.2745, 0.2074, 0.2667

Previews

White Background



This preview shows how the Yxy color 48.3436, 0.3545, 0.3425 looks on a white background.

Color Contrast Check

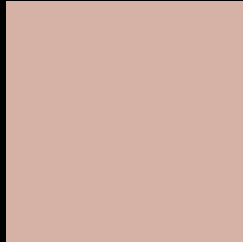
Large Text (above 18pt) WCAG AA × Fail

Any Text WCAG AA × Fail

Large Text (above 18pt) WCAG AAA × Fail

Any Text WCAG AAA × Fail

Black Background



This preview shows how the Yxy color 48.3436, 0.3545, 0.3425 looks on a black background.

Color Contrast Check

Large Text (above 18pt) WCAG AA ✓ Pass

Any Text WCAG AA ✓ Pass

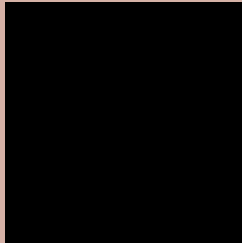
Large Text (above 18pt) WCAG AAA ✓ Pass

Any Text WCAG AAA ✓ Pass

If you want to check with other color combinations, try the [Color Contrast Checker](#).

Yxy 48.3436, 0.3545, 0.3425

Background



This preview shows how black text looks on a background with the Yxy color 48.3436, 0.3545, 0.3425.



This preview shows how white text looks on a background with the Yxy color 48.3436, 0.3545, 0.3425.

Color Blindness Simulation

Color vision deficiency is a very complex topic, and I could not describe the different causes any better than Wikipedia does, so if you want to learn more, you should check out their [article about color blindness](#).

Dichromacy



Original Color

48.3436, 0.3545, 0.3425

Protanopia

48.3897, 0.3308, 0.3470

Deuteranopia

48.2956, 0.3515, 0.3438



Tritanopia

48.4589, 0.3393, 0.3137

Trichromacy



Original Color

48.3436, 0.3545, 0.3425

Protanomaly

48.1917, 0.3392, 0.3442

Deuteranomaly

48.4428, 0.3525, 0.3438

Tritanomaly

48.3617, 0.3453, 0.3243

Monochromacy



Original Color

48.3436, 0.3545, 0.3425

Achromatopsia

49.6933, 0.3127, 0.3290

Achromatomaly

48.8574, 0.3271, 0.3341

CSS Examples

Text

The CSS property to change the color of the text to Yxy 48.3436, 0.3545, 0.3425 is called "color". The color property can be set on classes, ids or directly on the HTML element.

This example shows how text in the color `rgb(213, 177, 166)` looks like.

```
.text, #text, p{  
    color:rgb(213, 177, 166)  
}
```

If you want to add a text shadow in that color use the text-shadow property, you can generate a text shadow directly with our [CSS Text Shadow Generator](#).

Here you see how black text with a 4 pixel rgb(213, 177, 166) colored shadow looks like.

```
.shadow{ text-shadow: 4px 4px 2px rgb(213, 177, 166) }
```

Border

The CSS property to change the border of an element to Yxy 48.3436, 0.3545, 0.3425 is called "border". The border property can be set on classes, ids or directly on the HTML element.

This example shows the color as border, it can be applied via the CSS property "border" or "border-color".

```
.border, #border, table{ border:4px solid rgb(213, 177, 166) }
```

If only the border color should be changed use the property `border-color`.

```
.border{ border-color:rgb(213, 177, 166) }
```

If you want to add a box shadow in that color use:

Here you see how a box with a 4 pixel `rgb(213, 177, 166)` colored shadow looks like.

```
.boxshadow{ -moz-box-shadow:4px 4px 4px  
4px rgb(213, 177, 166); -webkit-box-  
shadow:4px 4px 4px 4px rgb(213, 177, 166);  
box-shadow:4px 4px 4px 4px rgb(213, 177,  
166) }
```


Background

The CSS property to change the background color of an element to Yxy 48.3436, 0.3545, 0.3425 is called "background". The background property can be set on classes, ids or directly on the HTML element.

```
.background, #background, body{  
background: rgb(213, 177, 166) }
```

If only the background color should be changed can be used:

```
.background{ background-color: rgb(213,  
177, 166) }
```

This example shows the color as background, it is applied via the CSS property "background".

To optimize and compress your CSS code, you can use our [online CSS compressor and optimizer](#) based on csstidy. If you want to create a linear or radial gradient as background or border, check our [CSS Gradient Generator](#).

Hey! You found this booklet interesting? Support Converting Colors with the new Membership Option!

The pro membership hides all ads, plus gives you double the colors in the color bucket, and more awesome pro features!

[Learn more, Memberships starting at \\$2.50/m!](#)

**Follow me
on Twitter!**

@ConvertingColor