

# Converting Colors

$Yxy(48.1970, 0.3416, 0.3266)$

Have a look what the booklet for  
Yxy(48.1970, 0.3416, 0.3266)  
contains.

<b>Yxy(48.1139, 0.3424, 0.3267)</b> .....	3
<b><i>Conversions</i></b> .....	4
<b><i>Details</i></b> .....	6
<b><i>Harmonies</i></b> .....	12
<b><i>Previews</i></b> .....	24
<b><i>Color Blindness Simulation</i></b> .....	27
<b><i>CSS Examples</i></b> .....	30

# Color

**Yxy(48.1139, 0.3424, 0.3267)**

# Conversions

## Conversions Part 1

Format	Color
Hex	D3B0B2
RGB	211, 176, 178
RGB Percent	83%, 69%, 70%
CMY	0.1725, 0.3098, 0.3021
CMYK	0.00, 0.17, 0.16, 0.17
HSL	357°, 28%, 76%
HSV	357°, 17%, 83%
XYZ	50.4261, 48.1139, 48.7324
YIQ	186.6930, 20.2180, 8.0420

# Conversions

## Conversions Part 2

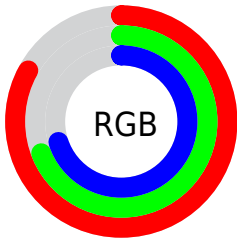
<b>Format</b>	<b>Color</b>
R <sub>Y</sub> B	211, 176, 178
Decimal	13873330
CIE <sub>Lab</sub>	74.90, 12.97, 3.73
CIE <sub>LCh</sub>	75, 13.501, 16.053
Y <sub>xy</sub>	48.1139, 0.3424, 0.3267
Android (android.graphics.Color)	4292063410 (0xFFD3B0B2)
YUV	186.6930, -4.2856, 21.3172
Hunter-Lab	69.3642, 8.3778, 6.9002

# Details

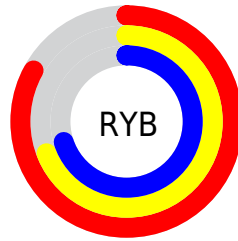
The Yxy color  $48.1139, 0.3424, 0.3267$  is a light color, and the websafe version is hex  $CC9999$ . A complement of this color would be  $60.4330, 0.2890, 0.3313$ , and the grayscale version is  $49.5292, 0.3127, 0.3290$ .

A 20% lighter version of the original color is  $84.9137, 0.3272, 0.3271$ , and  $22.7145, 0.3514, 0.3259$  is the 20% darker color. If you saturate the color by 10%, you get  $39.7315, 0.3663, 0.3252$ , and if you desaturate by 10%, it is  $57.9030, 0.3232, 0.3281$ .

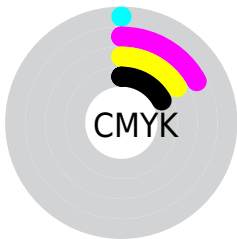
# Distribution



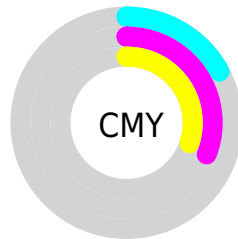
- Red (83%)
- Green (69%)
- Blue (70%)



- Red (83%)
- Yellow (69%)
- Blue (70%)



- Cyan (0%)
- Magenta (17%)
- Yellow (16%)
- Black (17%)




- Cyan (17%)
- Magenta (31%)
- Yellow (30%)


# Brightness & Saturation Gradients

These gradients show how the Yxy color 48.1139, 0.3424, 0.3267 changes by changing the brightness by 10 percent. The first figure shows a shift by +10% for each color and the second figure -10%.


Similar to the brightness gradients but the following saturation gradients show a change of the Yxy color 48.1139, 0.3424, 0.3267 by changing the saturation by 10% instead.





 48.1139, 0.3424,  
0.3267

 48.1139, 0.3424,  
0.3267


379.2434, 0.3276,  
0.3280

 33.9171, 0.3461,  
0.3263


 87.3740, 0.3370,  
0.3272

 22.8299, 0.3509,  
0.3259


113.2060, 0.3350,  
0.3274

 14.4680, 0.3572,  
0.3252


143.6853, 0.3333,  
0.3275

 8.4469, 0.3661,  
0.3242

179.1961, 0.3318,  
0.3276

 4.3822, 0.3793,  
0.3225

220.1230, 0.3305,  
0.3277

 1.8896, 0.4011,  
0.3193

266.8502, 0.3294,

 0.5421, 0.4884,

0.3278

0.3183

319.7622, 0.3284,  
0.3279

0.0000, 0.0000,  
0.0000

48.1139, 0.3424,  
0.3267

48.1139, 0.3424,  
0.3267

39.7315, 0.3663,  
0.3252

57.9030, 0.3232,  
0.3281

32.6850, 0.3959,  
0.3238

69.1524, 0.3079,  
0.3294

26.9075, 0.4318,  
0.3225

81.9208, 0.2955,  
0.3306

22.3234, 0.4737,  
0.3216

92.5913, 0.2866,  
0.3289

18.8494, 0.5197,  
0.3214

■ 16.3913, 0.5654,  
0.3222

■ 14.8393, 0.6040,  
0.3242

■ 14.0532, 0.6293,  
0.3268

■ 13.8775, 0.6350,  
0.3272

# Harmonies

## Analogous

The Analogous color harmony consists of three colors that are next to each other on the color wheel.



48.1139, 0.3271, 0.3118



48.1139, 0.3424, 0.3267



48.1139, 0.3496, 0.3426

# Triad

The Triadic color harmony groups three colors that are evenly spaced from another and form a triangle on the color wheel.



48.1139, 0.3424, 0.3267



48.1139, 0.3163, 0.3589



48.1139, 0.2799, 0.3019

# Complementary

The Complementary color scheme is a pair of colors which are on the opposite of each other on the color wheel.



48.1139, 0.3424, 0.3267



60.4330, 0.2890, 0.3313

# Split Complementary

Split-complementary colors differ from the complementary color scheme. The scheme consists of three colors, the original color and two neighbors of the complement color.



48.1139, 0.2772, 0.3137



48.1139, 0.3424, 0.3267



48.1139, 0.2979, 0.3471

# Square

The Square scheme is like the rectangle color scheme, but the four colors are evenly spaced on the color wheel.



48.1139, 0.3424, 0.3267



48.1139, 0.3342, 0.3618



48.1139, 0.2838, 0.3303



48.1139, 0.2910, 0.2976



# Rectangle

The Rectangle color scheme consists of four colors that form a rectangle on the color wheel.



48.1139, 0.3424, 0.3267



48.1139, 0.3486, 0.3518



48.1139, 0.2838, 0.3303



48.1139, 0.2780, 0.3051

# Sweetspot

The Sweet Spot groups the original color and five complimentary colors.



48.1161, 0.3424, 0.3267



91.3822, 0.3206, 0.3283



49.2646, 0.3127, 0.2880



19.3103, 0.3218, 0.3282



0.0000, 0.0000, 0.0000



21.4041, 0.3127, 0.3290



# Same Dimension

The Same Dimension uses a secret algorithm to generate beautiful new colors.



48.1161, 0.3424, 0.3267



68.9442, 0.3505, 0.3262



54.3241, 0.3412, 0.3472



11.8189, 0.3282, 0.3277



8.3785, 0.6335, 0.3263



0.4723, 0.6127, 0.3149



# Inverse Universe

The Inverse Universe completely reimagines the original color for something new.



48.1161, 0.3424, 0.3267



68.9442, 0.3505, 0.3262



53.3437, 0.2870, 0.3101



11.8189, 0.3282, 0.3277



8.3785, 0.6335, 0.3263

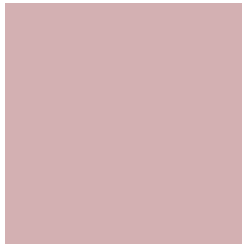


0.4723, 0.6127, 0.3149



# Previews

## White Background



This preview shows how the Yxy color 48.1139, 0.3424, 0.3267 looks on a white background.

## Color Contrast Check

Large Text (above 18pt) WCAG AA × Fail

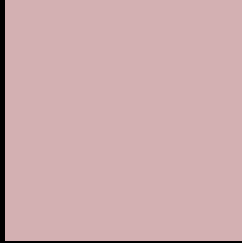
Any Text WCAG AA × Fail

Large Text (above 18pt) WCAG AAA × Fail

Any Text WCAG AAA × Fail



# Black Background



This preview shows how the Yxy color 48.1139, 0.3424, 0.3267 looks on a black background.

## Color Contrast Check

Large Text (above 18pt) WCAG AA ✓ Pass

Any Text WCAG AA ✓ Pass

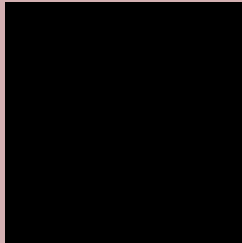
Large Text (above 18pt) WCAG AAA ✓ Pass

Any Text WCAG AAA ✓ Pass

If you want to check with other color combinations, try the [Color Contrast Checker](#).

**Yxy 48.1139, 0.3424, 0.3267**

## **Background**



This preview shows how black text looks on a background with the Yxy color 48.1139, 0.3424, 0.3267.



This preview shows how white text looks on a background with the Yxy color 48.1139, 0.3424, 0.3267.

# Color Blindness Simulation

Color vision deficiency is a very complex topic, and I could not describe the different causes any better than Wikipedia does, so if you want to learn more, you should check out their [article about color blindness](#).

## Dichromacy



### Original Color

48.1139, 0.3424, 0.3267

### Protanopia

48.3497, 0.3177, 0.3316

### Deuteranopia

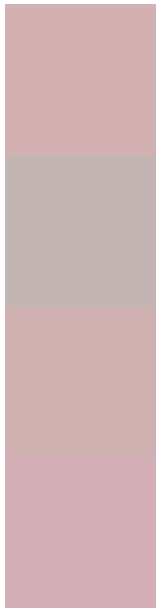
48.0343, 0.3366, 0.3291



## Tritanopia

47.9000, 0.3349, 0.3123

# Trichromacy



## Original Color

48.1139, 0.3424, 0.3267

## Protanomaly

48.1197, 0.3257, 0.3290

## Deuteranomaly

47.9240, 0.3386, 0.3279

## Tritanomaly

48.1177, 0.3382, 0.3183

# Monochromacy



## Original Color

48.1139, 0.3424, 0.3267

## Achromatopsia

49.6933, 0.3127, 0.3290

## Achromatomaly

49.0634, 0.3230, 0.3278

# CSS Examples

## Text

The CSS property to change the color of the text to Yxy 48.1139, 0.3424, 0.3267 is called "color". The color property can be set on classes, ids or directly on the HTML element.

This example shows how text in the color `rgb(211, 176, 178)` looks like.

```
.text, #text, p{  
    color:rgb(211, 176, 178)  
}
```

If you want to add a text shadow in that color use the text-shadow property, you can generate a text shadow directly with our [CSS Text Shadow Generator](#).

Here you see how black text with a 4 pixel rgb(211, 176, 178) colored shadow looks like.

```
.shadow{ text-shadow: 4px 4px 2px rgb(211, 176, 178) }
```

## Border

The CSS property to change the border of an element to Yxy 48.1139, 0.3424, 0.3267 is called "border". The border property can be set on classes, ids or directly on the HTML element.

This example shows the color as border, it can be applied via the CSS property "border" or "border-color".

```
.border, #border, table{ border:4px solid rgb(211, 176, 178) }
```

If only the border color should be changed use the property `border-color`.

```
.border{ border-color:rgb(211, 176, 178) }
```

If you want to add a box shadow in that color use:

Here you see how a box with a 4 pixel `rgb(211, 176, 178)` colored shadow looks like.

```
.boxshadow{ -moz-box-shadow:4px 4px 4px  
4px rgb(211, 176, 178); -webkit-box-  
shadow:4px 4px 4px 4px rgb(211, 176, 178);  
box-shadow:4px 4px 4px 4px rgb(211, 176,  
178) }
```



# Background

The CSS property to change the background color of an element to Yxy 48.1139, 0.3424, 0.3267 is called "background". The background property can be set on classes, ids or directly on the HTML element.

```
.background, #background, body{  
background: rgb(211, 176, 178) }
```

If only the background color should be changed can be used:

```
.background{ background-color: rgb(211,  
176, 178) }
```

This example shows the color as background, it is applied via the CSS property "background".

To optimize and compress your CSS code, you can use our [online CSS compressor and optimizer](#) based on csstidy. If you want to create a linear or radial gradient as background or border, check our [CSS Gradient Generator](#).

Hey! You found this booklet interesting? Support Converting Colors with the new Membership Option!

The pro membership hides all ads, plus gives you double the colors in the color bucket, and more awesome pro features!

**[Learn more, Memberships starting at \\$2.50/m!](#)**

**Follow me  
on Twitter!**

@ConvertingColor