

Converting Colors

$Y_{xy}(48.2574, 0.3287, 0.3229)$

Have a look what the booklet for
Yxy(48.2574, 0.3287, 0.3229)
contains.

| | |
|---|----|
| Yxy(48.2574, 0.3287, 0.3229) | 3 |
| Conversions | 4 |
| Details | 6 |
| Harmonies | 12 |
| Previews | 24 |
| Color Blindness Simulation | 27 |
| CSS Examples | 30 |

Color

Yxy(48.2574, 0.3287, 0.3229)

Conversions

Conversions Part 1

| Format | Color |
|-------------|---------------------------|
| Hex | CAB3B8 |
| RGB | 202, 179, 184 |
| RGB Percent | 79%, 70%, 72% |
| CMY | 0.2079, 0.2980, 0.2785 |
| CMYK | 0.00, 0.11, 0.09, 0.21 |
| HSL | 347°, 18%, 75% |
| HSV | 347°, 11%, 79% |
| XYZ | 49.1242, 48.2574, 52.0684 |
| YIQ | 186.4470, 12.1030, 6.4310 |

Conversions

Conversions Part 2

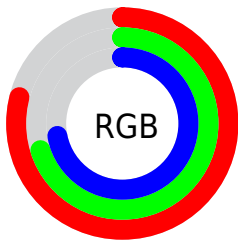
| Format | Color |
|-------------------------------------|-------------------------------|
| R _Y B | 202, 179, 184 |
| Decimal | 13284280 |
| CIE Lab | 74.99, 9.07, 0.47 |
| CIE LCh | 75, 9.084, 2.997 |
| Yxy | 48.2574, 0.3287, 0.3229 |
| Android (android.graphics.Color) | 4291474360 (0xFFCAB3B8) |
| YUV | 186.4470, -1.2064, 13.6400 |
| Hunter-Lab | 69.4675, 4.6587, 4.1873 |

Details

The Yxy color $48.2574, 0.3287, 0.3229$ is a light color, and the websafe version is hex `CCCCCC`. A complement of this color would be $55.8485, 0.2988, 0.3352$, and the grayscale version is $49.3682, 0.3127, 0.3290$.

A 20% lighter version of the original color is $86.9679, 0.3231, 0.3241$, and $22.8563, 0.3336, 0.3208$ is the 20% darker color. If you saturate the color by 10%, you get $40.1201, 0.3463, 0.3172$, and if you desaturate by 10%, it is $57.6591, 0.3144, 0.3283$.

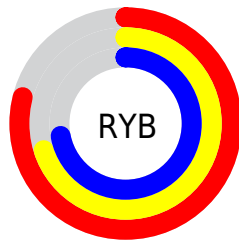
Distribution



Red (79%)

Green (70%)

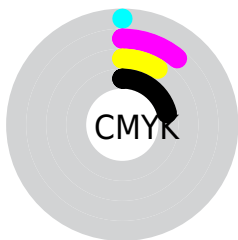
Blue (72%)



Red (79%)

Yellow (70%)

Blue (72%)

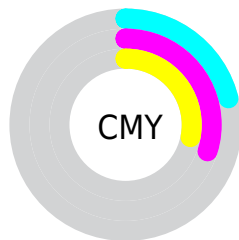


Cyan (0%)

Magenta (11%)

Yellow (9%)

Black (21%)



Cyan (21%)


Magenta (30%)

Yellow (28%)

Brightness & Saturation Gradients


These gradients show how the Yxy color 48.2574, 0.3287, 0.3229 changes by changing the brightness by 10 percent. The first figure shows a shift by +10% for each color and the second figure -10%.


Similar to the brightness gradients but the following saturation gradients show a change of the Yxy color 48.2574, 0.3287, 0.3229 by changing the saturation by 10% instead.


 48.2574, 0.3287,
0.3229

 48.2574, 0.3287,
0.3229


379.8115, 0.3207,
0.3260

 34.0308, 0.3307,
0.3221


 87.5875, 0.3258,
0.3240

 22.9172, 0.3332,
0.3212


113.4598, 0.3247,
0.3244

 14.5324, 0.3366,
0.3199


143.9828, 0.3238,
0.3248

 8.4919, 0.3413,
0.3180

179.5408, 0.3230,
0.3251

 4.4113, 0.3483,
0.3153

220.5183, 0.3223,
0.3253

 1.9062, 0.3598,
0.3108

267.2996, 0.3217,

 0.5521, 0.3998,

0.3256

0.2958

320.2692, 0.3212,
0.3258

0.0000, 0.0000,
0.0000

48.2574, 0.3287,
0.3229

48.2574, 0.3287,
0.3229

40.1201, 0.3463,
0.3172

57.6591, 0.3144,
0.3283

33.1869, 0.3679,
0.3113

68.3692, 0.3029,
0.3333

27.4024, 0.3943,
0.3055

80.4377, 0.2935,
0.3378

22.7041, 0.4258,
0.3005

90.8057, 0.2856,
0.3370

19.0237, 0.4622,
0.2968

91.2939, 0.2816,
0.3289

■ 16.2850, 0.5020,
0.2955

■ 14.4009, 0.5423,
0.2976

■ 13.2681, 0.5787,
0.3034

■ 12.7342, 0.6042,
0.3102

Harmonies

Analogous

The Analogous color harmony consists of three colors that are next to each other on the color wheel.



48.2574, 0.3170, 0.3137



48.2574, 0.3287, 0.3229



48.2574, 0.3361, 0.3338

Triad

The Triadic color harmony groups three colors that are evenly spaced from another and form a triangle on the color wheel.



48.2574, 0.3287, 0.3229



48.2574, 0.3207, 0.3505



48.2574, 0.2889, 0.3138

Complementary

The Complementary color scheme is a pair of colors which are on the opposite of each other on the color wheel.



48.2574, 0.3287, 0.3229



55.8485, 0.2988, 0.3352

Split Complementary

Split-complementary colors differ from the complementary color scheme. The scheme consists of three colors, the original color and two neighbors of the complement color.



48.2574, 0.2899, 0.3235



48.2574, 0.3287, 0.3229



48.2574, 0.3081, 0.3451

Square

The Square scheme is like the rectangle color scheme, but the four colors are evenly spaced on the color wheel.



48.2574, 0.3287, 0.3229



48.2574, 0.3314, 0.3499



48.2574, 0.2968, 0.3350



48.2574, 0.2942, 0.3084

Rectangle

The Rectangle color scheme consists of four colors that form a rectangle on the color wheel.



48.2574, 0.3287, 0.3229



48.2574, 0.3375, 0.3407



48.2574, 0.2968, 0.3350



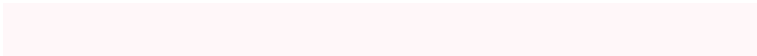
48.2574, 0.2885, 0.3166

Sweetspot

The Sweet Spot groups the original color and five complimentary colors.



48.2595, 0.3287, 0.3229



94.8359, 0.3166, 0.3274



48.3279, 0.3095, 0.3009



20.0108, 0.3177, 0.3270



0.0000, 0.0000, 0.0000



21.4041, 0.3127, 0.3290

Same Dimension

The Same Dimension uses a secret algorithm to generate beautiful new colors.



48.2595, 0.3287, 0.3229



77.6280, 0.3333, 0.3213



50.5645, 0.3320, 0.3366



11.2528, 0.3256, 0.3240



8.2070, 0.6011, 0.3085



0.4350, 0.5453, 0.2778

Inverse Universe

The Inverse Universe completely reimagines the original color for something new.



48.2595, 0.3287, 0.3229



77.6280, 0.3333, 0.3213



53.2635, 0.2953, 0.3213



11.2528, 0.3256, 0.3240



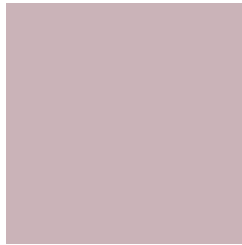
8.2070, 0.6011, 0.3085



0.4350, 0.5453, 0.2778

Previews

White Background



This preview shows how the Yxy color 48.2574, 0.3287, 0.3229 looks on a white background.

Color Contrast Check

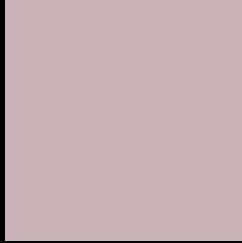
Large Text (above 18pt) WCAG AA × Fail

Any Text WCAG AA × Fail

Large Text (above 18pt) WCAG AAA × Fail

Any Text WCAG AAA × Fail

Black Background



This preview shows how the Yxy color 48.2574, 0.3287, 0.3229 looks on a black background.

Color Contrast Check

Large Text (above 18pt) WCAG AA ✓ Pass

Any Text WCAG AA ✓ Pass

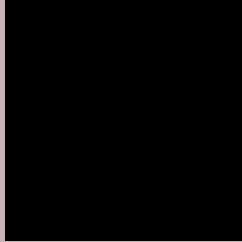
Large Text (above 18pt) WCAG AAA ✓ Pass

Any Text WCAG AAA ✓ Pass

If you want to check with other color combinations, try the [Color Contrast Checker](#).

Yxy 48.2574, 0.3287, 0.3229

Background



This preview shows how black text looks on a background with the Yxy color 48.2574, 0.3287, 0.3229.



This preview shows how white text looks on a background with the Yxy color 48.2574, 0.3287, 0.3229.

Color Blindness Simulation

Color vision deficiency is a very complex topic, and I could not describe the different causes any better than Wikipedia does, so if you want to learn more, you should check out their [article about color blindness](#).

Dichromacy



Original Color

48.2574, 0.3287, 0.3229

Protanopia

48.4336, 0.3129, 0.3252

Deuteranopia

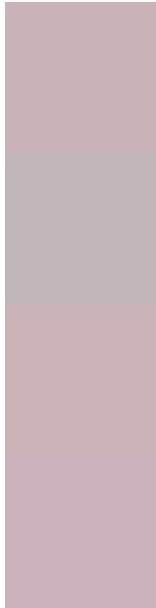
48.3974, 0.3296, 0.3229



Tritanopia

48.3431, 0.3231, 0.3120

Trichromacy



Original Color

48.2574, 0.3287, 0.3229

Protanomaly

48.2075, 0.3181, 0.3240

Deuteranomaly

48.3974, 0.3296, 0.3229

Tritanomaly

48.2114, 0.3255, 0.3156

Monochromacy



Original Color

48.2574, 0.3287, 0.3229

Achromatopsia

49.1021, 0.3127, 0.3290

Achromatomaly

48.5762, 0.3188, 0.3265

CSS Examples

Text

The CSS property to change the color of the text to Yxy 48.2574, 0.3287, 0.3229 is called "color". The color property can be set on classes, ids or directly on the HTML element.

This example shows how text in the color `rgb(202, 179, 184)` looks like.

```
.text, #text, p{  
    color:rgb(202, 179, 184)  
}
```

If you want to add a text shadow in that color use the text-shadow property, you can generate a text shadow directly with our [CSS Text Shadow Generator](#).

Here you see how black text with a 4 pixel rgb(202, 179, 184) colored shadow looks like.

```
.shadow{ text-shadow: 4px 4px 2px rgb(202, 179, 184) }
```

Border

The CSS property to change the border of an element to Yxy 48.2574, 0.3287, 0.3229 is called "border". The border property can be set on classes, ids or directly on the HTML element.

This example shows the color as border, it can be applied via the CSS property "border" or "border-color".

```
.border, #border, table{ border:4px solid rgb(202, 179, 184) }
```

If only the border color should be changed use the property border-color.

```
.border{ border-color:rgb(202, 179, 184) }
```

If you want to add a box shadow in that color use:

Here you see how a box with a 4 pixel rgb(202, 179, 184) colored shadow looks like.

```
.boxshadow{ -moz-box-shadow:4px 4px 4px  
4px rgb(202, 179, 184); -webkit-box-  
shadow:4px 4px 4px 4px rgb(202, 179, 184);  
box-shadow:4px 4px 4px 4px rgb(202, 179,  
184) }
```


Background

The CSS property to change the background color of an element to Yxy 48.2574, 0.3287, 0.3229 is called "background". The background property can be set on classes, ids or directly on the HTML element.

```
.background, #background, body{  
background: rgb(202, 179, 184) }
```

If only the background color should be changed can be used:

```
.background{ background-color: rgb(202,  
179, 184) }
```

This example shows the color as background, it is applied via the CSS property "background".

To optimize and compress your CSS code, you can use our [online CSS compressor and optimizer](#) based on csstidy. If you want to create a linear or radial gradient as background or border, check our [CSS Gradient Generator](#).

Hey! You found this booklet interesting? Support Converting Colors with the new Membership Option!

The pro membership hides all ads, plus gives you double the colors in the color bucket, and more awesome pro features!

[Learn more, Memberships starting at \\$2.50/m!](#)

**Follow me
on Twitter!**

@ConvertingColor