

Converting Colors

$Yxy(48.2781, 0.3270, 0.3204)$

Have a look what the booklet for
Yxy(48.2781, 0.3270, 0.3204)
contains.

Yxy(48.3419, 0.3270, 0.3204)	3
Conversions	4
Details	6
Harmonies	12
Previews	24
Color Blindness Simulation	27
CSS Examples	30

Color

Yxy(48.3419, 0.3270, 0.3204)

Conversions

Conversions Part 1

Format	Color
Hex	CAB3BA
RGB	202, 179, 186
RGB Percent	79%, 70%, 73%
CMY	0.2079, 0.2980, 0.2705
CMYK	0.00, 0.11, 0.08, 0.21
HSL	342°, 18%, 75%
HSV	342°, 11%, 79%
XYZ	49.3377, 48.3419, 53.2002
YIQ	186.6750, 11.4610, 7.0530

Conversions

Conversions Part 2

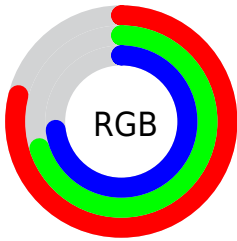
Format	Color
R _Y B	202, 179, 186
Decimal	13284282
CIE Lab	75.04, 9.42, -0.56
CIE LCh	75, 9.440, 356.607
Yxy	48.3419, 0.3270, 0.3204
Android (android.graphics.Color)	4291474362 (0xFFCAB3BA)
YUV	186.6750, -0.3328, 13.4400
Hunter-Lab	69.5283, 4.9900, 3.3036

Details

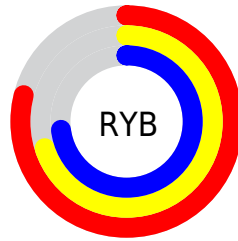
The Yxy color $48.3419, 0.3270, 0.3204$ is a light color, and the websafe version is hex `CCCCCC`. A complement of this color would be $55.7536, 0.3002, 0.3378$, and the grayscale version is $49.4991, 0.3127, 0.3290$.

A 20% lighter version of the original color is $87.0875, 0.3218, 0.3222$, and $22.9111, 0.3313, 0.3175$ is the 20% darker color. If you saturate the color by 10%, you get $40.2639, 0.3426, 0.3124$, and if you desaturate by 10%, it is $57.6686, 0.3143, 0.3280$.

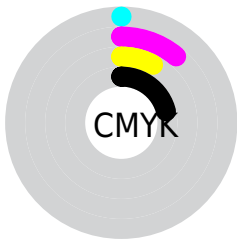
Distribution



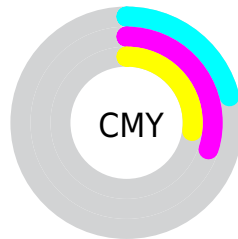
- Red (79%)
- Green (70%)
- Blue (73%)



- Red (79%)
- Yellow (70%)
- Blue (73%)



- Cyan (0%)
- Magenta (11%)
- Yellow (8%)
- Black (21%)





- Cyan (21%)
- Magenta (30%)
- Yellow (27%)

Brightness & Saturation Gradients

These gradients show how the Yxy color 48.3419, 0.3270, 0.3204 changes by changing the brightness by 10 percent. The first figure shows a shift by +10% for each color and the second figure -10%.


Similar to the brightness gradients but the following saturation gradients show a change of the Yxy color 48.3419, 0.3270, 0.3204 by changing the saturation by 10% instead.


 48.3419, 0.3270,
0.3204

 48.3419, 0.3270,
0.3204

380.1457, 0.3199,
0.3247

 34.0977, 0.3288,
0.3193


 87.7132, 0.3244,
0.3219

 22.9687, 0.3310,
0.3180

113.6092, 0.3235,
0.3225

 14.5704, 0.3340,
0.3162


144.1579, 0.3226,
0.3230

 8.5184, 0.3382,
0.3137

179.7436, 0.3219,
0.3234

 4.4284, 0.3443,
0.3100

220.7509, 0.3213,
0.3238

 1.9160, 0.3544,
0.3040

267.5641, 0.3208,

 0.5580, 0.3870,

0.3241

0.2840

320.5676, 0.3203,
0.3244

0.0000, 0.0000,
0.0000

48.3419, 0.3270,
0.3204

48.3419, 0.3270,
0.3204

40.2639, 0.3426,
0.3124

57.6686, 0.3143,
0.3280

33.3751, 0.3617,
0.3041

68.2874, 0.3039,
0.3351

27.6208, 0.3847,
0.2959

80.2475, 0.2954,
0.3415

22.9396, 0.4121,
0.2886

90.4920, 0.2882,
0.3425

19.2639, 0.4438,
0.2829

91.2934, 0.2816,
0.3289

■ 16.5186, 0.4787,
0.2800

■ 14.6179, 0.5150,
0.2810

■ 13.4598, 0.5495,
0.2868

■ 12.8982, 0.5758,
0.2945

Harmonies

Analogous

The Analogous color harmony consists of three colors that are next to each other on the color wheel.



48.3419, 0.3144, 0.3116



48.3419, 0.3270, 0.3204



48.3419, 0.3359, 0.3315

Triad

The Triadic color harmony groups three colors that are evenly spaced from another and form a triangle on the color wheel.



48.3419, 0.3270, 0.3204



48.3419, 0.3237, 0.3518



48.3419, 0.2877, 0.3150

Complementary

The Complementary color scheme is a pair of colors which are on the opposite of each other on the color wheel.



48.3419, 0.3270, 0.3204



55.7536, 0.3002, 0.3378

Split Complementary

Split-complementary colors differ from the complementary color scheme. The scheme consists of three colors, the original color and two neighbors of the complement color.



48.3419, 0.2901, 0.3258



48.3419, 0.3270, 0.3204



48.3419, 0.3107, 0.3474

Square

The Square scheme is like the rectangle color scheme, but the four colors are evenly spaced on the color wheel.



48.3419, 0.3270, 0.3204



48.3419, 0.3339, 0.3498



48.3419, 0.2984, 0.3377



48.3419, 0.2918, 0.3083

Rectangle

The Rectangle color scheme consists of four colors that form a rectangle on the color wheel.



48.3419, 0.3270, 0.3204



48.3419, 0.3384, 0.3389



48.3419, 0.2984, 0.3377



48.3419, 0.2878, 0.3183

Sweetspot

The Sweet Spot groups the original color and five complimentary colors.



48.3440, 0.3270, 0.3204



94.8784, 0.3162, 0.3268



48.0702, 0.3079, 0.3008



20.0222, 0.3172, 0.3262



0.0000, 0.0000, 0.0000



21.4041, 0.3127, 0.3290

Same Dimension

The Same Dimension uses a secret algorithm to generate beautiful new colors.



48.3440, 0.3270, 0.3204



77.8047, 0.3311, 0.3182



49.7666, 0.3323, 0.3343



11.2692, 0.3243, 0.3219



8.3160, 0.5723, 0.2926



0.4426, 0.5157, 0.2614

Inverse Universe

The Inverse Universe completely reimagines the original color for something new.



48.3440, 0.3270, 0.3204



77.8047, 0.3311, 0.3182



54.1297, 0.2954, 0.3237



11.2692, 0.3243, 0.3219



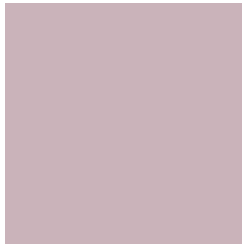
8.3160, 0.5723, 0.2926



0.4426, 0.5157, 0.2614

Previews

White Background



This preview shows how the Yxy color 48.3419, 0.3270, 0.3204 looks on a white background.

Color Contrast Check

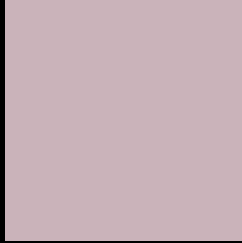
Large Text (above 18pt) WCAG AA × Fail

Any Text WCAG AA × Fail

Large Text (above 18pt) WCAG AAA × Fail

Any Text WCAG AAA × Fail

Black Background



This preview shows how the Yxy color 48.3419, 0.3270, 0.3204 looks on a black background.

Color Contrast Check

Large Text (above 18pt) WCAG AA ✓ Pass

Any Text WCAG AA ✓ Pass

Large Text (above 18pt) WCAG AAA ✓ Pass

Any Text WCAG AAA ✓ Pass

If you want to check with other color combinations, try the [Color Contrast Checker](#).

Yxy 48.3419, 0.3270, 0.3204

Background



This preview shows how black text looks on a background with the Yxy color 48.3419, 0.3270, 0.3204.



This preview shows how white text looks on a background with the Yxy color 48.3419, 0.3270, 0.3204.

Color Blindness Simulation

Color vision deficiency is a very complex topic, and I could not describe the different causes any better than Wikipedia does, so if you want to learn more, you should check out their [article about color blindness](#).

Dichromacy



Original Color

48.3419, 0.3270, 0.3204

Protanopia

48.5199, 0.3113, 0.3226

Deuteranopia

48.3419, 0.3270, 0.3204



Tritanopia

48.3431, 0.3231, 0.3120

Trichromacy



Original Color

48.3419, 0.3270, 0.3204

Protanomaly

48.2932, 0.3165, 0.3215

Deuteranomaly

48.3419, 0.3270, 0.3204

Tritanomaly

48.2550, 0.3247, 0.3144

Monochromacy



Original Color

48.3419, 0.3270, 0.3204

Achromatopsia

49.6933, 0.3127, 0.3290

Achromatomaly

49.0753, 0.3171, 0.3252

CSS Examples

Text

The CSS property to change the color of the text to Yxy 48.3419, 0.3270, 0.3204 is called "color". The color property can be set on classes, ids or directly on the HTML element.

This example shows how text in the color `rgb(202, 179, 186)` looks like.

```
.text, #text, p{  
    color:rgb(202, 179, 186)  
}
```

If you want to add a text shadow in that color use the text-shadow property, you can generate a text shadow directly with our [CSS Text Shadow Generator](#).

Here you see how black text with a 4 pixel rgb(202, 179, 186) colored shadow looks like.

```
.shadow{ text-shadow: 4px 4px 2px rgb(202, 179, 186) }
```

Border

The CSS property to change the border of an element to Yxy 48.3419, 0.3270, 0.3204 is called "border". The border property can be set on classes, ids or directly on the HTML element.

This example shows the color as border, it can be applied via the CSS property "border" or "border-color".

```
.border, #border, table{ border:4px solid rgb(202, 179, 186) }
```

If only the border color should be changed use the property `border-color`.

```
.border{ border-color:rgb(202, 179, 186) }
```

If you want to add a box shadow in that color use:

Here you see how a box with a 4 pixel `rgb(202, 179, 186)` colored shadow looks like.

```
.boxshadow{ -moz-box-shadow:4px 4px 4px  
4px rgb(202, 179, 186); -webkit-box-  
shadow:4px 4px 4px 4px rgb(202, 179, 186);  
box-shadow:4px 4px 4px 4px rgb(202, 179,  
186) }
```


Background

The CSS property to change the background color of an element to Yxy 48.3419, 0.3270, 0.3204 is called "background". The background property can be set on classes, ids or directly on the HTML element.

```
.background, #background, body{  
background: rgb(202, 179, 186) }
```

If only the background color should be changed can be used:

```
.background{ background-color: rgb(202,  
179, 186) }
```

This example shows the color as background, it is applied via the CSS property "background".

To optimize and compress your CSS code, you can use our [online CSS compressor and optimizer](#) based on csstidy. If you want to create a linear or radial gradient as background or border, check our [CSS Gradient Generator](#).

Hey! You found this booklet interesting? Support Converting Colors with the new Membership Option!

The pro membership hides all ads, plus gives you double the colors in the color bucket, and more awesome pro features!

[Learn more, Memberships starting at \\$2.50/m!](#)

**Follow me
on Twitter!**

@ConvertingColor