

# Converting Colors

$Y_{xy}(48.3600, 0.3566, 0.3628)$

Have a look what the booklet for  
Yxy(48.3600, 0.3566, 0.3628)  
contains.

<b>Yxy(48.3600, 0.3566, 0.3628)</b> .....	3
<b>Conversions</b> .....	4
<b>Details</b> .....	6
<b>Harmonies</b> .....	12
<b>Previews</b> .....	24
<b>Color Blindness Simulation</b> .....	27
<b>CSS Examples</b> .....	30

# Color

**Yxy(48.3600, 0.3566, 0.3628)**

# Conversions

## Conversions Part 1

<b>Format</b>	<b>Color</b>
Hex	CDB59A
RGB	205, 181, 154
RGB Percent	80%, 71%, 60%
CMY	0.1961, 0.2902, 0.3961
CMYK	0.00, 0.12, 0.25, 0.20
HSL	32°, 34%, 70%
HSV	32°, 25%, 80%
XYZ	47.5336, 48.3600, 37.4030
YIQ	185.0980, 22.9710, -3.3090

# Conversions

## Conversions Part 2

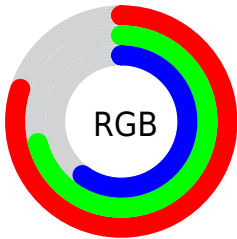
Format	Color
R <sub>YB</sub>	199, 205, 154
Decimal	13481370
CIE Lab	75.05, 4.42, 16.92
CIE LCh	75, 17.482, 75.371
Yxy	48.3600, 0.3566, 0.3628
Android (android.graphics.Color)	4291671450 (0xFFCDB59A)
YUV	185.0980, -15.3313, 17.4541
Hunter-Lab	69.5414, 0.3126, 16.7896

# Details

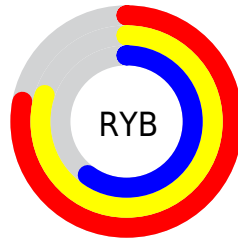
The Yxy color **48.3600, 0.3566, 0.3628** is a light color, and the websafe version is hex **CCCC99**. A complement of this color would be **43.1193, 0.2733, 0.2926**, and the grayscale version is **48.6517, 0.3127, 0.3290**.

A 20% lighter version of the original color is **86.3824, 0.3436, 0.3580**, and **22.9016, 0.3686, 0.3712** is the 20% darker color. If you saturate the color by 10%, you get **43.9482, 0.3781, 0.3770**, and if you desaturate by 10%, it is **53.1644, 0.3373, 0.3488**.

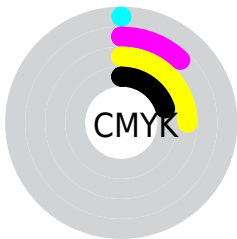
# Distribution



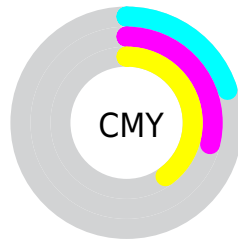
- Red (80%)
- Green (71%)
- Blue (60%)



- Red (78%)
- Yellow (80%)
- Blue (60%)



- Cyan (0%)
- Magenta (12%)
- Yellow (25%)
- Black (20%)




- Cyan (20%)
- Magenta (29%)
- Yellow (40%)

# Brightness & Saturation Gradients

These gradients show how the Yxy color 48.3600, 0.3566, 0.3628 changes by changing the brightness by 10 percent. The first figure shows a shift by +10% for each color and the second figure -10%.


Similar to the brightness gradients but the following saturation gradients show a change of the Yxy color 48.3600, 0.3566, 0.3628 by changing the saturation by 10% instead.





 48.3600, 0.3566,  
0.3628

 48.3600, 0.3566,  
0.3628


380.2173, 0.3347,  
0.3463

 34.1121, 0.3620,  
0.3668


 87.7402, 0.3487,  
0.3569

 22.9797, 0.3689,  
0.3718


 113.6412, 0.3457,  
0.3546

 14.5785, 0.3780,  
0.3784


144.1954, 0.3432,  
0.3527

 8.5241, 0.3906,  
0.3872

179.7871, 0.3410,  
0.3511

 4.4321, 0.4088,  
0.3995

220.8007, 0.3391,  
0.3496

 1.9181, 0.4408,  
0.4207

267.6207, 0.3375,

 0.5592, 0.5334,

0.3484

0.4666

320.6315, 0.3360,  
0.3473

0.0000, 0.0000,  
0.0000

48.3600, 0.3566,  
0.3628

48.3600, 0.3566,  
0.3628

43.9482, 0.3781,  
0.3770

53.1644, 0.3373,  
0.3488

39.9112, 0.4018,  
0.3909

58.3658, 0.3203,  
0.3353

36.2389, 0.4272,  
0.4034

63.9765, 0.3053,  
0.3226

32.9186, 0.4534,  
0.4136

70.0065, 0.2922,  
0.3108

29.9361, 0.4792,  
0.4202

76.3678, 0.2816,  
0.3015

■ 27.2760, 0.5031,  
0.4219

■ 81.8624, 0.2822,  
0.3119

■ 24.9205, 0.5235,  
0.4183

■ 87.6584, 0.2828,  
0.3222

■ 23.8183, 0.5330,  
0.4150

■ 91.7190, 0.2833,  
0.3289

# Harmonies

## Analogous

The Analogous color harmony consists of three colors that are next to each other on the color wheel.



48.3600, 0.3604, 0.3457



48.3600, 0.3566, 0.3628



48.3600, 0.3408, 0.3715

# Triad

The Triadic color harmony groups three colors that are evenly spaced from another and form a triangle on the color wheel.



48.3600, 0.3566, 0.3628



48.3600, 0.2758, 0.3310



48.3600, 0.3062, 0.2934

# Complementary

The Complementary color scheme is a pair of colors which are on the opposite of each other on the color wheel.



48.3600, 0.3566, 0.3628



43.1193, 0.2733, 0.2926

# Split Complementary

Split-complementary colors differ from the complementary color scheme. The scheme consists of three colors, the original color and two neighbors of the complement color.



48.3600, 0.2843, 0.2888



48.3600, 0.3566, 0.3628



48.3600, 0.2673, 0.3093

# Square

The Square scheme is like the rectangle color scheme, but the four colors are evenly spaced on the color wheel.



48.3600, 0.3566, 0.3628



48.3600, 0.2940, 0.3531



48.3600, 0.2703, 0.2942



48.3600, 0.3307, 0.3066



# Rectangle

The Rectangle color scheme consists of four colors that form a rectangle on the color wheel.



48.3600, 0.3566, 0.3628



48.3600, 0.3258, 0.3708



48.3600, 0.2703, 0.2942



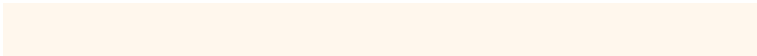
48.3600, 0.2983, 0.2908

# Sweetspot

The Sweet Spot groups the original color and five complimentary colors.



48.3622, 0.3566, 0.3628



93.6609, 0.3239, 0.3382



39.3329, 0.3400, 0.2983



19.9337, 0.3249, 0.3390



0.0000, 0.0000, 0.0000



21.4041, 0.3127, 0.3290



# Same Dimension

The Same Dimension uses a secret algorithm to generate beautiful new colors.



48.3622, 0.3566, 0.3628



75.1596, 0.3682, 0.3707



58.8541, 0.3493, 0.3907



12.1805, 0.3277, 0.3413



15.0199, 0.5310, 0.4166



0.9261, 0.5034, 0.4385

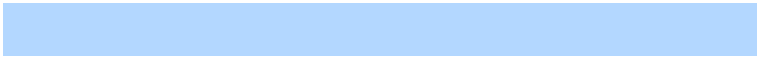


# Inverse Universe

The Inverse Universe completely reimagines the original color for something new.



43.1193, 0.2733, 0.2926



65.0889, 0.2642, 0.2833



34.4753, 0.2711, 0.2591



11.6999, 0.2983, 0.3164



8.1916, 0.1749, 0.1495

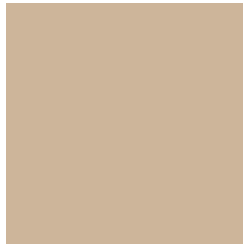


0.5741, 0.1851, 0.1864



# Previews

## White Background



This preview shows how the Yxy color 48.3600, 0.3566, 0.3628 looks on a white background.

## Color Contrast Check

Large Text (above 18pt) WCAG AA × Fail

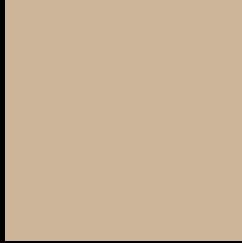
Any Text WCAG AA × Fail

Large Text (above 18pt) WCAG AAA × Fail

Any Text WCAG AAA × Fail



# Black Background



This preview shows how the Yxy color 48.3600, 0.3566, 0.3628 looks on a black background.

## Color Contrast Check

Large Text (above 18pt) WCAG AA ✓ Pass

Any Text WCAG AA ✓ Pass

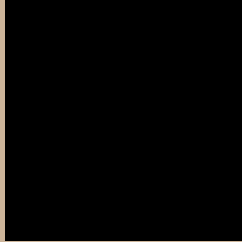
Large Text (above 18pt) WCAG AAA ✓ Pass

Any Text WCAG AAA ✓ Pass

If you want to check with other color combinations, try the [Color Contrast Checker](#).

**Yxy 48.3600, 0.3566, 0.3628**

## Background



This preview shows how black text looks on a background with the Yxy color 48.3600, 0.3566, 0.3628.



This preview shows how white text looks on a background with the Yxy color 48.3600, 0.3566, 0.3628.

# Color Blindness Simulation

Color vision deficiency is a very complex topic, and I could not describe the different causes any better than Wikipedia does, so if you want to learn more, you should check out their [article about color blindness](#).

## Dichromacy



### Original Color

48.3600, 0.3566, 0.3628

### Protanopia

48.2834, 0.3450, 0.3650

### Deuteranopia

48.3535, 0.3640, 0.3572



## Tritanopia

48.3237, 0.3302, 0.3122

# Trichromacy



## Original Color

48.3600, 0.3566, 0.3628

## Protanomaly

48.3756, 0.3497, 0.3646

## Deuteranomaly

48.3084, 0.3609, 0.3586

## Tritanomaly

48.4250, 0.3402, 0.3303

# Monochromacy



## Original Color

48.3600, 0.3566, 0.3628

## Achromatopsia

48.5150, 0.3127, 0.3290

## Achromatomaly

48.5434, 0.3275, 0.3418

# CSS Examples

## Text

The CSS property to change the color of the text to Yxy 48.3600, 0.3566, 0.3628 is called "color". The color property can be set on classes, ids or directly on the HTML element.

This example shows how text in the color `rgb(205, 181, 154)` looks like.

```
.text, #text, p{  
    color:rgb(205, 181, 154)  
}
```

If you want to add a text shadow in that color use the text-shadow property, you can generate a text shadow directly with our [CSS Text Shadow Generator](#).

Here you see how black text with a 4 pixel rgb(205, 181, 154) colored shadow looks like.

```
.shadow{ text-shadow: 4px 4px 2px rgb(205, 181, 154) }
```

## Border

The CSS property to change the border of an element to Yxy 48.3600, 0.3566, 0.3628 is called "border". The border property can be set on classes, ids or directly on the HTML element.

This example shows the color as border, it can be applied via the CSS property "border" or "border-color".

```
.border, #border, table{ border:4px solid rgb(205, 181, 154) }
```

If only the border color should be changed use the property `border-color`.

```
.border{ border-color:rgb(205, 181, 154) }
```

If you want to add a box shadow in that color use:

Here you see how a box with a 4 pixel `rgb(205, 181, 154)` colored shadow looks like.

```
.boxshadow{ -moz-box-shadow:4px 4px 4px  
4px rgb(205, 181, 154); -webkit-box-  
shadow:4px 4px 4px 4px rgb(205, 181, 154);  
box-shadow:4px 4px 4px 4px rgb(205, 181,  
154) }
```



# Background

The CSS property to change the background color of an element to Yxy 48.3600, 0.3566, 0.3628 is called "background". The background property can be set on classes, ids or directly on the HTML element.

```
.background, #background, body{  
background: rgb(205, 181, 154) }
```

If only the background color should be changed can be used:

```
.background{ background-color: rgb(205,  
181, 154) }
```

This example shows the color as background, it is applied via the CSS property "background".

To optimize and compress your CSS code, you can use our [online CSS compressor and optimizer](#) based on csstidy. If you want to create a linear or radial gradient as background or border, check our [CSS Gradient Generator](#).

Hey! You found this booklet interesting? Support Converting Colors with the new Membership Option!

The pro membership hides all ads, plus gives you double the colors in the color bucket, and more awesome pro features!

**[Learn more, Memberships starting at \\$2.50/m!](#)**

**Follow me  
on Twitter!**

@ConvertingColor