

# Converting Colors

$Yxy(48.3878, 0.3402, 0.3422)$

Have a look what the booklet for  
Yxy(48.3878, 0.3402, 0.3422)  
contains.

<b>Yxy(48.5066, 0.3402, 0.3428)</b> .....	3
<b><i>Conversions</i></b> .....	4
<b><i>Details</i></b> .....	6
<b><i>Harmonies</i></b> .....	12
<b><i>Previews</i></b> .....	24
<b><i>Color Blindness Simulation</i></b> .....	27
<b><i>CSS Examples</i></b> .....	30

# Color

**Yxy(48.5066, 0.3402, 0.3428)**

# Conversions

## Conversions Part 1

Format	Color
Hex	CAB5AA
RGB	202, 181, 170
RGB Percent	79%, 71%, 67%
CMY	0.2078, 0.2902, 0.3333
CMYK	0.00, 0.10, 0.16, 0.21
HSL	21°, 23%, 73%
HSV	21°, 16%, 79%
XYZ	48.1387, 48.5066, 44.8559
YIQ	186.0250, 16.0470, 1.0310

# Conversions

## Conversions Part 2

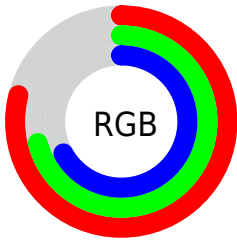
Format	Color
R <sub>Y</sub> B	202, 187, 170
Decimal	13284778
CIE Lab	75.14, 5.70, 8.33
CIE LCh	75, 10.089, 55.628
Yxy	48.5066, 0.3402, 0.3428
Android (android.graphics.Color)	4291474858 (0xFFCAB5AA)
YUV	186.0250, -7.9003, 14.0101
Hunter-Lab	69.6467, 1.4947, 10.5670

# Details

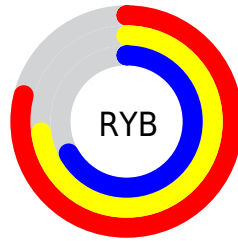
The Yxy color  $48.5066, 0.3402, 0.3428$  is a light color, and the websafe version is hex `CCCCCC`. A complement of this color would be  $50.0772, 0.2884, 0.3148$ , and the grayscale version is  $49.1576, 0.3127, 0.3290$ .

A 20% lighter version of the original color is  $87.2646, 0.3325, 0.3409$ , and  $23.0422, 0.3483, 0.3459$  is the 20% darker color. If you saturate the color by 10%, you get  $42.6640, 0.3615, 0.3521$ , and if you desaturate by 10%, it is  $54.9842, 0.3220, 0.3339$ .

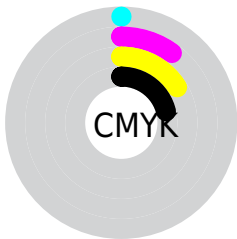
# Distribution



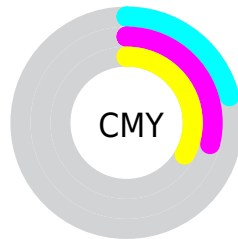
- Red (79%)
- Green (71%)
- Blue (67%)



- Red (79%)
- Yellow (73%)
- Blue (67%)



- Cyan (0%)
- Magenta (10%)
- Yellow (16%)
- Black (21%)




- Cyan (21%)
- Magenta (29%)
- Yellow (33%)

# Brightness & Saturation Gradients

These gradients show how the Yxy color 48.5066, 0.3402, 0.3428 changes by changing the brightness by 10 percent. The first figure shows a shift by +10% for each color and the second figure -10%.

Similar to the brightness gradients but the following saturation gradients show a change of the Yxy color 48.5066, 0.3402, 0.3428 by changing the saturation by 10% instead.




 48.5066, 0.3402,  
0.3428

 48.5066, 0.3402,  
0.3428

380.7967, 0.3265,  
0.3361

 34.2282, 0.3436,  
0.3444


 87.9582, 0.3352,  
0.3404

 23.0690, 0.3480,  
0.3465


113.9002, 0.3333,  
0.3395

 14.6445, 0.3538,  
0.3492


144.4990, 0.3318,  
0.3387

 8.5702, 0.3620,  
0.3528

180.1388, 0.3304,  
0.3380

 4.4619, 0.3741,  
0.3580

221.2040, 0.3292,  
0.3375

 1.9352, 0.3939,  
0.3658

268.0792, 0.3282,

 0.5694, 0.5284,

0.3369

0.4423

321.1486, 0.3273,  
0.3365

0.0000, 0.0000,  
0.0000

48.5066, 0.3402,  
0.3428

48.5066, 0.3402,  
0.3428

42.6640, 0.3615,  
0.3521

54.9842, 0.3220,  
0.3339

37.4302, 0.3864,  
0.3616

62.1090, 0.3066,  
0.3256

32.7869, 0.4149,  
0.3706

69.9011, 0.2935,  
0.3180

28.7121, 0.4468,  
0.3785

78.3776, 0.2824,  
0.3110

25.1824, 0.4811,  
0.3842

86.4807, 0.2811,  
0.3208

■ 22.1727, 0.5160,  
0.3864

■ 91.2980, 0.2816,  
0.3289

■ 19.6553, 0.5486,  
0.3840

■ 17.5992, 0.5759,  
0.3766

■ 16.8663, 0.5861,  
0.3728

# Harmonies

## Analogous

The Analogous color harmony consists of three colors that are next to each other on the color wheel.



48.5066, 0.3372, 0.3313



48.5066, 0.3402, 0.3428



48.5066, 0.3356, 0.3510

# Triad

The Triadic color harmony groups three colors that are evenly spaced from another and form a triangle on the color wheel.



48.5066, 0.3402, 0.3428



48.5066, 0.2978, 0.3387



48.5066, 0.3003, 0.3057

# Complementary

The Complementary color scheme is a pair of colors which are on the opposite of each other on the color wheel.



48.5066, 0.3402, 0.3428



50.0772, 0.2884, 0.3148

# Split Complementary

Split-complementary colors differ from the complementary color scheme. The scheme consists of three colors, the original color and two neighbors of the complement color.



48.5066, 0.2902, 0.3071



48.5066, 0.3402, 0.3428



48.5066, 0.2888, 0.3259

# Square

The Square scheme is like the rectangle color scheme, but the four colors are evenly spaced on the color wheel.



48.5066, 0.3402, 0.3428



48.5066, 0.3110, 0.3489



48.5066, 0.2860, 0.3144



48.5066, 0.3140, 0.3102



# Rectangle

The Rectangle color scheme consists of four colors that form a rectangle on the color wheel.



48.5066, 0.3402, 0.3428



48.5066, 0.3289, 0.3534



48.5066, 0.2860, 0.3144



48.5066, 0.2964, 0.3054

# Sweetspot

The Sweet Spot groups the original color and five complimentary colors.



48.5088, 0.3402, 0.3428



93.9823, 0.3207, 0.3333



45.0847, 0.3235, 0.3028



19.9399, 0.3219, 0.3339



0.0000, 0.0000, 0.0000



21.4041, 0.3127, 0.3290

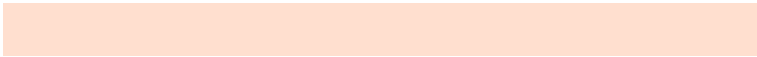


# Same Dimension

The Same Dimension uses a secret algorithm to generate beautiful new colors.



48.5088, 0.3402, 0.3428



78.6253, 0.3471, 0.3459



55.2457, 0.3372, 0.3617



11.8335, 0.3282, 0.3370



11.0024, 0.5837, 0.3748



0.7084, 0.5456, 0.4050

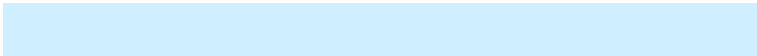


# Inverse Universe

The Inverse Universe completely reimagines the original color for something new.



50.0772, 0.2884, 0.3148



81.7737, 0.2831, 0.3114



43.6021, 0.2875, 0.2940



12.0526, 0.2983, 0.3208



13.6364, 0.1926, 0.2135

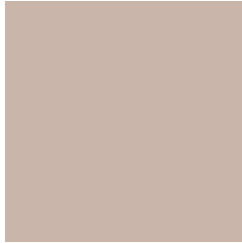


0.8413, 0.1996, 0.2387



# Previews

## White Background



This preview shows how the Yxy color 48.5066, 0.3402, 0.3428 looks on a white background.

## Color Contrast Check

Large Text (above 18pt) WCAG AA × Fail

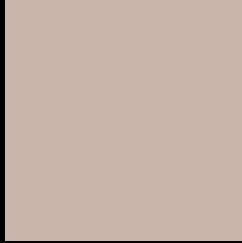
Any Text WCAG AA × Fail

Large Text (above 18pt) WCAG AAA × Fail

Any Text WCAG AAA × Fail



# Black Background



This preview shows how the Yxy color 48.5066, 0.3402, 0.3428 looks on a black background.

## Color Contrast Check

Large Text (above 18pt) WCAG AA ✓ Pass

Any Text WCAG AA ✓ Pass

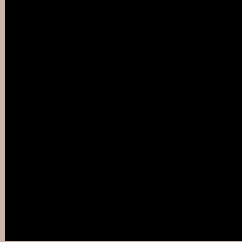
Large Text (above 18pt) WCAG AAA ✓ Pass

Any Text WCAG AAA ✓ Pass

If you want to check with other color combinations, try the [Color Contrast Checker](#).

**Yxy 48.5066, 0.3402, 0.3428**

## Background



This preview shows how black text looks on a background with the Yxy color 48.5066, 0.3402, 0.3428.



This preview shows how white text looks on a background with the Yxy color 48.5066, 0.3402, 0.3428.

# Color Blindness Simulation

Color vision deficiency is a very complex topic, and I could not describe the different causes any better than Wikipedia does, so if you want to learn more, you should check out their [article about color blindness](#).

## Dichromacy



### Original Color

48.5066, 0.3402, 0.3428

### Protanopia

48.4660, 0.3292, 0.3444

### Deuteranopia

48.5524, 0.3460, 0.3401



## Tritanopia

48.6257, 0.3248, 0.3121

# Trichromacy



## Original Color

48.5066, 0.3402, 0.3428

## Protanomaly

48.5430, 0.3337, 0.3443

## Deuteranomaly

48.6666, 0.3440, 0.3414

## Tritanomaly

48.5383, 0.3305, 0.3229

# Monochromacy



## Original Color

48.5066, 0.3402, 0.3428

## Achromatopsia

49.1021, 0.3127, 0.3290

## Achromatomaly

48.7827, 0.3227, 0.3341

# CSS Examples

## Text

The CSS property to change the color of the text to Yxy 48.5066, 0.3402, 0.3428 is called "color". The color property can be set on classes, ids or directly on the HTML element.

This example shows how text in the color `rgb(202, 181, 170)` looks like.

```
.text, #text, p{  
    color:rgb(202, 181, 170)  
}
```

If you want to add a text shadow in that color use the text-shadow property, you can generate a text shadow directly with our [CSS Text Shadow Generator](#).

Here you see how black text with a 4 pixel rgb(202, 181, 170) colored shadow looks like.

```
.shadow{ text-shadow: 4px 4px 2px rgb(202, 181, 170) }
```

## Border

The CSS property to change the border of an element to Yxy 48.5066, 0.3402, 0.3428 is called "border". The border property can be set on classes, ids or directly on the HTML element.

This example shows the color as border, it can be applied via the CSS property "border" or "border-color".

```
.border, #border, table{ border:4px solid rgb(202, 181, 170) }
```

If only the border color should be changed use the property border-color.

```
.border{ border-color:rgb(202, 181, 170) }
```

If you want to add a box shadow in that color use:

Here you see how a box with a 4 pixel rgb(202, 181, 170) colored shadow looks like.

```
.boxshadow{ -moz-box-shadow:4px 4px 4px  
4px rgb(202, 181, 170); -webkit-box-  
shadow:4px 4px 4px 4px rgb(202, 181, 170);  
box-shadow:4px 4px 4px 4px rgb(202, 181,  
170) }
```



# Background

The CSS property to change the background color of an element to Yxy 48.5066, 0.3402, 0.3428 is called "background". The background property can be set on classes, ids or directly on the HTML element.

```
.background, #background, body{  
background: rgb(202, 181, 170) }
```

If only the background color should be changed can be used:

```
.background{ background-color: rgb(202,  
181, 170) }
```

This example shows the color as background, it is applied via the CSS property "background".

To optimize and compress your CSS code, you can use our [online CSS compressor and optimizer](#) based on csstidy. If you want to create a linear or radial gradient as background or border, check our [CSS Gradient Generator](#).

Hey! You found this booklet  
interesting? Support Converting  
Colors with the new Membership  
Option!

The pro membership hides all ads, plus gives you  
double the colors in the color bucket, and more  
awesome pro features!

**[Learn more, Memberships starting at \\$2.50/m!](#)**

**Follow me  
on Twitter!**

@ConvertingColor