

Converting Colors

Yxy(48.5795, 0.3360, 0.3169)

Have a look what the booklet for
Yxy(48.5795, 0.3360, 0.3169)
contains.

Yxy(48.5929, 0.3363, 0.3171)	3
Conversions	4
Details	6
Harmonies	12
Previews	24
Color Blindness Simulation	27
CSS Examples	30

Color

Yxy(48.5929, 0.3363, 0.3171)

Conversions

Conversions Part 1

Format	Color
Hex	D4B0BA
RGB	212, 176, 186
RGB Percent	83%, 69%, 73%
CMY	0.1687, 0.3098, 0.2706
CMYK	0.00, 0.17, 0.12, 0.17
HSL	343°, 29%, 76%
HSV	343°, 17%, 83%
XYZ	51.5351, 48.5929, 53.1135
YIQ	187.9040, 18.2460, 10.7420

Conversions

Conversions Part 2

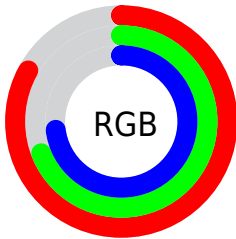
Format	Color
R _Y B	212, 176, 186
Decimal	13938874
CIE Lab	75.20, 14.62, -0.20
CIE LCh	75, 14.626, 359.209
Yxy	48.5929, 0.3363, 0.3171
Android (android.graphics.Color)	4292128954 (0xFFD4B0BA)
YUV	187.9040, -0.9387, 21.1322
Hunter-Lab	69.7086, 9.9739, 3.6208

Details

The Yxy color **48.5929, 0.3363, 0.3171** is a light color, and the websafe version is hex **CC9999**. A complement of this color would be **60.5742, 0.2936, 0.3413**, and the grayscale version is **50.2299, 0.3127, 0.3290**.

A 20% lighter version of the original color is **85.3840, 0.3220, 0.3192**, and **23.0275, 0.3429, 0.3131** is the 20% darker color. If you saturate the color by 10%, you get **40.3035, 0.3546, 0.3096**, and if you desaturate by 10%, it is **58.2545, 0.3214, 0.3243**.

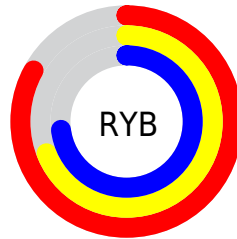
Distribution



Red (83%)

Green (69%)

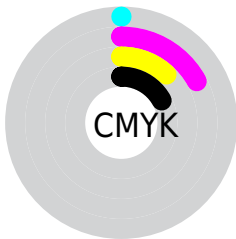
Blue (73%)



Red (83%)

Yellow (69%)

Blue (73%)

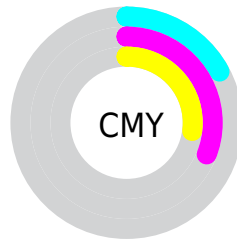


Cyan (0%)

Magenta (17%)

Yellow (12%)

Black (17%)



Cyan (17%)


Magenta (31%)


Yellow (27%)

Brightness & Saturation Gradients

These gradients show how the Yxy color 48.5929, 0.3363, 0.3171 changes by changing the brightness by 10 percent. The first figure shows a shift by +10% for each color and the second figure -10%.

Similar to the brightness gradients but the following saturation gradients show a change of the Yxy color 48.5929, 0.3363, 0.3171 by changing the saturation by 10% instead.


 48.5929, 0.3363,
0.3171

 48.5929, 0.3363,
0.3171


381.1374, 0.3246,
0.3230

 34.2967, 0.3392,
0.3156


 88.0865, 0.3321,
0.3192

 23.1216, 0.3429,
0.3138


114.0527, 0.3305,
0.3200

 14.6833, 0.3478,
0.3113


144.6776, 0.3291,
0.3207

 8.5974, 0.3547,
0.3078

180.3457, 0.3280,
0.3213

 4.4795, 0.3648,
0.3027

221.4413, 0.3269,
0.3218

 1.9453, 0.3814,
0.2944

268.3489, 0.3261,

 0.5754, 0.4268,

0.3223

0.2712

321.4528, 0.3253,
0.3227

0.0000, 0.0000,
0.0000

48.5929, 0.3363,
0.3171

48.5929, 0.3363,
0.3171

40.3035, 0.3546,
0.3096

58.2545, 0.3214,
0.3243

33.3175, 0.3769,
0.3021

69.3402, 0.3093,
0.3310

27.5701, 0.4037,
0.2950

81.9067, 0.2995,
0.3372

22.9880, 0.4351,
0.2891

92.2458, 0.2912,
0.3369

19.4905, 0.4705,
0.2855

92.7345, 0.2871,
0.3289

■ 16.9862, 0.5082,
0.2853

■ 15.3686, 0.5451,
0.2893

■ 14.4981, 0.5774,
0.2976

■ 14.3084, 0.5863,
0.3003

Harmonies

Analogous

The Analogous color harmony consists of three colors that are next to each other on the color wheel.



48.5929, 0.3169, 0.3034



48.5929, 0.3363, 0.3171



48.5929, 0.3495, 0.3341

Triad

The Triadic color harmony groups three colors that are evenly spaced from another and form a triangle on the color wheel.



48.5929, 0.3363, 0.3171



48.5929, 0.3278, 0.3644



48.5929, 0.2745, 0.3060

Complementary

The Complementary color scheme is a pair of colors which are on the opposite of each other on the color wheel.



48.5929, 0.3363, 0.3171



60.5742, 0.2936, 0.3413

Split Complementary

Split-complementary colors differ from the complementary color scheme. The scheme consists of three colors, the original color and two neighbors of the complement color.



48.5929, 0.2773, 0.3221



48.5929, 0.3363, 0.3171



48.5929, 0.3076, 0.3568

Square

The Square scheme is like the rectangle color scheme, but the four colors are evenly spaced on the color wheel.



48.5929, 0.3363, 0.3171



48.5929, 0.3444, 0.3618



48.5929, 0.2892, 0.3410



48.5929, 0.2815, 0.2967

Rectangle

The Rectangle color scheme consists of four colors that form a rectangle on the color wheel.



48.5929, 0.3363, 0.3171



48.5929, 0.3527, 0.3453



48.5929, 0.2892, 0.3410



48.5929, 0.2743, 0.3107

Sweetspot

The Sweet Spot groups the original color and five complimentary colors.



48.5951, 0.3363, 0.3171



91.5540, 0.3189, 0.3256



48.3357, 0.3061, 0.2861



19.3519, 0.3198, 0.3251



0.0000, 0.0000, 0.0000



21.4041, 0.3127, 0.3290

Same Dimension

The Same Dimension uses a secret algorithm to generate beautiful new colors.



48.5951, 0.3363, 0.3171



69.5156, 0.3418, 0.3147



51.3301, 0.3434, 0.3385



12.4769, 0.3248, 0.3226



8.8496, 0.5827, 0.2983



0.5478, 0.5326, 0.2708

Inverse Universe

The Inverse Universe completely reimagines the original color for something new.



48.5951, 0.3363, 0.3171



69.5156, 0.3418, 0.3147



57.2599, 0.2868, 0.3193



12.4769, 0.3248, 0.3226



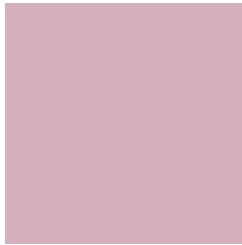
8.8496, 0.5827, 0.2983



0.5478, 0.5326, 0.2708

Previews

White Background



This preview shows how the Yxy color 48.5929, 0.3363, 0.3171 looks on a white background.

Color Contrast Check

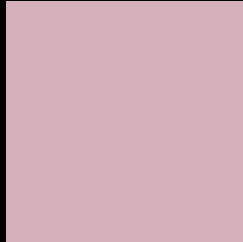
Large Text (above 18pt) WCAG AA × Fail

Any Text WCAG AA × Fail

Large Text (above 18pt) WCAG AAA × Fail

Any Text WCAG AAA × Fail

Black Background



This preview shows how the Yxy color 48.5929, 0.3363, 0.3171 looks on a black background.

Color Contrast Check

Large Text (above 18pt) WCAG AA ✓ Pass

Any Text WCAG AA ✓ Pass

Large Text (above 18pt) WCAG AAA ✓ Pass

Any Text WCAG AAA ✓ Pass

If you want to check with other color combinations, try the [Color Contrast Checker](#).

Yxy 48.5929, 0.3363, 0.3171

Background



This preview shows how black text looks on a background with the Yxy color 48.5929, 0.3363, 0.3171.



This preview shows how white text looks on a background with the Yxy color 48.5929, 0.3363, 0.3171.

Color Blindness Simulation

Color vision deficiency is a very complex topic, and I could not describe the different causes any better than Wikipedia does, so if you want to learn more, you should check out their [article about color blindness](#).

Dichromacy



Original Color

48.5929, 0.3363, 0.3171

Protanopia

48.6074, 0.3098, 0.3201

Deuteranopia

48.4395, 0.3288, 0.3217



Tritanopia

48.7218, 0.3337, 0.3135

Trichromacy



Original Color

48.5929, 0.3363, 0.3171

Protanomaly

48.4576, 0.3192, 0.3191

Deuteranomaly

48.4654, 0.3315, 0.3205

Tritanomaly

48.6786, 0.3346, 0.3147

Monochromacy



Original Color

48.5929, 0.3363, 0.3171

Achromatopsia

50.2886, 0.3127, 0.3290

Achromatomaly

49.7392, 0.3214, 0.3253

CSS Examples

Text

The CSS property to change the color of the text to Yxy 48.5929, 0.3363, 0.3171 is called "color". The color property can be set on classes, ids or directly on the HTML element.

This example shows how text in the color `rgb(212, 176, 186)` looks like.

```
.text, #text, p{  
    color:rgb(212, 176, 186)  
}
```

If you want to add a text shadow in that color use the text-shadow property, you can generate a text shadow directly with our [CSS Text Shadow Generator](#).

Here you see how black text with a 4 pixel rgb(212, 176, 186) colored shadow looks like.

```
.shadow{ text-shadow: 4px 4px 2px rgb(212, 176, 186) }
```

Border

The CSS property to change the border of an element to Yxy 48.5929, 0.3363, 0.3171 is called "border". The border property can be set on classes, ids or directly on the HTML element.

This example shows the color as border, it can be applied via the CSS property "border" or "border-color".

```
.border, #border, table{ border:4px solid rgb(212, 176, 186) }
```

If only the border color should be changed use the property `border-color`.

```
.border{ border-color:rgb(212, 176, 186) }
```

If you want to add a box shadow in that color use:

Here you see how a box with a 4 pixel `rgb(212, 176, 186)` colored shadow looks like.

```
.boxshadow{ -moz-box-shadow:4px 4px 4px  
4px rgb(212, 176, 186); -webkit-box-  
shadow:4px 4px 4px 4px rgb(212, 176, 186);  
box-shadow:4px 4px 4px 4px rgb(212, 176,  
186) }
```


Background

The CSS property to change the background color of an element to Yxy 48.5929, 0.3363, 0.3171 is called "background". The background property can be set on classes, ids or directly on the HTML element.

```
.background, #background, body{  
background: rgb(212, 176, 186) }
```

If only the background color should be changed can be used:

```
.background{ background-color: rgb(212,  
176, 186) }
```

This example shows the color as background, it is applied via the CSS property "background".

To optimize and compress your CSS code, you can use our [online CSS compressor and optimizer](#) based on csstidy. If you want to create a linear or radial gradient as background or border, check our [CSS Gradient Generator](#).

Hey! You found this booklet interesting? Support Converting Colors with the new Membership Option!

The pro membership hides all ads, plus gives you double the colors in the color bucket, and more awesome pro features!

[Learn more, Memberships starting at \\$2.50/m!](#)

**Follow me
on Twitter!**

@ConvertingColor