

Converting Colors

$Yxy(48.7942, 0.3496, 0.3406)$

Have a look what the booklet for
Yxy(48.7942, 0.3496, 0.3406)
contains.

Yxy(48.9537, 0.3496, 0.3413)	3
<i>Conversions</i>	4
<i>Details</i>	6
<i>Harmonies</i>	12
<i>Previews</i>	24
<i>Color Blindness Simulation</i>	27
<i>CSS Examples</i>	30

Color

Yxy(48.9537, 0.3496, 0.3413)

Conversions

Conversions Part 1

Format	Color
Hex	D3B3A9
RGB	211, 179, 169
RGB Percent	83%, 70%, 66%
CMY	0.1726, 0.2980, 0.3373
CMYK	0.00, 0.15, 0.20, 0.17
HSL	14°, 32%, 75%
HSV	14°, 20%, 83%
XYZ	50.1442, 48.9537, 44.3352
YIQ	187.4280, 22.2820, 3.6740

Conversions

Conversions Part 2

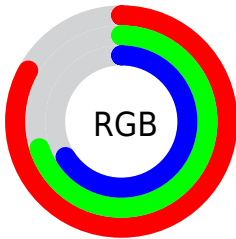
Format	Color
R _Y B	211, 182, 169
Decimal	13874089
CIE Lab	75.42, 9.95, 9.39
CIE LCh	75, 13.681, 43.326
Yxy	48.9537, 0.3496, 0.3413
Android (android.graphics.Color)	4292064169 (0xFFD3B3A9)
YUV	187.4280, -9.0850, 20.6726
Hunter-Lab	69.9669, 5.4860, 11.4072

Details

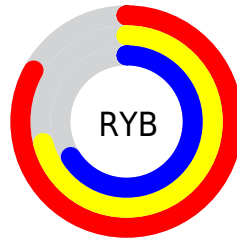
The Yxy color **48.9537, 0.3496, 0.3413** is a light color, and the websafe version is hex **CC9999**. A complement of this color would be **54.9003, 0.2823, 0.3164**, and the grayscale version is **49.9920, 0.3127, 0.3290**.

A 20% lighter version of the original color is **86.0585, 0.3334, 0.3400**, and **23.2740, 0.3602, 0.3438** is the 20% darker color. If you saturate the color by 10%, you get **42.1563, 0.3738, 0.3479**, and if you desaturate by 10%, it is **56.6340, 0.3294, 0.3349**.

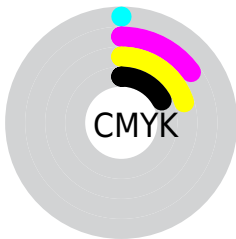
Distribution



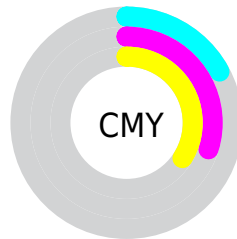
- Red (83%)
- Green (70%)
- Blue (66%)



- Red (83%)
- Yellow (71%)
- Blue (66%)



- Cyan (0%)
- Magenta (15%)
- Yellow (20%)
- Black (17%)





- Cyan (17%)
- Magenta (30%)
- Yellow (34%)

Brightness & Saturation Gradients


These gradients show how the Yxy color 48.9537, 0.3496, 0.3413 changes by changing the brightness by 10 percent. The first figure shows a shift by +10% for each color and the second figure -10%.


Similar to the brightness gradients but the following saturation gradients show a change of the Yxy color 48.9537, 0.3496, 0.3413 by changing the saturation by 10% instead.


 48.9537, 0.3496,
0.3413

 48.9537, 0.3496,
0.3413

382.5600, 0.3312,
0.3355

 34.5828, 0.3542,
0.3427


 88.6227, 0.3429,
0.3392

 23.3416, 0.3601,
0.3444


114.6895, 0.3404,
0.3385

 14.8460, 0.3679,
0.3465

145.4238, 0.3383,
0.3378

 8.7114, 0.3788,
0.3493

181.2098, 0.3364,
0.3372

 4.5534, 0.3949,
0.3531

222.4321, 0.3349,
0.3367

 1.9877, 0.4213,
0.3583

269.4749, 0.3335,

 0.6003, 0.5754,

0.3362

0.4246

322.7228, 0.3323,
0.3358

0.0000, 0.0000,
0.0000

48.9537, 0.3496,
0.3413

48.9537, 0.3496,
0.3413

42.1563, 0.3738,
0.3479

56.6340, 0.3294,
0.3349

36.2032, 0.4024,
0.3545

65.2205, 0.3126,
0.3290

31.0630, 0.4356,
0.3605

74.7442, 0.2986,
0.3234

26.6997, 0.4730,
0.3651

85.2325, 0.2869,
0.3184

23.0743, 0.5127,
0.3674

92.5888, 0.2866,
0.3289

■ 20.1445, 0.5517,
0.3662

■ 17.8632, 0.5856,
0.3610

■ 16.1705, 0.6113,
0.3527

■ 16.1578, 0.6115,
0.3527

Harmonies

Analogous

The Analogous color harmony consists of three colors that are next to each other on the color wheel.



48.9537, 0.3415, 0.3252



48.9537, 0.3496, 0.3413



48.9537, 0.3474, 0.3548

Triad

The Triadic color harmony groups three colors that are evenly spaced from another and form a triangle on the color wheel.



48.9537, 0.3496, 0.3413



48.9537, 0.2994, 0.3486



48.9537, 0.2895, 0.2974

Complementary

The Complementary color scheme is a pair of colors which are on the opposite of each other on the color wheel.



48.9537, 0.3496, 0.3413



54.9003, 0.2823, 0.3164

Split Complementary

Split-complementary colors differ from the complementary color scheme. The scheme consists of three colors, the original color and two neighbors of the complement color.



48.9537, 0.2790, 0.3025



48.9537, 0.3496, 0.3413



48.9537, 0.2846, 0.3319

Square

The Square scheme is like the rectangle color scheme, but the four colors are evenly spaced on the color wheel.



48.9537, 0.3496, 0.3413



48.9537, 0.3181, 0.3598



48.9537, 0.2772, 0.3149



48.9537, 0.3065, 0.3004

Rectangle

The Rectangle color scheme consists of four colors that form a rectangle on the color wheel.



48.9537, 0.3496, 0.3413



48.9537, 0.3405, 0.3604



48.9537, 0.2772, 0.3149



48.9537, 0.2852, 0.2982

Sweetspot

The Sweet Spot groups the original color and five complimentary colors.



48.9559, 0.3496, 0.3413



91.8438, 0.3226, 0.3326



46.4462, 0.3232, 0.2909



19.4751, 0.3237, 0.3330



0.0000, 0.0000, 0.0000



21.4041, 0.3127, 0.3290

Same Dimension

The Same Dimension uses a secret algorithm to generate beautiful new colors.



48.9559, 0.3496, 0.3413



70.4514, 0.3596, 0.3442



57.9270, 0.3449, 0.3657



12.2595, 0.3285, 0.3346



9.8849, 0.6090, 0.3546



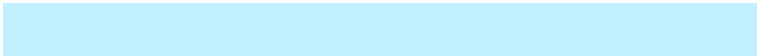
0.6786, 0.5724, 0.3837

Inverse Universe

The Inverse Universe completely reimagines the original color for something new.



54.9003, 0.2823, 0.3164



81.2209, 0.2759, 0.3133



45.8561, 0.2807, 0.2894



12.9092, 0.2983, 0.3233



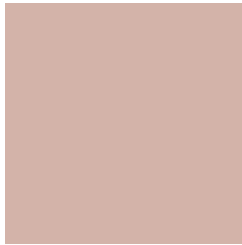
18.3184, 0.2030, 0.2506



1.1423, 0.2074, 0.2666

Previews

White Background



This preview shows how the Yxy color 48.9537, 0.3496, 0.3413 looks on a white background.

Color Contrast Check

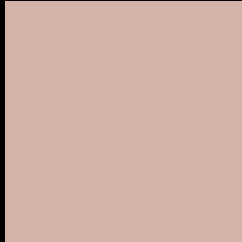
Large Text (above 18pt) WCAG AA × Fail

Any Text WCAG AA × Fail

Large Text (above 18pt) WCAG AAA × Fail

Any Text WCAG AAA × Fail

Black Background



This preview shows how the Yxy color 48.9537, 0.3496, 0.3413 looks on a black background.

Color Contrast Check

Large Text (above 18pt) WCAG AA ✓ Pass

Any Text WCAG AA ✓ Pass

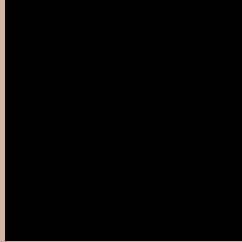
Large Text (above 18pt) WCAG AAA ✓ Pass

Any Text WCAG AAA ✓ Pass

If you want to check with other color combinations, try the [Color Contrast Checker](#).

Yxy 48.9537, 0.3496, 0.3413

Background



This preview shows how black text looks on a background with the Yxy color 48.9537, 0.3496, 0.3413.



This preview shows how white text looks on a background with the Yxy color 48.9537, 0.3496, 0.3413.

Color Blindness Simulation

Color vision deficiency is a very complex topic, and I could not describe the different causes any better than Wikipedia does, so if you want to learn more, you should check out their [article about color blindness](#).

Dichromacy



Original Color

48.9537, 0.3496, 0.3413

Protanopia

48.8829, 0.3290, 0.3456

Deuteranopia

48.8064, 0.3487, 0.3413



Tritanopia

49.0645, 0.3347, 0.3125

Trichromacy



Original Color

48.9537, 0.3496, 0.3413

Protanomaly

48.9494, 0.3363, 0.3441

Deuteranomaly

48.8064, 0.3487, 0.3413

Tritanomaly

48.9678, 0.3405, 0.3231

Monochromacy



Original Color

48.9537, 0.3496, 0.3413

Achromatopsia

49.6933, 0.3127, 0.3290

Achromatomaly

49.3120, 0.3261, 0.3341

CSS Examples

Text

The CSS property to change the color of the text to Yxy 48.9537, 0.3496, 0.3413 is called "color". The color property can be set on classes, ids or directly on the HTML element.

This example shows how text in the color `rgb(211, 179, 169)` looks like.

```
.text, #text, p{  
    color:rgb(211, 179, 169)  
}
```

If you want to add a text shadow in that color use the text-shadow property, you can generate a text shadow directly with our [CSS Text Shadow Generator](#).

Here you see how black text with a 4 pixel rgb(211, 179, 169) colored shadow looks like.

```
.shadow{ text-shadow: 4px 4px 2px rgb(211, 179, 169) }
```

Border

The CSS property to change the border of an element to Yxy 48.9537, 0.3496, 0.3413 is called "border". The border property can be set on classes, ids or directly on the HTML element.

This example shows the color as border, it can be applied via the CSS property "border" or "border-color".

```
.border, #border, table{ border:4px solid rgb(211, 179, 169) }
```

If only the border color should be changed use the property border-color.

```
.border{ border-color:rgb(211, 179, 169) }
```

If you want to add a box shadow in that color use:

Here you see how a box with a 4 pixel rgb(211, 179, 169) colored shadow looks like.

```
.boxshadow{ -moz-box-shadow:4px 4px 4px  
4px rgb(211, 179, 169); -webkit-box-  
shadow:4px 4px 4px 4px rgb(211, 179, 169);  
box-shadow:4px 4px 4px 4px rgb(211, 179,  
169) }
```


Background

The CSS property to change the background color of an element to Yxy 48.9537, 0.3496, 0.3413 is called "background". The background property can be set on classes, ids or directly on the HTML element.

```
.background, #background, body{  
background: rgb(211, 179, 169) }
```

If only the background color should be changed can be used:

```
.background{ background-color: rgb(211,  
179, 169) }
```

This example shows the color as background, it is applied via the CSS property "background".

To optimize and compress your CSS code, you can use our [online CSS compressor and optimizer](#) based on csstidy. If you want to create a linear or radial gradient as background or border, check our [CSS Gradient Generator](#).

Hey! You found this booklet interesting? Support Converting Colors with the new Membership Option!

The pro membership hides all ads, plus gives you double the colors in the color bucket, and more awesome pro features!

[Learn more, Memberships starting at \\$2.50/m!](#)

**Follow me
on Twitter!**

@ConvertingColor