

Converting Colors

$Yxy(48.8420, 0.3278, 0.3322)$

Have a look what the booklet for
Yxy(48.8420, 0.3278, 0.3322)
contains.

Yxy(48.7570, 0.3281, 0.3315)	3
<i>Conversions</i>	4
<i>Details</i>	6
<i>Harmonies</i>	12
<i>Previews</i>	24
<i>Color Blindness Simulation</i>	27
<i>CSS Examples</i>	30

Color

Yxy(48.7570, 0.3281, 0.3315)

Conversions

Conversions Part 1

Format	Color
Hex	C6B6B4
RGB	198, 182, 180
RGB Percent	78%, 71%, 71%
CMY	0.2235, 0.2863, 0.2940
CMYK	0.00, 0.08, 0.09, 0.22
HSL	7°, 14%, 74%
HSV	7°, 9%, 78%
XYZ	48.2569, 48.7570, 50.0660
YIQ	186.5560, 10.1780, 2.7700

Conversions

Conversions Part 2

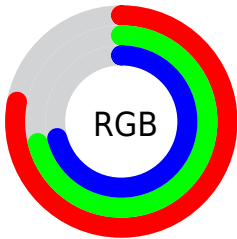
Format	Color
R_{YB}	198, 182, 180
Decimal	13022900
CIE Lab	75.30, 5.35, 3.05
CIE LCh	75, 6.154, 29.663
Yxy	48.7570, 0.3281, 0.3315
Android (android.graphics.Color)	4291212980 (0xFFC6B6B4)
YUV	186.5560, -3.2321, 10.0364
Hunter-Lab	69.8262, 1.1656, 6.3669

Details

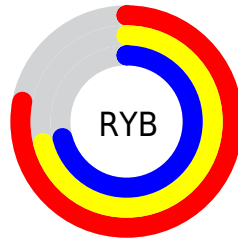
The Yxy color $48.7570, 0.3281, 0.3315$ is a light color, and the websafe version is hex `CCCCCC`. A complement of this color would be $53.2780, 0.2989, 0.3265$, and the grayscale version is $49.4473, 0.3127, 0.3290$.

A 20% lighter version of the original color is $88.4652, 0.3253, 0.3310$, and $23.1621, 0.3327, 0.3324$ is the 20% darker color. If you saturate the color by 10%, you get $41.2358, 0.3487, 0.3345$, and if you desaturate by 10%, it is $57.3070, 0.3113, 0.3288$.

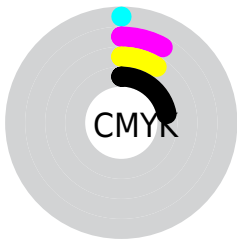
Distribution



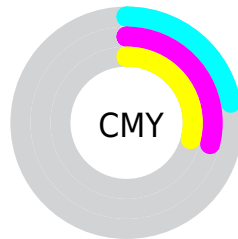
- Red (78%)
- Green (71%)
- Blue (71%)



- Red (78%)
- Yellow (71%)
- Blue (71%)



- Cyan (0%)
- Magenta (8%)
- Yellow (9%)
- Black (22%)





- Cyan (22%)
- Magenta (29%)
- Yellow (29%)

Brightness & Saturation Gradients


These gradients show how the Yxy color 48.7570, 0.3281, 0.3315 changes by changing the brightness by 10 percent. The first figure shows a shift by +10% for each color and the second figure -10%.

Similar to the brightness gradients but the following saturation gradients show a change of the Yxy color 48.7570, 0.3281, 0.3315 by changing the saturation by 10% instead.


 48.7570, 0.3281,
0.3315

 48.7570, 0.3281,
0.3315


381.7849, 0.3204,
0.3303

 34.4268, 0.3300,
0.3318


 88.3304, 0.3253,
0.3311

 23.2216, 0.3324,
0.3321


114.3424, 0.3243,
0.3309

 14.7572, 0.3357,
0.3326


145.0171, 0.3234,
0.3308

 8.6492, 0.3402,
0.3332

180.7389, 0.3226,
0.3307

 4.5131, 0.3470,
0.3340

221.8922, 0.3220,
0.3306

 1.9645, 0.3581,
0.3353

268.8613, 0.3214,

 0.5867, 0.4046,

0.3305

0.3450

322.0308, 0.3209,
0.3304

0.0000, 0.0000,
0.0000

48.7570, 0.3281,
0.3315

48.7570, 0.3281,
0.3315

41.2358, 0.3487,
0.3345

57.3070, 0.3113,
0.3288

34.6985, 0.3740,
0.3375

66.9159, 0.2976,
0.3262

29.1062, 0.4047,
0.3406

77.6205, 0.2864,
0.3240

24.4152, 0.4411,
0.3433

89.1782, 0.2792,
0.3263

20.5781, 0.4827,
0.3453

90.7454, 0.2794,
0.3289

■ 17.5434, 0.5273,
0.3460

■ 15.2539, 0.5704,
0.3448

■ 13.6445, 0.6061,
0.3414

■ 12.6350, 0.6297,
0.3370

Harmonies

Analogous

The Analogous color harmony consists of three colors that are next to each other on the color wheel.



48.7570, 0.3227, 0.3241



48.7570, 0.3281, 0.3315



48.7570, 0.3293, 0.3384

Triad

The Triadic color harmony groups three colors that are evenly spaced from another and form a triangle on the color wheel.



48.7570, 0.3281, 0.3315



48.7570, 0.3106, 0.3404



48.7570, 0.2996, 0.3153

Complementary

The Complementary color scheme is a pair of colors which are on the opposite of each other on the color wheel.



48.7570, 0.3281, 0.3315



53.2780, 0.2989, 0.3265

Split Complementary

Split-complementary colors differ from the complementary color scheme. The scheme consists of three colors, the original color and two neighbors of the complement color.



48.7570, 0.2964, 0.3194



48.7570, 0.3281, 0.3315



48.7570, 0.3027, 0.3339

Square

The Square scheme is like the rectangle color scheme, but the four colors are evenly spaced on the color wheel.



48.7570, 0.3281, 0.3315



48.7570, 0.3191, 0.3436



48.7570, 0.2976, 0.3262



48.7570, 0.3062, 0.3148

Rectangle

The Rectangle color scheme consists of four colors that form a rectangle on the color wheel.



48.7570, 0.3281, 0.3315



48.7570, 0.3275, 0.3417



48.7570, 0.2976, 0.3262



48.7570, 0.2981, 0.3163

Sweetspot

The Sweet Spot groups the original color and five complimentary colors.



48.7591, 0.3281, 0.3315



95.2474, 0.3176, 0.3298



48.6570, 0.3152, 0.3092



20.1212, 0.3189, 0.3300



0.0000, 0.0000, 0.0000



21.4041, 0.3127, 0.3290

Same Dimension

The Same Dimension uses a secret algorithm to generate beautiful new colors.



48.7591, 0.3281, 0.3315



83.4092, 0.3321, 0.3321



52.4820, 0.3270, 0.3424



10.8208, 0.3287, 0.3316



8.2362, 0.6301, 0.3379



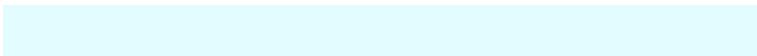
0.4546, 0.6020, 0.3602

Inverse Universe

The Inverse Universe completely reimagines the original color for something new.



53.2780, 0.2989, 0.3265



93.1184, 0.2957, 0.3259



49.4188, 0.2988, 0.3153



11.8614, 0.2984, 0.3264



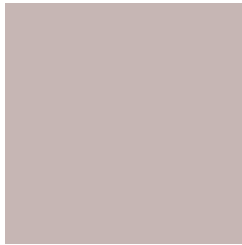
23.0022, 0.2151, 0.2945



1.1473, 0.2173, 0.3023

Previews

White Background



This preview shows how the Yxy color 48.7570, 0.3281, 0.3315 looks on a white background.

Color Contrast Check

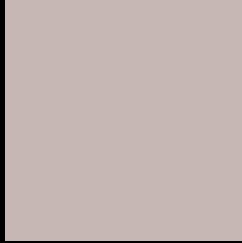
Large Text (above 18pt) WCAG AA × Fail

Any Text WCAG AA × Fail

Large Text (above 18pt) WCAG AAA × Fail

Any Text WCAG AAA × Fail

Black Background



This preview shows how the Yxy color 48.7570, 0.3281, 0.3315 looks on a black background.

Color Contrast Check

Large Text (above 18pt) WCAG AA ✓ Pass

Any Text WCAG AA ✓ Pass

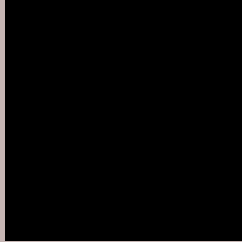
Large Text (above 18pt) WCAG AAA ✓ Pass

Any Text WCAG AAA ✓ Pass

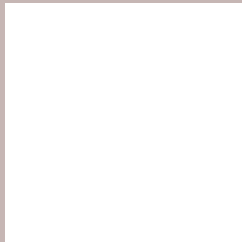
If you want to check with other color combinations, try the [Color Contrast Checker](#).

Yxy 48.7570, 0.3281, 0.3315

Background



This preview shows how black text looks on a background with the Yxy color 48.7570, 0.3281, 0.3315.



This preview shows how white text looks on a background with the Yxy color 48.7570, 0.3281, 0.3315.

Color Blindness Simulation

Color vision deficiency is a very complex topic, and I could not describe the different causes any better than Wikipedia does, so if you want to learn more, you should check out their [article about color blindness](#).

Dichromacy



Original Color

48.7570, 0.3281, 0.3315

Protanopia

49.0225, 0.3193, 0.3328

Deuteranopia

48.5555, 0.3339, 0.3266



Tritanopia

48.8169, 0.3187, 0.3119

Trichromacy



Original Color

48.7570, 0.3281, 0.3315

Protanomaly

48.9546, 0.3227, 0.3328

Deuteranomaly

48.5353, 0.3311, 0.3278

Tritanomaly

48.8640, 0.3218, 0.3192

Monochromacy



Original Color

48.7570, 0.3281, 0.3315

Achromatopsia

49.6933, 0.3127, 0.3290

Achromatomaly

49.2350, 0.3186, 0.3303

CSS Examples

Text

The CSS property to change the color of the text to Yxy 48.7570, 0.3281, 0.3315 is called "color". The color property can be set on classes, ids or directly on the HTML element.

This example shows how text in the color `rgb(198, 182, 180)` looks like.

```
.text, #text, p{  
    color:rgb(198, 182, 180)  
}
```

If you want to add a text shadow in that color use the text-shadow property, you can generate a text shadow directly with our [CSS Text Shadow Generator](#).

Here you see how black text with a 4 pixel rgb(198, 182, 180) colored shadow looks like.

```
.shadow{ text-shadow: 4px 4px 2px rgb(198, 182, 180) }
```

Border

The CSS property to change the border of an element to Yxy 48.7570, 0.3281, 0.3315 is called "border". The border property can be set on classes, ids or directly on the HTML element.

This example shows the color as border, it can be applied via the CSS property "border" or "border-color".

```
.border, #border, table{ border:4px solid rgb(198, 182, 180) }
```

If only the border color should be changed use the property `border-color`.

```
.border{ border-color:rgb(198, 182, 180) }
```

If you want to add a box shadow in that color use:

Here you see how a box with a 4 pixel `rgb(198, 182, 180)` colored shadow looks like.

```
.boxshadow{ -moz-box-shadow:4px 4px 4px  
4px rgb(198, 182, 180); -webkit-box-  
shadow:4px 4px 4px 4px rgb(198, 182, 180);  
box-shadow:4px 4px 4px 4px rgb(198, 182,  
180) }
```


Background

The CSS property to change the background color of an element to Yxy 48.7570, 0.3281, 0.3315 is called "background". The background property can be set on classes, ids or directly on the HTML element.

```
.background, #background, body{  
background: rgb(198, 182, 180) }
```

If only the background color should be changed can be used:

```
.background{ background-color: rgb(198,  
182, 180) }
```

This example shows the color as background, it is applied via the CSS property "background".

To optimize and compress your CSS code, you can use our [online CSS compressor and optimizer](#) based on csstidy. If you want to create a linear or radial gradient as background or border, check our [CSS Gradient Generator](#).

Hey! You found this booklet interesting? Support Converting Colors with the new Membership Option!

The pro membership hides all ads, plus gives you double the colors in the color bucket, and more awesome pro features!

[Learn more, Memberships starting at \\$2.50/m!](#)

**Follow me
on Twitter!**

@ConvertingColor