

# Converting Colors

$Yxy(48.9141, 0.3276, 0.3302)$

Have a look what the booklet for  
Yxy(48.9141, 0.3276, 0.3302)  
contains.

<b>Yxy(48.9342, 0.3282, 0.3303)</b> .....	3
<b>Conversions</b> .....	4
<b>Details</b> .....	6
<b>Harmonies</b> .....	12
<b>Previews</b> .....	24
<b>Color Blindness Simulation</b> .....	27
<b>CSS Examples</b> .....	30

# Color

**Yxy(48.9342, 0.3282, 0.3303)**

# Conversions

## Conversions Part 1

Format	Color
Hex	C7B6B5
RGB	199, 182, 181
RGB Percent	78%, 71%, 71%
CMY	0.2196, 0.2863, 0.2902
CMYK	0.00, 0.09, 0.09, 0.22
HSL	3°, 14%, 75%
HSV	3°, 9%, 78%
XYZ	48.6231, 48.9342, 50.5935
YIQ	186.9690, 10.4530, 3.2930

# Conversions

## Conversions Part 2

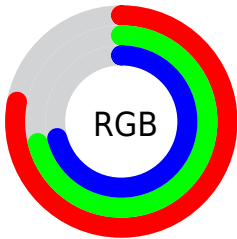
Format	Color
R <sub>Y</sub> B	199, 182, 181
Decimal	13088437
CIE Lab	75.41, 5.88, 2.70
CIE LCh	75, 6.466, 24.639
Yxy	48.9342, 0.3282, 0.3303
Android (android.graphics.Color)	4291278517 (0xFFC7B6B5)
YUV	186.9690, -2.9427, 10.5512
Hunter-Lab	69.9530, 1.6545, 6.0856

# Details

The Yxy color  $48.9342, 0.3282, 0.3303$  is a light color, and the websafe version is hex `CCCCCC`. A complement of this color would be  $54.3360, 0.2989, 0.3277$ , and the grayscale version is  $49.6897, 0.3127, 0.3290$ .

A 20% lighter version of the original color is  $88.5235, 0.3247, 0.3300$ , and  $23.2788, 0.3328, 0.3307$  is the 20% darker color. If you saturate the color by 10%, you get  $40.9915, 0.3492, 0.3319$ , and if you desaturate by 10%, it is  $58.0301, 0.3113, 0.3289$ .

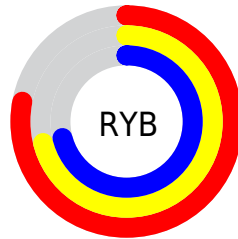
# Distribution



Red (78%)

Green (71%)

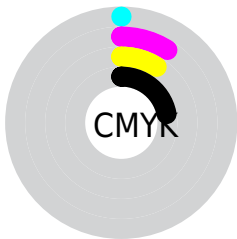
Blue (71%)



Red (78%)

Yellow (71%)

Blue (71%)

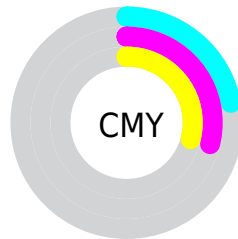


Cyan (0%)

Magenta (9%)

Yellow (9%)

Black (22%)



Cyan (22%)

Magenta (29%)

Yellow (29%)

# Brightness & Saturation Gradients

These gradients show how the Yxy color 48.9342, 0.3282, 0.3303 changes by changing the brightness by 10 percent. The first figure shows a shift by +10% for each color and the second figure -10%.


Similar to the brightness gradients but the following saturation gradients show a change of the Yxy color 48.9342, 0.3282, 0.3303 by changing the saturation by 10% instead.




 48.9342, 0.3282,  
0.3303

 48.9342, 0.3282,  
0.3303

382.4832, 0.3205,  
0.3297

 34.5673, 0.3301,  
0.3304


 88.5937, 0.3254,  
0.3301

 23.3297, 0.3326,  
0.3306

114.6551, 0.3244,  
0.3300

 14.8372, 0.3358,  
0.3308

145.3835, 0.3235,  
0.3299

 8.7052, 0.3404,  
0.3311

181.1631, 0.3227,  
0.3299

 4.5494, 0.3471,  
0.3314

222.3786, 0.3220,  
0.3298

 1.9854, 0.3582,  
0.3318

269.4141, 0.3215,

 0.5990, 0.4015,

0.3298

0.3374

322.6542, 0.3210,  
0.3297

0.0000, 0.0000,  
0.0000

48.9342, 0.3282,  
0.3303

48.9342, 0.3282,  
0.3303

40.9915, 0.3492,  
0.3319

58.0301, 0.3113,  
0.3289

34.1497, 0.3751,  
0.3335

68.3160, 0.2976,  
0.3276

28.3624, 0.4069,  
0.3351

79.8348, 0.2865,  
0.3264

23.5771, 0.4448,  
0.3365

90.8838, 0.2800,  
0.3289

19.7367, 0.4883,  
0.3375

■ 16.7788, 0.5347,  
0.3378

■ 14.6331, 0.5787,  
0.3370

■ 13.2187, 0.6136,  
0.3351

■ 12.4340, 0.6348,  
0.3329

# Harmonies

## Analogous

The Analogous color harmony consists of three colors that are next to each other on the color wheel.



48.9342, 0.3220, 0.3227



48.9342, 0.3282, 0.3303



48.9342, 0.3302, 0.3377

# Triad

The Triadic color harmony groups three colors that are evenly spaced from another and form a triangle on the color wheel.



48.9342, 0.3282, 0.3303



48.9342, 0.3120, 0.3418



48.9342, 0.2981, 0.3151

# Complementary

The Complementary color scheme is a pair of colors which are on the opposite of each other on the color wheel.



48.9342, 0.3282, 0.3303



54.3360, 0.2989, 0.3277

# Split Complementary

Split-complementary colors differ from the complementary color scheme. The scheme consists of three colors, the original color and two neighbors of the complement color.



48.9342, 0.2955, 0.3200



48.9342, 0.3282, 0.3303



48.9342, 0.3035, 0.3355

# Square

The Square scheme is like the rectangle color scheme, but the four colors are evenly spaced on the color wheel.



48.9342, 0.3282, 0.3303



48.9342, 0.3208, 0.3445



48.9342, 0.2975, 0.3274



48.9342, 0.3046, 0.3139



# Rectangle

The Rectangle color scheme consists of four colors that form a rectangle on the color wheel.



48.9342, 0.3282, 0.3303



48.9342, 0.3289, 0.3416



48.9342, 0.2975, 0.3274



48.9342, 0.2967, 0.3163

# Sweetspot

The Sweet Spot groups the original color and five complimentary colors.



48.9364, 0.3282, 0.3303



94.9959, 0.3176, 0.3294



49.2706, 0.3145, 0.3081



20.0537, 0.3189, 0.3295



0.0000, 0.0000, 0.0000



21.4041, 0.3127, 0.3290

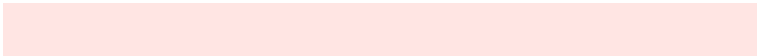


# Same Dimension

The Same Dimension uses a secret algorithm to generate beautiful new colors.



48.9364, 0.3282, 0.3303



82.5779, 0.3323, 0.3306



52.6990, 0.3271, 0.3413



10.7307, 0.3288, 0.3304



8.0063, 0.6354, 0.3337



0.4131, 0.6194, 0.3464

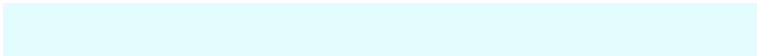


# Inverse Universe

The Inverse Universe completely reimagines the original color for something new.



54.3360, 0.2989, 0.3277



94.0637, 0.2957, 0.3274



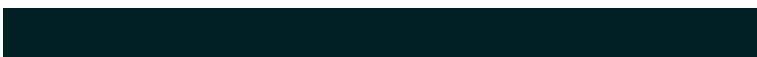
50.3855, 0.2988, 0.3164



11.9617, 0.2984, 0.3276



25.7798, 0.2199, 0.3116

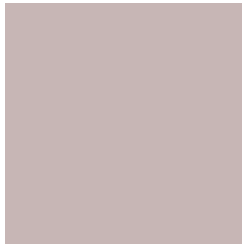


1.2525, 0.2210, 0.3154



# Previews

## White Background



This preview shows how the Yxy color 48.9342, 0.3282, 0.3303 looks on a white background.

## Color Contrast Check

Large Text (above 18pt) WCAG AA × Fail

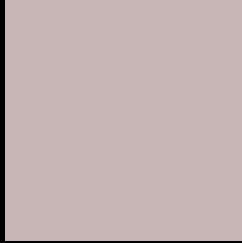
Any Text WCAG AA × Fail

Large Text (above 18pt) WCAG AAA × Fail

Any Text WCAG AAA × Fail



# Black Background



This preview shows how the Yxy color 48.9342, 0.3282, 0.3303 looks on a black background.

## Color Contrast Check

Large Text (above 18pt) WCAG AA ✓ Pass

Any Text WCAG AA ✓ Pass

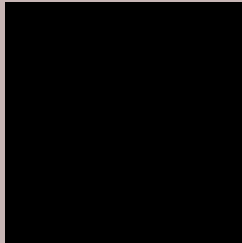
Large Text (above 18pt) WCAG AAA ✓ Pass

Any Text WCAG AAA ✓ Pass

If you want to check with other color combinations, try the [Color Contrast Checker](#).

**Yxy 48.9342, 0.3282, 0.3303**

## Background



This preview shows how black text looks on a background with the Yxy color 48.9342, 0.3282, 0.3303.



This preview shows how white text looks on a background with the Yxy color 48.9342, 0.3282, 0.3303.

# Color Blindness Simulation

Color vision deficiency is a very complex topic, and I could not describe the different causes any better than Wikipedia does, so if you want to learn more, you should check out their [article about color blindness](#).

## Dichromacy



### Original Color

48.9342, 0.3282, 0.3303

### Protanopia

49.0640, 0.3185, 0.3316

### Deuteranopia

48.9578, 0.3337, 0.3278



## Tritanopia

48.9551, 0.3195, 0.3119

# Trichromacy



## Original Color

48.9342, 0.3282, 0.3303

## Protanomaly

48.9958, 0.3219, 0.3316

## Deuteranomaly

49.0805, 0.3318, 0.3291

## Tritanomaly

49.0012, 0.3226, 0.3192

# Monochromacy



## Original Color

48.9342, 0.3282, 0.3303

## Achromatopsia

49.6933, 0.3127, 0.3290

## Achromatomaly

49.2771, 0.3178, 0.3290

# CSS Examples

## Text

The CSS property to change the color of the text to Yxy 48.9342, 0.3282, 0.3303 is called "color". The color property can be set on classes, ids or directly on the HTML element.

This example shows how text in the color `rgb(199, 182, 181)` looks like.

```
.text, #text, p{  
    color:rgb(199, 182, 181)  
}
```

If you want to add a text shadow in that color use the text-shadow property, you can generate a text shadow directly with our [CSS Text Shadow Generator](#).

Here you see how black text with a 4 pixel rgb(199, 182, 181) colored shadow looks like.

```
.shadow{ text-shadow: 4px 4px 2px rgb(199, 182, 181) }
```

## Border

The CSS property to change the border of an element to Yxy 48.9342, 0.3282, 0.3303 is called "border". The border property can be set on classes, ids or directly on the HTML element.

This example shows the color as border, it can be applied via the CSS property "border" or "border-color".

```
.border, #border, table{ border:4px solid rgb(199, 182, 181) }
```

If only the border color should be changed use the property `border-color`.

```
.border{ border-color:rgb(199, 182, 181) }
```

If you want to add a box shadow in that color use:

Here you see how a box with a 4 pixel `rgb(199, 182, 181)` colored shadow looks like.

```
.boxshadow{ -moz-box-shadow:4px 4px 4px  
4px rgb(199, 182, 181); -webkit-box-  
shadow:4px 4px 4px 4px rgb(199, 182, 181);  
box-shadow:4px 4px 4px 4px rgb(199, 182,  
181) }
```



# Background

The CSS property to change the background color of an element to Yxy 48.9342, 0.3282, 0.3303 is called "background". The background property can be set on classes, ids or directly on the HTML element.

```
.background, #background, body{  
background: rgb(199, 182, 181) }
```

If only the background color should be changed can be used:

```
.background{ background-color: rgb(199,  
182, 181) }
```

This example shows the color as background, it is applied via the CSS property "background".

To optimize and compress your CSS code, you can use our [online CSS compressor and optimizer](#) based on csstidy. If you want to create a linear or radial gradient as background or border, check our [CSS Gradient Generator](#).

Hey! You found this booklet interesting? Support Converting Colors with the new Membership Option!

The pro membership hides all ads, plus gives you double the colors in the color bucket, and more awesome pro features!

**[Learn more, Memberships starting at \\$2.50/m!](#)**

**Follow me  
on Twitter!**

@ConvertingColor