

Converting Colors

$Yxy(48.9204, 0.3300, 0.3333)$

Have a look what the booklet for
Yxy(48.9204, 0.3300, 0.3333)
contains.

Yxy(48.8527, 0.3298, 0.3328)	3
<i>Conversions</i>	4
<i>Details</i>	6
<i>Harmonies</i>	12
<i>Previews</i>	24
<i>Color Blindness Simulation</i>	27
<i>CSS Examples</i>	30

Color

Yxy(48.8527, 0.3298, 0.3328)

Conversions

Conversions Part 1

Format	Color
Hex	C7B6B3
RGB	199, 182, 179
RGB Percent	78%, 71%, 70%
CMY	0.2197, 0.2862, 0.2980
CMYK	0.00, 0.09, 0.10, 0.22
HSL	9°, 15%, 74%
HSV	9°, 10%, 78%
XYZ	48.4123, 48.8527, 49.5279
YIQ	186.7410, 11.0950, 2.6710

Conversions

Conversions Part 2

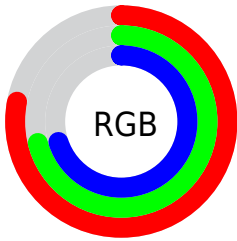
Format	Color
RYB	199, 183, 179
Decimal	13088435
CIELab	75.36, 5.52, 3.70
CIElCh	75, 6.645, 33.869
Yxy	48.8527, 0.3298, 0.3328
Android (android.graphics.Color)	4291278515 (0xFFC7B6B3)
YUV	186.7410, -3.8163, 10.7511
Hunter-Lab	69.8947, 1.3217, 6.9129

Details

The Yxy color $48.8527, 0.3298, 0.3328$ is a light color, and the websafe version is hex `CCCCCC`. A complement of this color would be $53.1694, 0.2974, 0.3252$, and the grayscale version is $49.5572, 0.3127, 0.3290$.

A 20% lighter version of the original color is $88.4072, 0.3260, 0.3320$, and $23.2266, 0.3351, 0.3341$ is the 20% darker color. If you saturate the color by 10%, you get $41.5972, 0.3506, 0.3369$, and if you desaturate by 10%, it is $57.0640, 0.3128, 0.3290$.

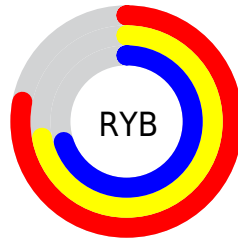
Distribution



Red (78%)

Green (71%)

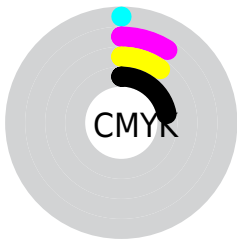
Blue (70%)



Red (78%)

Yellow (72%)

Blue (70%)

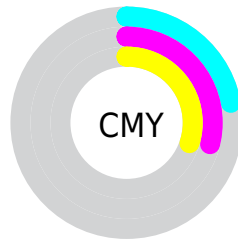


Cyan (0%)

Magenta (9%)

Yellow (10%)

Black (22%)



Cyan (22%)


Magenta (29%)

Yellow (30%)

Brightness & Saturation Gradients


These gradients show how the Yxy color 48.8527, 0.3298, 0.3328 changes by changing the brightness by 10 percent. The first figure shows a shift by +10% for each color and the second figure -10%.


Similar to the brightness gradients but the following saturation gradients show a change of the Yxy color 48.8527, 0.3298, 0.3328 by changing the saturation by 10% instead.

 48.8527, 0.3298,
0.3328

 48.8527, 0.3298,
0.3328

382.1621, 0.3213,
0.3310

 34.5026, 0.3319,
0.3332


 88.4726, 0.3267,
0.3322

 23.2800, 0.3346,
0.3338

114.5113, 0.3256,
0.3319

 14.8004, 0.3382,
0.3345

145.2150, 0.3246,
0.3317

 8.6794, 0.3433,
0.3354

180.9681, 0.3237,
0.3315

 4.5327, 0.3507,
0.3368

222.1549, 0.3230,
0.3314

 1.9758, 0.3631,
0.3388

269.1600, 0.3224,

 0.5933, 0.4161,

0.3312

0.3534

322.3676, 0.3218,
0.3311

0.0000, 0.0000,
0.0000

48.8527, 0.3298,
0.3328

48.8527, 0.3298,
0.3328

41.5972, 0.3506,
0.3369

57.0640, 0.3128,
0.3290

35.2564, 0.3758,
0.3411

66.2573, 0.2988,
0.3255

29.7960, 0.4062,
0.3452

76.4661, 0.2873,
0.3224

25.1766, 0.4419,
0.3490

87.4865, 0.2795,
0.3232

21.3564, 0.4824,
0.3517

90.8782, 0.2800,
0.3289

■ 18.2894, 0.5256,
0.3526

■ 15.9253, 0.5674,
0.3510

■ 14.2072, 0.6022,
0.3467

■ 13.0660, 0.6264,
0.3409

Harmonies

Analogous

The Analogous color harmony consists of three colors that are next to each other on the color wheel.



48.8527, 0.3246, 0.3248



48.8527, 0.3298, 0.3328



48.8527, 0.3304, 0.3400

Triad

The Triadic color harmony groups three colors that are evenly spaced from another and form a triangle on the color wheel.



48.8527, 0.3298, 0.3328



48.8527, 0.3091, 0.3405



48.8527, 0.2994, 0.3139

Complementary

The Complementary color scheme is a pair of colors which are on the opposite of each other on the color wheel.



48.8527, 0.3298, 0.3328



53.1694, 0.2974, 0.3252

Split Complementary

Split-complementary colors differ from the complementary color scheme. The scheme consists of three colors, the original color and two neighbors of the complement color.



48.8527, 0.2954, 0.3178



48.8527, 0.3298, 0.3328



48.8527, 0.3009, 0.3332

Square

The Square scheme is like the rectangle color scheme, but the four colors are evenly spaced on the color wheel.



48.8527, 0.3298, 0.3328



48.8527, 0.3183, 0.3446



48.8527, 0.2959, 0.3248



48.8527, 0.3069, 0.3140

Rectangle

The Rectangle color scheme consists of four colors that form a rectangle on the color wheel.



48.8527, 0.3298, 0.3328



48.8527, 0.3280, 0.3433



48.8527, 0.2959, 0.3248



48.8527, 0.2976, 0.3148

Sweetspot

The Sweet Spot groups the original color and five complimentary colors.



48.8549, 0.3298, 0.3328



95.4415, 0.3175, 0.3301



48.3650, 0.3163, 0.3082



20.1734, 0.3189, 0.3304



0.0000, 0.0000, 0.0000



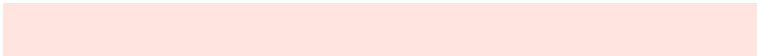
21.4041, 0.3127, 0.3290

Same Dimension

The Same Dimension uses a secret algorithm to generate beautiful new colors.



48.8549, 0.3298, 0.3328



82.7085, 0.3339, 0.3337



53.0850, 0.3284, 0.3450



10.8907, 0.3286, 0.3325



8.4857, 0.6246, 0.3423



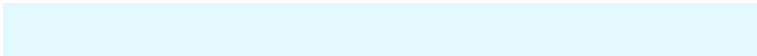
0.4865, 0.5897, 0.3699

Inverse Universe

The Inverse Universe completely reimagines the original color for something new.



53.1694, 0.2974, 0.3252



91.7442, 0.2942, 0.3243



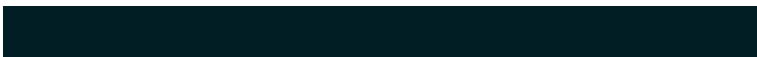
48.8216, 0.2973, 0.3124



11.7847, 0.2984, 0.3254



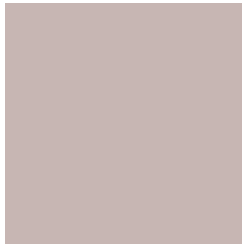
21.0027, 0.2114, 0.2809



1.0704, 0.2144, 0.2919

Previews

White Background



This preview shows how the Yxy color 48.8527, 0.3298, 0.3328 looks on a white background.

Color Contrast Check

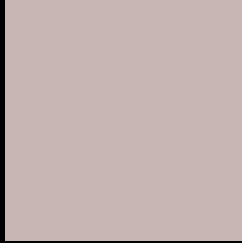
Large Text (above 18pt) WCAG AA × Fail

Any Text WCAG AA × Fail

Large Text (above 18pt) WCAG AAA × Fail

Any Text WCAG AAA × Fail

Black Background



This preview shows how the Yxy color 48.8527, 0.3298, 0.3328 looks on a black background.

Color Contrast Check

Large Text (above 18pt) WCAG AA ✓ Pass

Any Text WCAG AA ✓ Pass

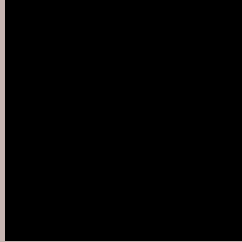
Large Text (above 18pt) WCAG AAA ✓ Pass

Any Text WCAG AAA ✓ Pass

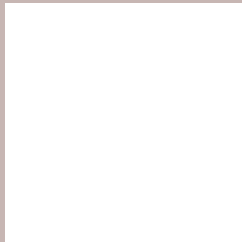
If you want to check with other color combinations, try the [Color Contrast Checker](#).

Yxy 48.8527, 0.3298, 0.3328

Background



This preview shows how black text looks on a background with the Yxy color 48.8527, 0.3298, 0.3328.



This preview shows how white text looks on a background with the Yxy color 48.8527, 0.3298, 0.3328.

Color Blindness Simulation

Color vision deficiency is a very complex topic, and I could not describe the different causes any better than Wikipedia does, so if you want to learn more, you should check out their [article about color blindness](#).

Dichromacy



Original Color

48.8527, 0.3298, 0.3328

Protanopia

48.9813, 0.3201, 0.3341

Deuteranopia

48.6167, 0.3365, 0.3291



Tritanopia

48.9551, 0.3195, 0.3119

Trichromacy



Original Color

48.8527, 0.3298, 0.3328

Protanomaly

48.9137, 0.3236, 0.3341

Deuteranomaly

48.5937, 0.3336, 0.3303

Tritanomaly

49.0012, 0.3226, 0.3192

Monochromacy



Original Color

48.8527, 0.3298, 0.3328

Achromatopsia

49.6933, 0.3127, 0.3290

Achromatomaly

49.2350, 0.3186, 0.3303

CSS Examples

Text

The CSS property to change the color of the text to Yxy 48.8527, 0.3298, 0.3328 is called "color". The color property can be set on classes, ids or directly on the HTML element.

This example shows how text in the color `rgb(199, 182, 179)` looks like.

```
.text, #text, p{  
    color:rgb(199, 182, 179)  
}
```

If you want to add a text shadow in that color use the text-shadow property, you can generate a text shadow directly with our [CSS Text Shadow Generator](#).

Here you see how black text with a 4 pixel rgb(199, 182, 179) colored shadow looks like.

```
.shadow{ text-shadow: 4px 4px 2px rgb(199, 182, 179) }
```

Border

The CSS property to change the border of an element to Yxy 48.8527, 0.3298, 0.3328 is called "border". The border property can be set on classes, ids or directly on the HTML element.

This example shows the color as border, it can be applied via the CSS property "border" or "border-color".

```
.border, #border, table{ border:4px solid rgb(199, 182, 179) }
```

If only the border color should be changed use the property `border-color`.

```
.border{ border-color:rgb(199, 182, 179) }
```

If you want to add a box shadow in that color use:

Here you see how a box with a 4 pixel `rgb(199, 182, 179)` colored shadow looks like.

```
.boxshadow{ -moz-box-shadow:4px 4px 4px  
4px rgb(199, 182, 179); -webkit-box-  
shadow:4px 4px 4px 4px rgb(199, 182, 179);  
box-shadow:4px 4px 4px 4px rgb(199, 182,  
179) }
```


Background

The CSS property to change the background color of an element to Yxy 48.8527, 0.3298, 0.3328 is called "background". The background property can be set on classes, ids or directly on the HTML element.

```
.background, #background, body{  
background: rgb(199, 182, 179) }
```

If only the background color should be changed can be used:

```
.background{ background-color: rgb(199,  
182, 179) }
```

This example shows the color as background, it is applied via the CSS property "background".

To optimize and compress your CSS code, you can use our [online CSS compressor and optimizer](#) based on csstidy. If you want to create a linear or radial gradient as background or border, check our [CSS Gradient Generator](#).

Hey! You found this booklet interesting? Support Converting Colors with the new Membership Option!

The pro membership hides all ads, plus gives you double the colors in the color bucket, and more awesome pro features!

[Learn more, Memberships starting at \\$2.50/m!](#)

**Follow me
on Twitter!**

@ConvertingColor