

Converting Colors

$Yxy(48.9828, 0.3850, 0.3779)$

Have a look what the booklet for
Yxy(48.9828, 0.3850, 0.3779)
contains.

Yxy(49.1352, 0.3841, 0.3781)	3
<i>Conversions</i>	4
<i>Details</i>	6
<i>Harmonies</i>	12
<i>Previews</i>	24
<i>Color Blindness Simulation</i>	27
<i>CSS Examples</i>	30

Color

Yxy(49.1352, 0.3841, 0.3781)

Conversions

Conversions Part 1

Format	Color
Hex	DBB38A
RGB	219, 179, 138
RGB Percent	86%, 70%, 54%
CMY	0.1413, 0.2980, 0.4588
CMYK	0.00, 0.18, 0.37, 0.14
HSL	30°, 53%, 70%
HSV	30°, 37%, 86%
XYZ	49.9149, 49.1352, 30.9028
YIQ	186.2860, 37.0010, -4.2710

Conversions

Conversions Part 2

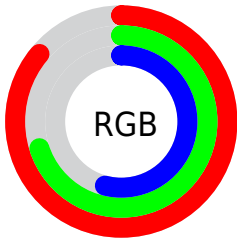
Format	Color
RYB	217, 219, 138
Decimal	14398346
CIELab	75.54, 8.85, 26.39
CIELCh	76, 27.830, 71.459
Yxy	49.1352, 0.3841, 0.3781
Android (android.graphics.Color)	4292588426 (0xFFDDBB38A)
YUV	186.2860, -23.8050, 28.6902
Hunter-Lab	70.0965, 4.4389, 22.9289

Details

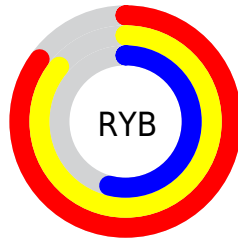
The Yxy color $49.1352, 0.3841, 0.3781$ is a light color, and the websafe version is hex `FFCC99`. A complement of this color would be $42.3453, 0.2534, 0.2738$, and the grayscale version is $49.3925, 0.3127, 0.3290$.

A 20% lighter version of the original color is $84.4824, 0.3546, 0.3724$, and $23.4128, 0.4040, 0.3889$ is the 20% darker color. If you saturate the color by 10%, you get $44.4018, 0.4089, 0.3912$, and if you desaturate by 10%, it is $54.3406, 0.3616, 0.3644$.

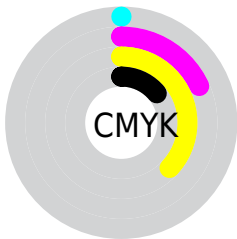
Distribution



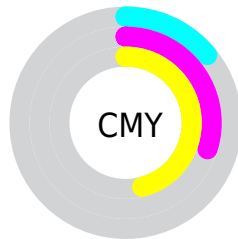
- Red (86%)
- Green (70%)
- Blue (54%)



- Red (85%)
- Yellow (86%)
- Blue (54%)



- Cyan (0%)
- Magenta (18%)
- Yellow (37%)
- Black (14%)





- Cyan (14%)
- Magenta (30%)
- Yellow (46%)

Brightness & Saturation Gradients

These gradients show how the Yxy color 49.1352, 0.3841, 0.3781 changes by changing the brightness by 10 percent. The first figure shows a shift by +10% for each color and the second figure -10%.


Similar to the brightness gradients but the following saturation gradients show a change of the Yxy color 49.1352, 0.3841, 0.3781 by changing the saturation by 10% instead.


 49.1352, 0.3841,
0.3781

 49.1352, 0.3841,
0.3781


383.2743, 0.3487,
0.3547


 34.7267, 0.3927,
0.3835


 88.8922, 0.3714,
0.3699

 23.4525, 0.4036,
0.3901


 115.0096, 0.3666,
0.3668

 14.9280, 0.4178,
0.3983

 145.7987, 0.3625,
0.3640

 8.7688, 0.4367,
0.4087

181.6439, 0.3589,
0.3617

 4.5907, 0.4630,
0.4214

222.9297, 0.3559,
0.3596

 2.0092, 0.5311,
0.4625

270.0405, 0.3532,

 0.6128, 0.5658,

0.3578

0.4342

323.3605, 0.3508,
0.3562

0.0000, 0.0000,
0.0000

49.1352, 0.3841,
0.3781

49.1352, 0.3841,
0.3781

44.4018, 0.4089,
0.3912

54.3406, 0.3616,
0.3644

40.1180, 0.4354,
0.4029

60.0257, 0.3415,
0.3508

36.2696, 0.4628,
0.4119

66.2065, 0.3237,
0.3377

32.8385, 0.4895,
0.4169

72.8963, 0.3082,
0.3253

29.8047, 0.5140,
0.4168

80.1076, 0.2947,
0.3139

■ 27.1443, 0.5346,
0.4113

■ 86.8904, 0.2908,
0.3175

■ 26.4031, 0.5404,
0.4091

■ 93.5806, 0.2911,
0.3286

■ 93.7954, 0.2911,
0.3289

Harmonies

Analogous

The Analogous color harmony consists of three colors that are next to each other on the color wheel.



49.1352, 0.3879, 0.3497



49.1352, 0.3841, 0.3781



49.1352, 0.3605, 0.3957

Triad

The Triadic color harmony groups three colors that are evenly spaced from another and form a triangle on the color wheel.



49.1352, 0.3841, 0.3781



49.1352, 0.2578, 0.3362



49.1352, 0.2970, 0.2725

Complementary

The Complementary color scheme is a pair of colors which are on the opposite of each other on the color wheel.



49.1352, 0.3841, 0.3781



42.3453, 0.2534, 0.2738

Split Complementary

Split-complementary colors differ from the complementary color scheme. The scheme consists of three colors, the original color and two neighbors of the complement color.



49.1352, 0.2644, 0.2668



49.1352, 0.3841, 0.3781



49.1352, 0.2429, 0.3008

Square

The Square scheme is like the rectangle color scheme, but the four colors are evenly spaced on the color wheel.



49.1352, 0.3841, 0.3781



49.1352, 0.2873, 0.3720



49.1352, 0.2453, 0.2763



49.1352, 0.3358, 0.2910

Rectangle

The Rectangle color scheme consists of four colors that form a rectangle on the color wheel.



49.1352, 0.3841, 0.3781



49.1352, 0.3374, 0.3973



49.1352, 0.2453, 0.2763



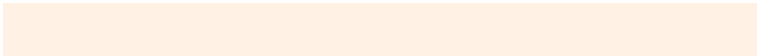
49.1352, 0.2850, 0.2690

Sweetspot

The Sweet Spot groups the original color and five complimentary colors.



49.1375, 0.3841, 0.3781



89.8067, 0.3308, 0.3430



36.4706, 0.3573, 0.2809



18.9665, 0.3332, 0.3448



0.0000, 0.0000, 0.0000



21.4041, 0.3127, 0.3290

Same Dimension

The Same Dimension uses a secret algorithm to generate beautiful new colors.



49.1375, 0.3841, 0.3781



64.3729, 0.4023, 0.3879



67.5380, 0.3680, 0.4205



14.1361, 0.3279, 0.3409



15.8803, 0.5381, 0.4109



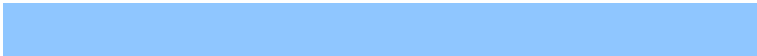
1.2012, 0.5136, 0.4304

Inverse Universe

The Inverse Universe completely reimagines the original color for something new.



42.3453, 0.2534, 0.2738



53.5093, 0.2414, 0.2605



28.6984, 0.2453, 0.2176



13.6732, 0.2982, 0.3169



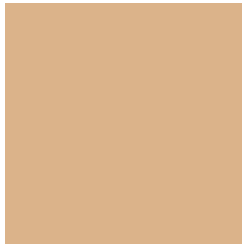
9.6209, 0.1768, 0.1564



0.7956, 0.1851, 0.1862

Previews

White Background



This preview shows how the Yxy color 49.1352, 0.3841, 0.3781 looks on a white background.

Color Contrast Check

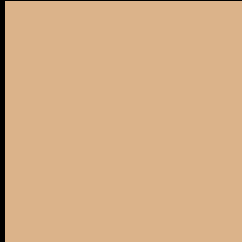
Large Text (above 18pt) WCAG AA × Fail

Any Text WCAG AA × Fail

Large Text (above 18pt) WCAG AAA × Fail

Any Text WCAG AAA × Fail

Black Background



This preview shows how the Yxy color 49.1352, 0.3841, 0.3781 looks on a black background.

Color Contrast Check

Large Text (above 18pt) WCAG AA ✓ Pass

Any Text WCAG AA ✓ Pass

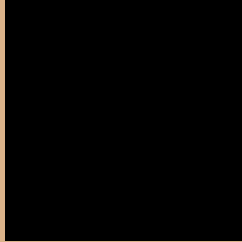
Large Text (above 18pt) WCAG AAA ✓ Pass

Any Text WCAG AAA ✓ Pass

If you want to check with other color combinations, try the [Color Contrast Checker](#).

Yxy 49.1352, 0.3841, 0.3781

Background



This preview shows how black text looks on a background with the Yxy color 49.1352, 0.3841, 0.3781.



This preview shows how white text looks on a background with the Yxy color 49.1352, 0.3841, 0.3781.

Color Blindness Simulation

Color vision deficiency is a very complex topic, and I could not describe the different causes any better than Wikipedia does, so if you want to learn more, you should check out their [article about color blindness](#).

Dichromacy



Original Color

49.1352, 0.3841, 0.3781

Protanopia

49.1830, 0.3605, 0.3861

Deuteranopia

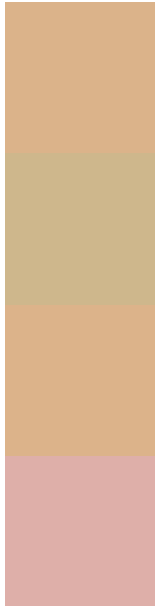
49.2908, 0.3851, 0.3779



Tritanopia

49.2796, 0.3476, 0.3140

Trichromacy



Original Color

49.1352, 0.3841, 0.3781

Protanomaly

48.8822, 0.3688, 0.3826

Deuteranomaly

49.2908, 0.3851, 0.3779

Tritanomaly

49.0541, 0.3606, 0.3362

Monochromacy



Original Color

49.1352, 0.3841, 0.3781

Achromatopsia

49.1021, 0.3127, 0.3290

Achromatomaly

48.7373, 0.3371, 0.3467

CSS Examples

Text

The CSS property to change the color of the text to Yxy 49.1352, 0.3841, 0.3781 is called "color". The color property can be set on classes, ids or directly on the HTML element.

This example shows how text in the color `rgb(219, 179, 138)` looks like.

```
.text, #text, p{  
    color:rgb(219, 179, 138)  
}
```

If you want to add a text shadow in that color use the text-shadow property, you can generate a text shadow directly with our [CSS Text Shadow Generator](#).

Here you see how black text with a 4 pixel rgb(219, 179, 138) colored shadow looks like.

```
.shadow{ text-shadow: 4px 4px 2px rgb(219, 179, 138) }
```

Border

The CSS property to change the border of an element to Yxy 49.1352, 0.3841, 0.3781 is called "border". The border property can be set on classes, ids or directly on the HTML element.

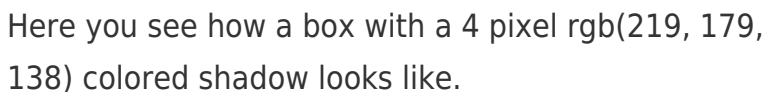
This example shows the color as border, it can be applied via the CSS property "border" or "border-color".

```
.border, #border, table{ border:4px solid rgb(219, 179, 138) }
```

If only the border color should be changed use the property `border-color`.

```
.border{ border-color:rgb(219, 179, 138) }
```

If you want to add a box shadow in that color use:



Here you see how a box with a 4 pixel `rgb(219, 179, 138)` colored shadow looks like.

```
.boxshadow{ -moz-box-shadow:4px 4px 4px 4px rgb(219, 179, 138); -webkit-box-shadow:4px 4px 4px 4px rgb(219, 179, 138); box-shadow:4px 4px 4px 4px rgb(219, 179, 138) }
```


Background

The CSS property to change the background color of an element to Yxy 49.1352, 0.3841, 0.3781 is called "background". The background property can be set on classes, ids or directly on the HTML element.

```
.background, #background, body{  
background: rgb(219, 179, 138) }
```

If only the background color should be changed can be used:

```
.background{ background-color: rgb(219,  
179, 138) }
```

This example shows the color as background, it is applied via the CSS property "background".

To optimize and compress your CSS code, you can use our [online CSS compressor and optimizer](#) based on csstidy. If you want to create a linear or radial gradient as background or border, check our [CSS Gradient Generator](#).

Hey! You found this booklet interesting? Support Converting Colors with the new Membership Option!

The pro membership hides all ads, plus gives you double the colors in the color bucket, and more awesome pro features!

[Learn more, Memberships starting at \\$2.50/m!](#)

**Follow me
on Twitter!**

@ConvertingColor