

# Converting Colors

$Yxy(49.0844, 0.3389, 0.3327)$

Have a look what the booklet for  
Yxy(49.0844, 0.3389, 0.3327)  
contains.

<b>Yxy(49.0822, 0.3389, 0.3327)</b> .....	3
<b>Conversions</b> .....	4
<b>Details</b> .....	6
<b>Harmonies</b> .....	12
<b>Previews</b> .....	24
<b>Color Blindness Simulation</b> .....	27
<b>CSS Examples</b> .....	30

# Color

**Yxy(49.0822, 0.3389, 0.3327)**

# Conversions

## Conversions Part 1

Format	Color
Hex	CFB4B1
RGB	207, 180, 177
RGB Percent	81%, 71%, 69%
CMY	0.1881, 0.2941, 0.3058
CMYK	0.00, 0.13, 0.14, 0.19
HSL	6°, 24%, 75%
HSV	6°, 14%, 81%
XYZ	49.9969, 49.0822, 48.4478
YIQ	187.7310, 17.0550, 4.7910

# Conversions

## Conversions Part 2

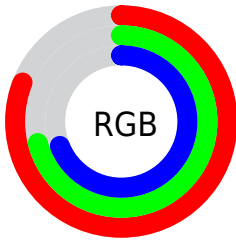
<b>Format</b>	<b>Color</b>
R <sub>Y</sub> B	207, 180, 177
Decimal	13612209
CIE Lab	75.50, 9.21, 5.08
CIE LCh	76, 10.518, 28.856
Yxy	49.0822, 0.3389, 0.3327
Android (android.graphics.Color)	4291802289 (0xFFCFB4B1)
YUV	187.7310, -5.2904, 16.8989
Hunter-Lab	70.0587, 4.7825, 8.0401

# Details

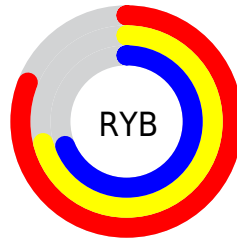
The Yxy color  $49.0822, 0.3389, 0.3327$  is a light color, and the websafe version is hex `CCCCCC`. A complement of this color would be  $57.0725, 0.2907, 0.3253$ , and the grayscale version is  $50.1556, 0.3127, 0.3290$ .

A 20% lighter version of the original color is  $87.1341, 0.3275, 0.3320$ , and  $23.3094, 0.3465, 0.3340$  is the 20% darker color. If you saturate the color by 10%, you get  $41.2879, 0.3621, 0.3355$ , and if you desaturate by 10%, it is  $58.0200, 0.3200, 0.3301$ .

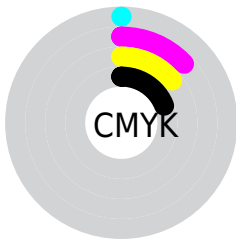
# Distribution



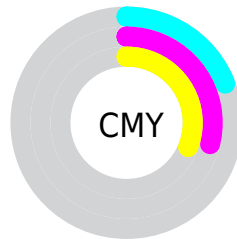
- Red (81%)
- Green (71%)
- Blue (69%)



- Red (81%)
- Yellow (71%)
- Blue (69%)



- Cyan (0%)
- Magenta (13%)
- Yellow (14%)
- Black (19%)




- Cyan (19%)
- Magenta (29%)
- Yellow (31%)


# Brightness & Saturation Gradients

These gradients show how the Yxy color 49.0822, 0.3389, 0.3327 changes by changing the brightness by 10 percent. The first figure shows a shift by +10% for each color and the second figure -10%.

Similar to the brightness gradients but the following saturation gradients show a change of the Yxy color 49.0822, 0.3389, 0.3327 by changing the saturation by 10% instead.





 49.0822, 0.3389,  
0.3327

 49.0822, 0.3389,  
0.3327

383.0658, 0.3259,  
0.3310

 34.6847, 0.3421,  
0.3331


 88.8135, 0.3342,  
0.3321

 23.4201, 0.3463,  
0.3335

114.9161, 0.3324,  
0.3319

 14.9040, 0.3518,  
0.3341


145.6892, 0.3309,  
0.3317

 8.7520, 0.3596,  
0.3349

181.5172, 0.3296,  
0.3315

 4.5798, 0.3710,  
0.3358

222.7845, 0.3285,  
0.3314

 2.0029, 0.3899,  
0.3369

269.8754, 0.3275,

 0.6092, 0.4670,

0.3312

0.3539

323.1744, 0.3266,  
0.3311

0.0000, 0.0000,  
0.0000

49.0822, 0.3389,  
0.3327

49.0822, 0.3389,  
0.3327

41.2879, 0.3621,  
0.3355

58.0200, 0.3200,  
0.3301

34.5848, 0.3906,  
0.3383

68.1381, 0.3046,  
0.3277

28.9261, 0.4248,  
0.3409

79.4795, 0.2921,  
0.3255

24.2590, 0.4647,  
0.3431

91.7676, 0.2844,  
0.3285

20.5264, 0.5089,  
0.3443

92.0093, 0.2844,  
0.3289

■ 17.6650, 0.5538,  
0.3439

■ 15.6039, 0.5937,  
0.3416

■ 14.2607, 0.6223,  
0.3376

■ 13.7859, 0.6329,  
0.3356

# Harmonies

## Analogous

The Analogous color harmony consists of three colors that are next to each other on the color wheel.



49.0822, 0.3295, 0.3203



49.0822, 0.3389, 0.3327



49.0822, 0.3411, 0.3444

# Triad

The Triadic color harmony groups three colors that are evenly spaced from another and form a triangle on the color wheel.



49.0822, 0.3389, 0.3327



49.0822, 0.3093, 0.3488



49.0822, 0.2902, 0.3058

# Complementary

The Complementary color scheme is a pair of colors which are on the opposite of each other on the color wheel.



49.0822, 0.3389, 0.3327



57.0725, 0.2907, 0.3253

# Split Complementary

Split-complementary colors differ from the complementary color scheme. The scheme consists of three colors, the original color and two neighbors of the complement color.



49.0822, 0.2851, 0.3127



49.0822, 0.3389, 0.3327



49.0822, 0.2960, 0.3377

# Square

The Square scheme is like the rectangle color scheme, but the four colors are evenly spaced on the color wheel.



49.0822, 0.3389, 0.3327



49.0822, 0.3238, 0.3542



49.0822, 0.2872, 0.3244



49.0822, 0.3012, 0.3050



# Rectangle

The Rectangle color scheme consists of four colors that form a rectangle on the color wheel.



49.0822, 0.3389, 0.3327



49.0822, 0.3382, 0.3504



49.0822, 0.2872, 0.3244



49.0822, 0.2877, 0.3074

# Sweetspot

The Sweet Spot groups the original color and five complimentary colors.



49.0844, 0.3389, 0.3327



93.6351, 0.3193, 0.3300



49.1098, 0.3164, 0.2964



19.7930, 0.3205, 0.3302



0.0000, 0.0000, 0.0000



21.4041, 0.3127, 0.3290



# Same Dimension

The Same Dimension uses a secret algorithm to generate beautiful new colors.



49.0844, 0.3389, 0.3327



75.0735, 0.3447, 0.3334



55.2637, 0.3364, 0.3501



11.9935, 0.3288, 0.3314



8.7473, 0.6316, 0.3367



0.5548, 0.6083, 0.3552

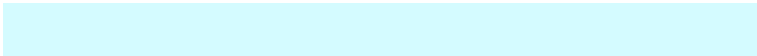


# Inverse Universe

The Inverse Universe completely reimagines the original color for something new.



57.0725, 0.2907, 0.3253



89.9824, 0.2868, 0.3245



50.4795, 0.2901, 0.3069



13.1990, 0.2983, 0.3266



25.1877, 0.2161, 0.2979

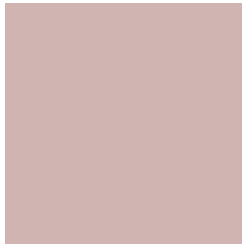


1.4675, 0.2178, 0.3041



# Previews

## White Background



This preview shows how the Yxy color 49.0822, 0.3389, 0.3327 looks on a white background.

## Color Contrast Check

Large Text (above 18pt) WCAG AA × Fail

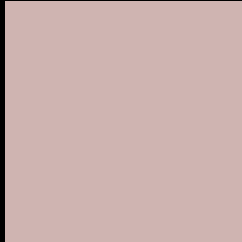
Any Text WCAG AA × Fail

Large Text (above 18pt) WCAG AAA × Fail

Any Text WCAG AAA × Fail



# Black Background



This preview shows how the Yxy color 49.0822, 0.3389, 0.3327 looks on a black background.

## Color Contrast Check

Large Text (above 18pt) WCAG AA ✓ Pass

Any Text WCAG AA ✓ Pass

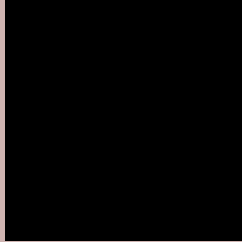
Large Text (above 18pt) WCAG AAA ✓ Pass

Any Text WCAG AAA ✓ Pass

If you want to check with other color combinations, try the [Color Contrast Checker](#).

**Yxy 49.0822, 0.3389, 0.3327**

## Background



This preview shows how black text looks on a background with the Yxy color 49.0822, 0.3389, 0.3327.



This preview shows how white text looks on a background with the Yxy color 49.0822, 0.3389, 0.3327.

# Color Blindness Simulation

Color vision deficiency is a very complex topic, and I could not describe the different causes any better than Wikipedia does, so if you want to learn more, you should check out their [article about color blindness](#).

## Dichromacy



### Original Color

49.0822, 0.3389, 0.3327

### Protanopia

49.0696, 0.3217, 0.3354

### Deuteranopia

49.0822, 0.3389, 0.3327



## Tritanopia

49.2019, 0.3283, 0.3123

# Trichromacy



## Original Color

49.0822, 0.3389, 0.3327

## Protanomaly

48.9920, 0.3279, 0.3341

## Deuteranomaly

49.0822, 0.3389, 0.3327

## Tritanomaly

49.2380, 0.3315, 0.3194

# Monochromacy



## Original Color

49.0822, 0.3389, 0.3327

## Achromatopsia

50.2886, 0.3127, 0.3290

## Achromatomaly

49.7607, 0.3220, 0.3303

# CSS Examples

## Text

The CSS property to change the color of the text to Yxy 49.0822, 0.3389, 0.3327 is called "color". The color property can be set on classes, ids or directly on the HTML element.

This example shows how text in the color `rgb(207, 180, 177)` looks like.

```
.text, #text, p{  
  color:rgb(207, 180, 177)  
}
```

If you want to add a text shadow in that color use the text-shadow property, you can generate a text shadow directly with our [CSS Text Shadow Generator](#).

Here you see how black text with a 4 pixel rgb(207, 180, 177) colored shadow looks like.

```
.shadow{ text-shadow: 4px 4px 2px rgb(207, 180, 177) }
```

## Border

The CSS property to change the border of an element to Yxy 49.0822, 0.3389, 0.3327 is called "border". The border property can be set on classes, ids or directly on the HTML element.

This example shows the color as border, it can be applied via the CSS property "border" or "border-color".

```
.border, #border, table{ border:4px solid rgb(207, 180, 177) }
```

If only the border color should be changed use the property `border-color`.

```
.border{ border-color:rgb(207, 180, 177) }
```

If you want to add a box shadow in that color use:

Here you see how a box with a 4 pixel `rgb(207, 180, 177)` colored shadow looks like.

```
.boxshadow{ -moz-box-shadow:4px 4px 4px  
4px rgb(207, 180, 177); -webkit-box-  
shadow:4px 4px 4px 4px rgb(207, 180, 177);  
box-shadow:4px 4px 4px 4px rgb(207, 180,  
177) }
```



# Background

The CSS property to change the background color of an element to Yxy 49.0822, 0.3389, 0.3327 is called "background". The background property can be set on classes, ids or directly on the HTML element.

```
.background, #background, body{  
background: rgb(207, 180, 177) }
```

If only the background color should be changed can be used:

```
.background{ background-color: rgb(207,  
180, 177) }
```

This example shows the color as background, it is applied via the CSS property "background".

To optimize and compress your CSS code, you can use our [online CSS compressor and optimizer](#) based on csstidy. If you want to create a linear or radial gradient as background or border, check our [CSS Gradient Generator](#).

Hey! You found this booklet interesting? Support Converting Colors with the new Membership Option!

The pro membership hides all ads, plus gives you double the colors in the color bucket, and more awesome pro features!

**[Learn more, Memberships starting at \\$2.50/m!](#)**

**Follow me  
on Twitter!**

@ConvertingColor