

Converting Colors

$Y_{xy}(49.1062, 0.3373, 0.3255)$

Have a look what the booklet for
Yxy(49.1062, 0.3373, 0.3255)
contains.

Yxy(49.1729, 0.3366, 0.3254)	3
Conversions	4
Details	6
Harmonies	12
Previews	24
Color Blindness Simulation	27
CSS Examples	30

Color

Yxy(49.1729, 0.3366, 0.3254)

Conversions

Conversions Part 1

Format	Color
Hex	D1B3B6
RGB	209, 179, 182
RGB Percent	82%, 70%, 71%
CMY	0.1803, 0.2981, 0.2862
CMYK	0.00, 0.14, 0.13, 0.18
HSL	354°, 25%, 76%
HSV	354°, 14%, 82%
XYZ	50.8654, 49.1729, 51.0770
YIQ	188.3120, 16.9170, 7.2930

Conversions

Conversions Part 2

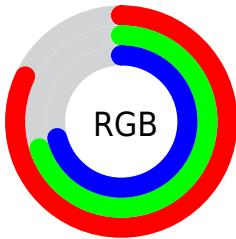
Format	Color
R _Y B	209, 179, 182
Decimal	13743030
CIE _{Lab}	75.56, 11.29, 2.46
CIE _{LCh}	76, 11.558, 12.288
Yxy	49.1729, 0.3366, 0.3254
Android (android.graphics.Color)	4291933110 (0xFFD1B3B6)
YUV	188.3120, -3.1118, 18.1434
Hunter-Lab	70.1234, 6.7626, 5.9003

Details

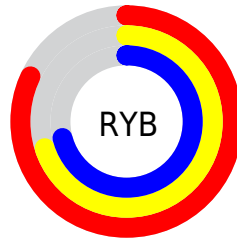
The Yxy color $49.1729, 0.3366, 0.3254$ is a light color, and the websafe version is hex $CC9999$. A complement of this color would be $59.6538, 0.2930, 0.3327$, and the grayscale version is $50.4900, 0.3127, 0.3290$.

A 20% lighter version of the original color is $86.8497, 0.3243, 0.3261$, and $23.3767, 0.3433, 0.3242$ is the 20% darker color. If you saturate the color by 10%, you get $40.6964, 0.3582, 0.3227$, and if you desaturate by 10%, it is $59.0282, 0.3192, 0.3279$.

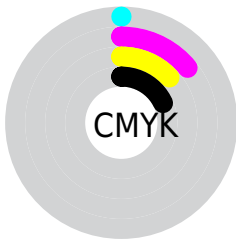
Distribution



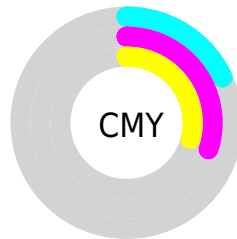
- Red (82%)
- Green (70%)
- Blue (71%)



- Red (82%)
- Yellow (70%)
- Blue (71%)



- Cyan (0%)
- Magenta (14%)
- Yellow (13%)
- Black (18%)




- Cyan (18%)
- Magenta (30%)
- Yellow (29%)

Brightness & Saturation Gradients


These gradients show how the Yxy color 49.1729, 0.3366, 0.3254 changes by changing the brightness by 10 percent. The first figure shows a shift by +10% for each color and the second figure -10%.


Similar to the brightness gradients but the following saturation gradients show a change of the Yxy color 49.1729, 0.3366, 0.3254 by changing the saturation by 10% instead.


 49.1729, 0.3366,
0.3254

 49.1729, 0.3366,
0.3254

383.4226, 0.3247,
0.3273

 34.7567, 0.3395,
0.3249


 88.9482, 0.3323,
0.3261

 23.4755, 0.3433,
0.3243


115.0760, 0.3307,
0.3263

 14.9450, 0.3483,
0.3234


145.8765, 0.3293,
0.3266

 8.7808, 0.3553,
0.3222

181.7341, 0.3281,
0.3267

 4.5985, 0.3657,
0.3203

223.0330, 0.3271,
0.3269

 2.0137, 0.3827,
0.3169

270.1579, 0.3262,

 0.6154, 0.4360,

0.3270

0.3117

323.4929, 0.3254,
0.3272

0.0000, 0.0000,
0.0000

49.1729, 0.3366,
0.3254

49.1729, 0.3366,
0.3254

40.6964, 0.3582,
0.3227

59.0282, 0.3192,
0.3279

33.5308, 0.3850,
0.3200

70.3128, 0.3052,
0.3303

27.6128, 0.4177,
0.3175

83.0832, 0.2939,
0.3325

22.8709, 0.4563,
0.3155

92.2994, 0.2855,
0.3289

19.2265, 0.4998,
0.3146

■ 16.5912, 0.5449,
0.3152

■ 14.8633, 0.5862,
0.3177

■ 13.9192, 0.6174,
0.3220

■ 13.6138, 0.6295,
0.3241

Harmonies

Analogous

The Analogous color harmony consists of three colors that are next to each other on the color wheel.



49.1729, 0.3230, 0.3129



49.1729, 0.3366, 0.3254



49.1729, 0.3437, 0.3391

Triad

The Triadic color harmony groups three colors that are evenly spaced from another and form a triangle on the color wheel.



49.1729, 0.3366, 0.3254



49.1729, 0.3179, 0.3550



49.1729, 0.2840, 0.3069

Complementary

The Complementary color scheme is a pair of colors which are on the opposite of each other on the color wheel.



49.1729, 0.3366, 0.3254



59.6538, 0.2930, 0.3327

Split Complementary

Split-complementary colors differ from the complementary color scheme. The scheme consists of three colors, the original color and two neighbors of the complement color.



49.1729, 0.2827, 0.3177



49.1729, 0.3366, 0.3254



49.1729, 0.3020, 0.3459

Square

The Square scheme is like the rectangle color scheme, but the four colors are evenly spaced on the color wheel.



49.1729, 0.3366, 0.3254



49.1729, 0.3326, 0.3566



49.1729, 0.2893, 0.3320



49.1729, 0.2927, 0.3023

Rectangle

The Rectangle color scheme consists of four colors that form a rectangle on the color wheel.



49.1729, 0.3366, 0.3254



49.1729, 0.3436, 0.3472



49.1729, 0.2893, 0.3320



49.1729, 0.2827, 0.3099

Sweetspot

The Sweet Spot groups the original color and five complimentary colors.



49.1751, 0.3366, 0.3254



93.0871, 0.3187, 0.3280



49.8961, 0.3114, 0.2935



19.6550, 0.3199, 0.3278



0.0000, 0.0000, 0.0000



21.4041, 0.3127, 0.3290

Same Dimension

The Same Dimension uses a secret algorithm to generate beautiful new colors.



49.1751, 0.3366, 0.3254



73.1311, 0.3422, 0.3247



53.8605, 0.3372, 0.3429



11.8273, 0.3275, 0.3267



8.3982, 0.6274, 0.3230



0.4763, 0.5931, 0.3041

Inverse Universe

The Inverse Universe completely reimagines the original color for something new.



49.1751, 0.3366, 0.3254



73.1311, 0.3422, 0.3247



54.3543, 0.2905, 0.3147



11.8273, 0.3275, 0.3267



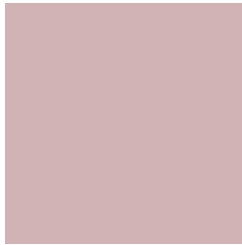
8.3982, 0.6274, 0.3230



0.4763, 0.5931, 0.3041

Previews

White Background



This preview shows how the Yxy color 49.1729, 0.3366, 0.3254 looks on a white background.

Color Contrast Check

Large Text (above 18pt) WCAG AA × Fail

Any Text WCAG AA × Fail

Large Text (above 18pt) WCAG AAA × Fail

Any Text WCAG AAA × Fail

Black Background



This preview shows how the Yxy color 49.1729, 0.3366, 0.3254 looks on a black background.

Color Contrast Check

Large Text (above 18pt) WCAG AA ✓ Pass

Any Text WCAG AA ✓ Pass

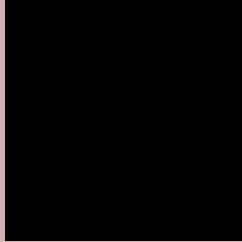
Large Text (above 18pt) WCAG AAA ✓ Pass

Any Text WCAG AAA ✓ Pass

If you want to check with other color combinations, try the [Color Contrast Checker](#).

Yxy 49.1729, 0.3366, 0.3254

Background



This preview shows how black text looks on a background with the Yxy color 49.1729, 0.3366, 0.3254.



This preview shows how white text looks on a background with the Yxy color 49.1729, 0.3366, 0.3254.

Color Blindness Simulation

Color vision deficiency is a very complex topic, and I could not describe the different causes any better than Wikipedia does, so if you want to learn more, you should check out their [article about color blindness](#).

Dichromacy



Original Color

49.1729, 0.3366, 0.3254

Protanopia

49.1902, 0.3161, 0.3277

Deuteranopia

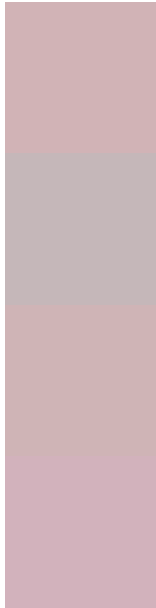
49.1417, 0.3338, 0.3266



Tritanopia

49.3040, 0.3300, 0.3135

Trichromacy



Original Color

49.1729, 0.3366, 0.3254

Protanomaly

49.2401, 0.3231, 0.3265

Deuteranomaly

49.2853, 0.3347, 0.3266

Tritanomaly

49.1733, 0.3325, 0.3170

Monochromacy



Original Color

49.1729, 0.3366, 0.3254

Achromatopsia

50.2886, 0.3127, 0.3290

Achromatomaly

49.9789, 0.3212, 0.3278

CSS Examples

Text

The CSS property to change the color of the text to Yxy 49.1729, 0.3366, 0.3254 is called "color". The color property can be set on classes, ids or directly on the HTML element.

This example shows how text in the color `rgb(209, 179, 182)` looks like.

```
.text, #text, p{  
    color:rgb(209, 179, 182)  
}
```

If you want to add a text shadow in that color use the text-shadow property, you can generate a text shadow directly with our [CSS Text Shadow Generator](#).

Here you see how black text with a 4 pixel rgb(209, 179, 182) colored shadow looks like.

```
.shadow{ text-shadow: 4px 4px 2px rgb(209, 179, 182) }
```

Border

The CSS property to change the border of an element to Yxy 49.1729, 0.3366, 0.3254 is called "border". The border property can be set on classes, ids or directly on the HTML element.

This example shows the color as border, it can be applied via the CSS property "border" or "border-color".

```
.border, #border, table{ border:4px solid rgb(209, 179, 182) }
```

If only the border color should be changed use the property `border-color`.

```
.border{ border-color:rgb(209, 179, 182) }
```

If you want to add a box shadow in that color use:

Here you see how a box with a 4 pixel `rgb(209, 179, 182)` colored shadow looks like.

```
.boxshadow{ -moz-box-shadow:4px 4px 4px  
4px rgb(209, 179, 182); -webkit-box-  
shadow:4px 4px 4px 4px rgb(209, 179, 182);  
box-shadow:4px 4px 4px 4px rgb(209, 179,  
182) }
```


Background

The CSS property to change the background color of an element to Yxy 49.1729, 0.3366, 0.3254 is called "background". The background property can be set on classes, ids or directly on the HTML element.

```
.background, #background, body{  
background: rgb(209, 179, 182) }
```

If only the background color should be changed can be used:

```
.background{ background-color: rgb(209,  
179, 182) }
```

This example shows the color as background, it is applied via the CSS property "background".

To optimize and compress your CSS code, you can use our [online CSS compressor and optimizer](#) based on csstidy. If you want to create a linear or radial gradient as background or border, check our [CSS Gradient Generator](#).

Hey! You found this booklet interesting? Support Converting Colors with the new Membership Option!

The pro membership hides all ads, plus gives you double the colors in the color bucket, and more awesome pro features!

[Learn more, Memberships starting at \\$2.50/m!](#)

**Follow me
on Twitter!**

@ConvertingColor