

Converting Colors

$Yxy(49.2084, 0.3375, 0.3390)$

Have a look what the booklet for
Yxy(49.2084, 0.3375, 0.3390)
contains.

Yxy(49.2084, 0.3375, 0.3390)	3
<i>Conversions</i>	4
<i>Details</i>	6
<i>Harmonies</i>	12
<i>Previews</i>	24
<i>Color Blindness Simulation</i>	27
<i>CSS Examples</i>	30

Color

Yxy(49.2084, 0.3375, 0.3390)

Conversions

Conversions Part 1

Format	Color
Hex	CBB6AE
RGB	203, 182, 174
RGB Percent	80%, 71%, 68%
CMY	0.2040, 0.2862, 0.3177
CMYK	0.00, 0.10, 0.14, 0.20
HSL	17°, 22%, 74%
HSV	17°, 14%, 80%
XYZ	48.9907, 49.2084, 46.9585
YIQ	187.3670, 15.0840, 1.9640

Conversions

Conversions Part 2

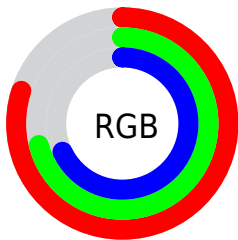
Format	Color
RYB	203, 185, 174
Decimal	13350574
CIELab	75.58, 6.15, 6.79
CIELCh	76, 9.161, 47.849
Yxy	49.2084, 0.3375, 0.3390
Android (android.graphics.Color)	4291540654 (0xFFCBB6AE)
YUV	187.3670, -6.5899, 13.7101
Hunter-Lab	70.1487, 1.9012, 9.4146

Details

The Yxy color **49.2084, 0.3375, 0.3390** is a light color, and the websafe version is hex **CCCCCC**. A complement of this color would be **52.3193, 0.2909, 0.3188**, and the grayscale version is **49.9431, 0.3127, 0.3290**.

A 20% lighter version of the original color is **88.0662, 0.3298, 0.3379**, and **23.4952, 0.3446, 0.3408** is the 20% darker color. If you saturate the color by 10%, you get **42.7757, 0.3589, 0.3465**, and if you desaturate by 10%, it is **56.3956, 0.3195, 0.3319**.

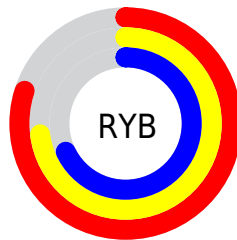
Distribution



Red (80%)

Green (71%)

Blue (68%)



Red (80%)

Yellow (73%)

Blue (68%)

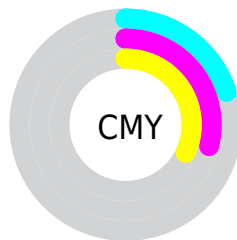


Cyan (0%)

Magenta (10%)

Yellow (14%)

Black (20%)



Cyan (20%)

Magenta (29%)

Yellow (32%)

Brightness & Saturation Gradients


These gradients show how the Yxy color 49.2084, 0.3375, 0.3390 changes by changing the brightness by 10 percent. The first figure shows a shift by +10% for each color and the second figure -10%.


Similar to the brightness gradients but the following saturation gradients show a change of the Yxy color 49.2084, 0.3375, 0.3390 by changing the saturation by 10% instead.

 49.2084, 0.3375,
0.3390

 49.2084, 0.3375,
0.3390


383.5622, 0.3252,
0.3342

 34.7848, 0.3406,
0.3402


 89.0009, 0.3330,
0.3373

 23.4972, 0.3445,
0.3416


115.1386, 0.3313,
0.3366

 14.9610, 0.3497,
0.3435


145.9498, 0.3299,
0.3361

 8.7920, 0.3570,
0.3461

181.8189, 0.3287,
0.3356

 4.6058, 0.3678,
0.3497

223.1303, 0.3276,
0.3352

 2.0179, 0.3855,
0.3552

270.2684, 0.3267,

 0.6178, 0.4748,

0.3348

0.3978

323.6175, 0.3259,
0.3345

0.0000, 0.0000,
0.0000

49.2084, 0.3375,
0.3390

49.2084, 0.3375,
0.3390

42.7757, 0.3589,
0.3465

56.3956, 0.3195,
0.3319

37.0662, 0.3843,
0.3542

64.3543, 0.3044,
0.3253

32.0561, 0.4139,
0.3616

73.1090, 0.2917,
0.3192

27.7176, 0.4476,
0.3680

82.6693, 0.2812,
0.3139

24.0213, 0.4845,
0.3726

91.4328, 0.2821,
0.3289

■ 20.9351, 0.5226,
0.3742

■ 18.4241, 0.5586,
0.3716

■ 16.4492, 0.5886,
0.3646

■ 15.5367, 0.6028,
0.3596

Harmonies

Analogous

The Analogous color harmony consists of three colors that are next to each other on the color wheel.



49.2084, 0.3331, 0.3282



49.2084, 0.3375, 0.3390



49.2084, 0.3351, 0.3474

Triad

The Triadic color harmony groups three colors that are evenly spaced from another and form a triangle on the color wheel.



49.2084, 0.3375, 0.3390



49.2084, 0.3021, 0.3405



49.2084, 0.2987, 0.3077

Complementary

The Complementary color scheme is a pair of colors which are on the opposite of each other on the color wheel.



49.2084, 0.3375, 0.3390



52.3193, 0.2909, 0.3188

Split Complementary

Split-complementary colors differ from the complementary color scheme. The scheme consists of three colors, the original color and two neighbors of the complement color.



49.2084, 0.2907, 0.3104



49.2084, 0.3375, 0.3390



49.2084, 0.2927, 0.3293

Square

The Square scheme is like the rectangle color scheme, but the four colors are evenly spaced on the color wheel.



49.2084, 0.3375, 0.3390



49.2084, 0.3145, 0.3486



49.2084, 0.2886, 0.3182



49.2084, 0.3105, 0.3104

Rectangle

The Rectangle color scheme consists of four colors that form a rectangle on the color wheel.



49.2084, 0.3375, 0.3390



49.2084, 0.3300, 0.3505



49.2084, 0.2886, 0.3182



49.2084, 0.2955, 0.3080

Sweetspot

The Sweet Spot groups the original color and five complimentary colors.



49.2106, 0.3375, 0.3390



94.7431, 0.3191, 0.3317



46.9151, 0.3207, 0.3031



20.0724, 0.3204, 0.3323



0.0000, 0.0000, 0.0000



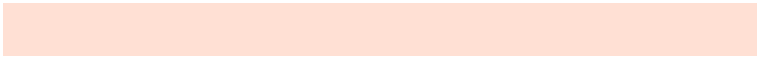
21.4041, 0.3127, 0.3290

Same Dimension

The Same Dimension uses a secret algorithm to generate beautiful new colors.



49.2106, 0.3375, 0.3390



79.1163, 0.3434, 0.3412



55.3243, 0.3350, 0.3561



11.7105, 0.3283, 0.3355



10.0232, 0.6004, 0.3615



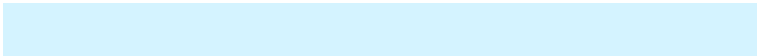
0.6467, 0.5609, 0.3928

Inverse Universe

The Inverse Universe completely reimagines the original color for something new.



52.3193, 0.2909, 0.3188



85.2695, 0.2864, 0.3165



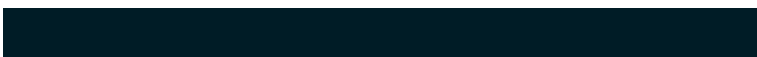
46.2585, 0.2903, 0.3003



12.1817, 0.2983, 0.3224



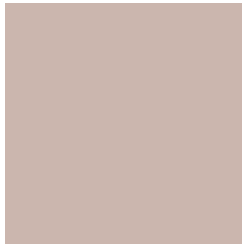
16.1501, 0.1992, 0.2373



0.9563, 0.2048, 0.2573

Previews

White Background



This preview shows how the Yxy color 49.2084, 0.3375, 0.3390 looks on a white background.

Color Contrast Check

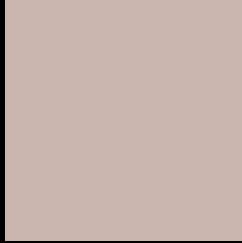
Large Text (above 18pt) WCAG AA × Fail

Any Text WCAG AA × Fail

Large Text (above 18pt) WCAG AAA × Fail

Any Text WCAG AAA × Fail

Black Background



This preview shows how the Yxy color 49.2084, 0.3375, 0.3390 looks on a black background.

Color Contrast Check

Large Text (above 18pt) WCAG AA ✓ Pass

Any Text WCAG AA ✓ Pass

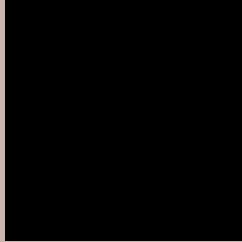
Large Text (above 18pt) WCAG AAA ✓ Pass

Any Text WCAG AAA ✓ Pass

If you want to check with other color combinations, try the [Color Contrast Checker](#).

Yxy 49.2084, 0.3375, 0.3390

Background



This preview shows how black text looks on a background with the Yxy color 49.2084, 0.3375, 0.3390.



This preview shows how white text looks on a background with the Yxy color 49.2084, 0.3375, 0.3390.

Color Blindness Simulation

Color vision deficiency is a very complex topic, and I could not describe the different causes any better than Wikipedia does, so if you want to learn more, you should check out their [article about color blindness](#).

Dichromacy



Original Color

49.2084, 0.3375, 0.3390

Protanopia

49.4589, 0.3257, 0.3417

Deuteranopia

49.2538, 0.3432, 0.3364



Tritanopia

49.2123, 0.3247, 0.3121

Trichromacy



Original Color

49.2084, 0.3375, 0.3390

Protanomaly

49.5288, 0.3301, 0.3416

Deuteranomaly

49.3691, 0.3413, 0.3377

Tritanomaly

49.1668, 0.3295, 0.3217

Monochromacy



Original Color

49.2084, 0.3375, 0.3390

Achromatopsia

49.6933, 0.3127, 0.3290

Achromatomaly

49.4128, 0.3218, 0.3328

CSS Examples

Text

The CSS property to change the color of the text to Yxy 49.2084, 0.3375, 0.3390 is called "color". The color property can be set on classes, ids or directly on the HTML element.

This example shows how text in the color `rgb(203, 182, 174)` looks like.

```
.text, #text, p{  
    color:rgb(203, 182, 174)  
}
```

If you want to add a text shadow in that color use the text-shadow property, you can generate a text shadow directly with our [CSS Text Shadow Generator](#).

Here you see how black text with a 4 pixel rgb(203, 182, 174) colored shadow looks like.

```
.shadow{ text-shadow: 4px 4px 2px rgb(203, 182, 174) }
```

Border

The CSS property to change the border of an element to Yxy 49.2084, 0.3375, 0.3390 is called "border". The border property can be set on classes, ids or directly on the HTML element.

This example shows the color as border, it can be applied via the CSS property "border" or "border-color".

```
.border, #border, table{ border:4px solid rgb(203, 182, 174) }
```

If only the border color should be changed use the property `border-color`.

```
.border{ border-color:rgb(203, 182, 174) }
```

If you want to add a box shadow in that color use:

Here you see how a box with a 4 pixel `rgb(203, 182, 174)` colored shadow looks like.

```
.boxshadow{ -moz-box-shadow:4px 4px 4px  
4px rgb(203, 182, 174); -webkit-box-  
shadow:4px 4px 4px 4px rgb(203, 182, 174);  
box-shadow:4px 4px 4px 4px rgb(203, 182,  
174) }
```


Background

The CSS property to change the background color of an element to Yxy 49.2084, 0.3375, 0.3390 is called "background". The background property can be set on classes, ids or directly on the HTML element.

```
.background, #background, body{  
background: rgb(203, 182, 174) }
```

If only the background color should be changed can be used:

```
.background{ background-color: rgb(203,  
182, 174) }
```

This example shows the color as background, it is applied via the CSS property "background".

To optimize and compress your CSS code, you can use our [online CSS compressor and optimizer](#) based on csstidy. If you want to create a linear or radial gradient as background or border, check our [CSS Gradient Generator](#).

Hey! You found this booklet interesting? Support Converting Colors with the new Membership Option!

The pro membership hides all ads, plus gives you double the colors in the color bucket, and more awesome pro features!

[Learn more, Memberships starting at \\$2.50/m!](#)

**Follow me
on Twitter!**

@ConvertingColor