

Converting Colors

$Yxy(49.3033, 0.3502, 0.3496)$

Have a look what the booklet for
Yxy(49.3033, 0.3502, 0.3496)
contains.

Yxy(49.1743, 0.3499, 0.3488)	3
Conversions	4
Details	6
Harmonies	12
Previews	24
Color Blindness Simulation	27
CSS Examples	30

Color

Yxy(49.1743, 0.3499, 0.3488)

Conversions

Conversions Part 1

Format	Color
Hex	D0B5A5
RGB	208, 181, 165
RGB Percent	82%, 71%, 65%
CMY	0.1843, 0.2902, 0.3530
CMYK	0.00, 0.13, 0.21, 0.18
HSL	22°, 31%, 73%
HSV	22°, 21%, 82%
XYZ	49.3294, 49.1743, 42.4777
YIQ	187.2490, 21.2280, 0.7480

Conversions

Conversions Part 2

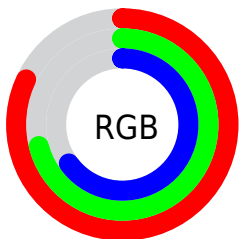
Format	Color
R _Y B	208, 190, 165
Decimal	13677989
CIE Lab	75.56, 7.16, 11.72
CIE LCh	76, 13.737, 58.582
Yxy	49.1743, 0.3499, 0.3488
Android (android.graphics.Color)	4291868069 (0xFFD0B5A5)
YUV	187.2490, -10.9688, 18.1986
Hunter-Lab	70.1244, 2.8491, 13.1723

Details

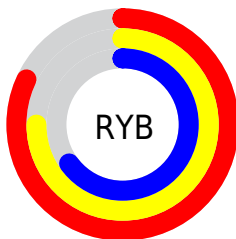
The Yxy color **49.1743, 0.3499, 0.3488** is a light color, and the websafe version is hex **CC9999**. A complement of this color would be **50.2476, 0.2807, 0.3083**, and the grayscale version is **49.8973, 0.3127, 0.3290**.

A 20% lighter version of the original color is **86.9957, 0.3358, 0.3459**, and **23.4029, 0.3605, 0.3539** is the 20% darker color. If you saturate the color by 10%, you get **43.4162, 0.3726, 0.3590**, and if you desaturate by 10%, it is **55.5577, 0.3304, 0.3389**.

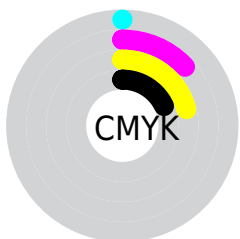
Distribution



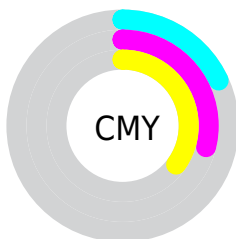
- Red (82%)
- Green (71%)
- Blue (65%)



- Red (82%)
- Yellow (75%)
- Blue (65%)



- Cyan (0%)
- Magenta (13%)
- Yellow (21%)
- Black (18%)





- Cyan (18%)
- Magenta (29%)
- Yellow (35%)

Brightness & Saturation Gradients


These gradients show how the Yxy color 49.1743, 0.3499, 0.3488 changes by changing the brightness by 10 percent. The first figure shows a shift by +10% for each color and the second figure -10%.


Similar to the brightness gradients but the following saturation gradients show a change of the Yxy color 49.1743, 0.3499, 0.3488 by changing the saturation by 10% instead.


 49.1743, 0.3499,
0.3488

 49.1743, 0.3499,
0.3488

383.4281, 0.3314,
0.3392

 34.7578, 0.3545,
0.3511


 88.9503, 0.3432,
0.3454

 23.4763, 0.3604,
0.3540


 115.0785, 0.3407,
0.3441

 14.9456, 0.3682,
0.3577


145.8794, 0.3385,
0.3430

 8.7812, 0.3791,
0.3626

181.7374, 0.3367,
0.3420

 4.5988, 0.3951,
0.3695

223.0369, 0.3351,
0.3412

 2.0138, 0.4208,
0.3796

270.1622, 0.3337,

 0.6155, 0.5525,

0.3405

0.4475

323.4978, 0.3325,
0.3398

0.0000, 0.0000,
0.0000

49.1743, 0.3499,
0.3488

49.1743, 0.3499,
0.3488

43.4162, 0.3726,
0.3590

55.5577, 0.3304,
0.3389

38.2572, 0.3987,
0.3691

62.5783, 0.3138,
0.3296

33.6789, 0.4281,
0.3785

70.2562, 0.2996,
0.3210

29.6592, 0.4603,
0.3861

78.6084, 0.2875,
0.3130

26.1747, 0.4939,
0.3909

86.7176, 0.2844,
0.3199

■ 23.1998, 0.5267,
0.3914

■ 92.1522, 0.2849,
0.3289

■ 20.7063, 0.5560,
0.3868

■ 18.7830, 0.5787,
0.3787

Harmonies

Analogous

The Analogous color harmony consists of three colors that are next to each other on the color wheel.



49.1743, 0.3469, 0.3335



49.1743, 0.3499, 0.3488



49.1743, 0.3426, 0.3595

Triad

The Triadic color harmony groups three colors that are evenly spaced from another and form a triangle on the color wheel.



49.1743, 0.3499, 0.3488



49.1743, 0.2910, 0.3405



49.1743, 0.2975, 0.2979

Complementary

The Complementary color scheme is a pair of colors which are on the opposite of each other on the color wheel.



49.1743, 0.3499, 0.3488



50.2476, 0.2807, 0.3083

Split Complementary

Split-complementary colors differ from the complementary color scheme. The scheme consists of three colors, the original color and two neighbors of the complement color.



49.1743, 0.2833, 0.2988



49.1743, 0.3499, 0.3488



49.1743, 0.2797, 0.3229

Square

The Square scheme is like the rectangle color scheme, but the four colors are evenly spaced on the color wheel.



49.1743, 0.3499, 0.3488



49.1743, 0.3084, 0.3552



49.1743, 0.2769, 0.3077



49.1743, 0.3162, 0.3047

Rectangle

The Rectangle color scheme consists of four colors that form a rectangle on the color wheel.



49.1743, 0.3499, 0.3488



49.1743, 0.3330, 0.3623



49.1743, 0.2769, 0.3077



49.1743, 0.2921, 0.2973

Sweetspot

The Sweet Spot groups the original color and five complimentary colors.



49.1765, 0.3499, 0.3488



93.0784, 0.3224, 0.3346



44.1307, 0.3287, 0.2960



19.7663, 0.3235, 0.3352



0.0000, 0.0000, 0.0000



21.4041, 0.3127, 0.3290

Same Dimension

The Same Dimension uses a secret algorithm to generate beautiful new colors.



49.1765, 0.3499, 0.3488



73.6261, 0.3599, 0.3535



58.4995, 0.3449, 0.3737



12.5190, 0.3281, 0.3377



11.8754, 0.5762, 0.3807



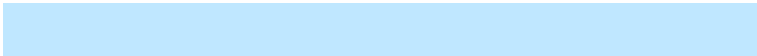
0.8144, 0.5415, 0.4083

Inverse Universe

The Inverse Universe completely reimagines the original color for something new.



50.2476, 0.2807, 0.3083



75.6288, 0.2736, 0.3031



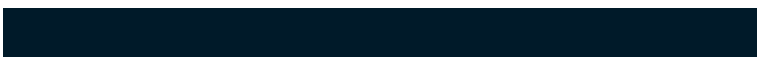
41.5705, 0.2788, 0.2799



12.6364, 0.2983, 0.3201



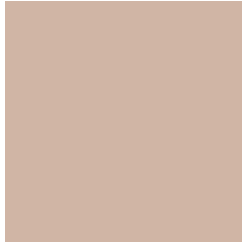
13.0720, 0.1898, 0.2031



0.8803, 0.1969, 0.2288

Previews

White Background



This preview shows how the Yxy color 49.1743, 0.3499, 0.3488 looks on a white background.

Color Contrast Check

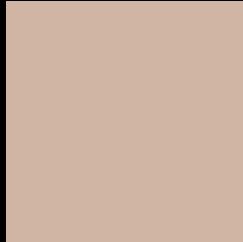
Large Text (above 18pt) WCAG AA × Fail

Any Text WCAG AA × Fail

Large Text (above 18pt) WCAG AAA × Fail

Any Text WCAG AAA × Fail

Black Background



This preview shows how the Yxy color 49.1743, 0.3499, 0.3488 looks on a black background.

Color Contrast Check

Large Text (above 18pt) WCAG AA ✓ Pass

Any Text WCAG AA ✓ Pass

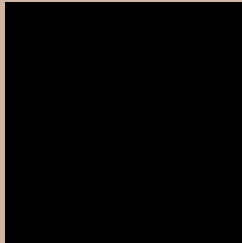
Large Text (above 18pt) WCAG AAA ✓ Pass

Any Text WCAG AAA ✓ Pass

If you want to check with other color combinations, try the [Color Contrast Checker](#).

Yxy 49.1743, 0.3499, 0.3488

Background



This preview shows how black text looks on a background with the Yxy color 49.1743, 0.3499, 0.3488.



This preview shows how white text looks on a background with the Yxy color 49.1743, 0.3499, 0.3488.

Color Blindness Simulation

Color vision deficiency is a very complex topic, and I could not describe the different causes any better than Wikipedia does, so if you want to learn more, you should check out their [article about color blindness](#).

Dichromacy



Original Color

49.1743, 0.3499, 0.3488

Protanopia

49.3772, 0.3347, 0.3532

Deuteranopia

49.3562, 0.3537, 0.3473



Tritanopia

49.0548, 0.3310, 0.3123

Trichromacy



Original Color

49.1743, 0.3499, 0.3488

Protanomaly

49.1763, 0.3403, 0.3517

Deuteranomaly

49.2080, 0.3528, 0.3474

Tritanomaly

48.9198, 0.3376, 0.3242

Monochromacy



Original Color

49.1743, 0.3499, 0.3488

Achromatopsia

49.6933, 0.3127, 0.3290

Achromatomaly

49.5547, 0.3260, 0.3366

CSS Examples

Text

The CSS property to change the color of the text to Yxy 49.1743, 0.3499, 0.3488 is called "color". The color property can be set on classes, ids or directly on the HTML element.

This example shows how text in the color `rgb(208, 181, 165)` looks like.

```
.text, #text, p{  
    color:rgb(208, 181, 165)  
}
```

If you want to add a text shadow in that color use the text-shadow property, you can generate a text shadow directly with our [CSS Text Shadow Generator](#).

Here you see how black text with a 4 pixel rgb(208, 181, 165) colored shadow looks like.

```
.shadow{ text-shadow: 4px 4px 2px rgb(208, 181, 165) }
```

Border

The CSS property to change the border of an element to Yxy 49.1743, 0.3499, 0.3488 is called "border". The border property can be set on classes, ids or directly on the HTML element.

This example shows the color as border, it can be applied via the CSS property "border" or "border-color".

```
.border, #border, table{ border:4px solid rgb(208, 181, 165) }
```

If only the border color should be changed use the property `border-color`.

```
.border{ border-color:rgb(208, 181, 165) }
```

If you want to add a box shadow in that color use:

Here you see how a box with a 4 pixel `rgb(208, 181, 165)` colored shadow looks like.

```
.boxshadow{ -moz-box-shadow:4px 4px 4px  
4px rgb(208, 181, 165); -webkit-box-  
shadow:4px 4px 4px 4px rgb(208, 181, 165);  
box-shadow:4px 4px 4px 4px rgb(208, 181,  
165) }
```


Background

The CSS property to change the background color of an element to Yxy 49.1743, 0.3499, 0.3488 is called "background". The background property can be set on classes, ids or directly on the HTML element.

```
.background, #background, body{  
background: rgb(208, 181, 165) }
```

If only the background color should be changed can be used:

```
.background{ background-color: rgb(208,  
181, 165) }
```

This example shows the color as background, it is applied via the CSS property "background".

To optimize and compress your CSS code, you can use our [online CSS compressor and optimizer](#) based on csstidy. If you want to create a linear or radial gradient as background or border, check our [CSS Gradient Generator](#).

Hey! You found this booklet interesting? Support Converting Colors with the new Membership Option!

The pro membership hides all ads, plus gives you double the colors in the color bucket, and more awesome pro features!

[Learn more, Memberships starting at \\$2.50/m!](#)

**Follow me
on Twitter!**

@ConvertingColor