

Converting Colors

$Y_{xy}(49.3222, 0.3406, 0.3280)$

Have a look what the booklet for
Yxy(49.3222, 0.3406, 0.3280)
contains.

Yxy(49.3844, 0.3401, 0.3279)	3
Conversions	4
Details	6
Harmonies	12
Previews	24
Color Blindness Simulation	27
CSS Examples	30

Color

Yxy(49.3844, 0.3401, 0.3279)

Conversions

Conversions Part 1

Format	Color
Hex	D3B3B4
RGB	211, 179, 180
RGB Percent	83%, 70%, 71%
CMY	0.1725, 0.2980, 0.2942
CMYK	0.00, 0.15, 0.15, 0.17
HSL	358°, 27%, 76%
HSV	358°, 15%, 83%
XYZ	51.2218, 49.3844, 50.0019
YIQ	188.6820, 18.7510, 7.0950

Conversions

Conversions Part 2

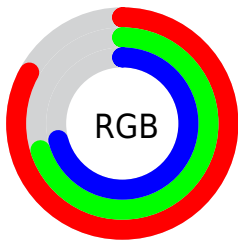
Format	Color
RYB	211, 179, 180
Decimal	13874100
CIELab	75.69, 11.67, 3.78
CIElCh	76, 12.272, 17.959
Yxy	49.3844, 0.3401, 0.3279
Android (android.graphics.Color)	4292064180 (0xFFD3B3B4)
YUV	188.6820, -4.2802, 19.5729
Hunter-Lab	70.2740, 7.1267, 7.0054

Details

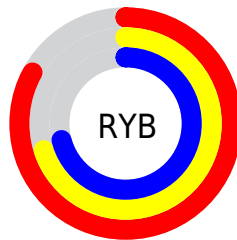
The Yxy color $49.3844, 0.3401, 0.3279$ is a light color, and the websafe version is hex $CC9999$. A complement of this color would be $60.8305, 0.2905, 0.3301$, and the grayscale version is $50.7156, 0.3127, 0.3290$.

A 20% lighter version of the original color is $86.7328, 0.3256, 0.3281$, and $23.5219, 0.3481, 0.3275$ is the 20% darker color. If you saturate the color by 10%, you get $40.7924, 0.3639, 0.3271$, and if you desaturate by 10%, it is $59.3980, 0.3210, 0.3286$.

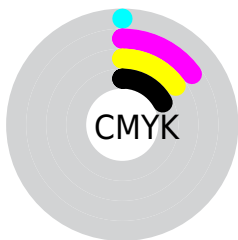
Distribution



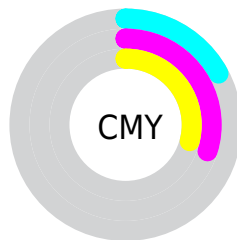
- Red (83%)
- Green (70%)
- Blue (71%)



- Red (83%)
- Yellow (70%)
- Blue (71%)



- Cyan (0%)
- Magenta (15%)
- Yellow (15%)
- Black (17%)





- Cyan (17%)
- Magenta (30%)
- Yellow (29%)

Brightness & Saturation Gradients


These gradients show how the Yxy color 49.3844, 0.3401, 0.3279 changes by changing the brightness by 10 percent. The first figure shows a shift by +10% for each color and the second figure -10%.


Similar to the brightness gradients but the following saturation gradients show a change of the Yxy color 49.3844, 0.3401, 0.3279 by changing the saturation by 10% instead.


 49.3844, 0.3401,
0.3279

 49.3844, 0.3401,
0.3279


384.2537, 0.3265,
0.3286

 34.9245, 0.3435,
0.3277


 89.2621, 0.3352,
0.3282

 23.6047, 0.3478,
0.3274


115.4487, 0.3333,
0.3283

 15.0407, 0.3536,
0.3270


146.3130, 0.3317,
0.3283

 8.8479, 0.3616,
0.3264

182.2394, 0.3304,
0.3284

 4.6421, 0.3735,
0.3253

223.6122, 0.3292,
0.3285

 2.0389, 0.3929,
0.3233

270.8160, 0.3282,

 0.6299, 0.4569,

0.3285

0.3254

324.2350, 0.3273,
0.3285

0.0000, 0.0000,
0.0000

49.3844, 0.3401,
0.3279

49.3844, 0.3401,
0.3279

40.7924, 0.3639,
0.3271

59.3980, 0.3210,
0.3286

33.5515, 0.3935,
0.3264

70.8867, 0.3058,
0.3293

27.5949, 0.4295,
0.3257

83.9089, 0.2935,
0.3300

22.8476, 0.4717,
0.3253

92.5898, 0.2866,
0.3289

19.2269, 0.5184,
0.3252

■ 16.6396, 0.5648,
0.3257

■ 14.9778, 0.6042,
0.3268

■ 14.1096, 0.6299,
0.3283

■ 13.8639, 0.6373,
0.3285

Harmonies

Analogous

The Analogous color harmony consists of three colors that are next to each other on the color wheel.



49.3844, 0.3267, 0.3142



49.3844, 0.3401, 0.3279



49.3844, 0.3460, 0.3422

Triad

The Triadic color harmony groups three colors that are evenly spaced from another and form a triangle on the color wheel.



49.3844, 0.3401, 0.3279



49.3844, 0.3149, 0.3554



49.3844, 0.2835, 0.3041

Complementary

The Complementary color scheme is a pair of colors which are on the opposite of each other on the color wheel.



49.3844, 0.3401, 0.3279



60.8305, 0.2905, 0.3301

Split Complementary

Split-complementary colors differ from the complementary color scheme. The scheme consists of three colors, the original color and two neighbors of the complement color.



49.3844, 0.2806, 0.3144



49.3844, 0.3401, 0.3279



49.3844, 0.2985, 0.3444

Square

The Square scheme is like the rectangle color scheme, but the four colors are evenly spaced on the color wheel.



49.3844, 0.3401, 0.3279



49.3844, 0.3312, 0.3586



49.3844, 0.2860, 0.3292



49.3844, 0.2940, 0.3006

Rectangle

The Rectangle color scheme consists of four colors that form a rectangle on the color wheel.



49.3844, 0.3401, 0.3279



49.3844, 0.3448, 0.3503



49.3844, 0.2860, 0.3292



49.3844, 0.2816, 0.3069

Sweetspot

The Sweet Spot groups the original color and five complimentary colors.



49.3866, 0.3401, 0.3279



91.3625, 0.3208, 0.3286



50.6385, 0.3136, 0.2917



19.3055, 0.3220, 0.3286



0.0000, 0.0000, 0.0000



21.4041, 0.3127, 0.3290

Same Dimension

The Same Dimension uses a secret algorithm to generate beautiful new colors.



49.3866, 0.3401, 0.3279



71.5881, 0.3468, 0.3277



55.6611, 0.3383, 0.3469



11.8140, 0.3286, 0.3283



8.3690, 0.6365, 0.3280



0.4700, 0.6248, 0.3216

Inverse Universe

The Inverse Universe completely reimagines the original color for something new.



49.3866, 0.3401, 0.3279



71.5881, 0.3468, 0.3277



53.8003, 0.2892, 0.3105



11.8140, 0.3286, 0.3283



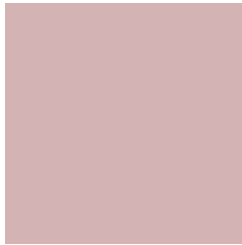
8.3690, 0.6365, 0.3280



0.4700, 0.6248, 0.3216

Previews

White Background



This preview shows how the Yxy color 49.3844, 0.3401, 0.3279 looks on a white background.

Color Contrast Check

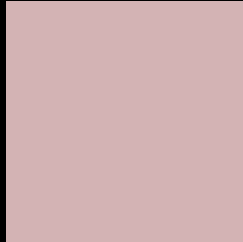
Large Text (above 18pt) WCAG AA × Fail

Any Text WCAG AA × Fail

Large Text (above 18pt) WCAG AAA × Fail

Any Text WCAG AAA × Fail

Black Background



This preview shows how the Yxy color 49.3844, 0.3401, 0.3279 looks on a black background.

Color Contrast Check

Large Text (above 18pt) WCAG AA ✓ Pass

Any Text WCAG AA ✓ Pass

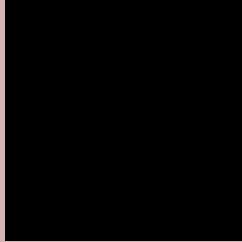
Large Text (above 18pt) WCAG AAA ✓ Pass

Any Text WCAG AAA ✓ Pass

If you want to check with other color combinations, try the [Color Contrast Checker](#).

Yxy 49.3844, 0.3401, 0.3279

Background



This preview shows how black text looks on a background with the Yxy color 49.3844, 0.3401, 0.3279.



This preview shows how white text looks on a background with the Yxy color 49.3844, 0.3401, 0.3279.

Color Blindness Simulation

Color vision deficiency is a very complex topic, and I could not describe the different causes any better than Wikipedia does, so if you want to learn more, you should check out their [article about color blindness](#).

Dichromacy



Original Color

49.3844, 0.3401, 0.3279

Protanopia

49.6549, 0.3185, 0.3315

Deuteranopia

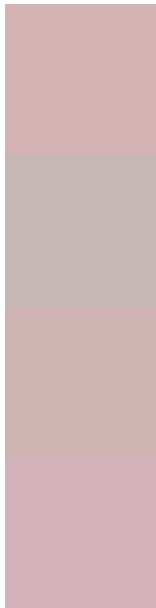
49.2032, 0.3364, 0.3291



Tritanopia

49.2029, 0.3319, 0.3124

Trichromacy



Original Color

49.3844, 0.3401, 0.3279

Protanomaly

49.2916, 0.3256, 0.3290

Deuteranomaly

49.3477, 0.3372, 0.3291

Tritanomaly

49.4257, 0.3351, 0.3183

Monochromacy



Original Color

49.3844, 0.3401, 0.3279

Achromatopsia

50.8881, 0.3127, 0.3290

Achromatomaly

50.1134, 0.3221, 0.3278

CSS Examples

Text

The CSS property to change the color of the text to Yxy 49.3844, 0.3401, 0.3279 is called "color". The color property can be set on classes, ids or directly on the HTML element.

This example shows how text in the color `rgb(211, 179, 180)` looks like.

```
.text, #text, p{  
    color:rgb(211, 179, 180)  
}
```

If you want to add a text shadow in that color use the text-shadow property, you can generate a text shadow directly with our [CSS Text Shadow Generator](#).

Here you see how black text with a 4 pixel rgb(211, 179, 180) colored shadow looks like.

```
.shadow{ text-shadow: 4px 4px 2px rgb(211, 179, 180) }
```

Border

The CSS property to change the border of an element to Yxy 49.3844, 0.3401, 0.3279 is called "border". The border property can be set on classes, ids or directly on the HTML element.

This example shows the color as border, it can be applied via the CSS property "border" or "border-color".

```
.border, #border, table{ border:4px solid rgb(211, 179, 180) }
```

If only the border color should be changed use the property `border-color`.

```
.border{ border-color:rgb(211, 179, 180) }
```

If you want to add a box shadow in that color use:

Here you see how a box with a 4 pixel `rgb(211, 179, 180)` colored shadow looks like.

```
.boxshadow{ -moz-box-shadow:4px 4px 4px  
4px rgb(211, 179, 180); -webkit-box-  
shadow:4px 4px 4px 4px rgb(211, 179, 180);  
box-shadow:4px 4px 4px 4px rgb(211, 179,  
180) }
```


Background

The CSS property to change the background color of an element to Yxy 49.3844, 0.3401, 0.3279 is called "background". The background property can be set on classes, ids or directly on the HTML element.

```
.background, #background, body{  
background: rgb(211, 179, 180) }
```

If only the background color should be changed can be used:

```
.background{ background-color: rgb(211,  
179, 180) }
```

This example shows the color as background, it is applied via the CSS property "background".

To optimize and compress your CSS code, you can use our [online CSS compressor and optimizer](#) based on csstidy. If you want to create a linear or radial gradient as background or border, check our [CSS Gradient Generator](#).

Hey! You found this booklet interesting? Support Converting Colors with the new Membership Option!

The pro membership hides all ads, plus gives you double the colors in the color bucket, and more awesome pro features!

[Learn more, Memberships starting at \\$2.50/m!](#)

**Follow me
on Twitter!**

@ConvertingColor