

# Converting Colors

$Yxy(49.3997, 0.3345, 0.3243)$

Have a look what the booklet for  
Yxy(49.3997, 0.3345, 0.3243)  
contains.

<b>Yxy(49.5131, 0.3339, 0.3242)</b> .....	3
<b>Conversions</b> .....	4
<b>Details</b> .....	6
<b>Harmonies</b> .....	12
<b>Previews</b> .....	24
<b>Color Blindness Simulation</b> .....	27
<b>CSS Examples</b> .....	30

# Color

**Yxy(49.5131, 0.3339, 0.3242)**

# Conversions

## Conversions Part 1

Format	Color
Hex	D0B4B8
RGB	208, 180, 184
RGB Percent	82%, 71%, 72%
CMY	0.1841, 0.2942, 0.2784
CMYK	0.00, 0.13, 0.12, 0.18
HSL	351°, 23%, 76%
HSV	351°, 13%, 82%
XYZ	50.9945, 49.5131, 52.2163
YIQ	188.8280, 15.4040, 7.1800

# Conversions

## Conversions Part 2

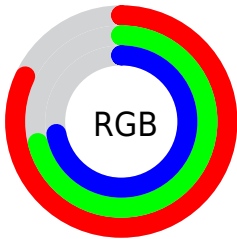
Format	Color
R <sub>Y</sub> B	208, 180, 184
Decimal	13677752
CIE Lab	75.77, 10.73, 1.68
CIE LCh	76, 10.858, 8.879
Yxy	49.5131, 0.3339, 0.3242
Android (android.graphics.Color)	4291867832 (0xFFD0B4B8)
YUV	188.8280, -2.3802, 16.8138
Hunter-Lab	70.3655, 6.2208, 5.2584

# Details

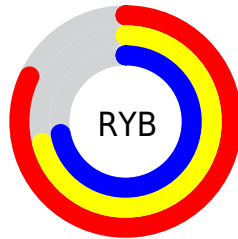
The Yxy color  $49.5131, 0.3339, 0.3242$  is a light color, and the websafe version is hex `CCCCCC`. A complement of this color would be  $59.1968, 0.2949, 0.3339$ , and the grayscale version is  $50.7963, 0.3127, 0.3290$ .

A 20% lighter version of the original color is  $87.5422, 0.3230, 0.3251$ , and  $23.5897, 0.3394, 0.3226$  is the 20% darker color. If you saturate the color by 10%, you get  $41.0357, 0.3541, 0.3204$ , and if you desaturate by 10%, it is  $59.3498, 0.3176, 0.3278$ .

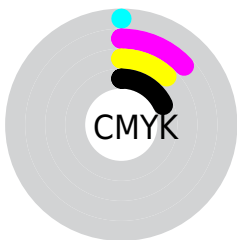
# Distribution



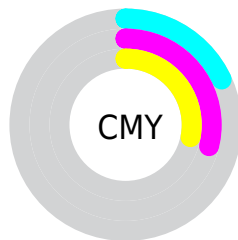
- Red (82%)
- Green (71%)
- Blue (72%)



- Red (82%)
- Yellow (71%)
- Blue (72%)



- Cyan (0%)
- Magenta (13%)
- Yellow (12%)
- Black (18%)




- Cyan (18%)
- Magenta (29%)
- Yellow (28%)


# Brightness & Saturation Gradients

These gradients show how the Yxy color 49.5131, 0.3339, 0.3242 changes by changing the brightness by 10 percent. The first figure shows a shift by +10% for each color and the second figure -10%.

Similar to the brightness gradients but the following saturation gradients show a change of the Yxy color 49.5131, 0.3339, 0.3242 by changing the saturation by 10% instead.





 49.5131, 0.3339,  
0.3242

 49.5131, 0.3339,  
0.3242

384.7588, 0.3234,  
0.3266

 35.0267, 0.3365,  
0.3236


 89.4530, 0.3301,  
0.3251

 23.6834, 0.3398,  
0.3228

115.6754, 0.3287,  
0.3254

 15.0990, 0.3443,  
0.3217


146.5784, 0.3274,  
0.3257

 8.8889, 0.3504,  
0.3202

182.5466, 0.3264,  
0.3259

 4.6688, 0.3595,  
0.3179

223.9644, 0.3255,  
0.3262

 2.0543, 0.3743,  
0.3141

271.2161, 0.3247,

 0.6387, 0.4167,

0.3263

324.6861, 0.3240,  
0.3265

0.3062

0.0000, 0.0000,  
0.0000

49.5131, 0.3339,  
0.3242

49.5131, 0.3339,  
0.3242

41.0357, 0.3541,  
0.3204

59.3498, 0.3176,  
0.3278

33.8516, 0.3791,  
0.3165

70.5951, 0.3045,  
0.3311

27.8990, 0.4095,  
0.3129

83.3038, 0.2939,  
0.3342

23.1087, 0.4457,  
0.3098

92.1564, 0.2849,  
0.3289

19.4042, 0.4868,  
0.3081

■ 16.7003, 0.5305,  
0.3083

■ 14.8988, 0.5721,  
0.3111

■ 13.8812, 0.6059,  
0.3164

■ 13.5088, 0.6222,  
0.3201

# Harmonies

## Analogous

The Analogous color harmony consists of three colors that are next to each other on the color wheel.



49.5131, 0.3207, 0.3128



49.5131, 0.3339, 0.3242



49.5131, 0.3413, 0.3371

# Triad

The Triadic color harmony groups three colors that are evenly spaced from another and form a triangle on the color wheel.



49.5131, 0.3339, 0.3242



49.5131, 0.3193, 0.3539



49.5131, 0.2853, 0.3092

# Complementary

The Complementary color scheme is a pair of colors which are on the opposite of each other on the color wheel.



49.5131, 0.3339, 0.3242



59.1968, 0.2949, 0.3339

# Split Complementary

Split-complementary colors differ from the complementary color scheme. The scheme consists of three colors, the original color and two neighbors of the complement color.



49.5131, 0.2849, 0.3198



49.5131, 0.3339, 0.3242



49.5131, 0.3043, 0.3461

# Square

The Square scheme is like the rectangle color scheme, but the four colors are evenly spaced on the color wheel.



49.5131, 0.3339, 0.3242



49.5131, 0.3327, 0.3546



49.5131, 0.2918, 0.3334



49.5131, 0.2927, 0.3041



# Rectangle

The Rectangle color scheme consists of four colors that form a rectangle on the color wheel.



49.5131, 0.3339, 0.3242



49.5131, 0.3420, 0.3449



49.5131, 0.2918, 0.3334



49.5131, 0.2843, 0.3122

# Sweetspot

The Sweet Spot groups the original color and five complimentary colors.



49.5153, 0.3339, 0.3242



93.1136, 0.3184, 0.3276



50.0087, 0.3108, 0.2956



19.6617, 0.3196, 0.3273



0.0000, 0.0000, 0.0000



21.4041, 0.3127, 0.3290



# Same Dimension

The Same Dimension uses a secret algorithm to generate beautiful new colors.



49.5153, 0.3339, 0.3242



74.6235, 0.3389, 0.3232



53.4553, 0.3357, 0.3409



11.8354, 0.3268, 0.3257



8.4240, 0.6196, 0.3187



0.4801, 0.5760, 0.2947



# Inverse Universe

The Inverse Universe completely reimagines the original color for something new.



49.5153, 0.3339, 0.3242



74.6235, 0.3389, 0.3232



54.7496, 0.2920, 0.3168



11.8354, 0.3268, 0.3257



8.4240, 0.6196, 0.3187

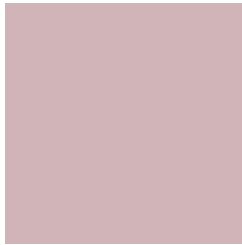


0.4801, 0.5760, 0.2947



# Previews

## White Background



This preview shows how the Yxy color 49.5131, 0.3339, 0.3242 looks on a white background.

## Color Contrast Check

Large Text (above 18pt) WCAG AA × Fail

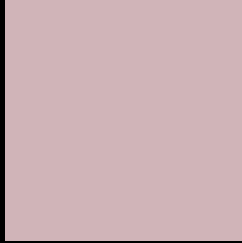
Any Text WCAG AA × Fail

Large Text (above 18pt) WCAG AAA × Fail

Any Text WCAG AAA × Fail



# Black Background



This preview shows how the Yxy color 49.5131, 0.3339, 0.3242 looks on a black background.

## Color Contrast Check

Large Text (above 18pt) WCAG AA ✓ Pass

Any Text WCAG AA ✓ Pass

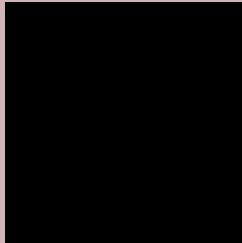
Large Text (above 18pt) WCAG AAA ✓ Pass

Any Text WCAG AAA ✓ Pass

If you want to check with other color combinations, try the [Color Contrast Checker](#).

**Yxy 49.5131, 0.3339, 0.3242**

## Background



This preview shows how black text looks on a background with the Yxy color 49.5131, 0.3339, 0.3242.



This preview shows how white text looks on a background with the Yxy color 49.5131, 0.3339, 0.3242.

# Color Blindness Simulation

Color vision deficiency is a very complex topic, and I could not describe the different causes any better than Wikipedia does, so if you want to learn more, you should check out their [article about color blindness](#).

## Dichromacy



### Original Color

49.5131, 0.3339, 0.3242

### Protanopia

49.6528, 0.3153, 0.3277

### Deuteranopia

49.6303, 0.3320, 0.3254



## Tritanopia

49.6458, 0.3273, 0.3123

# Trichromacy



## Original Color

49.5131, 0.3339, 0.3242

## Protanomaly

49.6965, 0.3222, 0.3265

## Deuteranomaly

49.7738, 0.3328, 0.3254

## Tritanomaly

49.5132, 0.3298, 0.3158

# Monochromacy



## Original Color

49.5131, 0.3339, 0.3242

## Achromatopsia

50.8881, 0.3127, 0.3290

## Achromatomaly

50.4414, 0.3203, 0.3278

# CSS Examples

## Text

The CSS property to change the color of the text to Yxy 49.5131, 0.3339, 0.3242 is called "color". The color property can be set on classes, ids or directly on the HTML element.

This example shows how text in the color `rgb(208, 180, 184)` looks like.

```
.text, #text, p{  
    color:rgb(208, 180, 184)  
}
```

If you want to add a text shadow in that color use the text-shadow property, you can generate a text shadow directly with our [CSS Text Shadow Generator](#).

Here you see how black text with a 4 pixel rgb(208, 180, 184) colored shadow looks like.

```
.shadow{ text-shadow: 4px 4px 2px rgb(208, 180, 184) }
```

## Border

The CSS property to change the border of an element to Yxy 49.5131, 0.3339, 0.3242 is called "border". The border property can be set on classes, ids or directly on the HTML element.

This example shows the color as border, it can be applied via the CSS property "border" or "border-color".

```
.border, #border, table{ border:4px solid rgb(208, 180, 184) }
```

If only the border color should be changed use the property border-color.

```
.border{ border-color:rgb(208, 180, 184) }
```

If you want to add a box shadow in that color use:

Here you see how a box with a 4 pixel rgb(208, 180, 184) colored shadow looks like.

```
.boxshadow{ -moz-box-shadow:4px 4px 4px  
4px rgb(208, 180, 184); -webkit-box-  
shadow:4px 4px 4px 4px rgb(208, 180, 184);  
box-shadow:4px 4px 4px 4px rgb(208, 180,  
184) }
```



# Background

The CSS property to change the background color of an element to Yxy 49.5131, 0.3339, 0.3242 is called "background". The background property can be set on classes, ids or directly on the HTML element.

```
.background, #background, body{  
background: rgb(208, 180, 184) }
```

If only the background color should be changed can be used:

```
.background{ background-color: rgb(208,  
180, 184) }
```

This example shows the color as background, it is applied via the CSS property "background".

To optimize and compress your CSS code, you can use our [online CSS compressor and optimizer](#) based on csstidy. If you want to create a linear or radial gradient as background or border, check our [CSS Gradient Generator](#).

Hey! You found this booklet interesting? Support Converting Colors with the new Membership Option!

The pro membership hides all ads, plus gives you double the colors in the color bucket, and more awesome pro features!

**[Learn more, Memberships starting at \\$2.50/m!](#)**

**Follow me  
on Twitter!**

@ConvertingColor