

Converting Colors

Yxy(49.4103, 0.3662, 0.3623)

Have a look what the booklet for
Yxy(49.4103, 0.3662, 0.3623)
contains.

Yxy(49.2386, 0.3660, 0.3619)	3
Conversions	4
Details	6
Harmonies	12
Previews	24
Color Blindness Simulation	27
CSS Examples	30

Color

Yxy(49.2386, 0.3660, 0.3619)

Conversions

Conversions Part 1

Format	Color
Hex	D6B499
RGB	214, 180, 153
RGB Percent	84%, 71%, 60%
CMY	0.1609, 0.2941, 0.4000
CMYK	0.00, 0.16, 0.28, 0.16
HSL	27°, 43%, 72%
HSV	27°, 28%, 84%
XYZ	49.7964, 49.2386, 37.0208
YIQ	187.0880, 28.9310, -1.1890

Conversions

Conversions Part 2

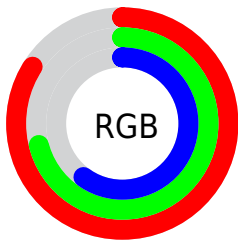
Format	Color
R _Y B	214, 201, 153
Decimal	14070937
CIE Lab	75.60, 8.25, 18.34
CIE LCh	76, 20.110, 65.770
Yxy	49.2386, 0.3660, 0.3619
Android (android.graphics.Color)	4292261017 (0xFFD6B499)
YUV	187.0880, -16.8054, 23.6018
Hunter-Lab	70.1702, 3.8750, 17.8386

Details

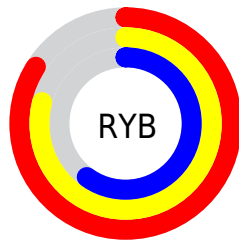
The Yxy color $49.2386, 0.3660, 0.3619$ is a light color, and the websafe version is hex `CC9999`. A complement of this color would be $47.1522, 0.2679, 0.2936$, and the grayscale version is $49.8308, 0.3127, 0.3290$.

A 20% lighter version of the original color is $85.7559, 0.3445, 0.3581$, and $23.4072, 0.3805, 0.3697$ is the 20% darker color. If you saturate the color by 10%, you get $43.9886, 0.3900, 0.3739$, and if you desaturate by 10%, it is $55.0338, 0.3448, 0.3499$.

Distribution



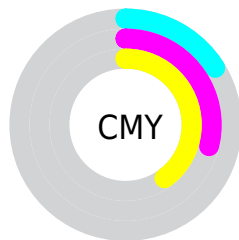
- Red (84%)
- Green (71%)
- Blue (60%)



- Red (84%)
- Yellow (79%)
- Blue (60%)



- Cyan (0%)
- Magenta (16%)
- Yellow (28%)
- Black (16%)




- Cyan (16%)
- Magenta (29%)
- Yellow (40%)

Brightness & Saturation Gradients


These gradients show how the Yxy color 49.2386, 0.3660, 0.3619 changes by changing the brightness by 10 percent. The first figure shows a shift by +10% for each color and the second figure -10%.

Similar to the brightness gradients but the following saturation gradients show a change of the Yxy color 49.2386, 0.3660, 0.3619 by changing the saturation by 10% instead.


 49.2386, 0.3660,
0.3619


 49.2386, 0.3660,
0.3619

383.6809, 0.3395,
0.3461

 34.8088, 0.3726,
0.3656


 89.0457, 0.3564,
0.3563

 23.5156, 0.3809,
0.3703


 115.1918, 0.3528,
0.3542

 14.9747, 0.3919,
0.3762


146.0122, 0.3497,
0.3523

 8.8016, 0.4070,
0.3839

181.8911, 0.3471,
0.3508

 4.6120, 0.4288,
0.3942

223.2130, 0.3448,
0.3494

 2.0215, 0.4667,
0.4115

270.3624, 0.3428,

 0.6199, 0.5605,

0.3481

0.4395

323.7235, 0.3410,
0.3471

0.0000, 0.0000,
0.0000

49.2386, 0.3660,
0.3619

49.2386, 0.3660,
0.3619

43.9886, 0.3900,
0.3739

55.0338, 0.3448,
0.3499

39.2597, 0.4168,
0.3853

61.3835, 0.3264,
0.3383

35.0360, 0.4459,
0.3952

68.3055, 0.3105,
0.3274

31.2981, 0.4761,
0.4022

75.8147, 0.2967,
0.3173

28.0249, 0.5058,
0.4052

83.5994, 0.2876,
0.3130

■ 25.1930, 0.5329,
0.4030

■ 90.8330, 0.2881,
0.3254

■ 22.7727, 0.5556,
0.3957

■ 93.0314, 0.2883,
0.3289

■ 22.4383, 0.5589,
0.3944

Harmonies

Analogous

The Analogous color harmony consists of three colors that are next to each other on the color wheel.



49.2386, 0.3655, 0.3405



49.2386, 0.3660, 0.3619



49.2386, 0.3517, 0.3758

Triad

The Triadic color harmony groups three colors that are evenly spaced from another and form a triangle on the color wheel.



49.2386, 0.3660, 0.3619



49.2386, 0.2762, 0.3396



49.2386, 0.2965, 0.2857

Complementary

The Complementary color scheme is a pair of colors which are on the opposite of each other on the color wheel.



49.2386, 0.3660, 0.3619



47.1522, 0.2679, 0.2936

Split Complementary

Split-complementary colors differ from the complementary color scheme. The scheme consists of three colors, the original color and two neighbors of the complement color.



49.2386, 0.2740, 0.2839



49.2386, 0.3660, 0.3619



49.2386, 0.2627, 0.3137

Square

The Square scheme is like the rectangle color scheme, but the four colors are evenly spaced on the color wheel.



49.2386, 0.3660, 0.3619



49.2386, 0.2996, 0.3635



49.2386, 0.2619, 0.2936



49.2386, 0.3244, 0.2978

Rectangle

The Rectangle color scheme consists of four colors that form a rectangle on the color wheel.



49.2386, 0.3660, 0.3619



49.2386, 0.3361, 0.3782



49.2386, 0.2619, 0.2936



49.2386, 0.2881, 0.2838

Sweetspot

The Sweet Spot groups the original color and five complimentary colors.



49.2409, 0.3660, 0.3619



90.7227, 0.3274, 0.3390



40.6893, 0.3403, 0.2876



19.1116, 0.3300, 0.3407



0.0000, 0.0000, 0.0000



21.4041, 0.3127, 0.3290

Same Dimension

The Same Dimension uses a secret algorithm to generate beautiful new colors.



49.2409, 0.3660, 0.3619



68.5833, 0.3797, 0.3690



62.6380, 0.3567, 0.3955



13.3173, 0.3280, 0.3394



13.7672, 0.5564, 0.3964



0.9939, 0.5269, 0.4198

Inverse Universe

The Inverse Universe completely reimagines the original color for something new.



47.1522, 0.2679, 0.2936



64.9928, 0.2586, 0.2850



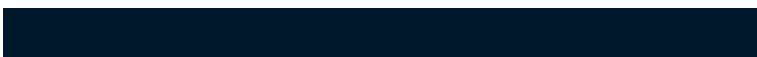
35.7663, 0.2636, 0.2525



13.1444, 0.2982, 0.3184



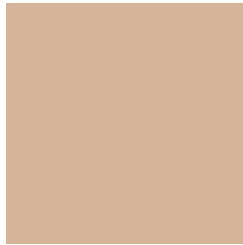
11.1480, 0.1828, 0.1781



0.8363, 0.1907, 0.2066

Previews

White Background



This preview shows how the Yxy color 49.2386, 0.3660, 0.3619 looks on a white background.

Color Contrast Check

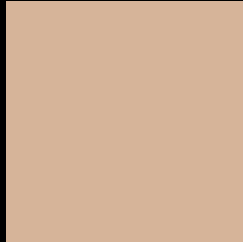
Large Text (above 18pt) WCAG AA × Fail

Any Text WCAG AA × Fail

Large Text (above 18pt) WCAG AAA × Fail

Any Text WCAG AAA × Fail

Black Background



This preview shows how the Yxy color 49.2386, 0.3660, 0.3619 looks on a black background.

Color Contrast Check

Large Text (above 18pt) WCAG AA ✓ Pass

Any Text WCAG AA ✓ Pass

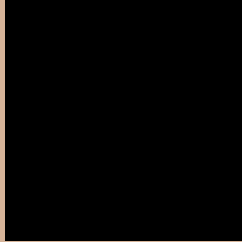
Large Text (above 18pt) WCAG AAA ✓ Pass

Any Text WCAG AAA ✓ Pass

If you want to check with other color combinations, try the [Color Contrast Checker](#).

Yxy 49.2386, 0.3660, 0.3619

Background



This preview shows how black text looks on a background with the Yxy color 49.2386, 0.3660, 0.3619.



This preview shows how white text looks on a background with the Yxy color 49.2386, 0.3660, 0.3619.

Color Blindness Simulation

Color vision deficiency is a very complex topic, and I could not describe the different causes any better than Wikipedia does, so if you want to learn more, you should check out their [article about color blindness](#).

Dichromacy



Original Color

49.2386, 0.3660, 0.3619

Protanopia

49.3884, 0.3464, 0.3672

Deuteranopia

49.1390, 0.3682, 0.3605



Tritanopia

49.2395, 0.3392, 0.3126

Trichromacy



Original Color

49.2386, 0.3660, 0.3619

Protanomaly

49.3440, 0.3531, 0.3654

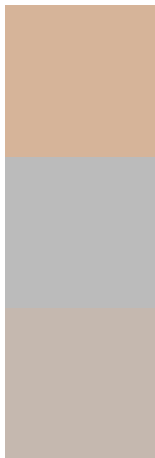
Deuteranomaly

48.9872, 0.3673, 0.3606

Tritanomaly

49.3306, 0.3493, 0.3303

Monochromacy



Original Color

49.2386, 0.3660, 0.3619

Achromatopsia

49.6933, 0.3127, 0.3290

Achromatomaly

49.2464, 0.3311, 0.3404

CSS Examples

Text

The CSS property to change the color of the text to Yxy 49.2386, 0.3660, 0.3619 is called "color". The color property can be set on classes, ids or directly on the HTML element.

This example shows how text in the color rgb(214, 180, 153) looks like.

```
.text, #text, p{  
    color:rgb(214, 180, 153)  
}
```

If you want to add a text shadow in that color use the text-shadow property, you can generate a text shadow directly with our [CSS Text Shadow Generator](#).

Here you see how black text with a 4 pixel rgb(214, 180, 153) colored shadow looks like.

```
.shadow{ text-shadow: 4px 4px 2px rgb(214, 180, 153) }
```

Border

The CSS property to change the border of an element to Yxy 49.2386, 0.3660, 0.3619 is called "border". The border property can be set on classes, ids or directly on the HTML element.

This example shows the color as border, it can be applied via the CSS property "border" or "border-color".

```
.border, #border, table{ border:4px solid rgb(214, 180, 153) }
```

If only the border color should be changed use the property `border-color`.

```
.border{ border-color:rgb(214, 180, 153) }
```

If you want to add a box shadow in that color use:

Here you see how a box with a 4 pixel `rgb(214, 180, 153)` colored shadow looks like.

```
.boxshadow{ -moz-box-shadow:4px 4px 4px  
4px rgb(214, 180, 153); -webkit-box-  
shadow:4px 4px 4px 4px rgb(214, 180, 153);  
box-shadow:4px 4px 4px 4px rgb(214, 180,  
153) }
```


Background

The CSS property to change the background color of an element to Yxy 49.2386, 0.3660, 0.3619 is called "background". The background property can be set on classes, ids or directly on the HTML element.

```
.background, #background, body{  
background: rgb(214, 180, 153) }
```

If only the background color should be changed can be used:

```
.background{ background-color: rgb(214,  
180, 153) }
```

This example shows the color as background, it is applied via the CSS property "background".

To optimize and compress your CSS code, you can use our [online CSS compressor and optimizer](#) based on csstidy. If you want to create a linear or radial gradient as background or border, check our [CSS Gradient Generator](#).

Hey! You found this booklet interesting? Support Converting Colors with the new Membership Option!

The pro membership hides all ads, plus gives you double the colors in the color bucket, and more awesome pro features!

[Learn more, Memberships starting at \\$2.50/m!](#)

**Follow me
on Twitter!**

@ConvertingColor