

Converting Colors

$Yxy(49.5957, 0.3368, 0.3291)$

Have a look what the booklet for
Yxy(49.5957, 0.3368, 0.3291)
contains.

Yxy(49.7938, 0.3362, 0.3291)	3
Conversions	4
Details	6
Harmonies	12
Previews	24
Color Blindness Simulation	27
CSS Examples	30

Color

Yxy(49.7938, 0.3362, 0.3291)

Conversions

Conversions Part 1

Format	Color
Hex	D0B5B5
RGB	208, 181, 181
RGB Percent	82%, 71%, 71%
CMY	0.1845, 0.2901, 0.2902
CMYK	0.00, 0.13, 0.13, 0.18
HSL	0°, 22%, 76%
HSV	0°, 13%, 82%
XYZ	50.8681, 49.7938, 50.6411
YIQ	189.0730, 16.0920, 5.7240

Conversions

Conversions Part 2

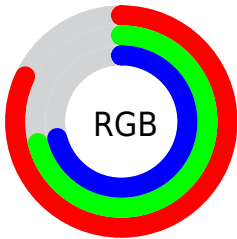
Format	Color
R _Y B	208, 181, 181
Decimal	13678005
CIE Lab	75.94, 9.65, 3.56
CIE LCh	76, 10.283, 20.282
Yxy	49.7938, 0.3362, 0.3291
Android (android.graphics.Color)	4291868085 (0xFFD0B5B5)
YUV	189.0730, -3.9800, 16.5990
Hunter-Lab	70.5647, 5.1872, 6.8456

Details

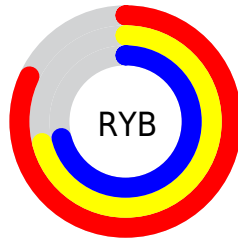
The Yxy color **49.7938, 0.3362, 0.3291** is a light color, and the websafe version is hex **CCCCCC**. A complement of this color would be **59.4551, 0.2931, 0.3289**, and the grayscale version is **50.9480, 0.3127, 0.3290**.

A 20% lighter version of the original color is **87.9428, 0.3248, 0.3290**, and **23.7692, 0.3427, 0.3291** is the 20% darker color. If you saturate the color by 10%, you get **41.1759, 0.3596, 0.3292**, and if you desaturate by 10%, it is **59.8034, 0.3175, 0.3290**.

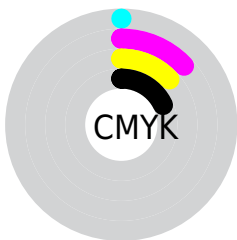
Distribution



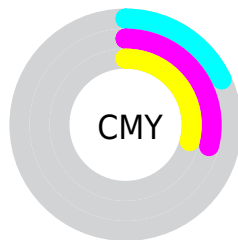
- Red (82%)
- Green (71%)
- Blue (71%)



- Red (82%)
- Yellow (71%)
- Blue (71%)



- Cyan (0%)
- Magenta (13%)
- Yellow (13%)
- Black (18%)



- Cyan (18%)
- Magenta (29%)
- Yellow (29%)

Brightness & Saturation Gradients


These gradients show how the Yxy color 49.7938, 0.3362, 0.3291 changes by changing the brightness by 10 percent. The first figure shows a shift by +10% for each color and the second figure -10%.


Similar to the brightness gradients but the following saturation gradients show a change of the Yxy color 49.7938, 0.3362, 0.3291 by changing the saturation by 10% instead.


 49.7938, 0.3362,
0.3291

 49.7938, 0.3362,
0.3291

385.8590, 0.3245,
0.3292

 35.2496, 0.3391,
0.3291


 89.8693, 0.3320,
0.3291

 23.8552, 0.3428,
0.3290


116.1693, 0.3304,
0.3291

 15.2262, 0.3477,
0.3289


147.1568, 0.3290,
0.3292

 8.9783, 0.3545,
0.3287

183.2161, 0.3279,
0.3292

 4.7270, 0.3646,
0.3282

224.7315, 0.3269,
0.3292

 2.0880, 0.3812,
0.3273

272.0876, 0.3260,

 0.6579, 0.4335,

0.3292

0.3313

325.6686, 0.3252,
0.3292

0.0000, 0.0000,
0.0000

49.7938, 0.3362,
0.3291

49.7938, 0.3362,
0.3291

41.1759, 0.3596,
0.3292

59.8034, 0.3175,
0.3290

33.8818, 0.3887,
0.3293

71.2554, 0.3026,
0.3290

27.8479, 0.4243,
0.3294

84.2061, 0.2906,
0.3289

23.0030, 0.4665,
0.3296

92.1445, 0.2849,
0.3289

19.2685, 0.5135,
0.3297

■ 16.5564, 0.5609,
0.3299

■ 14.7657, 0.6018,
0.3300

■ 13.7745, 0.6290,
0.3300

■ 13.4091, 0.6400,
0.3300

Harmonies

Analogous

The Analogous color harmony consists of three colors that are next to each other on the color wheel.



49.7938, 0.3255, 0.3174



49.7938, 0.3362, 0.3291



49.7938, 0.3405, 0.3410

Triad

The Triadic color harmony groups three colors that are evenly spaced from another and form a triangle on the color wheel.



49.7938, 0.3362, 0.3291



49.7938, 0.3135, 0.3504



49.7938, 0.2887, 0.3078

Complementary

The Complementary color scheme is a pair of colors which are on the opposite of each other on the color wheel.



49.7938, 0.3362, 0.3291



59.4551, 0.2931, 0.3289

Split Complementary

Split-complementary colors differ from the complementary color scheme. The scheme consists of three colors, the original color and two neighbors of the complement color.



49.7938, 0.2857, 0.3160



49.7938, 0.3362, 0.3291



49.7938, 0.2998, 0.3410

Square

The Square scheme is like the rectangle color scheme, but the four colors are evenly spaced on the color wheel.



49.7938, 0.3362, 0.3291



49.7938, 0.3272, 0.3537



49.7938, 0.2897, 0.3282



49.7938, 0.2980, 0.3052

Rectangle

The Rectangle color scheme consists of four colors that form a rectangle on the color wheel.



49.7938, 0.3362, 0.3291



49.7938, 0.3391, 0.3476



49.7938, 0.2897, 0.3282



49.7938, 0.2869, 0.3099

Sweetspot

The Sweet Spot groups the original color and five complimentary colors.



49.7960, 0.3362, 0.3291



93.0305, 0.3193, 0.3290



51.0012, 0.3142, 0.2973



19.6408, 0.3206, 0.3290



0.0000, 0.0000, 0.0000



21.4041, 0.3127, 0.3290

Same Dimension

The Same Dimension uses a secret algorithm to generate beautiful new colors.



49.7960, 0.3362, 0.3291



74.3409, 0.3432, 0.3291



55.5367, 0.3340, 0.3452



11.8102, 0.3291, 0.3291



8.3615, 0.6400, 0.3300



0.4682, 0.6397, 0.3303

Inverse Universe

The Inverse Universe completely reimagines the original color for something new.



59.4551, 0.2931, 0.3289



93.0396, 0.2884, 0.3289



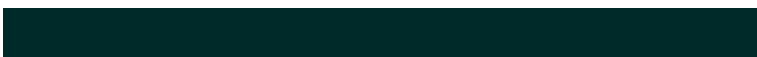
53.1714, 0.2926, 0.3122



13.4050, 0.2983, 0.3289



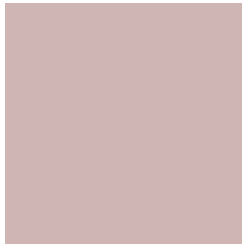
30.8908, 0.2246, 0.3284



1.7279, 0.2246, 0.3285

Previews

White Background



This preview shows how the Yxy color 49.7938, 0.3362, 0.3291 looks on a white background.

Color Contrast Check

Large Text (above 18pt) WCAG AA × Fail

Any Text WCAG AA × Fail

Large Text (above 18pt) WCAG AAA × Fail

Any Text WCAG AAA × Fail

Black Background



This preview shows how the Yxy color 49.7938, 0.3362, 0.3291 looks on a black background.

Color Contrast Check

Large Text (above 18pt) WCAG AA ✓ Pass

Any Text WCAG AA ✓ Pass

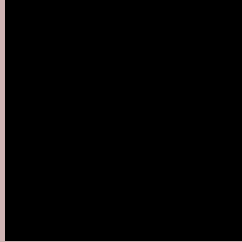
Large Text (above 18pt) WCAG AAA ✓ Pass

Any Text WCAG AAA ✓ Pass

If you want to check with other color combinations, try the [Color Contrast Checker](#).

Yxy 49.7938, 0.3362, 0.3291

Background



This preview shows how black text looks on a background with the Yxy color 49.7938, 0.3362, 0.3291.



This preview shows how white text looks on a background with the Yxy color 49.7938, 0.3362, 0.3291.

Color Blindness Simulation

Color vision deficiency is a very complex topic, and I could not describe the different causes any better than Wikipedia does, so if you want to learn more, you should check out their [article about color blindness](#).

Dichromacy



Original Color

49.7938, 0.3362, 0.3291

Protanopia

49.6549, 0.3185, 0.3315

Deuteranopia

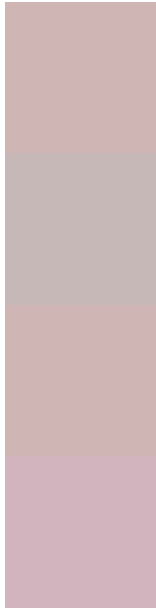
49.7938, 0.3362, 0.3291



Tritanopia

49.7921, 0.3282, 0.3123

Trichromacy



Original Color

49.7938, 0.3362, 0.3291

Protanomaly

49.5702, 0.3246, 0.3303

Deuteranomaly

49.7938, 0.3362, 0.3291

Tritanomaly

49.8719, 0.3305, 0.3182

Monochromacy



Original Color

49.7938, 0.3362, 0.3291

Achromatopsia

50.8881, 0.3127, 0.3290

Achromatomaly

50.3987, 0.3211, 0.3290

CSS Examples

Text

The CSS property to change the color of the text to Yxy 49.7938, 0.3362, 0.3291 is called "color". The color property can be set on classes, ids or directly on the HTML element.

This example shows how text in the color `rgb(208, 181, 181)` looks like.

```
.text, #text, p{  
    color:rgb(208, 181, 181)  
}
```

If you want to add a text shadow in that color use the text-shadow property, you can generate a text shadow directly with our [CSS Text Shadow Generator](#).

Here you see how black text with a 4 pixel rgb(208, 181, 181) colored shadow looks like.

```
.shadow{ text-shadow: 4px 4px 2px rgb(208, 181, 181) }
```

Border

The CSS property to change the border of an element to Yxy 49.7938, 0.3362, 0.3291 is called "border". The border property can be set on classes, ids or directly on the HTML element.

This example shows the color as border, it can be applied via the CSS property "border" or "border-color".

```
.border, #border, table{ border:4px solid rgb(208, 181, 181) }
```

If only the border color should be changed use the property `border-color`.

```
.border{ border-color:rgb(208, 181, 181) }
```

If you want to add a box shadow in that color use:

Here you see how a box with a 4 pixel `rgb(208, 181, 181)` colored shadow looks like.

```
.boxshadow{ -moz-box-shadow:4px 4px 4px  
4px rgb(208, 181, 181); -webkit-box-  
shadow:4px 4px 4px 4px rgb(208, 181, 181);  
box-shadow:4px 4px 4px 4px rgb(208, 181,  
181) }
```


Background

The CSS property to change the background color of an element to Yxy 49.7938, 0.3362, 0.3291 is called "background". The background property can be set on classes, ids or directly on the HTML element.

```
.background, #background, body{  
background: rgb(208, 181, 181) }
```

If only the background color should be changed can be used:

```
.background{ background-color: rgb(208,  
181, 181) }
```

This example shows the color as background, it is applied via the CSS property "background".

To optimize and compress your CSS code, you can use our [online CSS compressor and optimizer](#) based on csstidy. If you want to create a linear or radial gradient as background or border, check our [CSS Gradient Generator](#).

Hey! You found this booklet interesting? Support Converting Colors with the new Membership Option!

The pro membership hides all ads, plus gives you double the colors in the color bucket, and more awesome pro features!

[Learn more, Memberships starting at \\$2.50/m!](#)

**Follow me
on Twitter!**

@ConvertingColor