

# Converting Colors

$Y_{xy}(49.6309, 0.3354, 0.3351)$

Have a look what the booklet for  
Yxy(49.6309, 0.3354, 0.3351)  
contains.

<b>Yxy(49.4676, 0.3359, 0.3352)</b> .....	3
<b>Conversions</b> .....	4
<b>Details</b> .....	6
<b>Harmonies</b> .....	12
<b>Previews</b> .....	24
<b>Color Blindness Simulation</b> .....	27
<b>CSS Examples</b> .....	30

# Color

**Yxy(49.4676, 0.3359, 0.3352)**

# Conversions

## Conversions Part 1

<b>Format</b>	<b>Color</b>
Hex	CCB6B1
RGB	204, 182, 177
RGB Percent	80%, 71%, 69%
CMY	0.1999, 0.2863, 0.3058
CMYK	0.00, 0.11, 0.13, 0.20
HSL	11°, 21%, 75%
HSV	11°, 13%, 80%
XYZ	49.5709, 49.4676, 48.5379
YIQ	188.0080, 14.7170, 3.1090

# Conversions

## Conversions Part 2

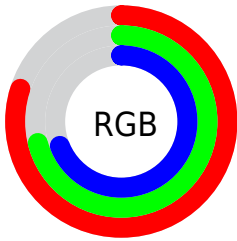
Format	Color
R <sub>Y</sub> B	204, 183, 177
Decimal	13416113
CIE Lab	75.74, 7.03, 5.39
CIE LCh	76, 8.863, 37.485
Yxy	49.4676, 0.3359, 0.3352
Android (android.graphics.Color)	4291606193 (0xFFCCB6B1)
YUV	188.0080, -5.4269, 14.0250
Hunter-Lab	70.3332, 2.7238, 8.3164

# Details

The Yxy color  $49.4676, 0.3359, 0.3352$  is a light color, and the websafe version is hex `CCCCCC`. A complement of this color would be  $54.5749, 0.2925, 0.3227$ , and the grayscale version is  $50.3221, 0.3127, 0.3290$ .

A 20% lighter version of the original color is  $88.2923, 0.3273, 0.3340$ , and  $23.6398, 0.3435, 0.3374$  is the 20% darker color. If you saturate the color by 10%, you get  $42.3009, 0.3578, 0.3402$ , and if you desaturate by 10%, it is  $57.5701, 0.3179, 0.3305$ .

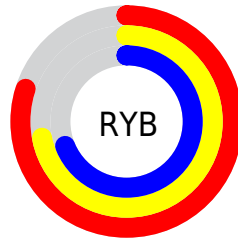
# Distribution



Red (80%)

Green (71%)

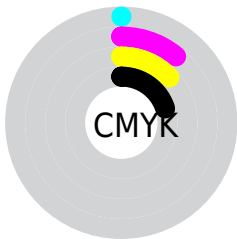
Blue (69%)



Red (80%)

Yellow (72%)

Blue (69%)

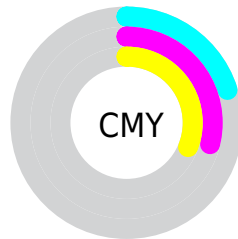


Cyan (0%)

Magenta (11%)

Yellow (13%)

Black (20%)



Cyan (20%)

Magenta (29%)


Yellow (31%)

# Brightness & Saturation Gradients

These gradients show how the Yxy color 49.4676, 0.3359, 0.3352 changes by changing the brightness by 10 percent. The first figure shows a shift by +10% for each color and the second figure -10%.


Similar to the brightness gradients but the following saturation gradients show a change of the Yxy color 49.4676, 0.3359, 0.3352 by changing the saturation by 10% instead.





 49.4676, 0.3359,  
0.3352

 49.4676, 0.3359,  
0.3352


384.5803, 0.3244,  
0.3322

 34.9906, 0.3388,  
0.3359


 89.3855, 0.3317,  
0.3342

 23.6556, 0.3424,  
0.3368


115.5952, 0.3301,  
0.3338

 15.0783, 0.3473,  
0.3379


146.4846, 0.3288,  
0.3334

 8.8744, 0.3541,  
0.3394

182.4380, 0.3277,  
0.3331

 4.6593, 0.3642,  
0.3415

223.8399, 0.3267,  
0.3329

 2.0488, 0.3806,  
0.3446

271.0746, 0.3258,

 0.6356, 0.4494,

0.3326

0.3682

324.5266, 0.3250,  
0.3324

0.0000, 0.0000,  
0.0000

49.4676, 0.3359,  
0.3352

49.4676, 0.3359,  
0.3352

42.3009, 0.3578,  
0.3402

57.5701, 0.3179,  
0.3305

36.0299, 0.3841,  
0.3454

66.6338, 0.3030,  
0.3261

30.6210, 0.4155,  
0.3504

76.6911, 0.2906,  
0.3221

26.0362, 0.4519,  
0.3547

87.5356, 0.2823,  
0.3222

22.2345, 0.4924,  
0.3575

91.5804, 0.2827,  
0.3289

■ 19.1715, 0.5344,  
0.3580

■ 16.7980, 0.5739,  
0.3554

■ 15.0585, 0.6054,  
0.3496

■ 14.2031, 0.6213,  
0.3449

# Harmonies

## Analogous

The Analogous color harmony consists of three colors that are next to each other on the color wheel.



49.4676, 0.3296, 0.3246



49.4676, 0.3359, 0.3352



49.4676, 0.3359, 0.3444

# Triad

The Triadic color harmony groups three colors that are evenly spaced from another and form a triangle on the color wheel.



49.4676, 0.3359, 0.3352



49.4676, 0.3064, 0.3433



49.4676, 0.2960, 0.3087

# Complementary

The Complementary color scheme is a pair of colors which are on the opposite of each other on the color wheel.



49.4676, 0.3359, 0.3352



54.5749, 0.2925, 0.3227

# Split Complementary

Split-complementary colors differ from the complementary color scheme. The scheme consists of three colors, the original color and two neighbors of the complement color.



49.4676, 0.2901, 0.3132



49.4676, 0.3359, 0.3352



49.4676, 0.2960, 0.3332

# Square

The Square scheme is like the rectangle color scheme, but the four colors are evenly spaced on the color wheel.



49.4676, 0.3359, 0.3352



49.4676, 0.3187, 0.3494



49.4676, 0.2901, 0.3221



49.4676, 0.3064, 0.3095



# Rectangle

The Rectangle color scheme consists of four colors that form a rectangle on the color wheel.



49.4676, 0.3359, 0.3352



49.4676, 0.3322, 0.3485



49.4676, 0.2901, 0.3221



49.4676, 0.2934, 0.3096

# Sweetspot

The Sweet Spot groups the original color and five complimentary colors.



49.4698, 0.3359, 0.3352



94.1672, 0.3192, 0.3308



48.4175, 0.3182, 0.3024



19.9271, 0.3205, 0.3312



0.0000, 0.0000, 0.0000



21.4041, 0.3127, 0.3290

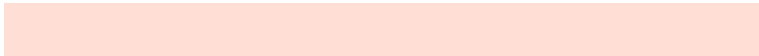


# Same Dimension

The Same Dimension uses a secret algorithm to generate beautiful new colors.



49.4698, 0.3359, 0.3352



78.2221, 0.3420, 0.3367



55.2562, 0.3337, 0.3514



11.5428, 0.3286, 0.3333



9.0378, 0.6193, 0.3465



0.5700, 0.5829, 0.3754

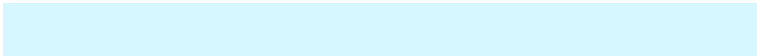


# Inverse Universe

The Inverse Universe completely reimagines the original color for something new.



54.5749, 0.2925, 0.3227



88.3584, 0.2881, 0.3212



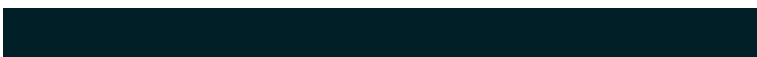
48.6453, 0.2921, 0.3055



12.3615, 0.2983, 0.3246



20.1217, 0.2082, 0.2694

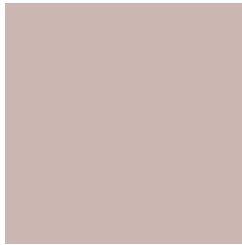


1.1317, 0.2118, 0.2823



# Previews

## White Background



This preview shows how the Yxy color 49.4676, 0.3359, 0.3352 looks on a white background.

## Color Contrast Check

Large Text (above 18pt) WCAG AA × Fail

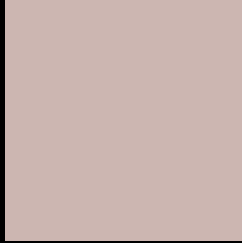
Any Text WCAG AA × Fail

Large Text (above 18pt) WCAG AAA × Fail

Any Text WCAG AAA × Fail



# Black Background



This preview shows how the Yxy color 49.4676, 0.3359, 0.3352 looks on a black background.

## Color Contrast Check

Large Text (above 18pt) WCAG AA ✓ Pass

Any Text WCAG AA ✓ Pass

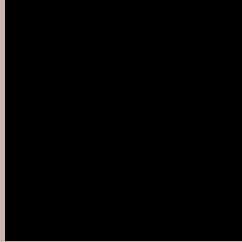
Large Text (above 18pt) WCAG AAA ✓ Pass

Any Text WCAG AAA ✓ Pass

If you want to check with other color combinations, try the [Color Contrast Checker](#).

**Yxy 49.4676, 0.3359, 0.3352**

## Background



This preview shows how black text looks on a background with the Yxy color 49.4676, 0.3359, 0.3352.



This preview shows how white text looks on a background with the Yxy color 49.4676, 0.3359, 0.3352.

# Color Blindness Simulation

Color vision deficiency is a very complex topic, and I could not describe the different causes any better than Wikipedia does, so if you want to learn more, you should check out their [article about color blindness](#).

## Dichromacy



### Original Color

49.4676, 0.3359, 0.3352

### Protanopia

49.5790, 0.3233, 0.3379

### Deuteranopia

49.2267, 0.3398, 0.3327



## Tritanopia

49.2571, 0.3239, 0.3109

# Trichromacy



## Original Color

49.4676, 0.3359, 0.3352

## Protanomaly

49.6480, 0.3276, 0.3378

## Deuteranomaly

49.4875, 0.3387, 0.3340

## Tritanomaly

49.2525, 0.3279, 0.3193

# Monochromacy



## Original Color

49.4676, 0.3359, 0.3352

## Achromatopsia

50.2886, 0.3127, 0.3290

## Achromatomaly

50.0478, 0.3210, 0.3315

# CSS Examples

## Text

The CSS property to change the color of the text to Yxy 49.4676, 0.3359, 0.3352 is called "color". The color property can be set on classes, ids or directly on the HTML element.

This example shows how text in the color `rgb(204, 182, 177)` looks like.

```
.text, #text, p{  
    color:rgb(204, 182, 177)  
}
```

If you want to add a text shadow in that color use the text-shadow property, you can generate a text shadow directly with our [CSS Text Shadow Generator](#).

Here you see how black text with a 4 pixel rgb(204, 182, 177) colored shadow looks like.

```
.shadow{ text-shadow: 4px 4px 2px rgb(204, 182, 177) }
```

## Border

The CSS property to change the border of an element to Yxy 49.4676, 0.3359, 0.3352 is called "border". The border property can be set on classes, ids or directly on the HTML element.

This example shows the color as border, it can be applied via the CSS property "border" or "border-color".

```
.border, #border, table{ border:4px solid rgb(204, 182, 177) }
```

If only the border color should be changed use the property `border-color`.

```
.border{ border-color:rgb(204, 182, 177) }
```

If you want to add a box shadow in that color use:

Here you see how a box with a 4 pixel `rgb(204, 182, 177)` colored shadow looks like.

```
.boxshadow{ -moz-box-shadow:4px 4px 4px  
4px rgb(204, 182, 177); -webkit-box-  
shadow:4px 4px 4px 4px rgb(204, 182, 177);  
box-shadow:4px 4px 4px 4px rgb(204, 182,  
177) }
```



# Background

The CSS property to change the background color of an element to Yxy 49.4676, 0.3359, 0.3352 is called "background". The background property can be set on classes, ids or directly on the HTML element.

```
.background, #background, body{  
background: rgb(204, 182, 177) }
```

If only the background color should be changed can be used:

```
.background{ background-color: rgb(204,  
182, 177) }
```

This example shows the color as background, it is applied via the CSS property "background".

To optimize and compress your CSS code, you can use our [online CSS compressor and optimizer](#) based on csstidy. If you want to create a linear or radial gradient as background or border, check our [CSS Gradient Generator](#).

Hey! You found this booklet interesting? Support Converting Colors with the new Membership Option!

The pro membership hides all ads, plus gives you double the colors in the color bucket, and more awesome pro features!

**[Learn more, Memberships starting at \\$2.50/m!](#)**

**Follow me  
on Twitter!**

@ConvertingColor