

Converting Colors

$Y_{xy}(49.6570, 0.3435, 0.3313)$

Have a look what the booklet for
Yxy(49.6570, 0.3435, 0.3313)
contains.

Yxy(49.6007, 0.3436, 0.3303)	3
<i>Conversions</i>	4
<i>Details</i>	6
<i>Harmonies</i>	12
<i>Previews</i>	24
<i>Color Blindness Simulation</i>	27
<i>CSS Examples</i>	30

Color

Yxy(49.6007, 0.3436, 0.3303)

Conversions

Conversions Part 1

Format	Color
Hex	D5B3B2
RGB	213, 179, 178
RGB Percent	84%, 70%, 70%
CMY	0.1647, 0.2980, 0.3020
CMYK	0.00, 0.16, 0.16, 0.16
HSL	2°, 29%, 77%
HSV	2°, 16%, 84%
XYZ	51.5979, 49.6007, 48.9700
YIQ	189.0520, 20.5850, 6.8970

Conversions

Conversions Part 2

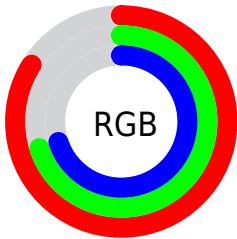
Format	Color
R _Y B	213, 179, 178
Decimal	14005170
CIE Lab	75.82, 12.09, 5.08
CIE LCh	76, 13.116, 22.802
Yxy	49.6007, 0.3436, 0.3303
Android (android.graphics.Color)	4292195250 (0xFFD5B3B2)
YUV	189.0520, -5.4486, 21.0024
Hunter-Lab	70.4278, 7.5270, 8.0738

Details

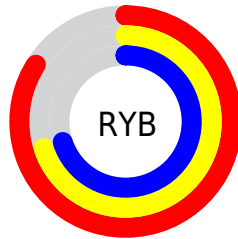
The Yxy color **49.6007, 0.3436, 0.3303** is a light color, and the websafe version is hex **CC9999**. A complement of this color would be **61.3564, 0.2880, 0.3277**, and the grayscale version is **50.9446, 0.3127, 0.3290**.

A 20% lighter version of the original color is **86.6172, 0.3269, 0.3300**, and **23.6715, 0.3530, 0.3307** is the 20% darker color. If you saturate the color by 10%, you get **41.1328, 0.3686, 0.3312**, and if you desaturate by 10%, it is **59.4499, 0.3235, 0.3295**.

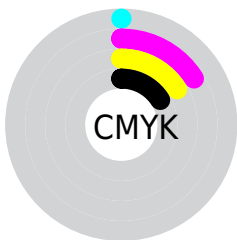
Distribution



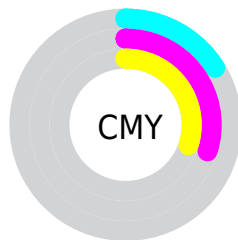
- Red (84%)
- Green (70%)
- Blue (70%)



- Red (84%)
- Yellow (70%)
- Blue (70%)



- Cyan (0%)
- Magenta (16%)
- Yellow (16%)
- Black (16%)



- Cyan (16%)
- Magenta (30%)
- Yellow (30%)

Brightness & Saturation Gradients


These gradients show how the Yxy color 49.6007, 0.3436, 0.3303 changes by changing the brightness by 10 percent. The first figure shows a shift by +10% for each color and the second figure -10%.


Similar to the brightness gradients but the following saturation gradients show a change of the Yxy color 49.6007, 0.3436, 0.3303 by changing the saturation by 10% instead.


 49.6007, 0.3436,
0.3303

 49.6007, 0.3436,
0.3303

385.1024, 0.3282,
0.3298

 35.0962, 0.3474,
0.3304


 89.5830, 0.3380,
0.3302

 23.7370, 0.3523,
0.3304


115.8296, 0.3359,
0.3301

 15.1387, 0.3588,
0.3304


146.7590, 0.3342,
0.3300

 8.9168, 0.3678,
0.3304

182.7556, 0.3326,
0.3300

 4.6869, 0.3812,
0.3301

224.2039, 0.3313,
0.3300

 2.0648, 0.4031,
0.3292

271.4882, 0.3302,

 0.6447, 0.4785,

0.3299

0.3391

324.9929, 0.3291,
0.3299

0.0000, 0.0000,
0.0000

49.6007, 0.3436,
0.3303

49.6007, 0.3436,
0.3303

41.1328, 0.3686,
0.3312

59.4499, 0.3235,
0.3295

33.9782, 0.3995,
0.3321

70.7313, 0.3074,
0.3287

28.0732, 0.4368,
0.3329

83.5012, 0.2944,
0.3281

23.3462, 0.4802,
0.3335

92.8876, 0.2877,
0.3289

19.7180, 0.5273,
0.3338

■ 17.1003, 0.5731,
0.3335

■ 15.3907, 0.6104,
0.3326

■ 14.4651, 0.6331,
0.3314

■ 14.2808, 0.6383,
0.3314

Harmonies

Analogous

The Analogous color harmony consists of three colors that are next to each other on the color wheel.



49.6007, 0.3303, 0.3154



49.6007, 0.3436, 0.3303



49.6007, 0.3483, 0.3453

Triad

The Triadic color harmony groups three colors that are evenly spaced from another and form a triangle on the color wheel.



49.6007, 0.3436, 0.3303



49.6007, 0.3121, 0.3558



49.6007, 0.2828, 0.3013

Complementary

The Complementary color scheme is a pair of colors which are on the opposite of each other on the color wheel.



49.6007, 0.3436, 0.3303



61.3564, 0.2880, 0.3277

Split Complementary

Split-complementary colors differ from the complementary color scheme. The scheme consists of three colors, the original color and two neighbors of the complement color.



49.6007, 0.2784, 0.3112



49.6007, 0.3436, 0.3303



49.6007, 0.2949, 0.3430

Square

The Square scheme is like the rectangle color scheme, but the four colors are evenly spaced on the color wheel.



49.6007, 0.3436, 0.3303



49.6007, 0.3298, 0.3607



49.6007, 0.2827, 0.3265



49.6007, 0.2952, 0.2989

Rectangle

The Rectangle color scheme consists of four colors that form a rectangle on the color wheel.



49.6007, 0.3436, 0.3303



49.6007, 0.3460, 0.3535



49.6007, 0.2827, 0.3265



49.6007, 0.2804, 0.3038

Sweetspot

The Sweet Spot groups the original color and five complimentary colors.



49.6029, 0.3436, 0.3303



91.5582, 0.3210, 0.3294



50.7610, 0.3151, 0.2892



19.3528, 0.3223, 0.3294



0.0000, 0.0000, 0.0000



21.4041, 0.3127, 0.3290

Same Dimension

The Same Dimension uses a secret algorithm to generate beautiful new colors.



49.6029, 0.3436, 0.3303



69.5070, 0.3524, 0.3306



56.8802, 0.3403, 0.3505



12.4775, 0.3290, 0.3297



8.7479, 0.6378, 0.3318



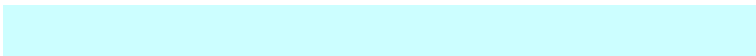
0.5483, 0.6306, 0.3375

Inverse Universe

The Inverse Universe completely reimagines the original color for something new.



61.3564, 0.2880, 0.3277



90.6437, 0.2826, 0.3274



53.2625, 0.2870, 0.3066



14.0436, 0.2983, 0.3283



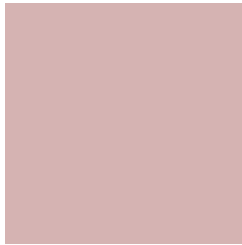
30.1811, 0.2222, 0.3200



1.8401, 0.2227, 0.3216

Previews

White Background



This preview shows how the Yxy color 49.6007, 0.3436, 0.3303 looks on a white background.

Color Contrast Check

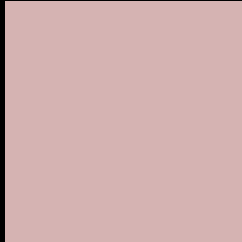
Large Text (above 18pt) WCAG AA × Fail

Any Text WCAG AA × Fail

Large Text (above 18pt) WCAG AAA × Fail

Any Text WCAG AAA × Fail

Black Background



This preview shows how the Yxy color 49.6007, 0.3436, 0.3303 looks on a black background.

Color Contrast Check

Large Text (above 18pt) WCAG AA ✓ Pass

Any Text WCAG AA ✓ Pass

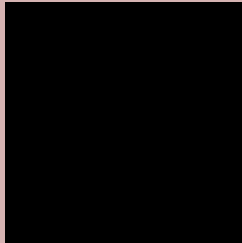
Large Text (above 18pt) WCAG AAA ✓ Pass

Any Text WCAG AAA ✓ Pass

If you want to check with other color combinations, try the [Color Contrast Checker](#).

Yxy 49.6007, 0.3436, 0.3303

Background



This preview shows how black text looks on a background with the Yxy color 49.6007, 0.3436, 0.3303.



This preview shows how white text looks on a background with the Yxy color 49.6007, 0.3436, 0.3303.

Color Blindness Simulation

Color vision deficiency is a very complex topic, and I could not describe the different causes any better than Wikipedia does, so if you want to learn more, you should check out their [article about color blindness](#).

Dichromacy



Original Color

49.6007, 0.3436, 0.3303

Protanopia

49.7017, 0.3209, 0.3341

Deuteranopia

49.8174, 0.3396, 0.3327



Tritanopia

49.6529, 0.3345, 0.3125

Trichromacy



Original Color

49.6007, 0.3436, 0.3303

Protanomaly

49.4825, 0.3289, 0.3315

Deuteranomaly

49.5585, 0.3407, 0.3315

Tritanomaly

49.6821, 0.3378, 0.3196

Monochromacy



Original Color

49.6007, 0.3436, 0.3303

Achromatopsia

50.8881, 0.3127, 0.3290

Achromatomaly

50.2065, 0.3237, 0.3290

CSS Examples

Text

The CSS property to change the color of the text to Yxy 49.6007, 0.3436, 0.3303 is called "color". The color property can be set on classes, ids or directly on the HTML element.

This example shows how text in the color `rgb(213, 179, 178)` looks like.

```
.text, #text, p{  
    color:rgb(213, 179, 178)  
}
```

If you want to add a text shadow in that color use the text-shadow property, you can generate a text shadow directly with our [CSS Text Shadow Generator](#).

Here you see how black text with a 4 pixel rgb(213, 179, 178) colored shadow looks like.

```
.shadow{ text-shadow: 4px 4px 2px rgb(213, 179, 178) }
```

Border

The CSS property to change the border of an element to Yxy 49.6007, 0.3436, 0.3303 is called "border". The border property can be set on classes, ids or directly on the HTML element.

This example shows the color as border, it can be applied via the CSS property "border" or "border-color".

```
.border, #border, table{ border:4px solid rgb(213, 179, 178) }
```

If only the border color should be changed use the property `border-color`.

```
.border{ border-color:rgb(213, 179, 178) }
```

If you want to add a box shadow in that color use:

Here you see how a box with a 4 pixel `rgb(213, 179, 178)` colored shadow looks like.

```
.boxshadow{ -moz-box-shadow:4px 4px 4px  
4px rgb(213, 179, 178); -webkit-box-  
shadow:4px 4px 4px 4px rgb(213, 179, 178);  
box-shadow:4px 4px 4px 4px rgb(213, 179,  
178) }
```


Background

The CSS property to change the background color of an element to Yxy 49.6007, 0.3436, 0.3303 is called "background". The background property can be set on classes, ids or directly on the HTML element.

```
.background, #background, body{  
background: rgb(213, 179, 178) }
```

If only the background color should be changed can be used:

```
.background{ background-color: rgb(213,  
179, 178) }
```

This example shows the color as background, it is applied via the CSS property "background".

To optimize and compress your CSS code, you can use our [online CSS compressor and optimizer](#) based on csstidy. If you want to create a linear or radial gradient as background or border, check our [CSS Gradient Generator](#).

Hey! You found this booklet interesting? Support Converting Colors with the new Membership Option!

The pro membership hides all ads, plus gives you double the colors in the color bucket, and more awesome pro features!

[Learn more, Memberships starting at \\$2.50/m!](#)

**Follow me
on Twitter!**

@ConvertingColor