

Converting Colors

$Y_{xy}(49.6589, 0.3783, 0.3746)$

Have a look what the booklet for
Yxy(49.6589, 0.3783, 0.3746)
contains.

Yxy(49.5311, 0.3785, 0.3735)	3
<i>Conversions</i>	4
<i>Details</i>	6
<i>Harmonies</i>	12
<i>Previews</i>	24
<i>Color Blindness Simulation</i>	27
<i>CSS Examples</i>	30

Color

Yxy(49.5311, 0.3785, 0.3735)

Conversions

Conversions Part 1

Format	Color
Hex	DAB48F
RGB	218, 180, 143
RGB Percent	85%, 71%, 56%
CMY	0.1450, 0.2941, 0.4393
CMYK	0.00, 0.17, 0.34, 0.15
HSL	30°, 50%, 71%
HSV	30°, 34%, 85%
XYZ	50.1942, 49.5311, 32.8881
YIQ	187.1440, 34.5250, -3.4510

Conversions

Conversions Part 2

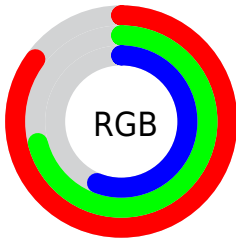
Format	Color
R _Y B	218, 216, 143
Decimal	14333071
CIE Lab	75.78, 8.54, 24.05
CIE LCh	76, 25.524, 70.445
Yxy	49.5311, 0.3785, 0.3735
Android (android.graphics.Color)	4292523151 (0xFFDAB48F)
YUV	187.1440, -21.7630, 27.0607
Hunter-Lab	70.3783, 4.1450, 21.5583

Details

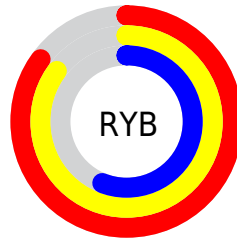
The Yxy color **49.5311, 0.3785, 0.3735** is a light color, and the websafe version is hex **FFCC99**. A complement of this color would be **43.9401, 0.2577, 0.2796**, and the grayscale version is **49.8908, 0.3127, 0.3290**.

A 20% lighter version of the original color is **85.2821, 0.3511, 0.3682**, and **23.6328, 0.3974, 0.3846** is the 20% darker color. If you saturate the color by 10%, you get **44.6531, 0.4030, 0.3865**, and if you desaturate by 10%, it is **54.8974, 0.3564, 0.3601**.

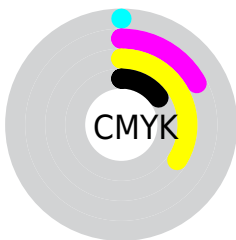
Distribution



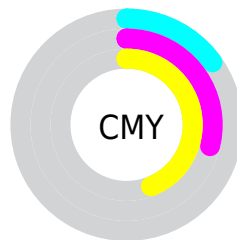
- Red (85%)
- Green (71%)
- Blue (56%)



- Red (85%)
- Yellow (85%)
- Blue (56%)



- Cyan (0%)
- Magenta (17%)
- Yellow (34%)
- Black (15%)





- Cyan (15%)
- Magenta (29%)
- Yellow (44%)

Brightness & Saturation Gradients


These gradients show how the Yxy color 49.5311, 0.3785, 0.3735 changes by changing the brightness by 10 percent. The first figure shows a shift by +10% for each color and the second figure -10%.

Similar to the brightness gradients but the following saturation gradients show a change of the Yxy color 49.5311, 0.3785, 0.3735 by changing the saturation by 10% instead.

 49.5311, 0.3785,
0.3735


 49.5311, 0.3785,
0.3735


384.8294, 0.3459,
0.3523

 35.0410, 0.3865,
0.3784


 89.4797, 0.3668,
0.3660

 23.6944, 0.3966,
0.3845


 115.7070, 0.3623,
0.3632

 15.1071, 0.4097,
0.3921


146.6155, 0.3585,
0.3607

 8.8946, 0.4275,
0.4019

182.5896, 0.3553,
0.3586

 4.6725, 0.4525,
0.4142

224.0136, 0.3525,
0.3567

 2.0564, 0.5072,
0.4451

271.2720, 0.3500,

 0.6399, 0.5607,

0.3550

0.4393

324.7491, 0.3478,
0.3536

0.0000, 0.0000,
0.0000

49.5311, 0.3785,
0.3735

49.5311, 0.3785,
0.3735

44.6531, 0.4030,
0.3865

54.8974, 0.3564,
0.3601

40.2407, 0.4296,
0.3984

60.7600, 0.3368,
0.3469

36.2795, 0.4574,
0.4078

67.1350, 0.3196,
0.3343

32.7513, 0.4851,
0.4137

74.0362, 0.3046,
0.3225

29.6363, 0.5110,
0.4148

81.4762, 0.2916,
0.3116

■ 26.9115, 0.5332,
0.4103

■ 88.1984, 0.2903,
0.3200

■ 25.5456, 0.5442,
0.4061

■ 93.6479, 0.2906,
0.3289

Harmonies

Analogous

The Analogous color harmony consists of three colors that are next to each other on the color wheel.



49.5311, 0.3812, 0.3473



49.5311, 0.3785, 0.3735



49.5311, 0.3576, 0.3897

Triad

The Triadic color harmony groups three colors that are evenly spaced from another and form a triangle on the color wheel.



49.5311, 0.3785, 0.3735



49.5311, 0.2631, 0.3369



49.5311, 0.2973, 0.2766

Complementary

The Complementary color scheme is a pair of colors which are on the opposite of each other on the color wheel.



49.5311, 0.3785, 0.3735



43.9401, 0.2577, 0.2796

Split Complementary

Split-complementary colors differ from the complementary color scheme. The scheme consists of three colors, the original color and two neighbors of the complement color.



49.5311, 0.2676, 0.2719



49.5311, 0.3785, 0.3735



49.5311, 0.2488, 0.3044

Square

The Square scheme is like the rectangle color scheme, but the four colors are evenly spaced on the color wheel.



49.5311, 0.3785, 0.3735



49.5311, 0.2906, 0.3691



49.5311, 0.2504, 0.2813



49.5311, 0.3328, 0.2933

Rectangle

The Rectangle color scheme consists of four colors that form a rectangle on the color wheel.



49.5311, 0.3785, 0.3735



49.5311, 0.3367, 0.3914



49.5311, 0.2504, 0.2813



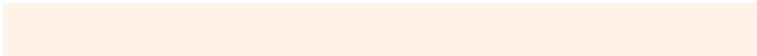
49.5311, 0.2863, 0.2735

Sweetspot

The Sweet Spot groups the original color and five complimentary colors.



49.5334, 0.3785, 0.3735



90.4991, 0.3291, 0.3414



37.9100, 0.3519, 0.2829



19.0977, 0.3315, 0.3432



0.0000, 0.0000, 0.0000



21.4041, 0.3127, 0.3290

Same Dimension

The Same Dimension uses a secret algorithm to generate beautiful new colors.



49.5334, 0.3785, 0.3735



65.7374, 0.3953, 0.3826



66.3950, 0.3648, 0.4131



14.1074, 0.3279, 0.3406



15.5166, 0.5419, 0.4079



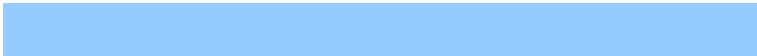
1.1775, 0.5167, 0.4279

Inverse Universe

The Inverse Universe completely reimagines the original color for something new.



43.9401, 0.2577, 0.2796



56.6516, 0.2465, 0.2677



30.9124, 0.2510, 0.2283



13.7020, 0.2982, 0.3172



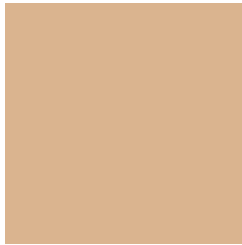
9.9846, 0.1780, 0.1607



0.8192, 0.1861, 0.1900

Previews

White Background



This preview shows how the Yxy color 49.5311, 0.3785, 0.3735 looks on a white background.

Color Contrast Check

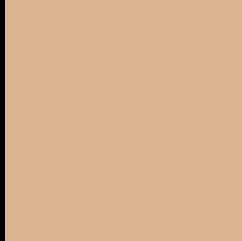
Large Text (above 18pt) WCAG AA × Fail

Any Text WCAG AA × Fail

Large Text (above 18pt) WCAG AAA × Fail

Any Text WCAG AAA × Fail

Black Background



This preview shows how the Yxy color 49.5311, 0.3785, 0.3735 looks on a black background.

Color Contrast Check

Large Text (above 18pt) WCAG AA ✓ Pass

Any Text WCAG AA ✓ Pass

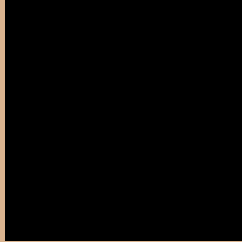
Large Text (above 18pt) WCAG AAA ✓ Pass

Any Text WCAG AAA ✓ Pass

If you want to check with other color combinations, try the [Color Contrast Checker](#).

Yxy 49.5311, 0.3785, 0.3735

Background



This preview shows how black text looks on a background with the Yxy color 49.5311, 0.3785, 0.3735.



This preview shows how white text looks on a background with the Yxy color 49.5311, 0.3785, 0.3735.

Color Blindness Simulation

Color vision deficiency is a very complex topic, and I could not describe the different causes any better than Wikipedia does, so if you want to learn more, you should check out their [article about color blindness](#).

Dichromacy



Original Color

49.5311, 0.3785, 0.3735

Protanopia

49.7581, 0.3561, 0.3809

Deuteranopia

49.4390, 0.3807, 0.3720



Tritanopia

49.5479, 0.3456, 0.3140

Trichromacy



Original Color

49.5311, 0.3785, 0.3735

Protanomaly

49.4471, 0.3642, 0.3775

Deuteranomaly

49.2834, 0.3798, 0.3722

Tritanomaly

49.3631, 0.3576, 0.3350

Monochromacy



Original Color

49.5311, 0.3785, 0.3735

Achromatopsia

49.6933, 0.3127, 0.3290

Achromatomaly

49.2270, 0.3353, 0.3454

CSS Examples

Text

The CSS property to change the color of the text to Yxy 49.5311, 0.3785, 0.3735 is called "color". The color property can be set on classes, ids or directly on the HTML element.

This example shows how text in the color `rgb(218, 180, 143)` looks like.

```
.text, #text, p{  
    color:rgb(218, 180, 143)  
}
```

If you want to add a text shadow in that color use the text-shadow property, you can generate a text shadow directly with our [CSS Text Shadow Generator](#).

Here you see how black text with a 4 pixel rgb(218, 180, 143) colored shadow looks like.

```
.shadow{ text-shadow: 4px 4px 2px rgb(218, 180, 143) }
```

Border

The CSS property to change the border of an element to Yxy 49.5311, 0.3785, 0.3735 is called "border". The border property can be set on classes, ids or directly on the HTML element.

This example shows the color as border, it can be applied via the CSS property "border" or "border-color".

```
.border, #border, table{ border:4px solid rgb(218, 180, 143) }
```

If only the border color should be changed use the property `border-color`.

```
.border{ border-color:rgb(218, 180, 143) }
```

If you want to add a box shadow in that color use:

Here you see how a box with a 4 pixel `rgb(218, 180, 143)` colored shadow looks like.

```
.boxshadow{ -moz-box-shadow:4px 4px 4px  
4px rgb(218, 180, 143); -webkit-box-  
shadow:4px 4px 4px 4px rgb(218, 180, 143);  
box-shadow:4px 4px 4px 4px rgb(218, 180,  
143) }
```


Background

The CSS property to change the background color of an element to Yxy 49.5311, 0.3785, 0.3735 is called "background". The background property can be set on classes, ids or directly on the HTML element.

```
.background, #background, body{  
background: rgb(218, 180, 143) }
```

If only the background color should be changed can be used:

```
.background{ background-color: rgb(218,  
180, 143) }
```

This example shows the color as background, it is applied via the CSS property "background".

To optimize and compress your CSS code, you can use our [online CSS compressor and optimizer](#) based on csstidy. If you want to create a linear or radial gradient as background or border, check our [CSS Gradient Generator](#).

Hey! You found this booklet interesting? Support Converting Colors with the new Membership Option!

The pro membership hides all ads, plus gives you double the colors in the color bucket, and more awesome pro features!

[Learn more, Memberships starting at \\$2.50/m!](#)

**Follow me
on Twitter!**

@ConvertingColor