

Converting Colors

$Y_{xy}(49.7224, 0.3296, 0.3279)$

Have a look what the booklet for
Yxy(49.7224, 0.3296, 0.3279)
contains.

Yxy(49.5713, 0.3300, 0.3278)	3
<i>Conversions</i>	4
<i>Details</i>	6
<i>Harmonies</i>	12
<i>Previews</i>	24
<i>Color Blindness Simulation</i>	27
<i>CSS Examples</i>	30

Color

Yxy(49.5713, 0.3300, 0.3278)

Conversions

Conversions Part 1

Format	Color
Hex	CBB6B7
RGB	203, 182, 183
RGB Percent	80%, 71%, 72%
CMY	0.2039, 0.2863, 0.2823
CMYK	0.00, 0.10, 0.10, 0.20
HSL	357°, 17%, 75%
HSV	357°, 10%, 80%
XYZ	49.9040, 49.5713, 51.7489
YIQ	188.3930, 12.1950, 4.7630

Conversions

Conversions Part 2

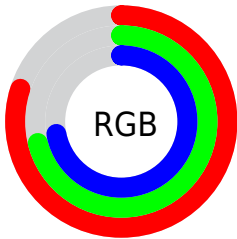
Format	Color
R _Y B	203, 182, 183
Decimal	13350583
CIE Lab	75.81, 7.66, 2.21
CIE LCh	76, 7.968, 16.076
Yxy	49.5713, 0.3300, 0.3278
Android (android.graphics.Color)	4291540663 (0xFFCBB6B7)
YUV	188.3930, -2.6587, 12.8103
Hunter-Lab	70.4069, 3.3077, 5.7068

Details

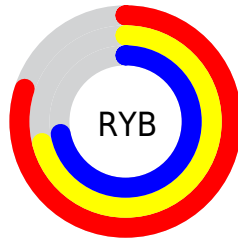
The Yxy color $49.5713, 0.3300, 0.3278$ is a light color, and the websafe version is hex `CCCCCC`. A complement of this color would be $56.9177, 0.2976, 0.3302$, and the grayscale version is $50.5361, 0.3127, 0.3290$.

A 20% lighter version of the original color is $88.6411, 0.3234, 0.3281$, and $23.7018, 0.3353, 0.3274$ is the 20% darker color. If you saturate the color by 10%, you get $41.1025, 0.3509, 0.3266$, and if you desaturate by 10%, it is $59.3601, 0.3132, 0.3290$.

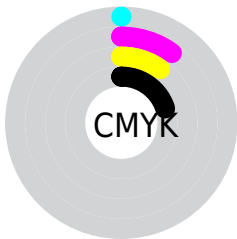
Distribution



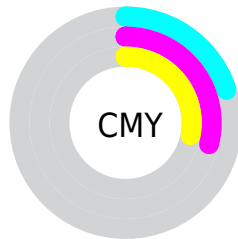
- Red (80%)
- Green (71%)
- Blue (72%)



- Red (80%)
- Yellow (71%)
- Blue (72%)



- Cyan (0%)
- Magenta (10%)
- Yellow (10%)
- Black (20%)





- Cyan (20%)
- Magenta (29%)
- Yellow (28%)

Brightness & Saturation Gradients

These gradients show how the Yxy color 49.5713, 0.3300, 0.3278 changes by changing the brightness by 10 percent. The first figure shows a shift by +10% for each color and the second figure -10%.


Similar to the brightness gradients but the following saturation gradients show a change of the Yxy color 49.5713, 0.3300, 0.3278 by changing the saturation by 10% instead.


 49.5713, 0.3300,
0.3278

 49.5713, 0.3300,
0.3278


384.9871, 0.3214,
0.3285

 35.0729, 0.3321,
0.3276


 89.5394, 0.3269,
0.3280

 23.7190, 0.3348,
0.3274


115.7778, 0.3257,
0.3281

 15.1253, 0.3385,
0.3271


146.6984, 0.3247,
0.3282

 8.9074, 0.3435,
0.3266

182.6855, 0.3239,
0.3283

 4.6808, 0.3509,
0.3259

224.1235, 0.3231,
0.3283

 2.0612, 0.3631,
0.3245

271.3969, 0.3225,

 0.6427, 0.4017,

0.3284

324.8899, 0.3219,
0.3284

0.3236

0.0000, 0.0000,
0.0000

49.5713, 0.3300,
0.3278

49.5713, 0.3300,
0.3278

41.1025, 0.3509,
0.3266

59.3601, 0.3132,
0.3290

33.8910, 0.3770,
0.3253

70.5150, 0.2998,
0.3300

27.8790, 0.4090,
0.3241

83.0881, 0.2889,
0.3310

23.0013, 0.4475,
0.3231

91.4356, 0.2822,
0.3289

19.1867, 0.4915,
0.3226

■ 16.3560, 0.5381,
0.3228

■ 14.4189, 0.5820,
0.3238

■ 13.2685, 0.6160,
0.3258

■ 12.7171, 0.6355,
0.3275

Harmonies

Analogous

The Analogous color harmony consists of three colors that are next to each other on the color wheel.



49.5713, 0.3212, 0.3189



49.5713, 0.3300, 0.3278



49.5713, 0.3341, 0.3372

Triad

The Triadic color harmony groups three colors that are evenly spaced from another and form a triangle on the color wheel.



49.5713, 0.3300, 0.3278



49.5713, 0.3150, 0.3462



49.5713, 0.2934, 0.3132

Complementary

The Complementary color scheme is a pair of colors which are on the opposite of each other on the color wheel.



49.5713, 0.3300, 0.3278



56.9177, 0.2976, 0.3302

Split Complementary

Split-complementary colors differ from the complementary color scheme. The scheme consists of three colors, the original color and two neighbors of the complement color.



49.5713, 0.2918, 0.3202



49.5713, 0.3300, 0.3278



49.5713, 0.3041, 0.3395

Square

The Square scheme is like the rectangle color scheme, but the four colors are evenly spaced on the color wheel.



49.5713, 0.3300, 0.3278



49.5713, 0.3253, 0.3481



49.5713, 0.2957, 0.3299



49.5713, 0.3000, 0.3105

Rectangle

The Rectangle color scheme consists of four colors that form a rectangle on the color wheel.



49.5713, 0.3300, 0.3278



49.5713, 0.3336, 0.3425



49.5713, 0.2957, 0.3299



49.5713, 0.2922, 0.3151

Sweetspot

The Sweet Spot groups the original color and five complimentary colors.



49.5735, 0.3300, 0.3278



94.7558, 0.3174, 0.3287



50.3183, 0.3130, 0.3038



19.9893, 0.3187, 0.3286



0.0000, 0.0000, 0.0000



21.4041, 0.3127, 0.3290

Same Dimension

The Same Dimension uses a secret algorithm to generate beautiful new colors.



49.5735, 0.3300, 0.3278



80.2711, 0.3335, 0.3276



53.5314, 0.3295, 0.3405



11.2223, 0.3283, 0.3279



8.0976, 0.6343, 0.3268



0.4209, 0.6152, 0.3162

Inverse Universe

The Inverse Universe completely reimagines the original color for something new.



49.5735, 0.3300, 0.3278



80.2711, 0.3335, 0.3276



52.6403, 0.2968, 0.3172



11.2223, 0.3283, 0.3279



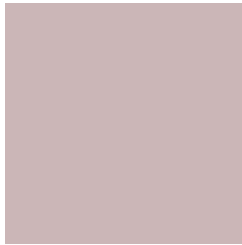
8.0976, 0.6343, 0.3268



0.4209, 0.6152, 0.3162

Previews

White Background



This preview shows how the Yxy color 49.5713, 0.3300, 0.3278 looks on a white background.

Color Contrast Check

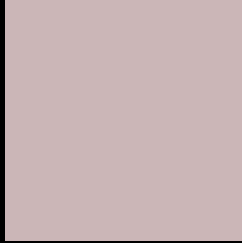
Large Text (above 18pt) WCAG AA × Fail

Any Text WCAG AA × Fail

Large Text (above 18pt) WCAG AAA × Fail

Any Text WCAG AAA × Fail

Black Background



This preview shows how the Yxy color 49.5713, 0.3300, 0.3278 looks on a black background.

Color Contrast Check

Large Text (above 18pt) WCAG AA ✓ Pass

Any Text WCAG AA ✓ Pass

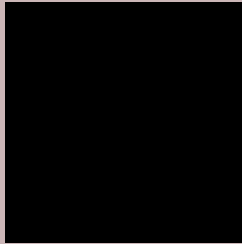
Large Text (above 18pt) WCAG AAA ✓ Pass

Any Text WCAG AAA ✓ Pass

If you want to check with other color combinations, try the [Color Contrast Checker](#).

Yxy 49.5713, 0.3300, 0.3278

Background



This preview shows how black text looks on a background with the Yxy color 49.5713, 0.3300, 0.3278.



This preview shows how white text looks on a background with the Yxy color 49.5713, 0.3300, 0.3278.

Color Blindness Simulation

Color vision deficiency is a very complex topic, and I could not describe the different causes any better than Wikipedia does, so if you want to learn more, you should check out their [article about color blindness](#).

Dichromacy



Original Color

49.5713, 0.3300, 0.3278

Protanopia

49.5677, 0.3168, 0.3303

Deuteranopia

49.5885, 0.3328, 0.3266



Tritanopia

49.5167, 0.3230, 0.3121

Trichromacy



Original Color

49.5713, 0.3300, 0.3278

Protanomaly

49.7607, 0.3220, 0.3303

Deuteranomaly

49.4458, 0.3319, 0.3266

Tritanomaly

49.6028, 0.3253, 0.3181

Monochromacy



Original Color

49.5713, 0.3300, 0.3278

Achromatopsia

50.2886, 0.3127, 0.3290

Achromatomaly

50.0004, 0.3186, 0.3290

CSS Examples

Text

The CSS property to change the color of the text to Yxy 49.5713, 0.3300, 0.3278 is called "color". The color property can be set on classes, ids or directly on the HTML element.

This example shows how text in the color `rgb(203, 182, 183)` looks like.

```
.text, #text, p{  
    color:rgb(203, 182, 183)  
}
```

If you want to add a text shadow in that color use the text-shadow property, you can generate a text shadow directly with our [CSS Text Shadow Generator](#).

Here you see how black text with a 4 pixel rgb(203, 182, 183) colored shadow looks like.

```
.shadow{ text-shadow: 4px 4px 2px rgb(203, 182, 183) }
```

Border

The CSS property to change the border of an element to Yxy 49.5713, 0.3300, 0.3278 is called "border". The border property can be set on classes, ids or directly on the HTML element.

This example shows the color as border, it can be applied via the CSS property "border" or "border-color".

```
.border, #border, table{ border:4px solid rgb(203, 182, 183) }
```

If only the border color should be changed use the property `border-color`.

```
.border{ border-color:rgb(203, 182, 183) }
```

If you want to add a box shadow in that color use:

Here you see how a box with a 4 pixel `rgb(203, 182, 183)` colored shadow looks like.

```
.boxshadow{ -moz-box-shadow:4px 4px 4px  
4px rgb(203, 182, 183); -webkit-box-  
shadow:4px 4px 4px 4px rgb(203, 182, 183);  
box-shadow:4px 4px 4px 4px rgb(203, 182,  
183) }
```


Background

The CSS property to change the background color of an element to Yxy 49.5713, 0.3300, 0.3278 is called "background". The background property can be set on classes, ids or directly on the HTML element.

```
.background, #background, body{  
background: rgb(203, 182, 183) }
```

If only the background color should be changed can be used:

```
.background{ background-color: rgb(203,  
182, 183) }
```

This example shows the color as background, it is applied via the CSS property "background".

To optimize and compress your CSS code, you can use our [online CSS compressor and optimizer](#) based on csstidy. If you want to create a linear or radial gradient as background or border, check our [CSS Gradient Generator](#).

Hey! You found this booklet interesting? Support Converting Colors with the new Membership Option!

The pro membership hides all ads, plus gives you double the colors in the color bucket, and more awesome pro features!

[Learn more, Memberships starting at \\$2.50/m!](#)

**Follow me
on Twitter!**

@ConvertingColor