

Converting Colors

$Yxy(49.7225, 0.3410, 0.3267)$

Have a look what the booklet for
Yxy(49.7225, 0.3410, 0.3267)
contains.

Yxy(49.7225, 0.3410, 0.3267)	3
Conversions	4
Details	6
Harmonies	12
Previews	24
Color Blindness Simulation	27
CSS Examples	30

Color

Yxy(49.7225, 0.3410, 0.3267)

Conversions

Conversions Part 1

Format	Color
Hex	D5B3B5
RGB	213, 179, 181
RGB Percent	84%, 70%, 71%
CMY	0.1647, 0.2980, 0.2902
CMYK	0.00, 0.16, 0.15, 0.16
HSL	356°, 29%, 77%
HSV	356°, 16%, 84%
XYZ	51.8989, 49.7225, 50.5748
YIQ	189.3940, 19.6220, 7.8300

Conversions

Conversions Part 2

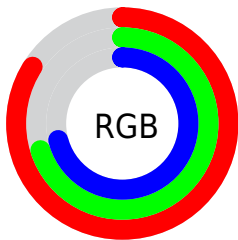
Format	Color
R _Y B	213, 179, 181
Decimal	14005173
CIE Lab	75.90, 12.56, 3.56
CIE LCh	76, 13.053, 15.812
Yxy	49.7225, 0.3410, 0.3267
Android (android.graphics.Color)	4292195253 (0xFFD5B3B5)
YUV	189.3940, -4.1382, 20.7025
Hunter-Lab	70.5142, 7.9774, 6.8354

Details

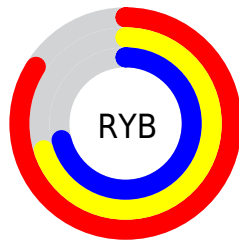
The Yxy color $49.7225, 0.3410, 0.3267$ is a light color, and the websafe version is hex $CC9999$. A complement of this color would be $61.8730, 0.2899, 0.3313$, and the grayscale version is $51.1426, 0.3127, 0.3290$.

A 20% lighter version of the original color is $86.7911, 0.3250, 0.3271$, and $23.7493, 0.3494, 0.3259$ is the 20% darker color. If you saturate the color by 10%, you get $41.0709, 0.3645, 0.3252$, and if you desaturate by 10%, it is $59.8158, 0.3221, 0.3282$.

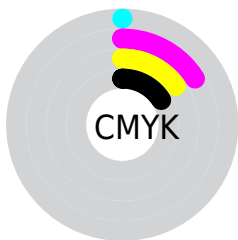
Distribution



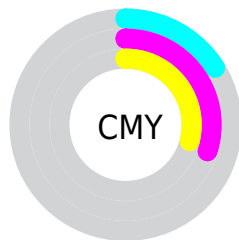
- Red (84%)
- Green (70%)
- Blue (71%)



- Red (84%)
- Yellow (70%)
- Blue (71%)



- Cyan (0%)
- Magenta (16%)
- Yellow (15%)
- Black (16%)



- Cyan (16%)
- Magenta (30%)
- Yellow (29%)

Brightness & Saturation Gradients


These gradients show how the Yxy color 49.7225, 0.3410, 0.3267 changes by changing the brightness by 10 percent. The first figure shows a shift by +10% for each color and the second figure -10%.


Similar to the brightness gradients but the following saturation gradients show a change of the Yxy color 49.7225, 0.3410, 0.3267 by changing the saturation by 10% instead.


 49.7225, 0.3410,
0.3267

 49.7225, 0.3410,
0.3267


385.5798, 0.3269,
0.3280

 35.1930, 0.3445,
0.3264


 89.7636, 0.3359,
0.3272

 23.8115, 0.3490,
0.3259


116.0439, 0.3340,
0.3274

 15.1939, 0.3549,
0.3252


147.0100, 0.3324,
0.3275

 8.9556, 0.3631,
0.3243

183.0461, 0.3310,
0.3276

 4.7122, 0.3753,
0.3227

224.5368, 0.3298,
0.3277

 2.0794, 0.3952,
0.3199

271.8663, 0.3287,

 0.6530, 0.4547,

0.3278

0.3192

325.4192, 0.3278,
0.3279

0.0000, 0.0000,
0.0000

49.7225, 0.3410,
0.3267

49.7225, 0.3410,
0.3267

41.0709, 0.3645,
0.3252

59.8158, 0.3221,
0.3282

33.7888, 0.3937,
0.3236

71.4052, 0.3070,
0.3295

27.8082, 0.4291,
0.3223

84.5506, 0.2948,
0.3308

23.0522, 0.4706,
0.3213

92.8850, 0.2877,
0.3289

19.4362, 0.5165,
0.3211

■ 16.8647, 0.5623,
0.3218

■ 15.2267, 0.6016,
0.3238

■ 14.3846, 0.6279,
0.3265

■ 14.1727, 0.6349,
0.3271

Harmonies

Analogous

The Analogous color harmony consists of three colors that are next to each other on the color wheel.



49.7225, 0.3263, 0.3124



49.7225, 0.3410, 0.3267



49.7225, 0.3479, 0.3419

Triad

The Triadic color harmony groups three colors that are evenly spaced from another and form a triangle on the color wheel.



49.7225, 0.3410, 0.3267



49.7225, 0.3164, 0.3576



49.7225, 0.2812, 0.3031

Complementary

The Complementary color scheme is a pair of colors which are on the opposite of each other on the color wheel.



49.7225, 0.3410, 0.3267



61.8730, 0.2899, 0.3313

Split Complementary

Split-complementary colors differ from the complementary color scheme. The scheme consists of three colors, the original color and two neighbors of the complement color.



49.7225, 0.2788, 0.3145



49.7225, 0.3410, 0.3267



49.7225, 0.2987, 0.3464

Square

The Square scheme is like the rectangle color scheme, but the four colors are evenly spaced on the color wheel.



49.7225, 0.3410, 0.3267



49.7225, 0.3334, 0.3604



49.7225, 0.2851, 0.3304



49.7225, 0.2919, 0.2989

Rectangle

The Rectangle color scheme consists of four colors that form a rectangle on the color wheel.



49.7225, 0.3410, 0.3267



49.7225, 0.3471, 0.3508



49.7225, 0.2851, 0.3304



49.7225, 0.2794, 0.3062

Sweetspot

The Sweet Spot groups the original color and five complimentary colors.



49.7247, 0.3410, 0.3267



91.3840, 0.3206, 0.3283



50.8560, 0.3127, 0.2895



19.3107, 0.3218, 0.3282



0.0000, 0.0000, 0.0000



21.4041, 0.3127, 0.3290

Same Dimension

The Same Dimension uses a secret algorithm to generate beautiful new colors.



49.7247, 0.3410, 0.3267



70.2903, 0.3481, 0.3262



55.8658, 0.3400, 0.3465



12.4325, 0.3282, 0.3277



8.6630, 0.6333, 0.3263



0.5267, 0.6130, 0.3150

Inverse Universe

The Inverse Universe completely reimagines the original color for something new.



49.7247, 0.3410, 0.3267



70.2903, 0.3481, 0.3262



54.8985, 0.2879, 0.3108



12.4325, 0.3282, 0.3277



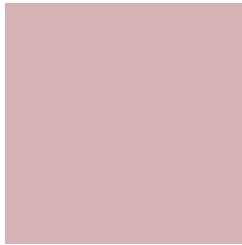
8.6630, 0.6333, 0.3263



0.5267, 0.6130, 0.3150

Previews

White Background



This preview shows how the Yxy color 49.7225, 0.3410, 0.3267 looks on a white background.

Color Contrast Check

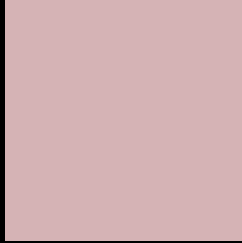
Large Text (above 18pt) WCAG AA × Fail

Any Text WCAG AA × Fail

Large Text (above 18pt) WCAG AAA × Fail

Any Text WCAG AAA × Fail

Black Background



This preview shows how the Yxy color 49.7225, 0.3410, 0.3267 looks on a black background.

Color Contrast Check

Large Text (above 18pt) WCAG AA ✓ Pass

Any Text WCAG AA ✓ Pass

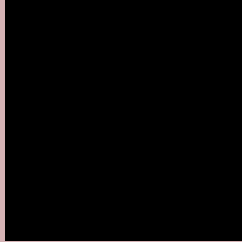
Large Text (above 18pt) WCAG AAA ✓ Pass

Any Text WCAG AAA ✓ Pass

If you want to check with other color combinations, try the [Color Contrast Checker](#).

Yxy 49.7225, 0.3410, 0.3267

Background



This preview shows how black text looks on a background with the Yxy color 49.7225, 0.3410, 0.3267.



This preview shows how white text looks on a background with the Yxy color 49.7225, 0.3410, 0.3267.

Color Blindness Simulation

Color vision deficiency is a very complex topic, and I could not describe the different causes any better than Wikipedia does, so if you want to learn more, you should check out their [article about color blindness](#).

Dichromacy



Original Color

49.7225, 0.3410, 0.3267

Protanopia

49.6970, 0.3177, 0.3303

Deuteranopia

49.7938, 0.3362, 0.3291



Tritanopia

49.5020, 0.3337, 0.3125

Trichromacy



Original Color

49.7225, 0.3410, 0.3267

Protanomaly

49.4698, 0.3256, 0.3278

Deuteranomaly

49.6804, 0.3382, 0.3279

Tritanomaly

49.7248, 0.3369, 0.3184

Monochromacy



Original Color

49.7225, 0.3410, 0.3267

Achromatopsia

50.8881, 0.3127, 0.3290

Achromatomaly

50.2489, 0.3229, 0.3278

CSS Examples

Text

The CSS property to change the color of the text to Yxy 49.7225, 0.3410, 0.3267 is called "color". The color property can be set on classes, ids or directly on the HTML element.

This example shows how text in the color `rgb(213, 179, 181)` looks like.

```
.text, #text, p{  
    color:rgb(213, 179, 181)  
}
```

If you want to add a text shadow in that color use the text-shadow property, you can generate a text shadow directly with our [CSS Text Shadow Generator](#).

Here you see how black text with a 4 pixel rgb(213, 179, 181) colored shadow looks like.

```
.shadow{ text-shadow: 4px 4px 2px rgb(213, 179, 181) }
```

Border

The CSS property to change the border of an element to Yxy 49.7225, 0.3410, 0.3267 is called "border". The border property can be set on classes, ids or directly on the HTML element.

This example shows the color as border, it can be applied via the CSS property "border" or "border-color".

```
.border, #border, table{ border:4px solid rgb(213, 179, 181) }
```

If only the border color should be changed use the property `border-color`.

```
.border{ border-color:rgb(213, 179, 181) }
```

If you want to add a box shadow in that color use:

Here you see how a box with a 4 pixel `rgb(213, 179, 181)` colored shadow looks like.

```
.boxshadow{ -moz-box-shadow:4px 4px 4px  
4px rgb(213, 179, 181); -webkit-box-  
shadow:4px 4px 4px 4px rgb(213, 179, 181);  
box-shadow:4px 4px 4px 4px rgb(213, 179,  
181) }
```


Background

The CSS property to change the background color of an element to Yxy 49.7225, 0.3410, 0.3267 is called "background". The background property can be set on classes, ids or directly on the HTML element.

```
.background, #background, body{  
background: rgb(213, 179, 181) }
```

If only the background color should be changed can be used:

```
.background{ background-color: rgb(213,  
179, 181) }
```

This example shows the color as background, it is applied via the CSS property "background".

To optimize and compress your CSS code, you can use our [online CSS compressor and optimizer](#) based on csstidy. If you want to create a linear or radial gradient as background or border, check our [CSS Gradient Generator](#).

Hey! You found this booklet interesting? Support Converting Colors with the new Membership Option!

The pro membership hides all ads, plus gives you double the colors in the color bucket, and more awesome pro features!

[Learn more, Memberships starting at \\$2.50/m!](#)

**Follow me
on Twitter!**

@ConvertingColor