

Converting Colors

$Y_{xy}(49.7569, 0.3723, 0.3527)$

Have a look what the booklet for
Yxy(49.7569, 0.3723, 0.3527)
contains.

Yxy(49.7259, 0.3727, 0.3527)	3
Conversions	4
Details	6
Harmonies	12
Previews	24
Color Blindness Simulation	27
CSS Examples	30

Color

Yxy(49.7259, 0.3727, 0.3527)

Conversions

Conversions Part 1

Format	Color
Hex	E0B19D
RGB	224, 177, 157
RGB Percent	88%, 69%, 62%
CMY	0.1216, 0.3058, 0.3844
CMYK	0.00, 0.21, 0.30, 0.12
HSL	18°, 52%, 75%
HSV	18°, 30%, 88%
XYZ	52.5456, 49.7259, 38.7149
YIQ	188.7730, 34.4320, 3.7440

Conversions

Conversions Part 2

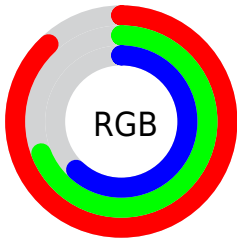
Format	Color
R _Y B	224, 186, 157
Decimal	14725533
CIE Lab	75.90, 14.24, 16.76
CIE LCh	76, 21.993, 49.648
Yxy	49.7259, 0.3727, 0.3527
Android (android.graphics.Color)	4292915613 (0xFFE0B19D)
YUV	188.7730, -15.6641, 30.8941
Hunter-Lab	70.5166, 9.6057, 16.8104

Details

The Yxy color $49.7259, 0.3727, 0.3527$ is a light color, and the websafe version is hex $CC9999$. A complement of this color would be $55.7143, 0.2669, 0.3039$, and the grayscale version is $50.8290, 0.3127, 0.3290$.

A 20% lighter version of the original color is $84.2913, 0.3417, 0.3501$, and $23.7807, 0.3898, 0.3571$ is the 20% darker color. If you saturate the color by 10%, you get $43.1808, 0.4002, 0.3609$, and if you desaturate by 10%, it is $57.1298, 0.3492, 0.3444$.

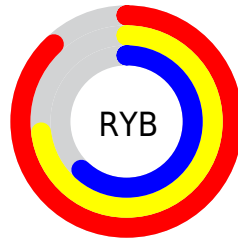
Distribution



Red (88%)

Green (69%)

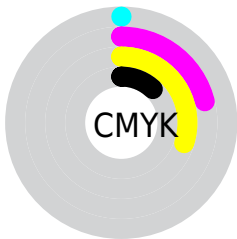
Blue (62%)



Red (88%)

Yellow (73%)

Blue (62%)

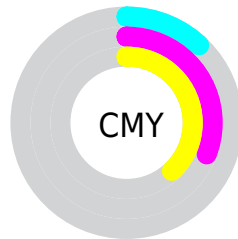


Cyan (0%)

Magenta (21%)

Yellow (30%)

Black (12%)



Cyan (12%)


Magenta (31%)

Yellow (38%)

Brightness & Saturation Gradients


These gradients show how the Yxy color 49.7259, 0.3727, 0.3527 changes by changing the brightness by 10 percent. The first figure shows a shift by +10% for each color and the second figure -10%.


Similar to the brightness gradients but the following saturation gradients show a change of the Yxy color 49.7259, 0.3727, 0.3527 by changing the saturation by 10% instead.


 49.7259, 0.3727,
0.3527

 49.7259, 0.3727,
0.3527


385.5931, 0.3428,
0.3417

 35.1957, 0.3801,
0.3552


 89.7686, 0.3619,
0.3489

 23.8136, 0.3896,
0.3582


 116.0499, 0.3578,
0.3474

 15.1954, 0.4021,
0.3619


147.0170, 0.3543,
0.3461

 8.9567, 0.4192,
0.3665

183.0542, 0.3514,
0.3450

 4.7129, 0.4442,
0.3722

224.5461, 0.3488,
0.3440

 2.0798, 0.4847,
0.3794

271.8769, 0.3465,

 0.6532, 0.5988,

0.3432

0.4012

325.4311, 0.3446,
0.3424

0.0000, 0.0000,
0.0000

49.7259, 0.3727,
0.3527

49.7259, 0.3727,
0.3527

43.1808, 0.4002,
0.3609

57.1298, 0.3492,
0.3444

37.4559, 0.4318,
0.3685

65.4155, 0.3293,
0.3364

32.5194, 0.4670,
0.3745

74.6139, 0.3126,
0.3289

28.3352, 0.5041,
0.3779

84.7523, 0.2985,
0.3220

24.8636, 0.5407,
0.3773

94.5867, 0.2940,
0.3289

■ 22.0610, 0.5729,
0.3721

■ 19.8714, 0.5983,
0.3630

■ 19.8563, 0.5985,
0.3630

Harmonies

Analogous

The Analogous color harmony consists of three colors that are next to each other on the color wheel.



49.7259, 0.3630, 0.3278



49.7259, 0.3727, 0.3527



49.7259, 0.3654, 0.3731

Triad

The Triadic color harmony groups three colors that are evenly spaced from another and form a triangle on the color wheel.



49.7259, 0.3727, 0.3527



49.7259, 0.2855, 0.3556



49.7259, 0.2807, 0.2794

Complementary

The Complementary color scheme is a pair of colors which are on the opposite of each other on the color wheel.



49.7259, 0.3727, 0.3527



55.7143, 0.2669, 0.3039

Split Complementary

Split-complementary colors differ from the complementary color scheme. The scheme consists of three colors, the original color and two neighbors of the complement color.



49.7259, 0.2620, 0.2840



49.7259, 0.3727, 0.3527



49.7259, 0.2646, 0.3271

Square

The Square scheme is like the rectangle color scheme, but the four colors are evenly spaced on the color wheel.



49.7259, 0.3727, 0.3527



49.7259, 0.3144, 0.3765



49.7259, 0.2562, 0.3009



49.7259, 0.3088, 0.2869

Rectangle

The Rectangle color scheme consists of four colors that form a rectangle on the color wheel.



49.7259, 0.3727, 0.3527



49.7259, 0.3522, 0.3810



49.7259, 0.2562, 0.3009



49.7259, 0.2732, 0.2796

Sweetspot

The Sweet Spot groups the original color and five complimentary colors.



49.7282, 0.3727, 0.3527



88.7697, 0.3278, 0.3358



44.3601, 0.3329, 0.2744



18.6322, 0.3304, 0.3369



0.0000, 0.0000, 0.0000



21.4041, 0.3127, 0.3290

Same Dimension

The Same Dimension uses a secret algorithm to generate beautiful new colors.



49.7282, 0.3727, 0.3527



61.0173, 0.3897, 0.3580



64.1144, 0.3621, 0.3886



14.3651, 0.3285, 0.3361



11.7340, 0.5958, 0.3651



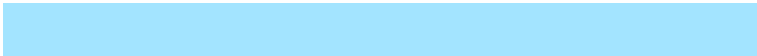
0.9666, 0.5654, 0.3893

Inverse Universe

The Inverse Universe completely reimagines the original color for something new.



55.7143, 0.2669, 0.3039



70.2714, 0.2576, 0.2977



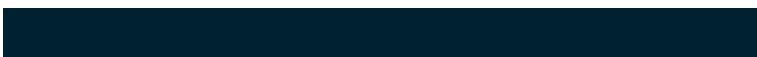
41.8607, 0.2621, 0.2612



14.8443, 0.2982, 0.3218



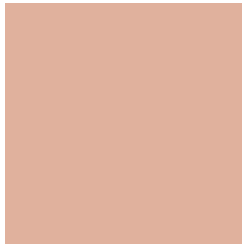
17.3861, 0.1969, 0.2289



1.3593, 0.2017, 0.2462

Previews

White Background



This preview shows how the Yxy color 49.7259, 0.3727, 0.3527 looks on a white background.

Color Contrast Check

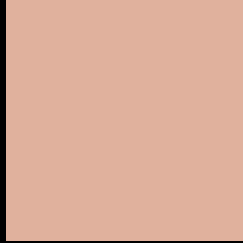
Large Text (above 18pt) WCAG AA × Fail

Any Text WCAG AA × Fail

Large Text (above 18pt) WCAG AAA × Fail

Any Text WCAG AAA × Fail

Black Background



This preview shows how the Yxy color 49.7259, 0.3727, 0.3527 looks on a black background.

Color Contrast Check

Large Text (above 18pt) WCAG AA ✓ Pass

Any Text WCAG AA ✓ Pass

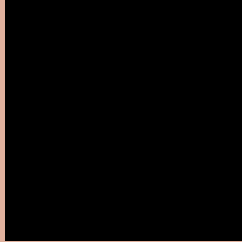
Large Text (above 18pt) WCAG AAA ✓ Pass

Any Text WCAG AAA ✓ Pass

If you want to check with other color combinations, try the [Color Contrast Checker](#).

Yxy 49.7259, 0.3727, 0.3527

Background



This preview shows how black text looks on a background with the Yxy color 49.7259, 0.3727, 0.3527.



This preview shows how white text looks on a background with the Yxy color 49.7259, 0.3727, 0.3527.

Color Blindness Simulation

Color vision deficiency is a very complex topic, and I could not describe the different causes any better than Wikipedia does, so if you want to learn more, you should check out their [article about color blindness](#).

Dichromacy



Original Color

49.7259, 0.3727, 0.3527

Protanopia

50.0196, 0.3412, 0.3607

Deuteranopia

49.6417, 0.3652, 0.3580



Tritanopia

49.7632, 0.3503, 0.3142

Trichromacy



Original Color

49.7259, 0.3727, 0.3527

Protanomaly

49.6704, 0.3527, 0.3575

Deuteranomaly

49.7006, 0.3683, 0.3566

Tritanomaly

49.5360, 0.3591, 0.3280

Monochromacy



Original Color

49.7259, 0.3727, 0.3527

Achromatopsia

50.8881, 0.3127, 0.3290

Achromatomaly

50.4288, 0.3337, 0.3389

CSS Examples

Text

The CSS property to change the color of the text to Yxy 49.7259, 0.3727, 0.3527 is called "color". The color property can be set on classes, ids or directly on the HTML element.

This example shows how text in the color `rgb(224, 177, 157)` looks like.

```
.text, #text, p{  
    color:rgb(224, 177, 157)  
}
```

If you want to add a text shadow in that color use the text-shadow property, you can generate a text shadow directly with our [CSS Text Shadow Generator](#).

Here you see how black text with a 4 pixel rgb(224, 177, 157) colored shadow looks like.

```
.shadow{ text-shadow: 4px 4px 2px rgb(224, 177, 157) }
```

Border

The CSS property to change the border of an element to Yxy 49.7259, 0.3727, 0.3527 is called "border". The border property can be set on classes, ids or directly on the HTML element.

This example shows the color as border, it can be applied via the CSS property "border" or "border-color".

```
.border, #border, table{ border:4px solid rgb(224, 177, 157) }
```

If only the border color should be changed use the property `border-color`.

```
.border{ border-color:rgb(224, 177, 157) }
```

If you want to add a box shadow in that color use:

Here you see how a box with a 4 pixel `rgb(224, 177, 157)` colored shadow looks like.

```
.boxshadow{ -moz-box-shadow:4px 4px 4px  
4px rgb(224, 177, 157); -webkit-box-  
shadow:4px 4px 4px 4px rgb(224, 177, 157);  
box-shadow:4px 4px 4px 4px rgb(224, 177,  
157) }
```


Background

The CSS property to change the background color of an element to Yxy 49.7259, 0.3727, 0.3527 is called "background". The background property can be set on classes, ids or directly on the HTML element.

```
.background, #background, body{  
background: rgb(224, 177, 157) }
```

If only the background color should be changed can be used:

```
.background{ background-color: rgb(224,  
177, 157) }
```

This example shows the color as background, it is applied via the CSS property "background".

To optimize and compress your CSS code, you can use our [online CSS compressor and optimizer](#) based on csstidy. If you want to create a linear or radial gradient as background or border, check our [CSS Gradient Generator](#).

Hey! You found this booklet interesting? Support Converting Colors with the new Membership Option!

The pro membership hides all ads, plus gives you double the colors in the color bucket, and more awesome pro features!

[Learn more, Memberships starting at \\$2.50/m!](#)

**Follow me
on Twitter!**

@ConvertingColor