

Converting Colors

$Yxy(49.7619, 0.3465, 0.3455)$

Have a look what the booklet for
Yxy(49.7619, 0.3465, 0.3455)
contains.

Yxy(49.7304, 0.3462, 0.3450)	3
Conversions	4
Details	6
Harmonies	12
Previews	24
Color Blindness Simulation	27
CSS Examples	30

Color

Yxy(49.7304, 0.3462, 0.3450)

Conversions

Conversions Part 1

Format	Color
Hex	D0B6A9
RGB	208, 182, 169
RGB Percent	82%, 71%, 66%
CMY	0.1843, 0.2863, 0.3372
CMYK	0.00, 0.12, 0.19, 0.18
HSL	20°, 29%, 74%
HSV	20°, 19%, 82%
XYZ	49.9034, 49.7304, 44.5123
YIQ	188.2920, 19.6690, 1.4690

Conversions

Conversions Part 2

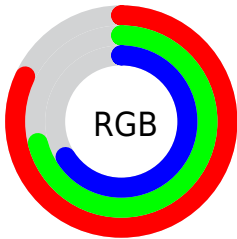
Format	Color
R _Y B	208, 189, 169
Decimal	13678249
CIE Lab	75.90, 7.23, 10.02
CIE LCh	76, 12.356, 54.180
Yxy	49.7304, 0.3462, 0.3450
Android (android.graphics.Color)	4291868329 (0xFFD0B6A9)
YUV	188.2920, -9.5110, 17.2839
Hunter-Lab	70.5198, 2.9060, 11.9398

Details

The Yxy color $49.7304, 0.3462, 0.3450$ is a light color, and the websafe version is hex `CCCCCC`. A complement of this color would be $52.0284, 0.2839, 0.3124$, and the grayscale version is $50.5126, 0.3127, 0.3290$.

A 20% lighter version of the original color is $87.7909, 0.3330, 0.3429$, and $23.7572, 0.3554, 0.3489$ is the 20% darker color. If you saturate the color by 10%, you get $43.6091, 0.3687, 0.3541$, and if you desaturate by 10%, it is $56.5433, 0.3270, 0.3362$.

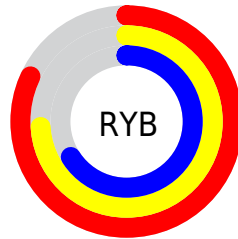
Distribution



Red (82%)

Green (71%)

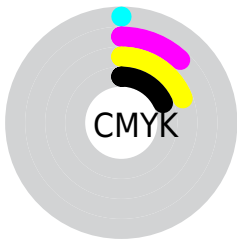
Blue (66%)



Red (82%)

Yellow (74%)

Blue (66%)

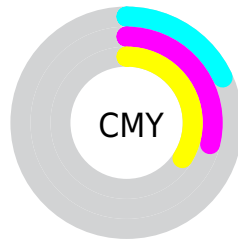


Cyan (0%)

Magenta (12%)

Yellow (19%)

Black (18%)



Cyan (18%)

Magenta (29%)

Yellow (34%)

Brightness & Saturation Gradients


These gradients show how the Yxy color 49.7304, 0.3462, 0.3450 changes by changing the brightness by 10 percent. The first figure shows a shift by +10% for each color and the second figure -10%.


Similar to the brightness gradients but the following saturation gradients show a change of the Yxy color 49.7304, 0.3462, 0.3450 by changing the saturation by 10% instead.


 49.7304, 0.3462,
0.3450

 49.7304, 0.3462,
0.3450


385.6107, 0.3295,
0.3373

 35.1992, 0.3503,
0.3468


 89.7753, 0.3402,
0.3423

 23.8164, 0.3556,
0.3491


116.0578, 0.3379,
0.3412

 15.1975, 0.3626,
0.3521


147.0262, 0.3360,
0.3403

 8.9581, 0.3724,
0.3561

183.0650, 0.3343,
0.3396

 4.7139, 0.3867,
0.3617

224.5584, 0.3329,
0.3389

 2.0804, 0.4099,
0.3698

271.8909, 0.3316,

 0.6536, 0.5455,

0.3383

0.4469

325.4468, 0.3305,
0.3378

0.0000, 0.0000,
0.0000

49.7304, 0.3462,
0.3450

49.7304, 0.3462,
0.3450

43.6091, 0.3687,
0.3541

56.5433, 0.3270,
0.3362

38.1506, 0.3949,
0.3633

64.0622, 0.3108,
0.3280

33.3337, 0.4248,
0.3718

72.3094, 0.2971,
0.3204

29.1335, 0.4580,
0.3790

81.3044, 0.2854,
0.3134

25.5234, 0.4933,
0.3835

89.8502, 0.2847,
0.3252

■ 22.4747, 0.5284,
0.3842

■ 92.1503, 0.2849,
0.3289

■ 19.9555, 0.5602,
0.3801

■ 17.9264, 0.5861,
0.3715

■ 17.7020, 0.5892,
0.3704

Harmonies

Analogous

The Analogous color harmony consists of three colors that are next to each other on the color wheel.



49.7304, 0.3422, 0.3309



49.7304, 0.3462, 0.3450



49.7304, 0.3410, 0.3554

Triad

The Triadic color harmony groups three colors that are evenly spaced from another and form a triangle on the color wheel.



49.7304, 0.3462, 0.3450



49.7304, 0.2953, 0.3415



49.7304, 0.2969, 0.3007

Complementary

The Complementary color scheme is a pair of colors which are on the opposite of each other on the color wheel.



49.7304, 0.3462, 0.3450



52.0284, 0.2839, 0.3124

Split Complementary

Split-complementary colors differ from the complementary color scheme. The scheme consists of three colors, the original color and two neighbors of the complement color.



49.7304, 0.2850, 0.3027



49.7304, 0.3462, 0.3450



49.7304, 0.2841, 0.3259

Square

The Square scheme is like the rectangle color scheme, but the four colors are evenly spaced on the color wheel.



49.7304, 0.3462, 0.3450



49.7304, 0.3114, 0.3538



49.7304, 0.2803, 0.3117



49.7304, 0.3134, 0.3059

Rectangle

The Rectangle color scheme consists of four colors that form a rectangle on the color wheel.



49.7304, 0.3462, 0.3450



49.7304, 0.3330, 0.3586



49.7304, 0.2803, 0.3117



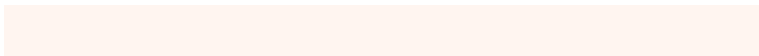
49.7304, 0.2923, 0.3005

Sweetspot

The Sweet Spot groups the original color and five complimentary colors.



49.7326, 0.3462, 0.3450



92.7152, 0.3224, 0.3340



45.7623, 0.3253, 0.2970



19.6806, 0.3236, 0.3345



0.0000, 0.0000, 0.0000



21.4041, 0.3127, 0.3290

Same Dimension

The Same Dimension uses a secret algorithm to generate beautiful new colors.



49.7326, 0.3462, 0.3450



75.3079, 0.3537, 0.3482



57.9812, 0.3422, 0.3672



12.4425, 0.3282, 0.3368



11.1922, 0.5866, 0.3724



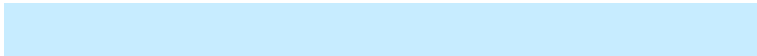
0.7705, 0.5506, 0.4010

Inverse Universe

The Inverse Universe completely reimagines the original color for something new.



52.0284, 0.2839, 0.3124



79.5195, 0.2784, 0.3090



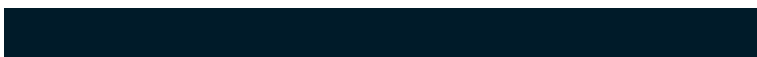
44.1061, 0.2825, 0.2877



12.7158, 0.2983, 0.3211



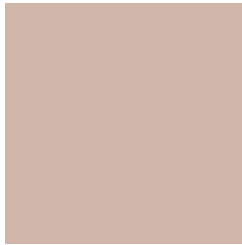
14.4793, 0.1936, 0.2171



0.9522, 0.2000, 0.2400

Previews

White Background



This preview shows how the Yxy color 49.7304, 0.3462, 0.3450 looks on a white background.

Color Contrast Check

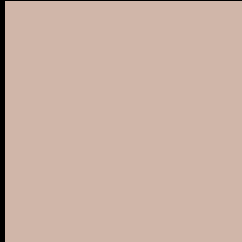
Large Text (above 18pt) WCAG AA × Fail

Any Text WCAG AA × Fail

Large Text (above 18pt) WCAG AAA × Fail

Any Text WCAG AAA × Fail

Black Background



This preview shows how the Yxy color 49.7304, 0.3462, 0.3450 looks on a black background.

Color Contrast Check

Large Text (above 18pt) WCAG AA ✓ Pass

Any Text WCAG AA ✓ Pass

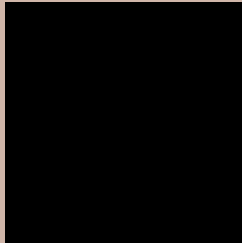
Large Text (above 18pt) WCAG AAA ✓ Pass

Any Text WCAG AAA ✓ Pass

If you want to check with other color combinations, try the [Color Contrast Checker](#).

Yxy 49.7304, 0.3462, 0.3450

Background



This preview shows how black text looks on a background with the Yxy color 49.7304, 0.3462, 0.3450.



This preview shows how white text looks on a background with the Yxy color 49.7304, 0.3462, 0.3450.

Color Blindness Simulation

Color vision deficiency is a very complex topic, and I could not describe the different causes any better than Wikipedia does, so if you want to learn more, you should check out their [article about color blindness](#).

Dichromacy



Original Color

49.7304, 0.3462, 0.3450

Protanopia

49.9503, 0.3313, 0.3493

Deuteranopia

49.9094, 0.3500, 0.3436



Tritanopia

49.8949, 0.3299, 0.3136

Trichromacy



Original Color

49.7304, 0.3462, 0.3450

Protanomaly

49.7423, 0.3368, 0.3479

Deuteranomaly

49.7612, 0.3491, 0.3437

Tritanomaly

49.8048, 0.3356, 0.3243

Monochromacy



Original Color

49.7304, 0.3462, 0.3450

Achromatopsia

50.2886, 0.3127, 0.3290

Achromatomaly

50.0561, 0.3242, 0.3353

CSS Examples

Text

The CSS property to change the color of the text to Yxy 49.7304, 0.3462, 0.3450 is called "color". The color property can be set on classes, ids or directly on the HTML element.

This example shows how text in the color `rgb(208, 182, 169)` looks like.

```
.text, #text, p{  
    color:rgb(208, 182, 169)  
}
```

If you want to add a text shadow in that color use the text-shadow property, you can generate a text shadow directly with our [CSS Text Shadow Generator](#).

Here you see how black text with a 4 pixel rgb(208, 182, 169) colored shadow looks like.

```
.shadow{ text-shadow: 4px 4px 2px rgb(208, 182, 169) }
```

Border

The CSS property to change the border of an element to Yxy 49.7304, 0.3462, 0.3450 is called "border". The border property can be set on classes, ids or directly on the HTML element.

This example shows the color as border, it can be applied via the CSS property "border" or "border-color".

```
.border, #border, table{ border:4px solid rgb(208, 182, 169) }
```

If only the border color should be changed use the property border-color.

```
.border{ border-color:rgb(208, 182, 169) }
```

If you want to add a box shadow in that color use:

Here you see how a box with a 4 pixel rgb(208, 182, 169) colored shadow looks like.

```
.boxshadow{ -moz-box-shadow:4px 4px 4px  
4px rgb(208, 182, 169); -webkit-box-  
shadow:4px 4px 4px 4px rgb(208, 182, 169);  
box-shadow:4px 4px 4px 4px rgb(208, 182,  
169) }
```


Background

The CSS property to change the background color of an element to Yxy 49.7304, 0.3462, 0.3450 is called "background". The background property can be set on classes, ids or directly on the HTML element.

```
.background, #background, body{  
background: rgb(208, 182, 169) }
```

If only the background color should be changed can be used:

```
.background{ background-color: rgb(208,  
182, 169) }
```

This example shows the color as background, it is applied via the CSS property "background".

To optimize and compress your CSS code, you can use our [online CSS compressor and optimizer](#) based on csstidy. If you want to create a linear or radial gradient as background or border, check our [CSS Gradient Generator](#).

Hey! You found this booklet interesting? Support Converting Colors with the new Membership Option!

The pro membership hides all ads, plus gives you double the colors in the color bucket, and more awesome pro features!

[Learn more, Memberships starting at \\$2.50/m!](#)

**Follow me
on Twitter!**

@ConvertingColor