

Converting Colors

$Y_{xy}(49.8425, 0.3219, 0.3235)$

Have a look what the booklet for
Yxy(49.8425, 0.3219, 0.3235)
contains.

Yxy(50.0539, 0.3223, 0.3241)	3
<i>Conversions</i>	4
<i>Details</i>	6
<i>Harmonies</i>	12
<i>Previews</i>	24
<i>Color Blindness Simulation</i>	27
<i>CSS Examples</i>	30

Color

Yxy(50.0539, 0.3223, 0.3241)

Conversions

Conversions Part 1

Format	Color
Hex	C7B8BC
RGB	199, 184, 188
RGB Percent	78%, 72%, 74%
CMY	0.2195, 0.2784, 0.2628
CMYK	0.00, 0.08, 0.06, 0.22
HSL	344°, 12%, 75%
HSV	344°, 8%, 78%
XYZ	49.7759, 50.0539, 54.6099
YIQ	188.9410, 7.6560, 4.4240

Conversions

Conversions Part 2

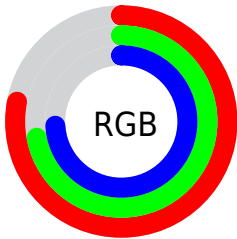
Format	Color
R _Y B	199, 184, 188
Decimal	13088956
CIE Lab	76.10, 6.03, -0.11
CIE LCh	76, 6.032, 358.989
Yxy	50.0539, 0.3223, 0.3241
Android (android.graphics.Color)	4291279036 (0xFFC7B8BC)
YUV	188.9410, -0.4639, 8.8217
Hunter-Lab	70.7488, 1.7748, 3.7591

Details

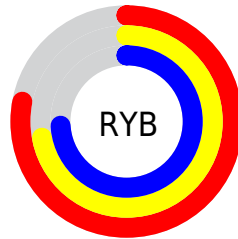
The Yxy color **50.0539, 0.3223, 0.3241** is a light color, and the websafe version is hex **CCCCCC**. A complement of this color would be **54.9926, 0.3039, 0.3340**, and the grayscale version is **50.8556, 0.3127, 0.3290**.

A 20% lighter version of the original color is **90.1118, 0.3202, 0.3251**, and **24.0016, 0.3246, 0.3224** is the 20% darker color. If you saturate the color by 10%, you get **41.7623, 0.3375, 0.3172**, and if you desaturate by 10%, it is **59.5770, 0.3099, 0.3305**.

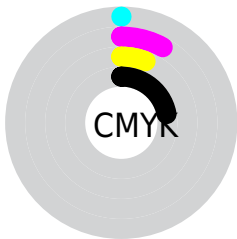
Distribution



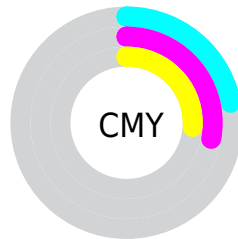
- Red (78%)
- Green (72%)
- Blue (74%)



- Red (78%)
- Yellow (72%)
- Blue (74%)



- Cyan (0%)
- Magenta (8%)
- Yellow (6%)
- Black (22%)





- Cyan (22%)
- Magenta (28%)
- Yellow (26%)

Brightness & Saturation Gradients

These gradients show how the Yxy color 50.0539, 0.3223, 0.3241 changes by changing the brightness by 10 percent. The first figure shows a shift by +10% for each color and the second figure -10%.

Similar to the brightness gradients but the following saturation gradients show a change of the Yxy color 50.0539, 0.3223, 0.3241 by changing the saturation by 10% instead.


 50.0539, 0.3223,
0.3241

 50.0539, 0.3223,
0.3241


386.8767, 0.3176,
0.3265

 35.4562, 0.3235,
0.3235


 90.2547, 0.3206,
0.3250

 24.0145, 0.3250,
0.3227


116.6267, 0.3199,
0.3253

 15.3444, 0.3269,
0.3217


147.6922, 0.3194,
0.3256

 9.0614, 0.3297,
0.3203

183.8356, 0.3189,
0.3258

 4.7813, 0.3337,
0.3183

225.4414, 0.3185,
0.3260

 2.1195, 0.3402,
0.3149

272.8939, 0.3182,

 0.6756, 0.3575,

0.3262

0.3060

326.5775, 0.3178,
0.3264

0.0000, 0.0000,
0.0000

50.0539, 0.3223,
0.3241

50.0539, 0.3223,
0.3241

41.7623, 0.3375,
0.3172

59.5770, 0.3099,
0.3305

34.6455, 0.3562,
0.3101

70.3723, 0.2998,
0.3365

28.6519, 0.3790,
0.3029

82.4869, 0.2916,
0.3419

23.7238, 0.4064,
0.2962

90.3474, 0.2844,
0.3379

19.7980, 0.4384,
0.2907

90.8864, 0.2800,
0.3289

■ 16.8049, 0.4745,
0.2874

■ 14.6655, 0.5127,
0.2875

■ 13.2880, 0.5498,
0.2917

■ 12.5423, 0.5820,
0.2999

Harmonies

Analogous

The Analogous color harmony consists of three colors that are next to each other on the color wheel.



50.0539, 0.3145, 0.3183



50.0539, 0.3223, 0.3241



50.0539, 0.3276, 0.3313

Triad

The Triadic color harmony groups three colors that are evenly spaced from another and form a triangle on the color wheel.



50.0539, 0.3223, 0.3241



50.0539, 0.3191, 0.3432



50.0539, 0.2969, 0.3198

Complementary

The Complementary color scheme is a pair of colors which are on the opposite of each other on the color wheel.



50.0539, 0.3223, 0.3241



54.9926, 0.3039, 0.3340

Split Complementary

Split-complementary colors differ from the complementary color scheme. The scheme consists of three colors, the original color and two neighbors of the complement color.



50.0539, 0.2981, 0.3265



50.0539, 0.3223, 0.3241



50.0539, 0.3108, 0.3401

Square

The Square scheme is like the rectangle color scheme, but the four colors are evenly spaced on the color wheel.



50.0539, 0.3223, 0.3241



50.0539, 0.3257, 0.3424



50.0539, 0.3032, 0.3340



50.0539, 0.2998, 0.3157

Rectangle

The Rectangle color scheme consists of four colors that form a rectangle on the color wheel.



50.0539, 0.3223, 0.3241



50.0539, 0.3289, 0.3359



50.0539, 0.3032, 0.3340



50.0539, 0.2968, 0.3218

Sweetspot

The Sweet Spot groups the original color and five complimentary colors.



50.0561, 0.3223, 0.3241



96.5503, 0.3151, 0.3277



50.0092, 0.3102, 0.3105



20.7019, 0.3150, 0.3278



0.0000, 0.0000, 0.0000



21.4041, 0.3127, 0.3290

Same Dimension

The Same Dimension uses a secret algorithm to generate beautiful new colors.



50.0561, 0.3223, 0.3241



85.1833, 0.3245, 0.3230



51.3617, 0.3251, 0.3334



10.6825, 0.3249, 0.3229



7.9849, 0.5857, 0.3000



0.3905, 0.5243, 0.2662

Inverse Universe

The Inverse Universe completely reimagines the original color for something new.



50.0561, 0.3223, 0.3241



85.1833, 0.3245, 0.3230



53.5797, 0.3012, 0.3246



10.6825, 0.3249, 0.3229



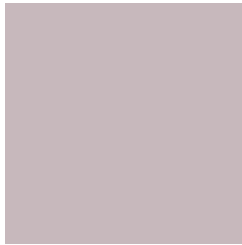
7.9849, 0.5857, 0.3000



0.3905, 0.5243, 0.2662

Previews

White Background



This preview shows how the Yxy color 50.0539, 0.3223, 0.3241 looks on a white background.

Color Contrast Check

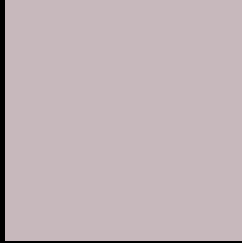
Large Text (above 18pt) WCAG AA × Fail

Any Text WCAG AA × Fail

Large Text (above 18pt) WCAG AAA × Fail

Any Text WCAG AAA × Fail

Black Background



This preview shows how the Yxy color 50.0539, 0.3223, 0.3241 looks on a black background.

Color Contrast Check

Large Text (above 18pt) WCAG AA ✓ Pass

Any Text WCAG AA ✓ Pass

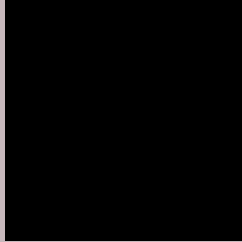
Large Text (above 18pt) WCAG AAA ✓ Pass

Any Text WCAG AAA ✓ Pass

If you want to check with other color combinations, try the [Color Contrast Checker](#).

Yxy 50.0539, 0.3223, 0.3241

Background



This preview shows how black text looks on a background with the Yxy color 50.0539, 0.3223, 0.3241.



This preview shows how white text looks on a background with the Yxy color 50.0539, 0.3223, 0.3241.

Color Blindness Simulation

Color vision deficiency is a very complex topic, and I could not describe the different causes any better than Wikipedia does, so if you want to learn more, you should check out their [article about color blindness](#).

Dichromacy



Original Color

50.0539, 0.3223, 0.3241

Protanopia

50.2055, 0.3129, 0.3252

Deuteranopia

50.0659, 0.3276, 0.3218



Tritanopia

50.1776, 0.3160, 0.3120

Trichromacy



Original Color

50.0539, 0.3223, 0.3241

Protanomaly

50.1294, 0.3162, 0.3253

Deuteranomaly

50.1943, 0.3258, 0.3229

Tritanomaly

50.0414, 0.3184, 0.3156

Monochromacy



Original Color

50.0539, 0.3223, 0.3241

Achromatopsia

50.8881, 0.3127, 0.3290

Achromatomaly

50.5522, 0.3162, 0.3265

CSS Examples

Text

The CSS property to change the color of the text to Yxy 50.0539, 0.3223, 0.3241 is called "color". The color property can be set on classes, ids or directly on the HTML element.

This example shows how text in the color `rgb(199, 184, 188)` looks like.

```
.text, #text, p{  
    color:rgb(199, 184, 188)  
}
```

If you want to add a text shadow in that color use the text-shadow property, you can generate a text shadow directly with our [CSS Text Shadow Generator](#).

Here you see how black text with a 4 pixel rgb(199, 184, 188) colored shadow looks like.

```
.shadow{ text-shadow: 4px 4px 2px rgb(199, 184, 188) }
```

Border

The CSS property to change the border of an element to Yxy 50.0539, 0.3223, 0.3241 is called "border". The border property can be set on classes, ids or directly on the HTML element.

This example shows the color as border, it can be applied via the CSS property "border" or "border-color".

```
.border, #border, table{ border:4px solid rgb(199, 184, 188) }
```

If only the border color should be changed use the property `border-color`.

```
.border{ border-color:rgb(199, 184, 188) }
```

If you want to add a box shadow in that color use:

Here you see how a box with a 4 pixel `rgb(199, 184, 188)` colored shadow looks like.

```
.boxshadow{ -moz-box-shadow:4px 4px 4px 4px rgb(199, 184, 188); -webkit-box-shadow:4px 4px 4px 4px rgb(199, 184, 188); box-shadow:4px 4px 4px 4px rgb(199, 184, 188) }
```


Background

The CSS property to change the background color of an element to Yxy 50.0539, 0.3223, 0.3241 is called "background". The background property can be set on classes, ids or directly on the HTML element.

```
.background, #background, body{  
background: rgb(199, 184, 188) }
```

If only the background color should be changed can be used:

```
.background{ background-color: rgb(199,  
184, 188) }
```

This example shows the color as background, it is applied via the CSS property "background".

To optimize and compress your CSS code, you can use our [online CSS compressor and optimizer](#) based on csstidy. If you want to create a linear or radial gradient as background or border, check our [CSS Gradient Generator](#).

Hey! You found this booklet interesting? Support Converting Colors with the new Membership Option!

The pro membership hides all ads, plus gives you double the colors in the color bucket, and more awesome pro features!

[Learn more, Memberships starting at \\$2.50/m!](#)

**Follow me
on Twitter!**

@ConvertingColor