

# Converting Colors

$Yxy(49.8872, 0.3360, 0.3151)$

Have a look what the booklet for  
Yxy(49.8872, 0.3360, 0.3151)  
contains.

|  |    |
|--|----|
| <b>Yxy(49.9620, 0.3361, 0.3161)</b> .....      | 3  |
| <b><i>Conversions</i></b> .....                | 4  |
| <b><i>Details</i></b> .....                    | 6  |
| <b><i>Harmonies</i></b> .....                  | 12 |
| <b><i>Previews</i></b> .....                   | 24 |
| <b><i>Color Blindness Simulation</i></b> ..... | 27 |
| <b><i>CSS Examples</i></b> .....               | 30 |

# Color

**Yxy(49.9620, 0.3361, 0.3161)**

# Conversions

## Conversions Part 1

| Format      | Color                      |
|-------------|----------------------------|
| Hex         | D7B2BD                     |
| RGB         | 215, 178, 189              |
| RGB Percent | 84%, 70%, 74%              |
| CMY         | 0.1569, 0.3019, 0.2589     |
| CMYK        | 0.00, 0.17, 0.12, 0.16     |
| HSL         | 342°, 32%, 77%             |
| HSV         | 342°, 17%, 84%             |
| XYZ         | 53.1232, 49.9620, 54.9724  |
| YIQ         | 190.3170, 18.5210, 11.2650 |

# Conversions

## Conversions Part 2

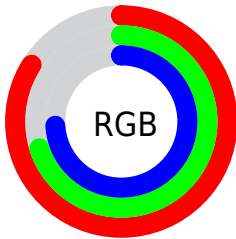
| <b>Format</b>                       | <b>Color</b>                  |
|-------------------------------------|-------------------------------|
| R <sub>YB</sub>                     | 215, 178, 189                 |
| Decimal                             | 14135997                      |
| CIE Lab                             | 76.05, 15.11, -0.55           |
| CIE LCh                             | 76, 15.123, 357.898           |
| Yxy                                 | 49.9620, 0.3361,<br>0.3161    |
| Android<br>(android.graphics.Color) | 4292326077<br>(0xFFD7B2BD)    |
| YUV                                 | 190.3170, -0.6493,<br>21.6470 |
| Hunter-Lab                          | 70.6838, 10.4569,<br>3.3675   |

# Details

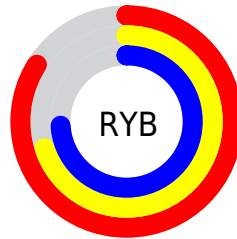
The Yxy color **49.9620, 0.3361, 0.3161** is a light color, and the websafe version is hex **CC9999**. A complement of this color would be **62.4183, 0.2937, 0.3423**, and the grayscale version is **51.6801, 0.3127, 0.3290**.

A 20% lighter version of the original color is **86.6982, 0.3199, 0.3183**, and **23.9184, 0.3425, 0.3118** is the 20% darker color. If you saturate the color by 10%, you get **41.4453, 0.3540, 0.3081**, and if you desaturate by 10%, it is **59.8923, 0.3215, 0.3238**.

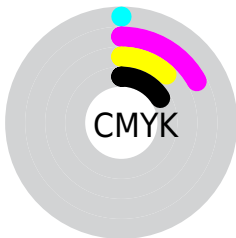
# Distribution



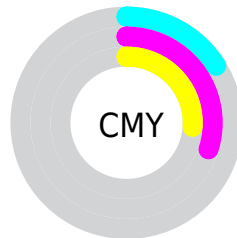
- Red (84%)
- Green (70%)
- Blue (74%)



- Red (84%)
- Yellow (70%)
- Blue (74%)



- Cyan (0%)
- Magenta (17%)
- Yellow (12%)
- Black (16%)




- Cyan (16%)
- Magenta (30%)
- Yellow (26%)


# Brightness & Saturation Gradients

These gradients show how the Yxy color 49.9620, 0.3361, 0.3161 changes by changing the brightness by 10 percent. The first figure shows a shift by +10% for each color and the second figure -10%.


Similar to the brightness gradients but the following saturation gradients show a change of the Yxy color 49.9620, 0.3361, 0.3161 by changing the saturation by 10% instead.





 49.9620, 0.3361,  
0.3161

 49.9620, 0.3361,  
0.3161


386.5173, 0.3246,  
0.3225

 35.3832, 0.3389,  
0.3145


 90.1186, 0.3319,  
0.3184

 23.9582, 0.3426,  
0.3125


116.4651, 0.3304,  
0.3193

 15.3026, 0.3474,  
0.3099


147.5031, 0.3290,  
0.3200

 9.0321, 0.3540,  
0.3063

183.6168, 0.3279,  
0.3206

 4.7621, 0.3638,  
0.3010

225.1907, 0.3269,  
0.3212

 2.1084, 0.3795,  
0.2924

272.6091, 0.3260,

 0.6693, 0.4142,

0.3217

0.2729

326.2566, 0.3252,  
0.3221

0.0000, 0.0000,  
0.0000

49.9620, 0.3361,  
0.3161

49.9620, 0.3361,  
0.3161

41.4453, 0.3540,  
0.3081

59.8923, 0.3215,  
0.3238

34.2712, 0.3758,  
0.3000

71.2896, 0.3096,  
0.3310

28.3725, 0.4019,  
0.2925

84.2130, 0.3000,  
0.3376

23.6736, 0.4325,  
0.2862

92.8332, 0.2918,  
0.3346

20.0906, 0.4670,  
0.2822

93.1841, 0.2888,  
0.3289

■ 17.5291, 0.5037,  
0.2818

■ 15.8785, 0.5398,  
0.2858

■ 14.9921, 0.5718,  
0.2943

■ 14.8112, 0.5800,  
0.2969

# Harmonies

## Analogous

The Analogous color harmony consists of three colors that are next to each other on the color wheel.



49.9620, 0.3160, 0.3023



49.9620, 0.3361, 0.3161



49.9620, 0.3500, 0.3334

# Triad

The Triadic color harmony groups three colors that are evenly spaced from another and form a triangle on the color wheel.



49.9620, 0.3361, 0.3161



49.9620, 0.3290, 0.3654



49.9620, 0.2735, 0.3060

# Complementary

The Complementary color scheme is a pair of colors which are on the opposite of each other on the color wheel.



49.9620, 0.3361, 0.3161



62.4183, 0.2937, 0.3423

# Split Complementary

Split-complementary colors differ from the complementary color scheme. The scheme consists of three colors, the original color and two neighbors of the complement color.



49.9620, 0.2768, 0.3227



49.9620, 0.3361, 0.3161



49.9620, 0.3084, 0.3580

# Square

The Square scheme is like the rectangle color scheme, but the four colors are evenly spaced on the color wheel.



49.9620, 0.3361, 0.3161



49.9620, 0.3457, 0.3622



49.9620, 0.2894, 0.3421



49.9620, 0.2803, 0.2961



# Rectangle

The Rectangle color scheme consists of four colors that form a rectangle on the color wheel.



49.9620, 0.3361, 0.3161



49.9620, 0.3536, 0.3449



49.9620, 0.2894, 0.3421



49.9620, 0.2735, 0.3110

# Sweetspot

The Sweet Spot groups the original color and five complimentary colors.



49.9642, 0.3361, 0.3161



91.5688, 0.3187, 0.3254



49.5744, 0.3055, 0.2854



19.3555, 0.3196, 0.3248



0.0000, 0.0000, 0.0000



21.4041, 0.3127, 0.3290



# Same Dimension

The Same Dimension uses a secret algorithm to generate beautiful new colors.



49.9642, 0.3361, 0.3161



68.2701, 0.3428, 0.3129



52.5283, 0.3441, 0.3379



12.4808, 0.3245, 0.3221



8.8770, 0.5761, 0.2947



0.5499, 0.5262, 0.2673



# Inverse Universe

The Inverse Universe completely reimagines the original color for something new.



49.9642, 0.3361, 0.3161



68.2701, 0.3428, 0.3129



59.2829, 0.2865, 0.3200



12.4808, 0.3245, 0.3221



8.8770, 0.5761, 0.2947

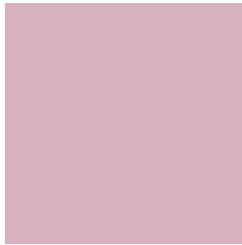


0.5499, 0.5262, 0.2673



# Previews

## White Background



This preview shows how the Yxy color 49.9620, 0.3361, 0.3161 looks on a white background.

## Color Contrast Check

Large Text (above 18pt) WCAG AA × Fail

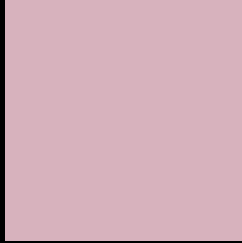
Any Text WCAG AA × Fail

Large Text (above 18pt) WCAG AAA × Fail

Any Text WCAG AAA × Fail



# Black Background



This preview shows how the Yxy color 49.9620, 0.3361, 0.3161 looks on a black background.

## Color Contrast Check

Large Text (above 18pt) WCAG AA ✓ Pass

Any Text WCAG AA ✓ Pass

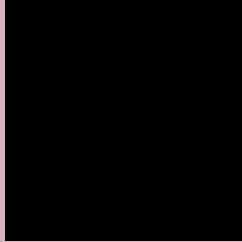
Large Text (above 18pt) WCAG AAA ✓ Pass

Any Text WCAG AAA ✓ Pass

If you want to check with other color combinations, try the [Color Contrast Checker](#).

**Yxy 49.9620, 0.3361, 0.3161**

## Background



This preview shows how black text looks on a background with the Yxy color 49.9620, 0.3361, 0.3161.



This preview shows how white text looks on a background with the Yxy color 49.9620, 0.3361, 0.3161.

# Color Blindness Simulation

Color vision deficiency is a very complex topic, and I could not describe the different causes any better than Wikipedia does, so if you want to learn more, you should check out their [article about color blindness](#).

## Dichromacy



### Original Color

49.9620, 0.3361, 0.3161

### Protanopia

50.2545, 0.3090, 0.3202

### Deuteranopia

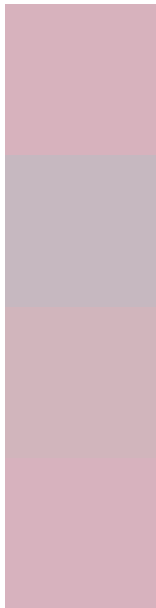
50.0659, 0.3276, 0.3218



## Tritanopia

50.0495, 0.3344, 0.3137

# Trichromacy



## Original Color

49.9620, 0.3361, 0.3161

## Protanomaly

50.0925, 0.3182, 0.3192

## Deuteranomaly

50.2339, 0.3312, 0.3206

## Tritanomaly

50.0056, 0.3352, 0.3149

# Monochromacy



## Original Color

49.9620, 0.3361, 0.3161

## Achromatopsia

51.4918, 0.3127, 0.3290

## Achromatomaly

50.9776, 0.3205, 0.3241

# CSS Examples

## Text

The CSS property to change the color of the text to Yxy 49.9620, 0.3361, 0.3161 is called "color". The color property can be set on classes, ids or directly on the HTML element.

This example shows how text in the color `rgb(215, 178, 189)` looks like.

```
.text, #text, p{  
    color:rgb(215, 178, 189)  
}
```

If you want to add a text shadow in that color use the text-shadow property, you can generate a text shadow directly with our [CSS Text Shadow Generator](#).

Here you see how black text with a 4 pixel rgb(215, 178, 189) colored shadow looks like.

```
.shadow{ text-shadow: 4px 4px 2px rgb(215, 178, 189) }
```

## Border

The CSS property to change the border of an element to Yxy 49.9620, 0.3361, 0.3161 is called "border". The border property can be set on classes, ids or directly on the HTML element.

This example shows the color as border, it can be applied via the CSS property "border" or "border-color".

```
.border, #border, table{ border:4px solid rgb(215, 178, 189) }
```

If only the border color should be changed use the property `border-color`.

```
.border{ border-color:rgb(215, 178, 189) }
```

If you want to add a box shadow in that color use:

Here you see how a box with a 4 pixel `rgb(215, 178, 189)` colored shadow looks like.

```
.boxshadow{ -moz-box-shadow:4px 4px 4px  
4px rgb(215, 178, 189); -webkit-box-  
shadow:4px 4px 4px 4px rgb(215, 178, 189);  
box-shadow:4px 4px 4px 4px rgb(215, 178,  
189) }
```



# Background

The CSS property to change the background color of an element to Yxy 49.9620, 0.3361, 0.3161 is called "background". The background property can be set on classes, ids or directly on the HTML element.

```
.background, #background, body{  
background: rgb(215, 178, 189) }
```

If only the background color should be changed can be used:

```
.background{ background-color: rgb(215,  
178, 189) }
```

This example shows the color as background, it is applied via the CSS property "background".

To optimize and compress your CSS code, you can use our [online CSS compressor and optimizer](#) based on csstidy. If you want to create a linear or radial gradient as background or border, check our [CSS Gradient Generator](#).

Hey! You found this booklet interesting? Support Converting Colors with the new Membership Option!

The pro membership hides all ads, plus gives you double the colors in the color bucket, and more awesome pro features!

**[Learn more, Memberships starting at \\$2.50/m!](#)**

**Follow me  
on Twitter!**

@ConvertingColor