

Converting Colors

$Yxy(49.9760, 0.3369, 0.3327)$

Have a look what the booklet for
Yxy(49.9760, 0.3369, 0.3327)
contains.

Yxy(49.9760, 0.3369, 0.3327)	3
Conversions	4
Details	6
Harmonies	12
Previews	24
Color Blindness Simulation	27
CSS Examples	30

Color

Yxy(49.9760, 0.3369, 0.3327)

Conversions

Conversions Part 1

Format	Color
Hex	CFB6B3
RGB	207, 182, 179
RGB Percent	81%, 71%, 70%
CMY	0.1881, 0.2863, 0.2980
CMYK	0.00, 0.12, 0.14, 0.19
HSL	6°, 23%, 76%
HSV	6°, 14%, 81%
XYZ	50.6069, 49.9760, 49.6305
YIQ	189.1330, 15.8630, 4.3670

Conversions

Conversions Part 2

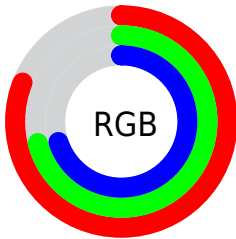
Format	Color
R _{YB}	207, 182, 179
Decimal	13612723
CIE Lab	76.05, 8.47, 4.80
CIE LCh	76, 9.731, 29.526
Yxy	49.9760, 0.3369, 0.3327
Android (android.graphics.Color)	4291802803 (0xFFCFB6B3)
YUV	189.1330, -4.9956, 15.6694
Hunter-Lab	70.6937, 4.0673, 7.8611

Details

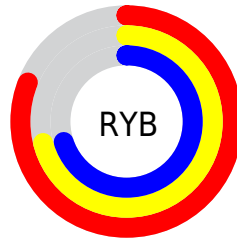
The Yxy color $49.9760, 0.3369, 0.3327$ is a light color, and the websafe version is hex `CCCCCC`. A complement of this color would be $57.3095, 0.2921, 0.3253$, and the grayscale version is $50.9953, 0.3127, 0.3290$.

A 20% lighter version of the original color is $88.4072, 0.3260, 0.3320$, and $23.8823, 0.3436, 0.3340$ is the 20% darker color. If you saturate the color by 10%, you get $42.1179, 0.3596, 0.3357$, and if you desaturate by 10%, it is $58.9659, 0.3184, 0.3299$.

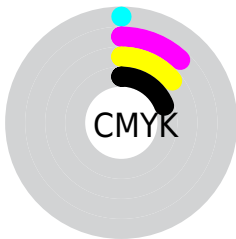
Distribution



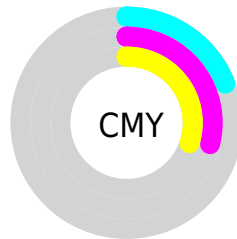
- Red (81%)
- Green (71%)
- Blue (70%)



- Red (81%)
- Yellow (71%)
- Blue (70%)



- Cyan (0%)
- Magenta (12%)
- Yellow (14%)
- Black (19%)





- Cyan (19%)
- Magenta (29%)
- Yellow (30%)

Brightness & Saturation Gradients

These gradients show how the Yxy color 49.9760, 0.3369, 0.3327 changes by changing the brightness by 10 percent. The first figure shows a shift by +10% for each color and the second figure -10%.


Similar to the brightness gradients but the following saturation gradients show a change of the Yxy color 49.9760, 0.3369, 0.3327 by changing the saturation by 10% instead.

 49.9760, 0.3369,
0.3327

 49.9760, 0.3369,
0.3327

386.5721, 0.3249,
0.3310

 35.3943, 0.3399,
0.3331


 90.1393, 0.3326,
0.3321

 23.9668, 0.3437,
0.3336


116.4898, 0.3309,
0.3319

 15.3090, 0.3487,
0.3342


147.5319, 0.3295,
0.3317

 9.0365, 0.3558,
0.3349

183.6501, 0.3283,
0.3315

 4.7650, 0.3662,
0.3359

225.2289, 0.3273,
0.3314

 2.1101, 0.3831,
0.3372

272.6525, 0.3264,

 0.6703, 0.4421,

0.3312

0.3512

326.3055, 0.3256,
0.3311

0.0000, 0.0000,
0.0000

49.9760, 0.3369,
0.3327

49.9760, 0.3369,
0.3327

42.1179, 0.3596,
0.3357

58.9659, 0.3184,
0.3299

35.3402, 0.3874,
0.3387

69.1228, 0.3034,
0.3274

29.5977, 0.4209,
0.3415

80.4890, 0.2911,
0.3251

24.8393, 0.4601,
0.3439

92.0122, 0.2844,
0.3289

21.0096, 0.5037,
0.3453

■ 18.0477, 0.5485,
0.3452

■ 15.8853, 0.5891,
0.3430

■ 14.4437, 0.6191,
0.3389

■ 13.8462, 0.6322,
0.3362

Harmonies

Analogous

The Analogous color harmony consists of three colors that are next to each other on the color wheel.



49.9760, 0.3284, 0.3213



49.9760, 0.3369, 0.3327



49.9760, 0.3388, 0.3435

Triad

The Triadic color harmony groups three colors that are evenly spaced from another and form a triangle on the color wheel.



49.9760, 0.3369, 0.3327



49.9760, 0.3093, 0.3470



49.9760, 0.2921, 0.3075

Complementary

The Complementary color scheme is a pair of colors which are on the opposite of each other on the color wheel.



49.9760, 0.3369, 0.3327



57.3095, 0.2921, 0.3253

Split Complementary

Split-complementary colors differ from the complementary color scheme. The scheme consists of three colors, the original color and two neighbors of the complement color.



49.9760, 0.2873, 0.3139



49.9760, 0.3369, 0.3327



49.9760, 0.2971, 0.3368

Square

The Square scheme is like the rectangle color scheme, but the four colors are evenly spaced on the color wheel.



49.9760, 0.3369, 0.3327



49.9760, 0.3227, 0.3521



49.9760, 0.2891, 0.3245



49.9760, 0.3024, 0.3069

Rectangle

The Rectangle color scheme consists of four colors that form a rectangle on the color wheel.



49.9760, 0.3369, 0.3327



49.9760, 0.3360, 0.3488



49.9760, 0.2891, 0.3245



49.9760, 0.2898, 0.3091

Sweetspot

The Sweet Spot groups the original color and five complimentary colors.



49.9782, 0.3369, 0.3327



93.6814, 0.3193, 0.3301



49.8869, 0.3165, 0.2991



19.8047, 0.3205, 0.3303



0.0000, 0.0000, 0.0000



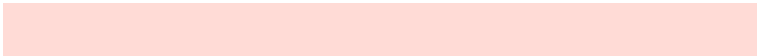
21.4041, 0.3127, 0.3290

Same Dimension

The Same Dimension uses a secret algorithm to generate beautiful new colors.



49.9782, 0.3369, 0.3327



76.5467, 0.3425, 0.3335



55.9310, 0.3346, 0.3493



12.0076, 0.3288, 0.3315



8.7868, 0.6307, 0.3374



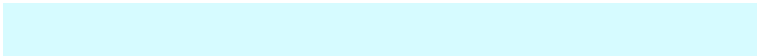
0.5614, 0.6062, 0.3569

Inverse Universe

The Inverse Universe completely reimagines the original color for something new.



57.3095, 0.2921, 0.3253



90.3306, 0.2882, 0.3245



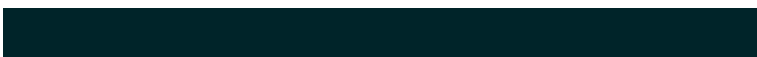
51.0158, 0.2916, 0.3079



13.1834, 0.2983, 0.3265



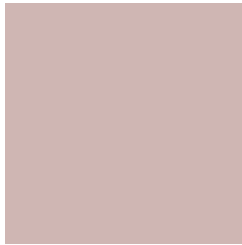
24.7829, 0.2154, 0.2955



1.4487, 0.2173, 0.3021

Previews

White Background



This preview shows how the Yxy color 49.9760, 0.3369, 0.3327 looks on a white background.

Color Contrast Check

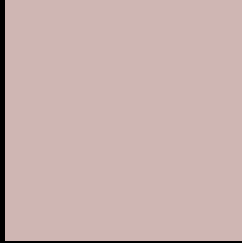
Large Text (above 18pt) WCAG AA × Fail

Any Text WCAG AA × Fail

Large Text (above 18pt) WCAG AAA × Fail

Any Text WCAG AAA × Fail

Black Background



This preview shows how the Yxy color 49.9760, 0.3369, 0.3327 looks on a black background.

Color Contrast Check

Large Text (above 18pt) WCAG AA ✓ Pass

Any Text WCAG AA ✓ Pass

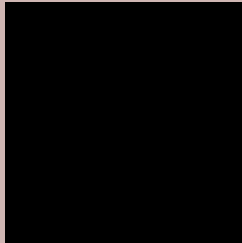
Large Text (above 18pt) WCAG AAA ✓ Pass

Any Text WCAG AAA ✓ Pass

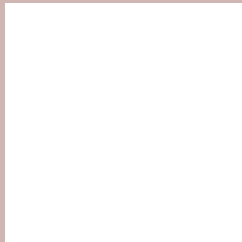
If you want to check with other color combinations, try the [Color Contrast Checker](#).

Yxy 49.9760, 0.3369, 0.3327

Background



This preview shows how black text looks on a background with the Yxy color 49.9760, 0.3369, 0.3327.



This preview shows how white text looks on a background with the Yxy color 49.9760, 0.3369, 0.3327.

Color Blindness Simulation

Color vision deficiency is a very complex topic, and I could not describe the different causes any better than Wikipedia does, so if you want to learn more, you should check out their [article about color blindness](#).

Dichromacy



Original Color

49.9760, 0.3369, 0.3327

Protanopia

50.1245, 0.3208, 0.3353

Deuteranopia

49.8577, 0.3388, 0.3315



Tritanopia

50.0929, 0.3264, 0.3123

Trichromacy



Original Color

49.9760, 0.3369, 0.3327

Protanomaly

49.9044, 0.3261, 0.3340

Deuteranomaly

49.7123, 0.3379, 0.3315

Tritanomaly

50.1318, 0.3295, 0.3194

Monochromacy



Original Color

49.9760, 0.3369, 0.3327

Achromatopsia

50.8881, 0.3127, 0.3290

Achromatomaly

50.3564, 0.3219, 0.3303

CSS Examples

Text

The CSS property to change the color of the text to Yxy 49.9760, 0.3369, 0.3327 is called "color". The color property can be set on classes, ids or directly on the HTML element.

This example shows how text in the color `rgb(207, 182, 179)` looks like.

```
.text, #text, p{  
    color:rgb(207, 182, 179)  
}
```

If you want to add a text shadow in that color use the text-shadow property, you can generate a text shadow directly with our [CSS Text Shadow Generator](#).

Here you see how black text with a 4 pixel rgb(207, 182, 179) colored shadow looks like.

```
.shadow{ text-shadow: 4px 4px 2px rgb(207, 182, 179) }
```

Border

The CSS property to change the border of an element to Yxy 49.9760, 0.3369, 0.3327 is called "border". The border property can be set on classes, ids or directly on the HTML element.

This example shows the color as border, it can be applied via the CSS property "border" or "border-color".

```
.border, #border, table{ border:4px solid rgb(207, 182, 179) }
```

If only the border color should be changed use the property `border-color`.

```
.border{ border-color:rgb(207, 182, 179) }
```

If you want to add a box shadow in that color use:

Here you see how a box with a 4 pixel `rgb(207, 182, 179)` colored shadow looks like.

```
.boxshadow{ -moz-box-shadow:4px 4px 4px  
4px rgb(207, 182, 179); -webkit-box-  
shadow:4px 4px 4px 4px rgb(207, 182, 179);  
box-shadow:4px 4px 4px 4px rgb(207, 182,  
179) }
```


Background

The CSS property to change the background color of an element to Yxy 49.9760, 0.3369, 0.3327 is called "background". The background property can be set on classes, ids or directly on the HTML element.

```
.background, #background, body{  
background: rgb(207, 182, 179) }
```

If only the background color should be changed can be used:

```
.background{ background-color: rgb(207,  
182, 179) }
```

This example shows the color as background, it is applied via the CSS property "background".

To optimize and compress your CSS code, you can use our [online CSS compressor and optimizer](#) based on csstidy. If you want to create a linear or radial gradient as background or border, check our [CSS Gradient Generator](#).

Hey! You found this booklet interesting? Support Converting Colors with the new Membership Option!

The pro membership hides all ads, plus gives you double the colors in the color bucket, and more awesome pro features!

[Learn more, Memberships starting at \\$2.50/m!](#)

**Follow me
on Twitter!**

@ConvertingColor