

# Converting Colors

$Yxy(49.9981, 0.3371, 0.3292)$

Have a look what the booklet for  
Yxy(49.9981, 0.3371, 0.3292)  
contains.

<b>Yxy(49.9393, 0.3371, 0.3291)</b> .....	3
<b><i>Conversions</i></b> .....	4
<b><i>Details</i></b> .....	6
<b><i>Harmonies</i></b> .....	12
<b><i>Previews</i></b> .....	24
<b><i>Color Blindness Simulation</i></b> .....	27
<b><i>CSS Examples</i></b> .....	30

# Color

**Yxy(49.9393, 0.3371, 0.3291)**

# Conversions

## Conversions Part 1

Format	Color
Hex	D1B5B5
RGB	209, 181, 181
RGB Percent	82%, 71%, 71%
CMY	0.1805, 0.2901, 0.2902
CMYK	0.00, 0.13, 0.13, 0.18
HSL	0°, 23%, 76%
HSV	0°, 13%, 82%
XYZ	51.1533, 49.9393, 50.6525
YIQ	189.3720, 16.6880, 5.9360

# Conversions

## Conversions Part 2

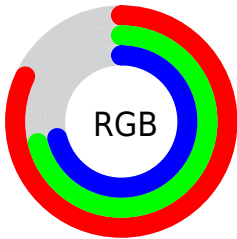
Format	Color
R <sub>Y</sub> B	209, 181, 181
Decimal	13743541
CIE Lab	76.03, 10.02, 3.71
CIE LCh	76, 10.681, 20.309
Yxy	49.9393, 0.3371, 0.3291
Android (android.graphics.Color)	4291933621 (0xFFD1B5B5)
YUV	189.3720, -4.1274, 17.2138
Hunter-Lab	70.6677, 5.5397, 6.9701

# Details

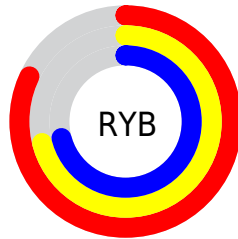
The Yxy color `49.9393, 0.3371, 0.3291` is a light color, and the websafe version is hex `CCCCCC`. A complement of this color would be `60.0029, 0.2924, 0.3289`, and the grayscale version is `51.1296, 0.3127, 0.3290`.

A 20% lighter version of the original color is `87.9428, 0.3248, 0.3290`, and `23.8669, 0.3439, 0.3291` is the 20% darker color. If you saturate the color by 10%, you get `41.2821, 0.3607, 0.3292`, and if you desaturate by 10%, it is `60.0021, 0.3182, 0.3290`.

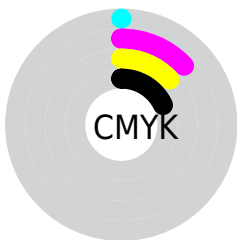
# Distribution



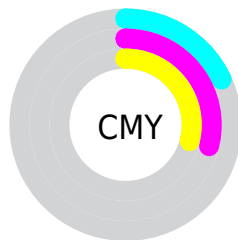
- Red (82%)
- Green (71%)
- Blue (71%)



- Red (82%)
- Yellow (71%)
- Blue (71%)



- Cyan (0%)
- Magenta (13%)
- Yellow (13%)
- Black (18%)




- Cyan (18%)
- Magenta (29%)
- Yellow (29%)


# Brightness & Saturation Gradients

These gradients show how the Yxy color 49.9393, 0.3371, 0.3291 changes by changing the brightness by 10 percent. The first figure shows a shift by +10% for each color and the second figure -10%.


Similar to the brightness gradients but the following saturation gradients show a change of the Yxy color 49.9393, 0.3371, 0.3291 by changing the saturation by 10% instead.




 49.9393, 0.3371,  
0.3291

 49.9393, 0.3371,  
0.3291

386.4285, 0.3250,  
0.3292

 35.3652, 0.3401,  
0.3291


 90.0849, 0.3327,  
0.3291

 23.9443, 0.3439,  
0.3290

116.4252, 0.3311,  
0.3292

 15.2923, 0.3490,  
0.3289


147.4564, 0.3297,  
0.3292

 9.0248, 0.3561,  
0.3286

183.5627, 0.3285,  
0.3292

 4.7574, 0.3666,  
0.3282

225.1288, 0.3274,  
0.3292

 2.1056, 0.3837,  
0.3272

272.5388, 0.3265,

 0.6678, 0.4365,

0.3292

0.3313

326.1772, 0.3257,  
0.3292

0.0000, 0.0000,  
0.0000

49.9393, 0.3371,  
0.3291

49.9393, 0.3371,  
0.3291

41.2821, 0.3607,  
0.3292

60.0021, 0.3182,  
0.3290

33.9616, 0.3901,  
0.3293

71.5219, 0.3031,  
0.3290

27.9133, 0.4261,  
0.3294

84.5560, 0.2910,  
0.3289

23.0646, 0.4685,  
0.3296

92.2922, 0.2855,  
0.3289

19.3358, 0.5156,  
0.3297

■ 16.6372, 0.5630,  
0.3299

■ 14.8658, 0.6034,  
0.3300

■ 13.8971, 0.6298,  
0.3300

■ 13.5564, 0.6400,  
0.3300

# Harmonies

## Analogous

The Analogous color harmony consists of three colors that are next to each other on the color wheel.



49.9393, 0.3259, 0.3170



49.9393, 0.3371, 0.3291



49.9393, 0.3416, 0.3415

# Triad

The Triadic color harmony groups three colors that are evenly spaced from another and form a triangle on the color wheel.



49.9393, 0.3371, 0.3291



49.9393, 0.3135, 0.3513



49.9393, 0.2878, 0.3069

# Complementary

The Complementary color scheme is a pair of colors which are on the opposite of each other on the color wheel.



49.9393, 0.3371, 0.3291



60.0029, 0.2924, 0.3289

# Split Complementary

Split-complementary colors differ from the complementary color scheme. The scheme consists of three colors, the original color and two neighbors of the complement color.



49.9393, 0.2847, 0.3155



49.9393, 0.3371, 0.3291



49.9393, 0.2993, 0.3414

# Square

The Square scheme is like the rectangle color scheme, but the four colors are evenly spaced on the color wheel.



49.9393, 0.3371, 0.3291



49.9393, 0.3278, 0.3547



49.9393, 0.2889, 0.3282



49.9393, 0.2975, 0.3043



# Rectangle

The Rectangle color scheme consists of four colors that form a rectangle on the color wheel.



49.9393, 0.3371, 0.3291



49.9393, 0.3401, 0.3483



49.9393, 0.2889, 0.3282



49.9393, 0.2860, 0.3092

# Sweetspot

The Sweet Spot groups the original color and five complimentary colors.



49.9415, 0.3371, 0.3291



93.0298, 0.3193, 0.3290



51.1978, 0.3143, 0.2962



19.6406, 0.3206, 0.3290



0.0000, 0.0000, 0.0000



21.4041, 0.3127, 0.3290



# Same Dimension

The Same Dimension uses a secret algorithm to generate beautiful new colors.



49.9415, 0.3371, 0.3291



74.3386, 0.3432, 0.3291



55.9109, 0.3348, 0.3458



11.8099, 0.3291, 0.3291



8.3611, 0.6400, 0.3300



0.4681, 0.6398, 0.3302



# Inverse Universe

The Inverse Universe completely reimagines the original color for something new.



60.0029, 0.2924, 0.3289



93.0425, 0.2884, 0.3289



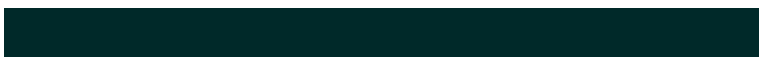
53.4478, 0.2920, 0.3116



13.4052, 0.2983, 0.3289



30.8978, 0.2246, 0.3285

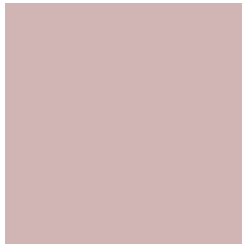


1.7282, 0.2246, 0.3285



# Previews

## White Background



This preview shows how the Yxy color 49.9393, 0.3371, 0.3291 looks on a white background.

## Color Contrast Check

Large Text (above 18pt) WCAG AA × Fail

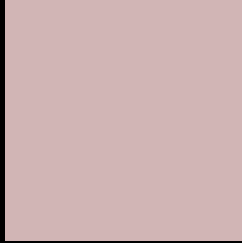
Any Text WCAG AA × Fail

Large Text (above 18pt) WCAG AAA × Fail

Any Text WCAG AAA × Fail



# Black Background



This preview shows how the Yxy color 49.9393, 0.3371, 0.3291 looks on a black background.

## Color Contrast Check

Large Text (above 18pt) WCAG AA ✓ Pass

Any Text WCAG AA ✓ Pass

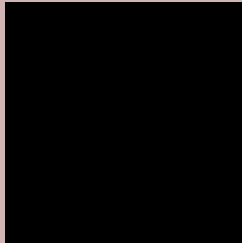
Large Text (above 18pt) WCAG AAA ✓ Pass

Any Text WCAG AAA ✓ Pass

If you want to check with other color combinations, try the [Color Contrast Checker](#).

**Yxy 49.9393, 0.3371, 0.3291**

## Background



This preview shows how black text looks on a background with the Yxy color 49.9393, 0.3371, 0.3291.



This preview shows how white text looks on a background with the Yxy color 49.9393, 0.3371, 0.3291.

# Color Blindness Simulation

Color vision deficiency is a very complex topic, and I could not describe the different causes any better than Wikipedia does, so if you want to learn more, you should check out their [article about color blindness](#).

## Dichromacy



### Original Color

49.9393, 0.3371, 0.3291

### Protanopia

50.2078, 0.3192, 0.3328

### Deuteranopia

49.7938, 0.3362, 0.3291



## Tritanopia

49.9393, 0.3291, 0.3124

# Trichromacy



## Original Color

49.9393, 0.3371, 0.3291

## Protanomaly

50.1226, 0.3253, 0.3315

## Deuteranomaly

49.7938, 0.3362, 0.3291

## Tritanomaly

50.0183, 0.3314, 0.3183

# Monochromacy



## Original Color

49.9393, 0.3371, 0.3291

## Achromatopsia

50.8881, 0.3127, 0.3290

## Achromatomaly

50.3987, 0.3211, 0.3290

# CSS Examples

## Text

The CSS property to change the color of the text to Yxy 49.9393, 0.3371, 0.3291 is called "color". The color property can be set on classes, ids or directly on the HTML element.

This example shows how text in the color `rgb(209, 181, 181)` looks like.

```
.text, #text, p{  
    color:rgb(209, 181, 181)  
}
```

If you want to add a text shadow in that color use the text-shadow property, you can generate a text shadow directly with our [CSS Text Shadow Generator](#).

Here you see how black text with a 4 pixel rgb(209, 181, 181) colored shadow looks like.

```
.shadow{ text-shadow: 4px 4px 2px rgb(209, 181, 181) }
```

## Border

The CSS property to change the border of an element to Yxy 49.9393, 0.3371, 0.3291 is called "border". The border property can be set on classes, ids or directly on the HTML element.

This example shows the color as border, it can be applied via the CSS property "border" or "border-color".

```
.border, #border, table{ border:4px solid rgb(209, 181, 181) }
```

If only the border color should be changed use the property `border-color`.

```
.border{ border-color:rgb(209, 181, 181) }
```

If you want to add a box shadow in that color use:

Here you see how a box with a 4 pixel `rgb(209, 181, 181)` colored shadow looks like.

```
.boxshadow{ -moz-box-shadow:4px 4px 4px  
4px rgb(209, 181, 181); -webkit-box-  
shadow:4px 4px 4px 4px rgb(209, 181, 181);  
box-shadow:4px 4px 4px 4px rgb(209, 181,  
181) }
```



# Background

The CSS property to change the background color of an element to Yxy 49.9393, 0.3371, 0.3291 is called "background". The background property can be set on classes, ids or directly on the HTML element.

```
.background, #background, body{  
background: rgb(209, 181, 181) }
```

If only the background color should be changed can be used:

```
.background{ background-color: rgb(209,  
181, 181) }
```

This example shows the color as background, it is applied via the CSS property "background".

To optimize and compress your CSS code, you can use our [online CSS compressor and optimizer](#) based on csstidy. If you want to create a linear or radial gradient as background or border, check our [CSS Gradient Generator](#).

Hey! You found this booklet interesting? Support Converting Colors with the new Membership Option!

The pro membership hides all ads, plus gives you double the colors in the color bucket, and more awesome pro features!

**[Learn more, Memberships starting at \\$2.50/m!](#)**

**Follow me  
on Twitter!**

@ConvertingColor