

Converting Colors

$Yxy(50.0592, 0.3444, 0.3258)$

Have a look what the booklet for
Yxy(50.0592, 0.3444, 0.3258)
contains.

Yxy(49.9287, 0.3448, 0.3255)	3
Conversions	4
Details	6
Harmonies	12
Previews	24
Color Blindness Simulation	27
CSS Examples	30

Color

Yxy(49.9287, 0.3448, 0.3255)

Conversions

Conversions Part 1

Format	Color
Hex	D9B2B5
RGB	217, 178, 181
RGB Percent	85%, 70%, 71%
CMY	0.1488, 0.3020, 0.2901
CMYK	0.00, 0.18, 0.17, 0.15
HSL	355°, 34%, 77%
HSV	355°, 18%, 85%
XYZ	52.8891, 49.9287, 50.5729
YIQ	190.0030, 22.2810, 9.2010

Conversions

Conversions Part 2

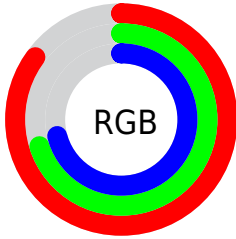
Format	Color
R _Y B	217, 178, 181
Decimal	14267061
CIE Lab	76.03, 14.59, 3.78
CIE LCh	76, 15.076, 14.510
Yxy	49.9287, 0.3448, 0.3255
Android (android.graphics.Color)	4292457141 (0xFFD9B2B5)
YUV	190.0030, -4.4385, 23.6764
Hunter-Lab	70.6602, 9.9517, 7.0271

Details

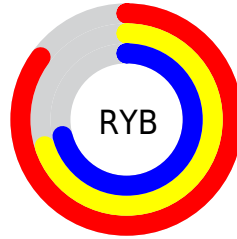
The Yxy color **49.9287, 0.3448, 0.3255** is a light color, and the websafe version is hex **CC9999**. A complement of this color would be **63.9730, 0.2876, 0.3326**, and the grayscale version is **51.5148, 0.3127, 0.3290**.

A 20% lighter version of the original color is **86.2201, 0.3251, 0.3261**, and **23.9071, 0.3546, 0.3244** is the 20% darker color. If you saturate the color by 10%, you get **41.2033, 0.3689, 0.3234**, and if you desaturate by 10%, it is **60.1433, 0.3254, 0.3275**.

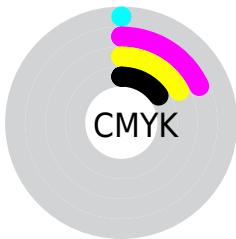
Distribution



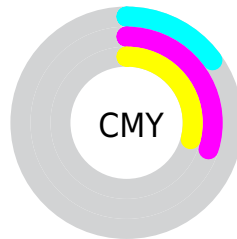
- Red (85%)
- Green (70%)
- Blue (71%)



- Red (85%)
- Yellow (70%)
- Blue (71%)



- Cyan (0%)
- Magenta (18%)
- Yellow (17%)
- Black (15%)




- Cyan (15%)
- Magenta (30%)
- Yellow (29%)

Brightness & Saturation Gradients


These gradients show how the Yxy color 49.9287, 0.3448, 0.3255 changes by changing the brightness by 10 percent. The first figure shows a shift by +10% for each color and the second figure -10%.


Similar to the brightness gradients but the following saturation gradients show a change of the Yxy color 49.9287, 0.3448, 0.3255 by changing the saturation by 10% instead.

 49.9287, 0.3448,
0.3255

 49.9287, 0.3448,
0.3255


386.3871, 0.3289,
0.3274

 35.3567, 0.3487,
0.3250


 90.0692, 0.3390,
0.3262

 23.9378, 0.3538,
0.3243


116.4066, 0.3369,
0.3265

 15.2875, 0.3605,
0.3234


147.4345, 0.3350,
0.3267

 9.0214, 0.3698,
0.3220

183.5375, 0.3334,
0.3269

 4.7551, 0.3836,
0.3198

225.0998, 0.3321,
0.3270

 2.1043, 0.4060,
0.3159

272.5059, 0.3309,

 0.6671, 0.4694,

0.3272

0.3134

326.1402, 0.3298,
0.3273

0.0000, 0.0000,
0.0000

49.9287, 0.3448,
0.3255

49.9287, 0.3448,
0.3255

41.2033, 0.3689,
0.3234

60.1433, 0.3254,
0.3275

33.8911, 0.3987,
0.3214

71.9048, 0.3099,
0.3294

27.9199, 0.4347,
0.3196

85.2764, 0.2974,
0.3311

23.2081, 0.4765,
0.3184

93.5001, 0.2900,
0.3289

19.6653, 0.5222,
0.3182

■ 17.1893, 0.5671,
0.3194

■ 15.6600, 0.6047,
0.3221

■ 14.9078, 0.6294,
0.3256

■ 14.8000, 0.6329,
0.3260

Harmonies

Analogous

The Analogous color harmony consists of three colors that are next to each other on the color wheel.



49.9287, 0.3275, 0.3093



49.9287, 0.3448, 0.3255



49.9287, 0.3533, 0.3430

Triad

The Triadic color harmony groups three colors that are evenly spaced from another and form a triangle on the color wheel.



49.9287, 0.3448, 0.3255



49.9287, 0.3177, 0.3625



49.9287, 0.2762, 0.2996

Complementary

The Complementary color scheme is a pair of colors which are on the opposite of each other on the color wheel.



49.9287, 0.3448, 0.3255



63.9730, 0.2876, 0.3326

Split Complementary

Split-complementary colors differ from the complementary color scheme. The scheme consists of three colors, the original color and two neighbors of the complement color.



49.9287, 0.2738, 0.3128



49.9287, 0.3448, 0.3255



49.9287, 0.2974, 0.3499

Square

The Square scheme is like the rectangle color scheme, but the four colors are evenly spaced on the color wheel.



49.9287, 0.3448, 0.3255



49.9287, 0.3372, 0.3651



49.9287, 0.2814, 0.3314



49.9287, 0.2880, 0.2945

Rectangle

The Rectangle color scheme consists of four colors that form a rectangle on the color wheel.



49.9287, 0.3448, 0.3255



49.9287, 0.3526, 0.3534



49.9287, 0.2814, 0.3314



49.9287, 0.2743, 0.3032

Sweetspot

The Sweet Spot groups the original color and five complimentary colors.



49.9310, 0.3448, 0.3255



91.3987, 0.3205, 0.3281



51.1125, 0.3121, 0.2842



19.3143, 0.3216, 0.3279



0.0000, 0.0000, 0.0000



21.4041, 0.3127, 0.3290

Same Dimension

The Same Dimension uses a secret algorithm to generate beautiful new colors.



49.9310, 0.3448, 0.3255



66.3847, 0.3543, 0.3246



56.6744, 0.3441, 0.3481



13.0678, 0.3279, 0.3272



8.9602, 0.6311, 0.3250



0.5863, 0.6062, 0.3113

Inverse Universe

The Inverse Universe completely reimagines the original color for something new.



49.9310, 0.3448, 0.3255



66.3847, 0.3543, 0.3246



56.1439, 0.2847, 0.3091



13.0678, 0.3279, 0.3272



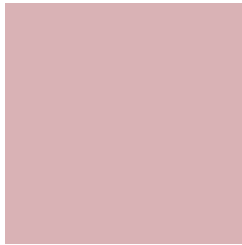
8.9602, 0.6311, 0.3250



0.5863, 0.6062, 0.3113

Previews

White Background



This preview shows how the Yxy color 49.9287, 0.3448, 0.3255 looks on a white background.

Color Contrast Check

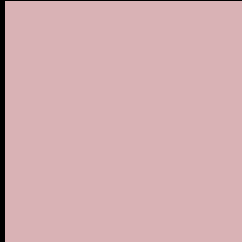
Large Text (above 18pt) WCAG AA × Fail

Any Text WCAG AA × Fail

Large Text (above 18pt) WCAG AAA × Fail

Any Text WCAG AAA × Fail

Black Background



This preview shows how the Yxy color 49.9287, 0.3448, 0.3255 looks on a black background.

Color Contrast Check

Large Text (above 18pt) WCAG AA ✓ Pass

Any Text WCAG AA ✓ Pass

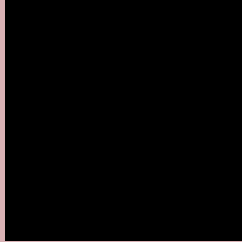
Large Text (above 18pt) WCAG AAA ✓ Pass

Any Text WCAG AAA ✓ Pass

If you want to check with other color combinations, try the [Color Contrast Checker](#).

Yxy 49.9287, 0.3448, 0.3255

Background



This preview shows how black text looks on a background with the Yxy color 49.9287, 0.3448, 0.3255.



This preview shows how white text looks on a background with the Yxy color 49.9287, 0.3448, 0.3255.

Color Blindness Simulation

Color vision deficiency is a very complex topic, and I could not describe the different causes any better than Wikipedia does, so if you want to learn more, you should check out their [article about color blindness](#).

Dichromacy



Original Color

49.9287, 0.3448, 0.3255

Protanopia

50.1622, 0.3168, 0.3303

Deuteranopia

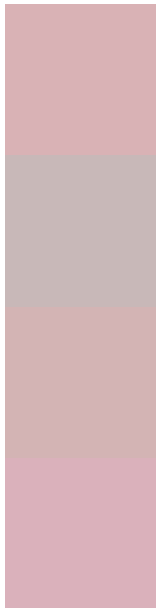
49.7529, 0.3371, 0.3303



Tritanopia

50.0674, 0.3380, 0.3138

Trichromacy



Original Color

49.9287, 0.3448, 0.3255

Protanomaly

50.0210, 0.3263, 0.3290

Deuteranomaly

49.7867, 0.3399, 0.3291

Tritanomaly

49.9376, 0.3406, 0.3173

Monochromacy



Original Color

49.9287, 0.3448, 0.3255

Achromatopsia

51.4918, 0.3127, 0.3290

Achromatomaly

50.9850, 0.3237, 0.3278

CSS Examples

Text

The CSS property to change the color of the text to Yxy 49.9287, 0.3448, 0.3255 is called "color". The color property can be set on classes, ids or directly on the HTML element.

This example shows how text in the color `rgb(217, 178, 181)` looks like.

```
.text, #text, p{  
    color:rgb(217, 178, 181)  
}
```

If you want to add a text shadow in that color use the text-shadow property, you can generate a text shadow directly with our [CSS Text Shadow Generator](#).

Here you see how black text with a 4 pixel rgb(217, 178, 181) colored shadow looks like.

```
.shadow{ text-shadow: 4px 4px 2px rgb(217, 178, 181) }
```

Border

The CSS property to change the border of an element to Yxy 49.9287, 0.3448, 0.3255 is called "border". The border property can be set on classes, ids or directly on the HTML element.

This example shows the color as border, it can be applied via the CSS property "border" or "border-color".

```
.border, #border, table{ border:4px solid rgb(217, 178, 181) }
```

If only the border color should be changed use the property `border-color`.

```
.border{ border-color:rgb(217, 178, 181) }
```

If you want to add a box shadow in that color use:

Here you see how a box with a 4 pixel `rgb(217, 178, 181)` colored shadow looks like.

```
.boxshadow{ -moz-box-shadow:4px 4px 4px  
4px rgb(217, 178, 181); -webkit-box-  
shadow:4px 4px 4px 4px rgb(217, 178, 181);  
box-shadow:4px 4px 4px 4px rgb(217, 178,  
181) }
```


Background

The CSS property to change the background color of an element to Yxy 49.9287, 0.3448, 0.3255 is called "background". The background property can be set on classes, ids or directly on the HTML element.

```
.background, #background, body{  
background: rgb(217, 178, 181) }
```

If only the background color should be changed can be used:

```
.background{ background-color: rgb(217,  
178, 181) }
```

This example shows the color as background, it is applied via the CSS property "background".

To optimize and compress your CSS code, you can use our [online CSS compressor and optimizer](#) based on csstidy. If you want to create a linear or radial gradient as background or border, check our [CSS Gradient Generator](#).

Hey! You found this booklet interesting? Support Converting Colors with the new Membership Option!

The pro membership hides all ads, plus gives you double the colors in the color bucket, and more awesome pro features!

[Learn more, Memberships starting at \\$2.50/m!](#)

**Follow me
on Twitter!**

@ConvertingColor