

Converting Colors

$Yxy(50.0828, 0.3293, 0.3344)$

Have a look what the booklet for
Yxy(50.0828, 0.3293, 0.3344)
contains.

Yxy(50.2726, 0.3295, 0.3352)	3
Conversions	4
Details	6
Harmonies	12
Previews	24
Color Blindness Simulation	27
CSS Examples	30

Color

Yxy(50.2726, 0.3295, 0.3352)

Conversions

Conversions Part 1

Format	Color
Hex	C8B9B4
RGB	200, 185, 180
RGB Percent	78%, 73%, 71%
CMY	0.2155, 0.2746, 0.2940
CMYK	0.00, 0.08, 0.10, 0.22
HSL	15°, 15%, 75%
HSV	15°, 10%, 78%
XYZ	49.4177, 50.2726, 50.2876
YIQ	188.9150, 10.5450, 1.6250

Conversions

Conversions Part 2

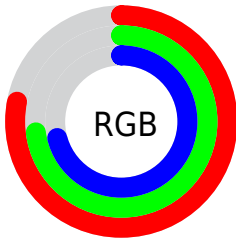
Format	Color
R _Y B	200, 187, 180
Decimal	13154740
CIE Lab	76.24, 4.48, 4.43
CIE LCh	76, 6.305, 44.668
Yxy	50.2726, 0.3295, 0.3352
Android (android.graphics.Color)	4291344820 (0xFFC8B9B4)
YUV	188.9150, -4.3951, 9.7215
Hunter-Lab	70.9032, 0.3295, 7.5812

Details

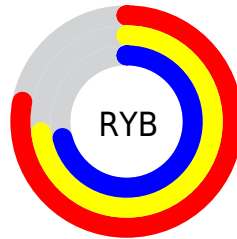
The Yxy color $50.2726, 0.3295, 0.3352$ is a light color, and the websafe version is hex `CCCCCC`. A complement of this color would be $52.9443, 0.2974, 0.3227$, and the grayscale version is $50.8637, 0.3127, 0.3290$.

A 20% lighter version of the original color is $90.2267, 0.3251, 0.3339$, and $24.1458, 0.3345, 0.3374$ is the 20% darker color. If you saturate the color by 10%, you get $43.5536, 0.3496, 0.3418$, and if you desaturate by 10%, it is $57.7796, 0.3127, 0.3290$.

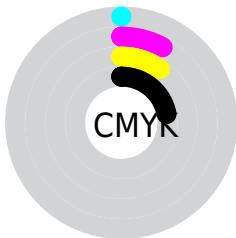
Distribution



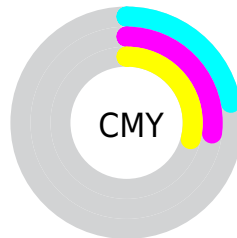
- Red (78%)
- Green (73%)
- Blue (71%)



- Red (78%)
- Yellow (73%)
- Blue (71%)



- Cyan (0%)
- Magenta (8%)
- Yellow (10%)
- Black (22%)




- Cyan (22%)
- Magenta (27%)
- Yellow (29%)

Brightness & Saturation Gradients


These gradients show how the Yxy color 50.2726, 0.3295, 0.3352 changes by changing the brightness by 10 percent. The first figure shows a shift by +10% for each color and the second figure -10%.


Similar to the brightness gradients but the following saturation gradients show a change of the Yxy color 50.2726, 0.3295, 0.3352 by changing the saturation by 10% instead.

 50.2726, 0.3295,
0.3352

 50.2726, 0.3295,
0.3352


387.7310, 0.3212,
0.3322

 35.6300, 0.3316,
0.3359


 90.5786, 0.3265,
0.3341

 24.1486, 0.3342,
0.3368


117.0109, 0.3254,
0.3337

 15.4439, 0.3377,
0.3380


148.1419, 0.3244,
0.3334

 9.1315, 0.3425,
0.3396

184.3560, 0.3236,
0.3331

 4.8271, 0.3496,
0.3420

226.0375, 0.3229,
0.3328

 2.1462, 0.3613,
0.3455

273.5709, 0.3222,

 0.6904, 0.4034,

0.3326

0.3638

327.3406, 0.3217,
0.3324

0.0000, 0.0000,
0.0000

50.2726, 0.3295,
0.3352

50.2726, 0.3295,
0.3352

43.5536, 0.3496,
0.3418

57.7796, 0.3127,
0.3290

37.5902, 0.3736,
0.3487

66.0924, 0.2987,
0.3233

32.3578, 0.4019,
0.3555

75.2366, 0.2870,
0.3181

27.8275, 0.4347,
0.3617

84.9057, 0.2798,
0.3185

23.9689, 0.4715,
0.3665

91.0263, 0.2805,
0.3289

■ 20.7489, 0.5107,
0.3690

■ 18.1316, 0.5492,
0.3680

■ 16.0771, 0.5829,
0.3628

■ 14.5358, 0.6090,
0.3547

Harmonies

Analogous

The Analogous color harmony consists of three colors that are next to each other on the color wheel.



50.2726, 0.3261, 0.3277



50.2726, 0.3295, 0.3352



50.2726, 0.3284, 0.3412

Triad

The Triadic color harmony groups three colors that are evenly spaced from another and form a triangle on the color wheel.



50.2726, 0.3295, 0.3352



50.2726, 0.3063, 0.3376



50.2726, 0.3024, 0.3144

Complementary

The Complementary color scheme is a pair of colors which are on the opposite of each other on the color wheel.



50.2726, 0.3295, 0.3352



52.9443, 0.2974, 0.3227

Split Complementary

Split-complementary colors differ from the complementary color scheme. The scheme consists of three colors, the original color and two neighbors of the complement color.



50.2726, 0.2973, 0.3167



50.2726, 0.3295, 0.3352



50.2726, 0.2995, 0.3301

Square

The Square scheme is like the rectangle color scheme, but the four colors are evenly spaced on the color wheel.



50.2726, 0.3295, 0.3352



50.2726, 0.3149, 0.3427



50.2726, 0.2962, 0.3225



50.2726, 0.3103, 0.3158

Rectangle

The Rectangle color scheme consists of four colors that form a rectangle on the color wheel.



50.2726, 0.3295, 0.3352



50.2726, 0.3252, 0.3435



50.2726, 0.2962, 0.3225



50.2726, 0.3003, 0.3147

Sweetspot

The Sweet Spot groups the original color and five complimentary colors.



50.2748, 0.3295, 0.3352



95.9017, 0.3175, 0.3308



48.8930, 0.3176, 0.3102



20.2971, 0.3188, 0.3313



0.0000, 0.0000, 0.0000



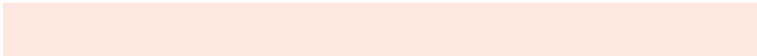
21.4041, 0.3127, 0.3290

Same Dimension

The Same Dimension uses a secret algorithm to generate beautiful new colors.



50.2748, 0.3295, 0.3352



84.3718, 0.3335, 0.3366



54.4819, 0.3282, 0.3470



11.0573, 0.3283, 0.3348



9.3582, 0.6066, 0.3566



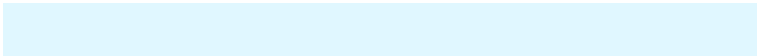
0.5619, 0.5644, 0.3900

Inverse Universe

The Inverse Universe completely reimagines the original color for something new.



52.9443, 0.2974, 0.3227



89.9032, 0.2941, 0.3213



48.7264, 0.2973, 0.3103



11.6046, 0.2984, 0.3231



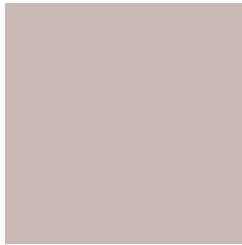
16.7466, 0.2021, 0.2474



0.9023, 0.2073, 0.2664

Previews

White Background



This preview shows how the Yxy color 50.2726, 0.3295, 0.3352 looks on a white background.

Color Contrast Check

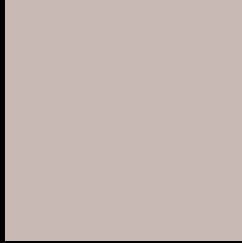
Large Text (above 18pt) WCAG AA × Fail

Any Text WCAG AA × Fail

Large Text (above 18pt) WCAG AAA × Fail

Any Text WCAG AAA × Fail

Black Background



This preview shows how the Yxy color 50.2726, 0.3295, 0.3352 looks on a black background.

Color Contrast Check

Large Text (above 18pt) WCAG AA ✓ Pass

Any Text WCAG AA ✓ Pass

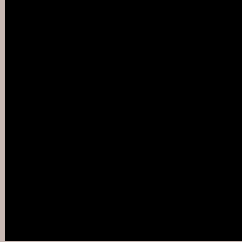
Large Text (above 18pt) WCAG AAA ✓ Pass

Any Text WCAG AAA ✓ Pass

If you want to check with other color combinations, try the [Color Contrast Checker](#).

Yxy 50.2726, 0.3295, 0.3352

Background



This preview shows how black text looks on a background with the Yxy color 50.2726, 0.3295, 0.3352.



This preview shows how white text looks on a background with the Yxy color 50.2726, 0.3295, 0.3352.

Color Blindness Simulation

Color vision deficiency is a very complex topic, and I could not describe the different causes any better than Wikipedia does, so if you want to learn more, you should check out their [article about color blindness](#).

Dichromacy



Original Color

50.2726, 0.3295, 0.3352

Protanopia

50.2143, 0.3224, 0.3366

Deuteranopia

50.3474, 0.3369, 0.3303



Tritanopia

50.0437, 0.3178, 0.3108

Trichromacy



Original Color

50.2726, 0.3295, 0.3352

Protanomaly

50.1898, 0.3251, 0.3353

Deuteranomaly

50.3250, 0.3342, 0.3315

Tritanomaly

50.0461, 0.3217, 0.3192

Monochromacy



Original Color

50.2726, 0.3295, 0.3352

Achromatopsia

50.8881, 0.3127, 0.3290

Achromatomaly

50.8491, 0.3184, 0.3315

CSS Examples

Text

The CSS property to change the color of the text to Yxy 50.2726, 0.3295, 0.3352 is called "color". The color property can be set on classes, ids or directly on the HTML element.

This example shows how text in the color `rgb(200, 185, 180)` looks like.

```
.text, #text, p{  
    color:rgb(200, 185, 180)  
}
```

If you want to add a text shadow in that color use the text-shadow property, you can generate a text shadow directly with our [CSS Text Shadow Generator](#).

Here you see how black text with a 4 pixel rgb(200, 185, 180) colored shadow looks like.

```
.shadow{ text-shadow: 4px 4px 2px rgb(200, 185, 180) }
```

Border

The CSS property to change the border of an element to Yxy 50.2726, 0.3295, 0.3352 is called "border". The border property can be set on classes, ids or directly on the HTML element.

This example shows the color as border, it can be applied via the CSS property "border" or "border-color".

```
.border, #border, table{ border:4px solid rgb(200, 185, 180) }
```

If only the border color should be changed use the property `border-color`.

```
.border{ border-color:rgb(200, 185, 180) }
```

If you want to add a box shadow in that color use:

Here you see how a box with a 4 pixel `rgb(200, 185, 180)` colored shadow looks like.

```
.boxshadow{ -moz-box-shadow:4px 4px 4px  
4px rgb(200, 185, 180); -webkit-box-  
shadow:4px 4px 4px 4px rgb(200, 185, 180);  
box-shadow:4px 4px 4px 4px rgb(200, 185,  
180) }
```


Background

The CSS property to change the background color of an element to Yxy 50.2726, 0.3295, 0.3352 is called "background". The background property can be set on classes, ids or directly on the HTML element.

```
.background, #background, body{  
background: rgb(200, 185, 180) }
```

If only the background color should be changed can be used:

```
.background{ background-color: rgb(200,  
185, 180) }
```

This example shows the color as background, it is applied via the CSS property "background".

To optimize and compress your CSS code, you can use our [online CSS compressor and optimizer](#) based on csstidy. If you want to create a linear or radial gradient as background or border, check our [CSS Gradient Generator](#).

Hey! You found this booklet interesting? Support Converting Colors with the new Membership Option!

The pro membership hides all ads, plus gives you double the colors in the color bucket, and more awesome pro features!

[Learn more, Memberships starting at \\$2.50/m!](#)

**Follow me
on Twitter!**

@ConvertingColor